

**Confidential Appendix A to CC10.9 – Location Map, Photographs, and Proposal -
made public on November 4, 2019**



This location map is for information purposes only and is oriented with North at the top. The exact boundaries of the development are not shown. The arrow marks the south edge of the development site fronting on to Wellesley Street West.

Confidential Appendix A – Location Map, Photographs, and Proposal



Photograph of 10-16 Wellesley Street West at the north-east corner with St. Nicholas Street showing the principal (south) and side (west) elevations and the properties at 5-7 St. Nicholas Street to the left in the distance (Heritage Preservation Services [HPS], 2019)



Photograph of 10-16 Wellesley Street West showing the principal (south) and side (east) elevations (HPS, 2019)

Confidential Appendix A – Location Map, Photographs, and Proposal



Photograph of the principal (west) elevations of 7 St. Nicholas Street and to the right, 5 St. Nicholas Street (HPS, 2019)



Photograph of the principal (west) and side (south) elevations of 5 St. Nicholas Street with 7 St. Nicholas Street to the left (HPS, 2019)

Confidential Appendix A – Location Map, Photographs, and Proposal



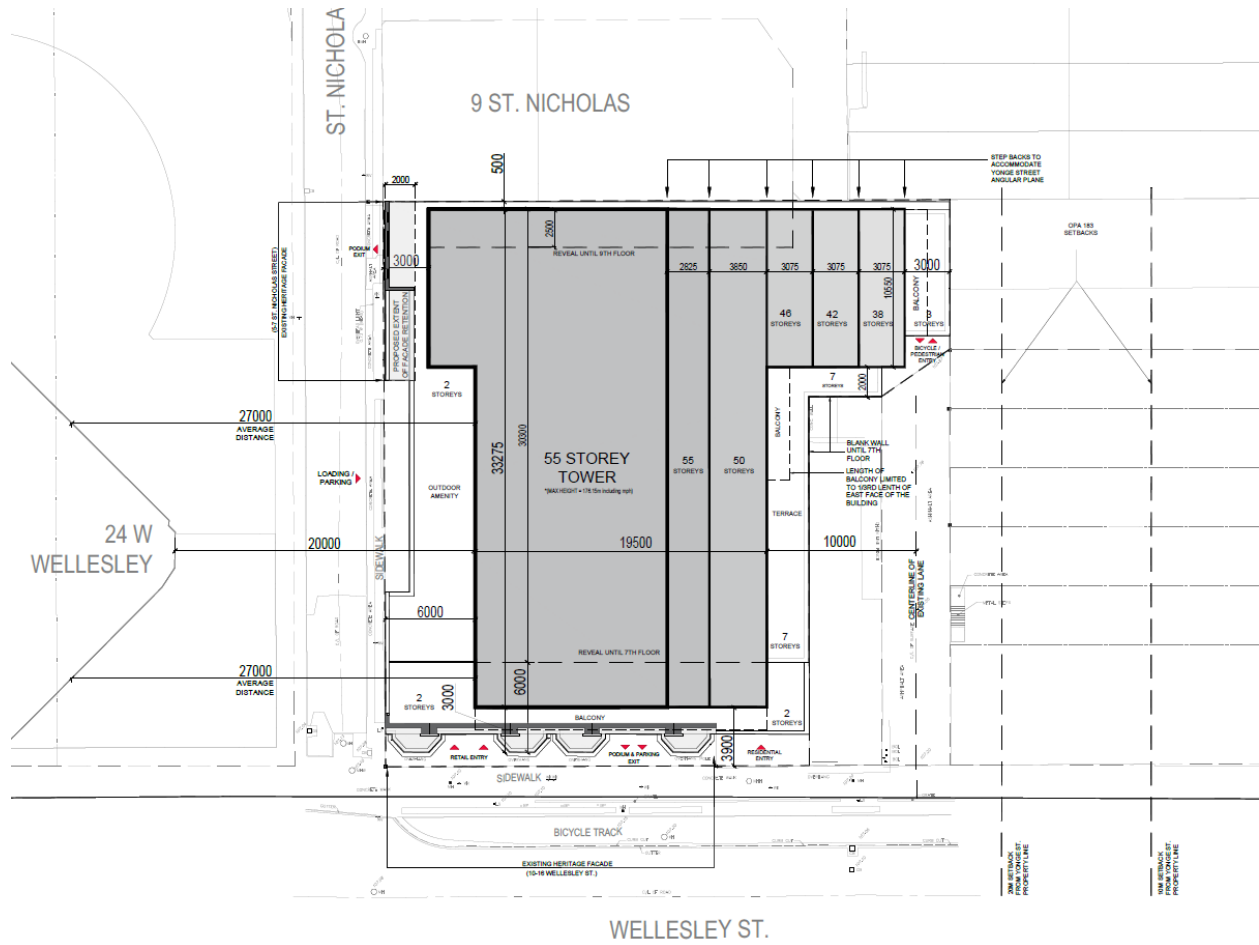
Photograph of the principal (east) elevation of 586 Yonge Street (HPS, 2019)

Confidential Appendix A – Location Map, Photographs, and Proposal



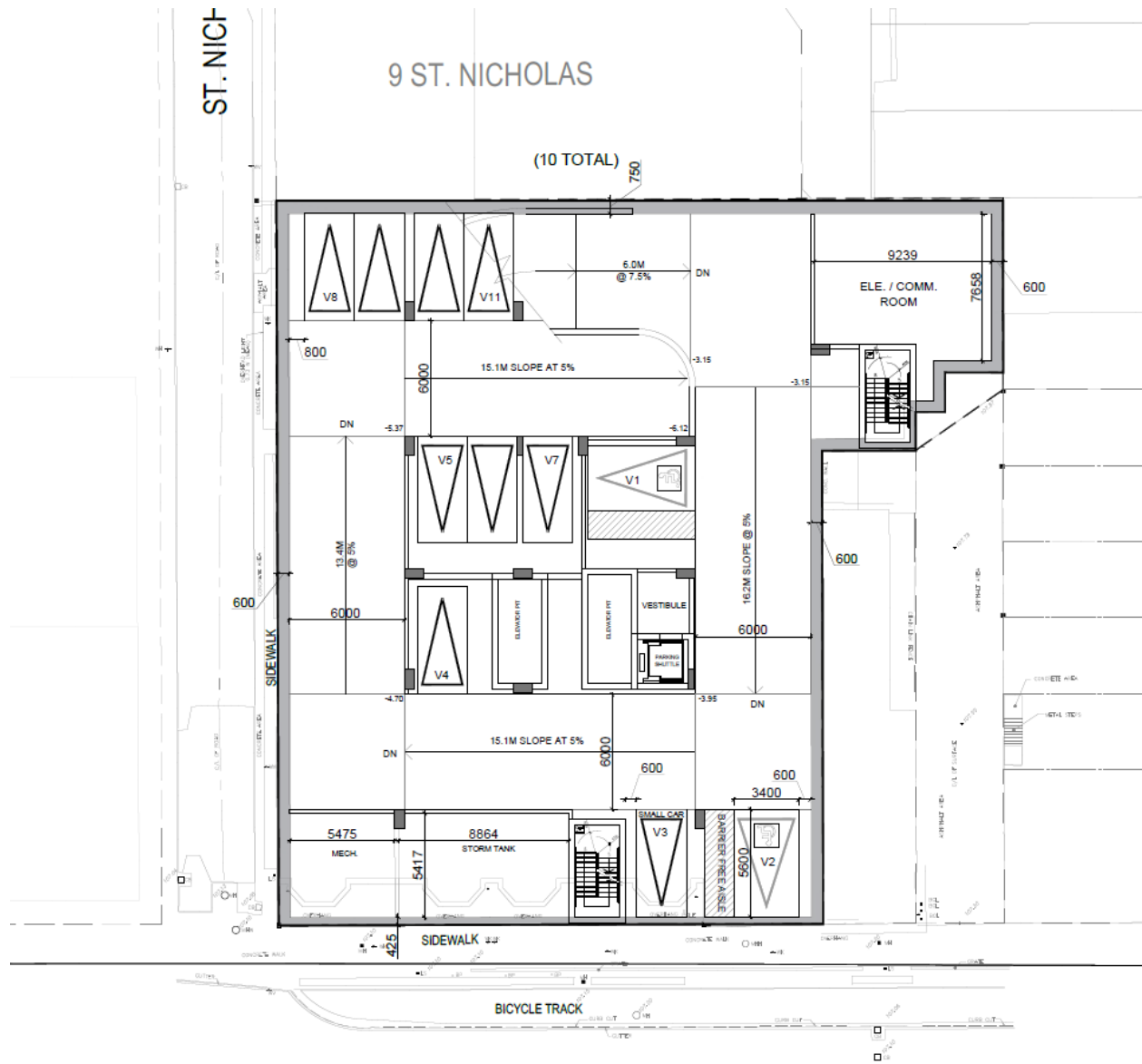
Location plan showing the development site in relation to the Historic Yonge Heritage Conservation District (Goldsmith Borgal and Company Ltd. Architects). Note that the exact boundaries of the development site are not shown.

Confidential Appendix A – Location Map, Photographs, and Proposal



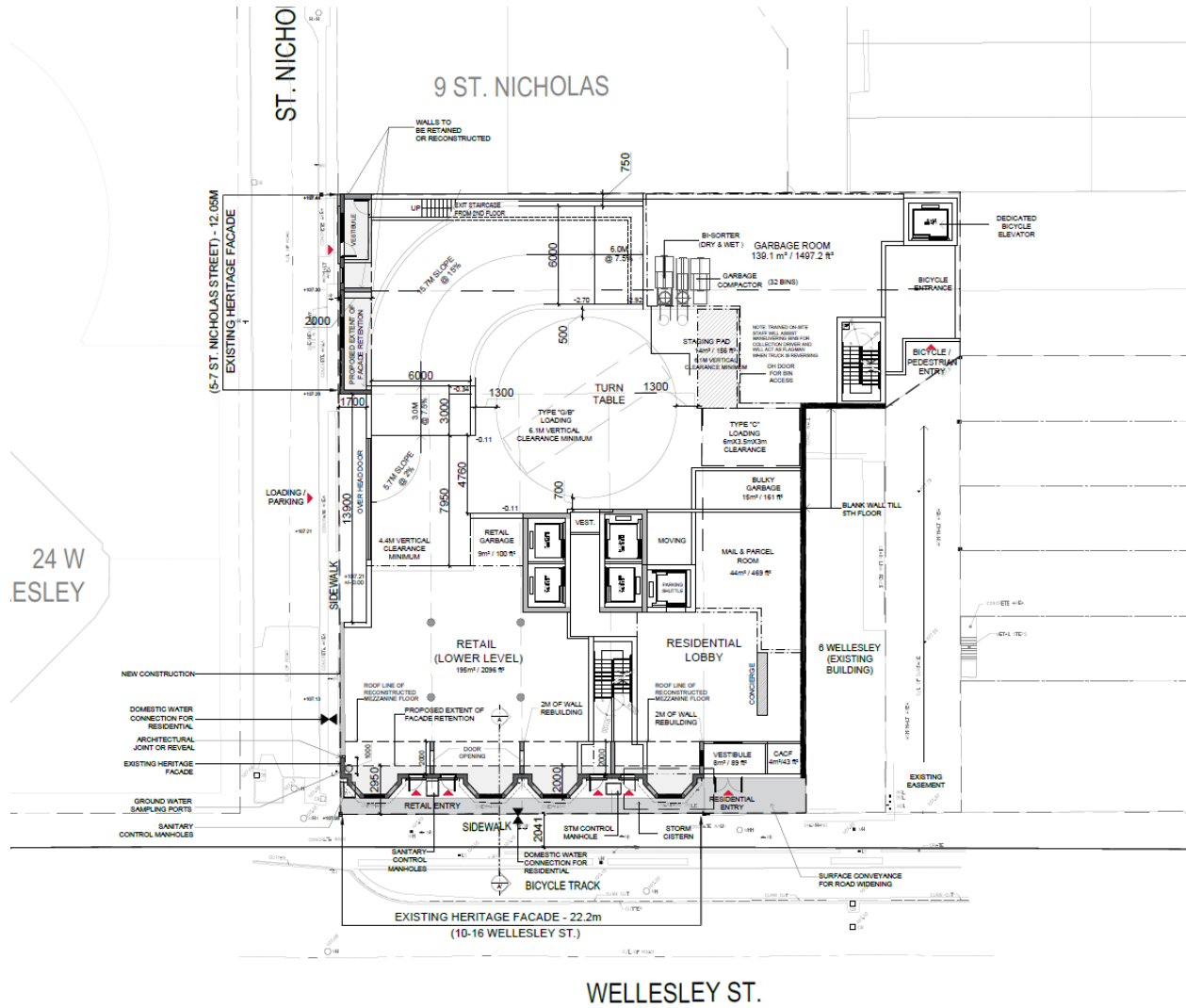
Site plan of the proposed development.

Confidential Appendix A – Location Map, Photographs, and Proposal

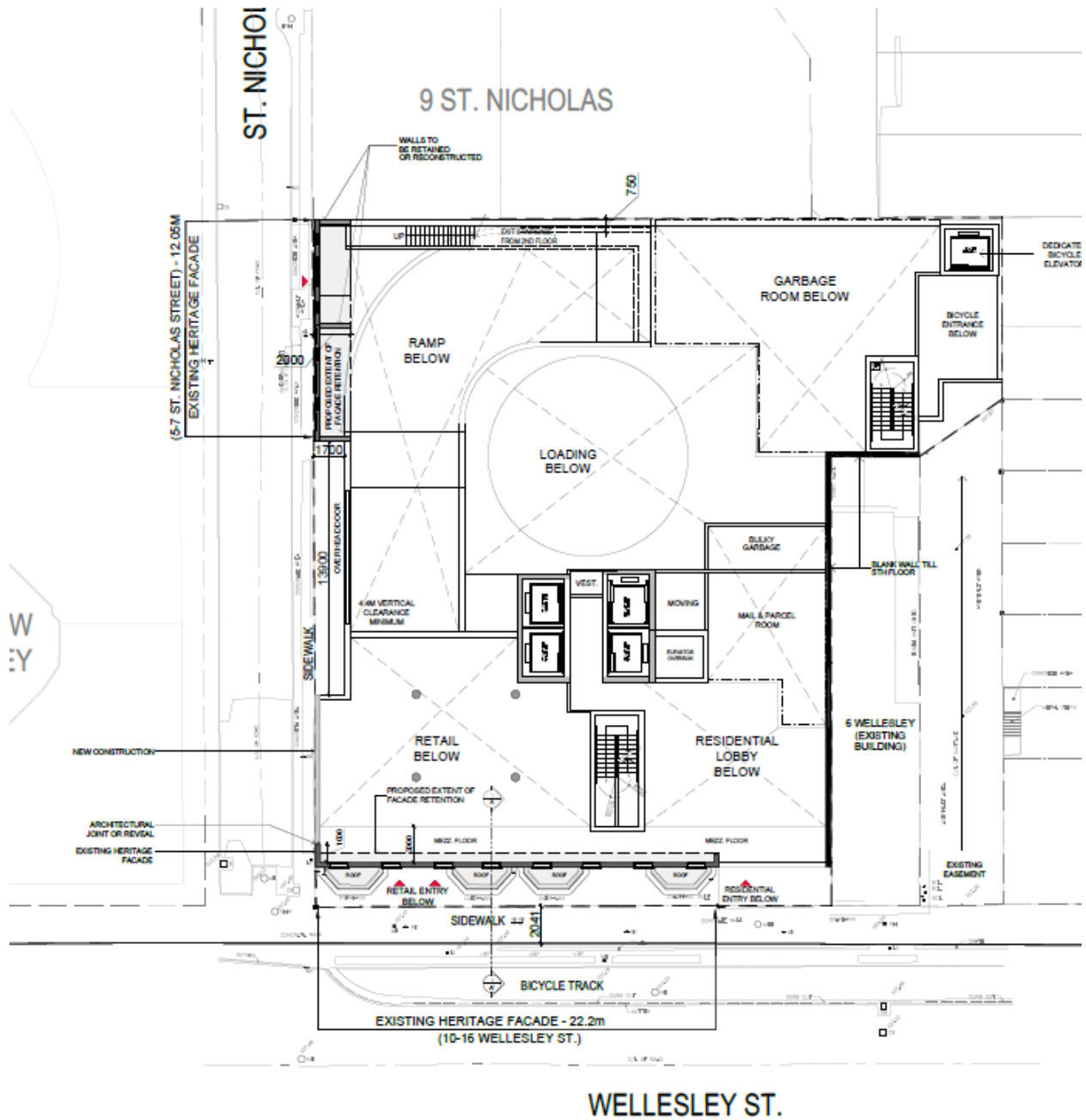


P1 floor plan of the proposed development.

Confidential Appendix A – Location Map, Photographs, and Proposal

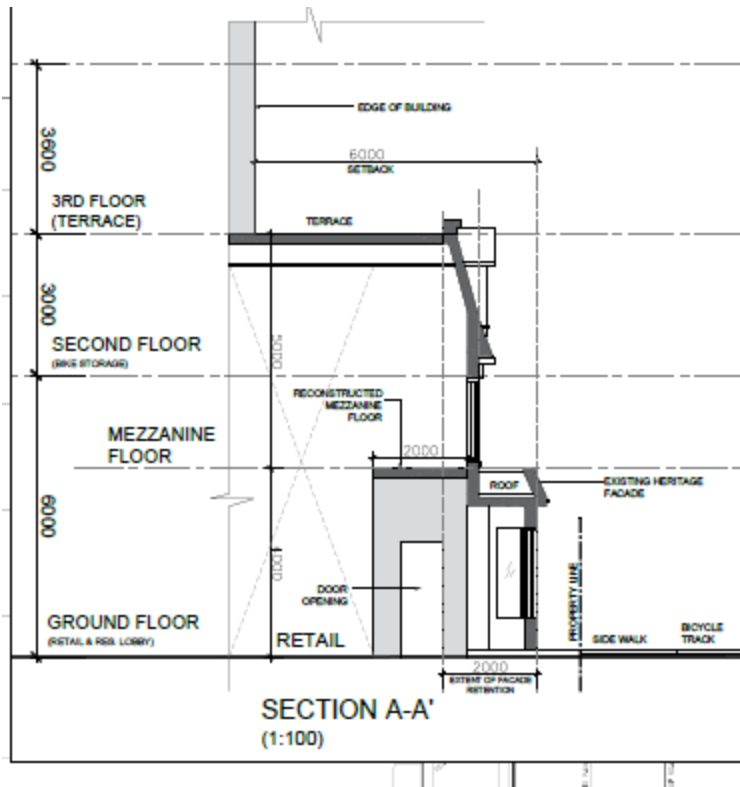


Ground floor plan of the proposed development.



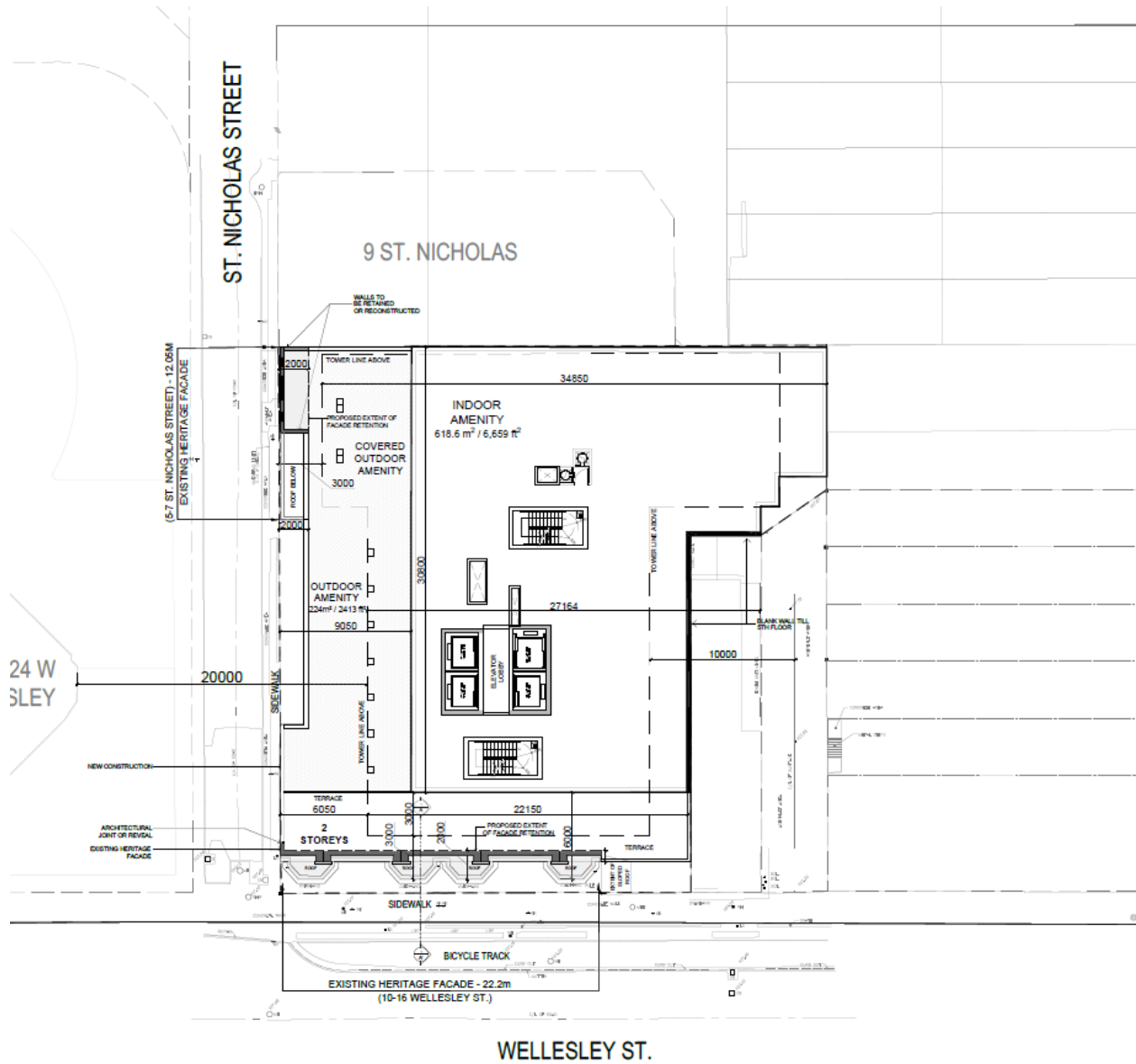
Second floor plan of the proposed development.

Confidential Appendix A – Location Map, Photographs, and Proposal



North south section through the row houses illustrating the partial mezzanine and its relationship to the existing window openings.

Confidential Appendix A – Location Map, Photographs, and Proposal



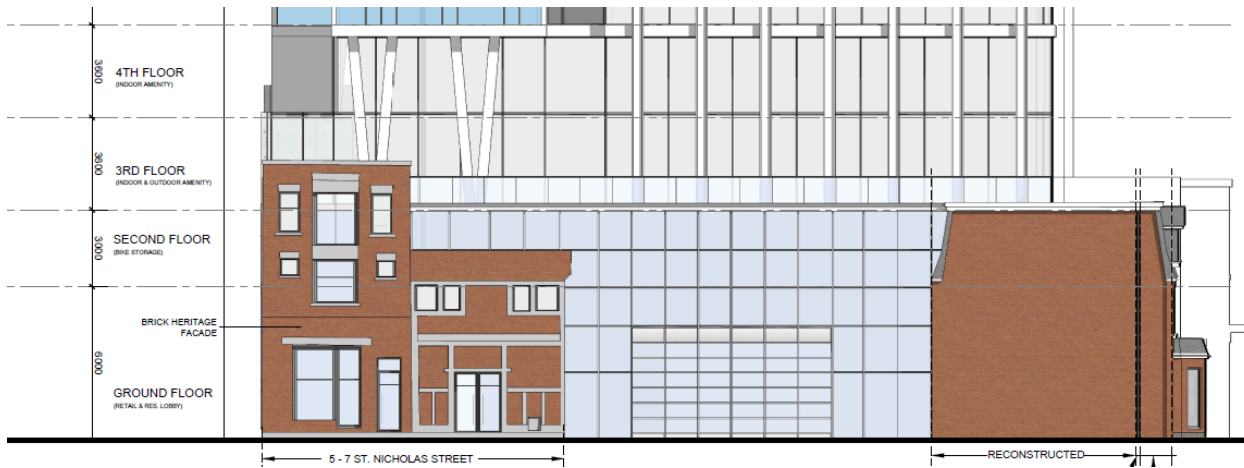
Third floor plan of the proposed development.

Confidential Appendix A – Location Map, Photographs, and Proposal

Third floor plan



South elevation of the proposed development showing the row houses integrated into the new building.



West elevation of the proposed development showing the row houses, and 5 and 7 St. Nicholas Street integrated into the new building

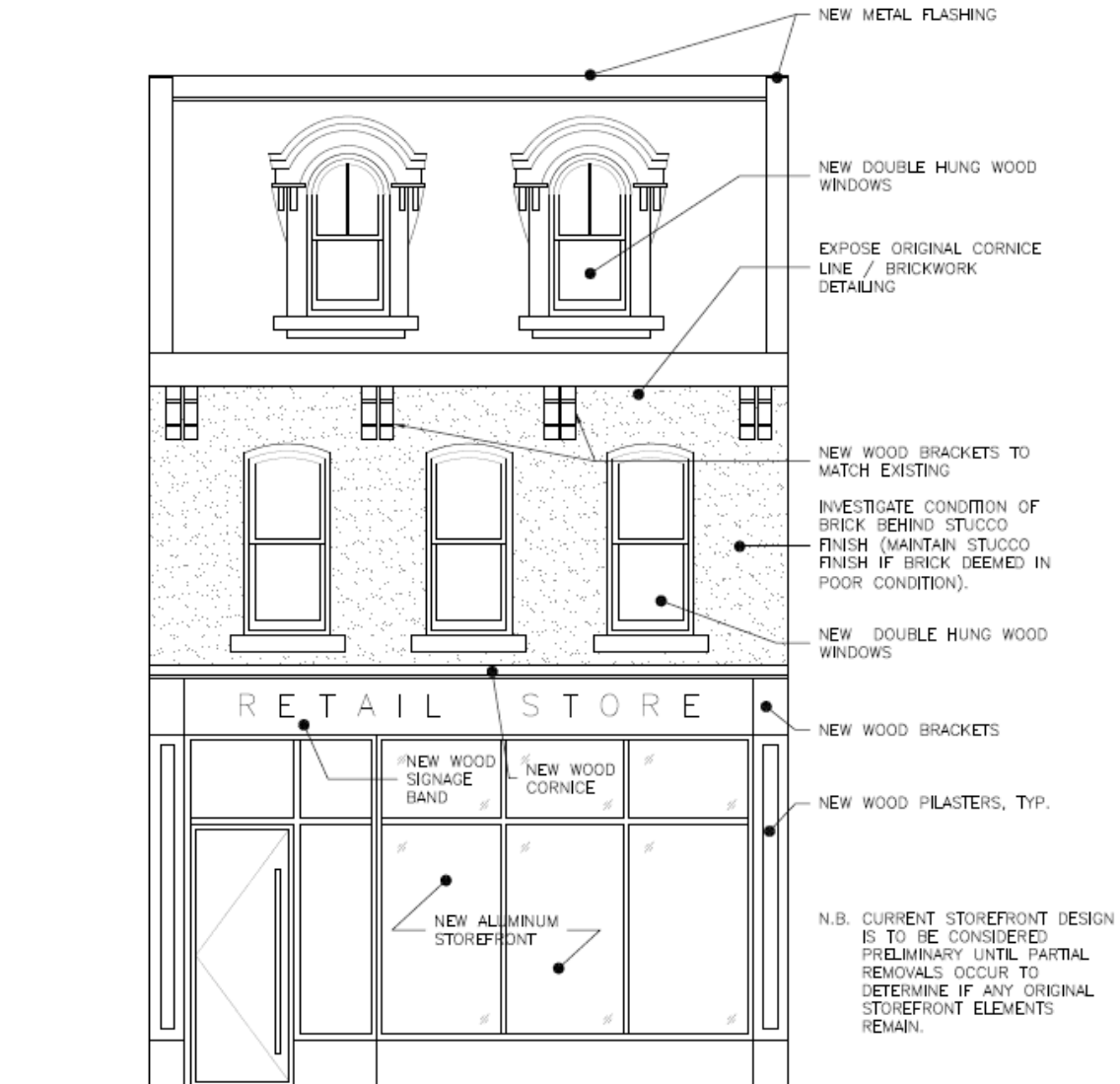
Confidential Appendix A – Location Map, Photographs, and Proposal



Proposed restoration concept for the row houses.

Confidential Appendix A – Location Map, Photographs, and Proposal

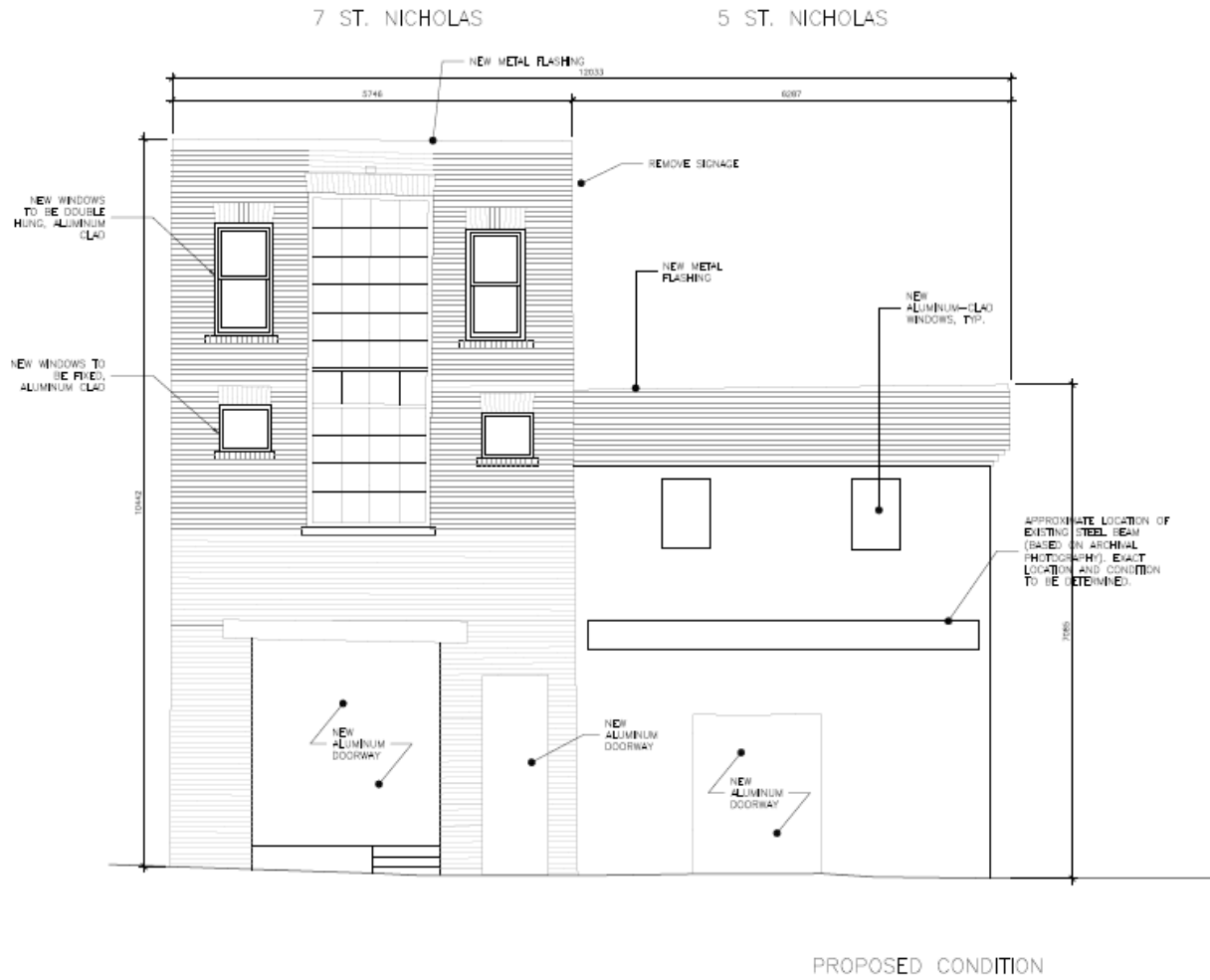
586 YONGE STREET



PROPOSED CONDITION

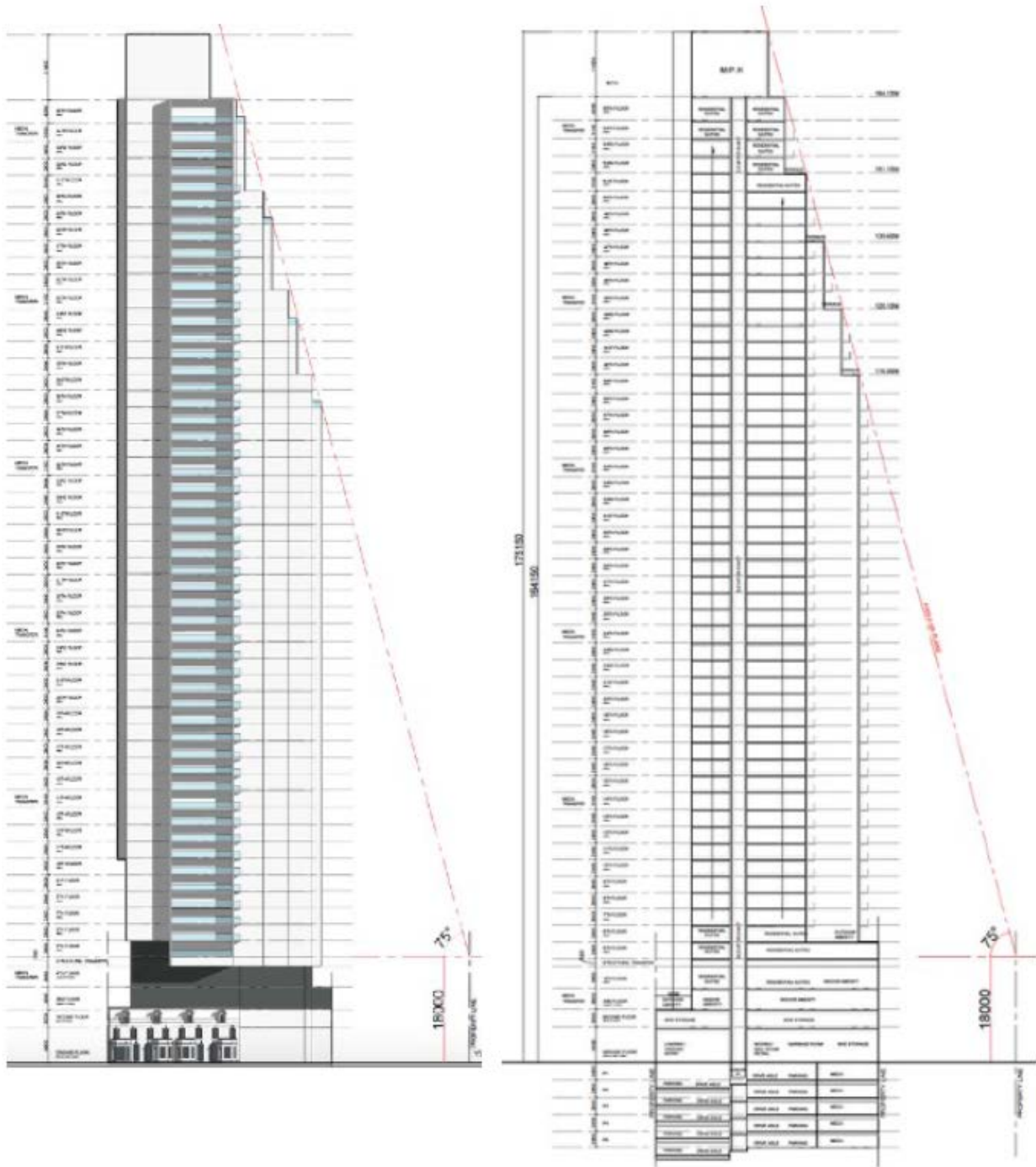
Proposed restoration strategy for 586 Yonge Street

Confidential Appendix A – Location Map, Photographs, and Proposal



Proposed restoration strategy for the St. Nicholas Street properties.

Confidential Appendix A – Location Map, Photographs, and Proposal



Plans illustrating the proposed new building's relationship to the 75 degree angular plane as measured from Yonge Street.