

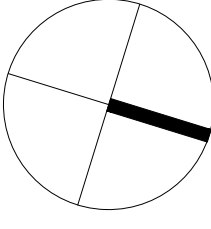
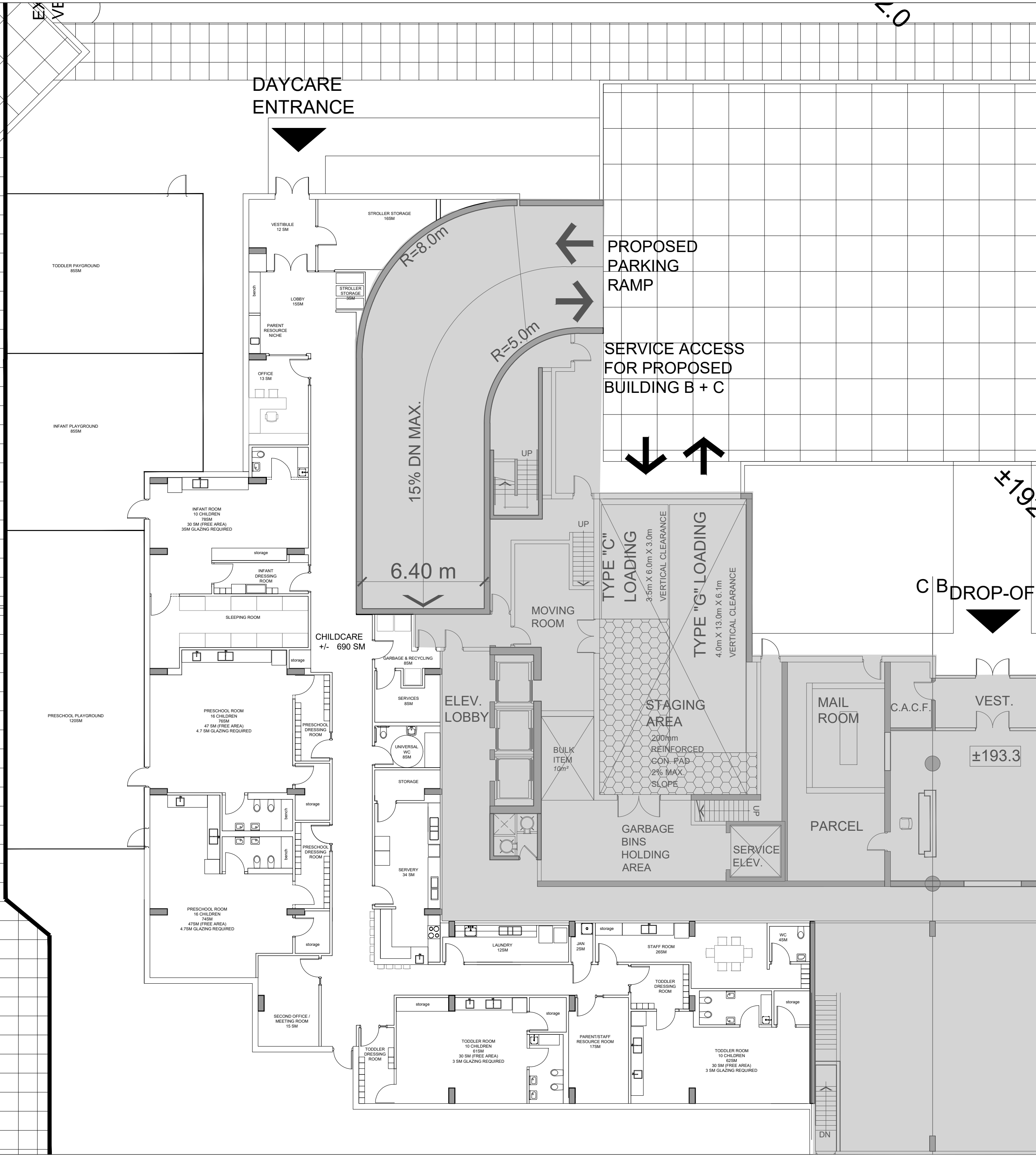
**CC13.6 - Confidential Appendix D to Confidential Attachment 1 -
made public on December 20, 2019**

WITHOUT PREJUDICE/CONFIDENTIAL

Fisherville Childcare Centre 62 Child Care Spaces November 5, 2019			
Item No.	Room Name	Ministry Required Free Area (sm)	Provided (sm)
1	Office Space		13
2	Parent / Staff Resource Room		17
3	Meeting/Second Office		15
4	Laundry/Toy Wash Room		12
5	Kitchen		34
6	Staff Washrooms (s) / BF		12
7	Stroller Storage (Centre & Parent)		22
8	Staff Room		26
9	Front Lobby		15
10	Janitorial		2
11	Overall Infant Playroom (1) Includes Sleep Rm, Dressing Rm & WC		79
	Infant Play Area	28	30
12	Toddler Playrooms (2) Includes Dressing Rm & WC		114
	Toddler Play Area	56	60
13	Preschool Playrooms (2) Includes Dressing Rm & WC		150
	Preschool Play Area	90	94
14	Mechanical / Electrical Room		8
15	Garbage and Recycle Room		8
16	Entrance Vestibule		12
TOTAL AREA			539
17	Playgrounds (3)		290

DRAFT - WITHOUT PREJUDICE

PUBLIC PARK



01

GROUND FLOOR CHILDCARE PLAN

NOVEMBER 1, 2019

PROJECT No. 36805 SCALE 1:150

CHILDCARE SCHEMATIC DESIGN
6040 BATHURST ST. & 5 FISHERVILLE RD - PROPOSED RESIDENTIAL DEVELOPMENT
TORONTO