

## **Assumption of Services, Registered Plan 66M-2517, 55 Ypres Road - Icon Partners Limited.**

**Date:** April 2, 2019  
**To:** Etobicoke and York Community Council  
**From:** Director, Engineering Review, Engineering and Construction Services  
**Wards:** Ward 5 - York South-Weston

### **SUMMARY**

---

This report recommends that the municipal services installed under the terms of the Subdivision Agreement between Icon Partners Limited and the City of Toronto for Plan 66M-2517, dated June 18, 2014, be assumed by the City.

### **RECOMMENDATIONS**

---

The Director, Engineering Review recommends that City Council:

1. assume the services installed at George Brownlee Court and that the City formally assume the road within the Plan of Subdivision.
2. authorize the Legal Services Division to release the portion of the performance guarantee held with respect to this Plan of Subdivision.
3. direct that an assumption By-law be prepared to assume the public highway and municipal services within the Subdivision at George Brownlee Court.
4. authorize and direct the City Solicitor to register the assumption By-law in the Land Registry Office at the expense of the Owner.
5. authorize the City Clerk and Treasurer to sign any release or other documentation necessary to give effect thereto.
6. authorize the appropriate City officials to transfer ownership of the street lighting system constructed within the Plan of Subdivision at George Brownlee Court to Toronto Hydro.

## **FINANCIAL IMPACT**

---

The Recommendations have no financial impact beyond what has already been approved in the current year's budget.

## **DECISION HISTORY**

---

The subject subdivision shown on the attached map is approximately 1.16 ha in area and was a former Toronto District School Board (TDSB) property that was occupied by Silverthorn Junior Public School. The site is now occupied by 7 residential detached lots, 36 residential semi-detached lots, an approximately 641 square metre public park and a new 16.5 metre-wide public street extending south from Ypres Road and terminating in a cul-de-sac. The municipal services required under the terms of the Subdivision Agreement are in an acceptable condition to be assumed by the City for the Plan 66M-2517 dated June 18, 2014, between Icon Partners Limited and the City of Toronto. Toronto Hydro has also provided sign-off.

## **COMMENTS**

---

Obligations respecting the roads and municipal services contained in the Subdivision Agreement have been satisfied. The relevant City divisions have provided clearance with respect to the assumption of the roads and municipal services. It is now appropriate for Council to pass an assumption by-law to assume the municipal services and road works in subdivision Plan 66M-2517.

## **CONTACT**

---

Ashraf Hanna, P.Eng., Manager, Development Engineering, Etobicoke York District  
Telephone: 416-394-8383, email: [Ashraf.Hanna@toronto.ca](mailto:Ashraf.Hanna@toronto.ca)

Giovanni Baldesarra, P.Eng., Senior Engineer, Development Engineering  
Etobicoke York District  
Telephone: 416-394-8398, email: [Giovanni.baldesarra@toronto.ca](mailto:Giovanni.baldesarra@toronto.ca)

## **SIGNATURE**

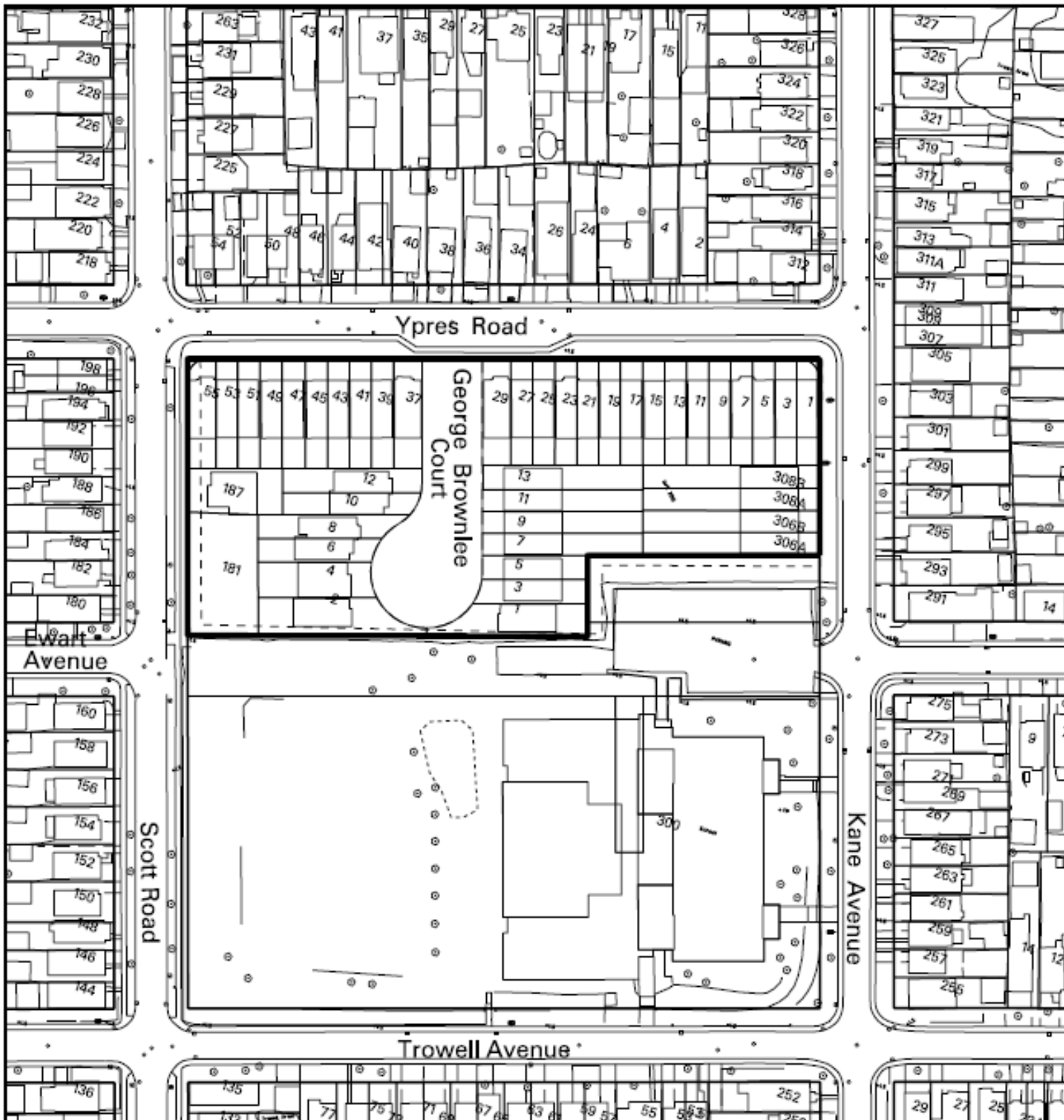
---

John P. Kelly, P.Eng  
Director, Engineering Review  
Engineering & Construction Services

## **ATTACHMENTS**

---

Attachment No. 1: 66M-2517 Assumption of Services Site Map



PROPERTY INFORMATION SHEET

ATTACHMENT #1 – 66M-2517

ASSUMPTION OF SERVICES SITE MAP



ENGINEERING & CONSTRUCTION SERVICES  
ENGINEERING SUPPORT SERVICES  
LAND & PROPERTY SURVEYS

NOTE:  
THIS SKETCH HAS BEEN  
COMPILED FROM OFFICE  
RECORDS. MEASUREMENTS  
ARE APPROXIMATE

CHECK BY JOHN HOUSE  
PREPARED BY: DWAYNE PITT

WARD 5 – YORK SOUTH-WESTON  
DATE: JANUARY 30, 2019

SKETCH No. PS-2019-010