

## **Permanent Closure of the Boulevard Lands on the North-West Corner of Phoebe Street and Soho Square**

**Date:** August 28, 2019  
**To:** Toronto and East York Community Council  
**From:** Director, Transportation Planning and Capital Program,  
Transportation Services  
**Wards:** Ward 10 – Spadina-Fort York

### **SUMMARY**

---

Transportation Services recommends that the boulevard lands on the north-west corner of Phoebe Street and Soho Square be permanently closed to allow for the transfer of Operational Management of the lands to Parks, Forestry and Recreation for a future enhanced green space.

### **RECOMMENDATIONS**

---

Transportation Services recommends that:

1. City Council authorize the permanent closure of the boulevard lands on the north-west corner of Phoebe Street and Soho Square, shown as Part 1 on Sketch No. PS-2017-025 (the "Highway") and Part 1 on Reference Plan 66R-30774, attached to the report dated August 28, 2019, from the Director, Transportation Planning and Capital Program, Transportation Services.
2. City Council enact a by-law substantially in the form of the draft by-law attached as Appendix "A" to the report dated September 16, 2019, from the Director, Transportation Planning and Capital Program, Transportation Services.

### **FINANCIAL IMPACT**

---

The 2019-2028 Council Approved Capital Budget and Plan for Parks, Forestry and Recreation includes \$0.250 million for the development of Phoebe Street and Soho Square, with cash flow of \$0.025 million in 2020 and \$0.225 million in 2021. Parks, Forestry and Recreation will assume responsibility to maintain the boulevard lands as public green space upon closure with operating costs to be included in future Operating Budget submissions.

The Chief Financial Officer and Treasurer has reviewed this report and agrees with the financial impact information.

## **DECISION HISTORY**

---

At its meeting of September 20, 2017, Real Estate Service's Property Management Committee recommended the transfer of Operational Management of the boulevard lands to Parks, Forestry and Recreation (PF&R) conditional upon City Council approving the permanent closure of the Highway.

By DAF No. 2018-083, dated March 9, 2018, the Deputy City Manager, Internal Corporate Services, authorized the General Manager, Transportation Services, to give notice to the public of a proposed by-law to close the Highway in accordance with the requirements of the City of Toronto Municipal Code Chapter 162 and the Municipal Class Environmental Assessment for Schedule "A+" activities.

## **COMMENTS**

---

Parks, Forestry and Recreation in consultation with the local Councillor, identified the opportunity for the transformation of the untraveled highway lands at the north-west corner of Phoebe Street and Soho Square into an enhanced public green space. The lands are located in an area with the lowest level of local parkland provision and can provide good local green space utility given their size, shape, and corner location with high accessibility and visibility. The lands are located within Toronto's downtown and transforming them into green space aligns with the recently approved Downtown Secondary Plan (TOcore), which promotes the integration of open spaces into the public realm through improved design, access and connections to the broader public realm network. Following Council's approval of the permanent closure of the highway lands, Parks, Forestry and Recreation will undertake design and construction of site improvements.

City Council, at its meeting of March 7, 2019, approved the 2019 Parks, Forestry and Recreation Capital Budget and future year commitments through item EX2.5 (197-207), including \$0.250 million for the development of Phoebe Street and Soho Square.  
<http://app.toronto.ca/tmmis/viewAgendaItemHistory.do?item=2019.EX2.5>

Transportation Services has reviewed the feasibility of closing the Highway and has determined that the Highway can be closed with Operational Management transferred to Parks, Forestry and Recreation, subject to the reservation of permanent easements to be granted to the following public utilities, as set out below:

Enbridge Gas – existing gas infrastructure;

Toronto Hydro – existing hydro duct bank;

Rogers Cable – buried fiber TV plant;

Bell Canada – Bell maintenance hole and conduit; and

Zayo (formerly Allstream) – existing utility plant.

The closing process requires approval from City Council. The draft by-law is an Appendix to this report that recommends the closure of the Highway and is tabled at the same Toronto and East York Community Council meeting at which the public has the opportunity to speak to the matter if they wish to do so.

The requirements of the Municipal Class Environmental Assessment for Schedule "A+" activities will be met during the posting of the public notice on the notices page of the City's web site for at least five (5) working days prior to the Toronto and East York Community Council meeting at which the proposed by-law to close the Highway will be considered.

## **CONTACT**

---

Lukasz Pawlowski, Manager  
Transportation Development Planning & Review  
Toronto East York and Scarborough Districts  
Phone: 416-392-7713; Fax: 416-392-1920  
E-mail: [Lukasz.Pawlowski@toronto.ca](mailto:Lukasz.Pawlowski@toronto.ca)

## **SIGNATURE**

---

---

Ashley Curtis, Director  
Transportation Planning and Capital Program  
Transportation Services

## **ATTACHMENTS**

---

Attachment 1 – Appendix "A" – Draft By-law  
Attachment 2 – Sketch No. PS-2017-025, dated March 20, 2017  
Attachment 3 – Reference Plan 66R-30774

P:\2019\Cluster B\Tra\Toronto and East York\top\Ts201933te.top.doc - jt

**Attachment -1: APPENDIX "A"**

Authority: Toronto and East York Community Council Item TE\_\_\_\_, as adopted by City of Toronto Council on October 2, 3, 2019.

**CITY OF TORONTO**

**Bill**

**BY-LAW -2019**

**To permanently close the Boulevard Lands on North-West Corner of  
Phoebe Street and Soho Square**

Whereas it is recommended that the boulevard lands legally described as Part of Phoebe Street, Registered Plan D10, City of Toronto, designated as Part 1 on Plan 66R-30774, be permanently closed as a public highway; and

Whereas notice of the proposed by-law to permanently close part of the said highway was posted on the notices page of the City's web site in accordance with the requirements of City of Toronto Municipal Code, Chapter 162 and the Toronto and East York Community Council heard any person who wished to speak to the matter at its meeting held on September 16, 2019,

The Council of the City of Toronto enacts:

1. The public highway described as follows, is hereby permanently closed as a public highway:

Part of Phoebe Street, Registered Plan D10, City of Toronto, designated as Part 1 on Plan 66R-30774, being part of PIN 21205-0202.

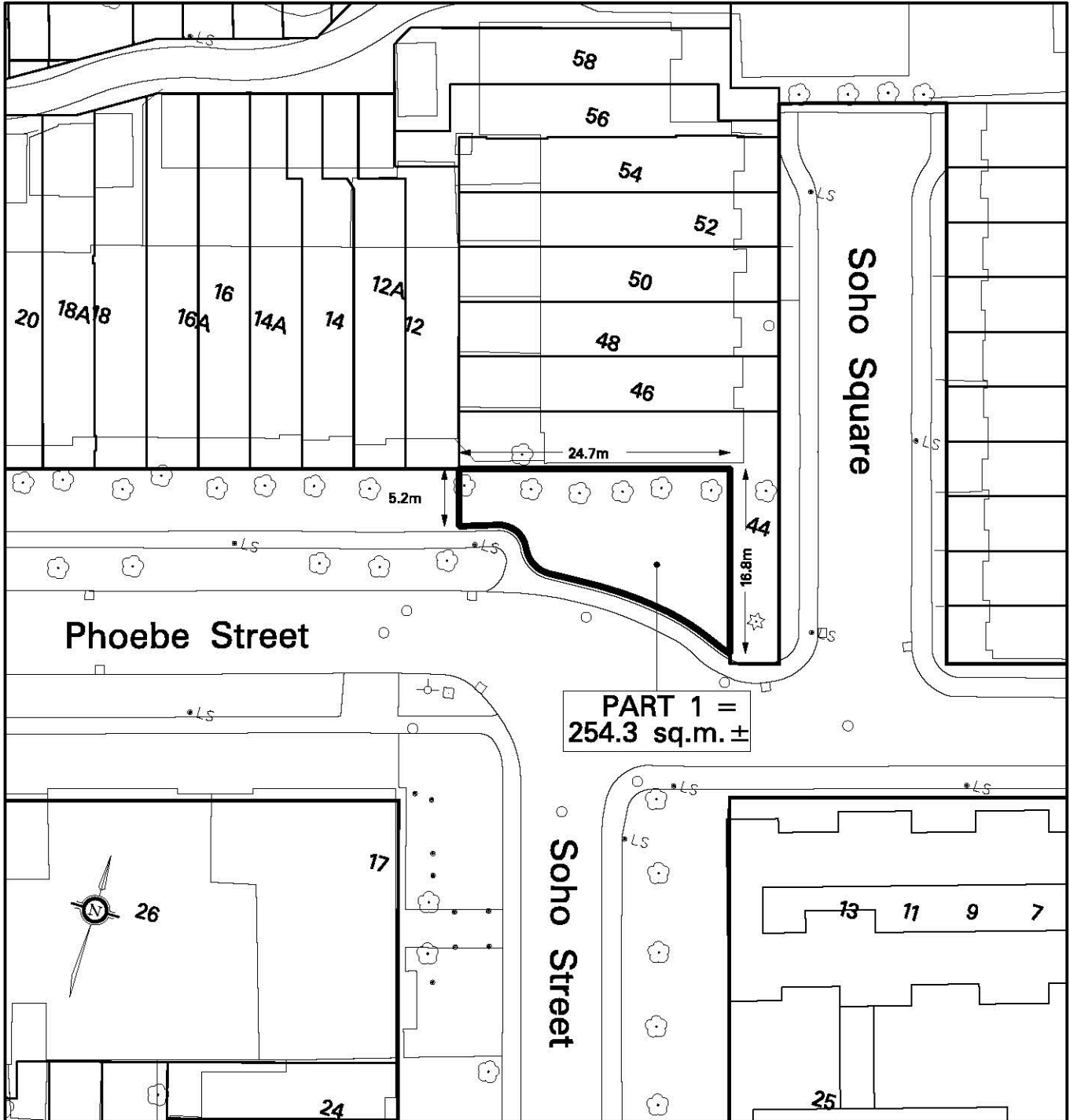
Enacted and passed on \_\_\_\_\_, 2019

Frances Nunziata,  
Speaker

Ulli S. Watkiss,  
City Clerk

(Seal of the City)

Attachment 2 – Sketch No. PS-2017-025



PART 1 =  
254.3 sq.m. ±



PROPERTY INFORMATION SHEET  
SKETCH SHOWING A PORTION OF PHOEBE STREET  
WEST OF SOHO SQUARE

NOTE:  
THIS SKETCH HAS BEEN  
COMPILED FROM OFFICE  
RECORDS. MEASUREMENTS  
ARE APPROXIMATE

CHECK BY JOHN HOUSE  
PREPARED BY: DWAYNE PITT

WARD 20 – TRINITY-SPADINA  
DATE: MARCH 20, 2017

SKETCH No. PS-2017-025

