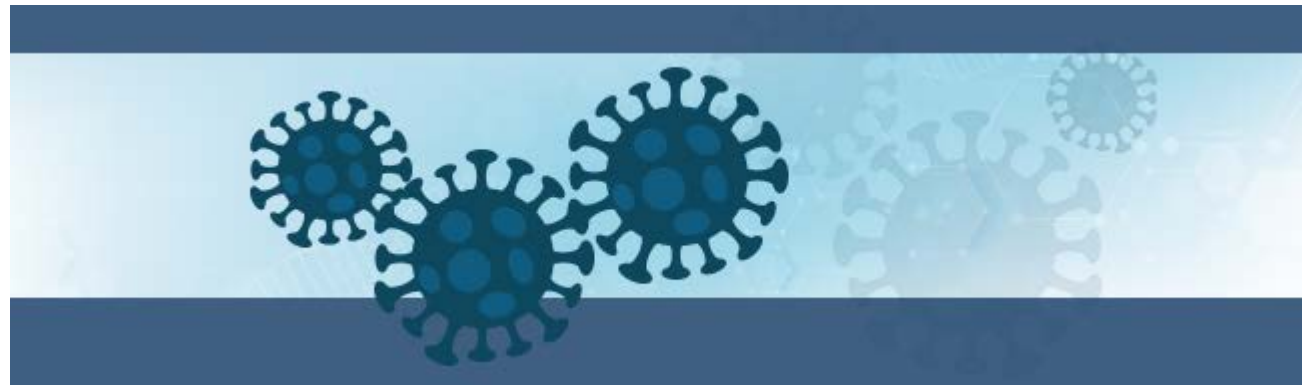


# Response to COVID-19: Update Presentation to the Board of Health



**Toronto Public Health  
December 14, 2020**

## SUMMARY OF COVID-19 CASES IN TORONTO



All Cases	
Case Count*	49,236
Recovered Cases	42,294
City Incidence Rate per 100,000 People	1,802
Fatal Cases	1,717
Ever Hospitalized	3,514
Ever in ICU	695

Currently Hospitalized	288
Currently in ICU	74

As of December 13, 2020



CASES IN THE COMMUNITY	79%
Recovered Cases	33,587
Median Age At Time of Illness	41
Percent Female	48%
Percent Male	52%
Fatal Cases	395
Median Age of Deaths	75

OB ASSOCIATED CASES**	21%
Recovered Cases	8,707
Median Age At Time of Illness	59
Percent Female	62%
Percent Male	37%
Fatal Cases	1,322
Median Age of Deaths	88

\*Includes confirmed and probable cases

\*\*Outbreak associated cases include persons with COVID-19 within a defined group or setting. These are generally in healthcare (e.g., long-term care homes, hospitals) and residential or congregate settings (e.g., homeless shelters, group homes), but can also be in workplaces and other settings

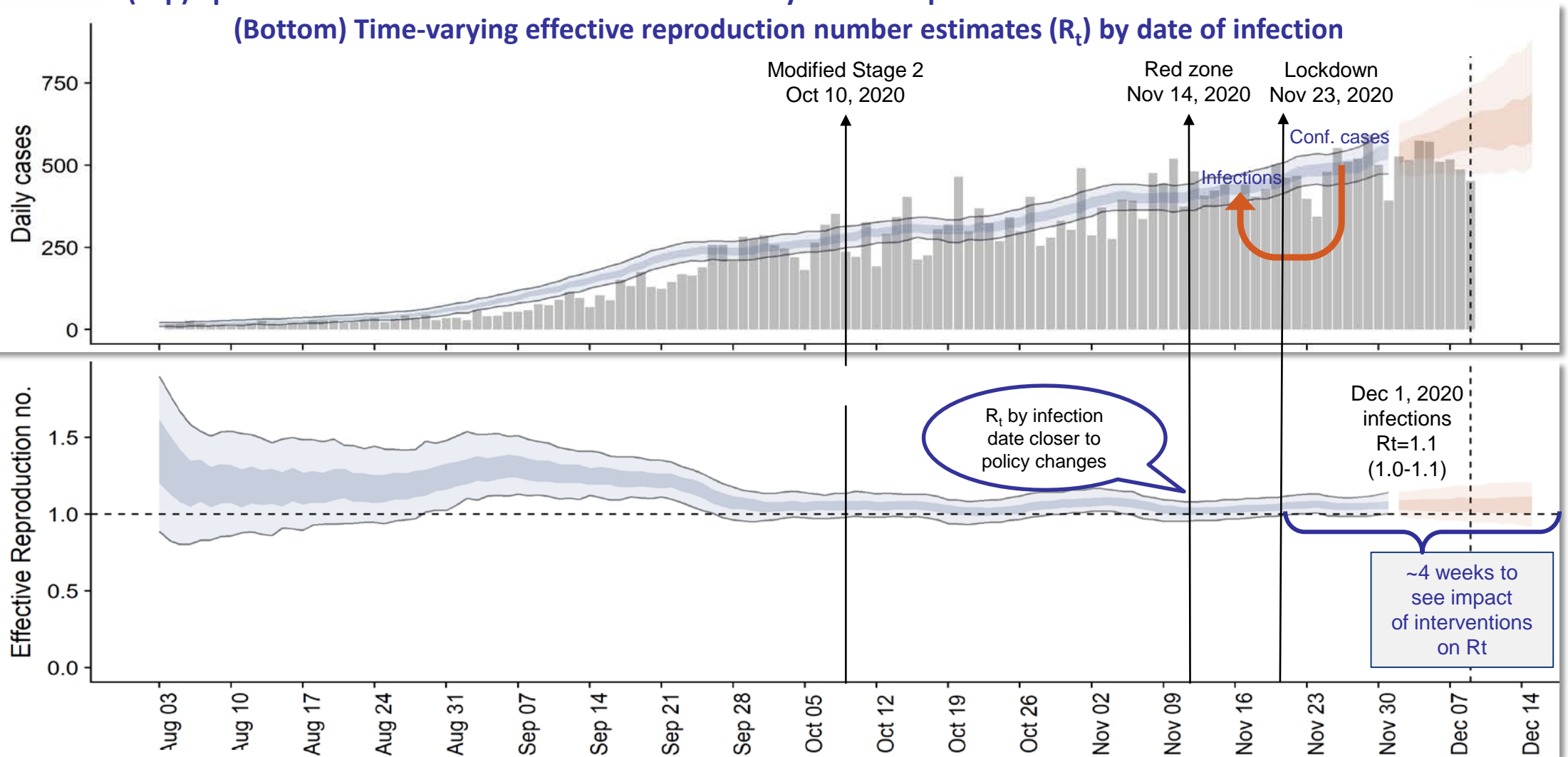
†Gender was unknown or other for some cases

# Understanding the impact of a policy intervention: Effective reproduction number ( $R_t$ )

(Top) Epidemic curve of confirmed COVID-19 cases by date of report and their estimated date of infection

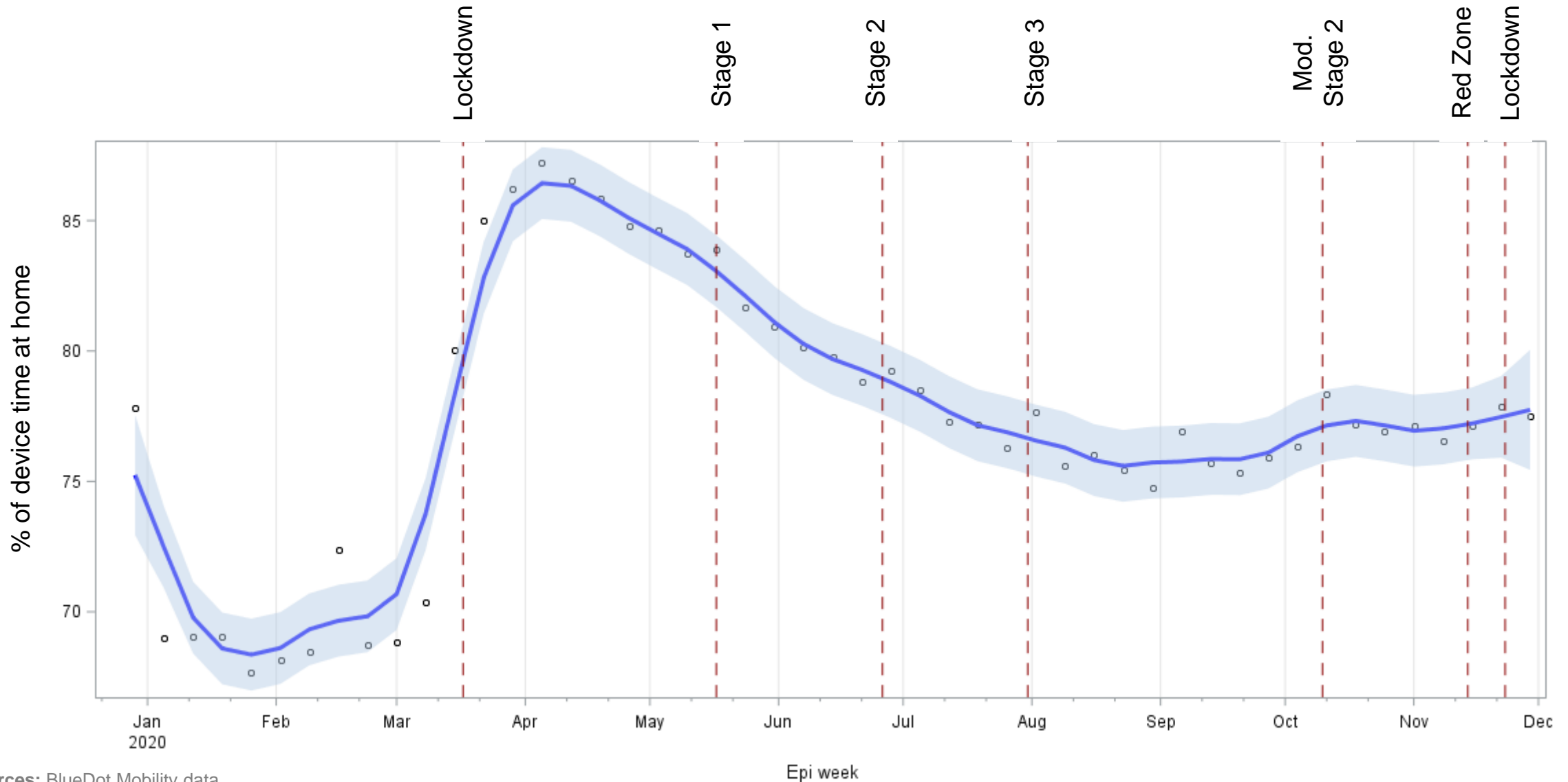
(Bottom) Time-varying effective reproduction number estimates ( $R_t$ ) by date of infection

Confirmed case data Aug 1 – Dec 9, 2020



Estimate Nowcast Forecast

# Current restrictions have had less of an impact on mobility than in the spring



# Monitoring the 28-day lockdown

## COVID-19 Monitoring Dashboard

[Download Excel Data](#)

[Technical Notes](#)

Current Overall Status: **Red**

Red

Yellow

Green



Virus Spread & Containment

Status: **Red**



Laboratory Testing

Status: **Yellow**



Health System Capacity

Status: **Green**

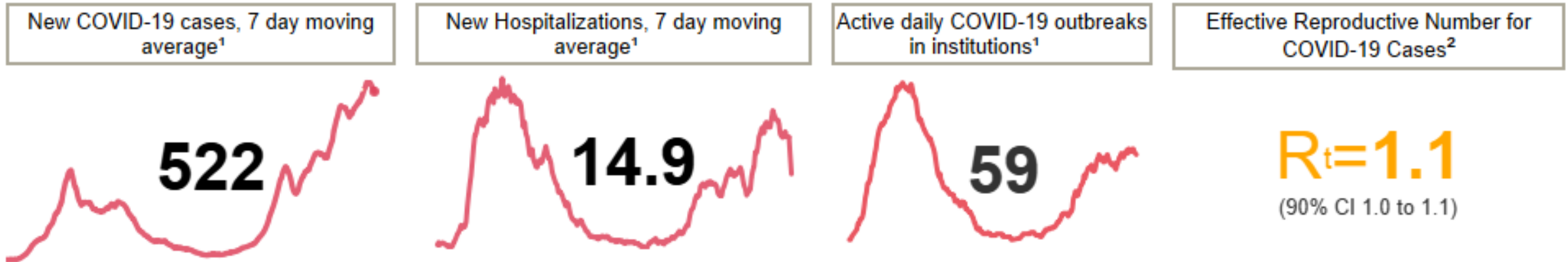


Public Health System Capacity

Status: **Red**

# Monitoring the 28-day lockdown

**Virus Spread and Containment**  
Status: RED - Indicators trending away from goals



To move to **YELLOW**

To move to **GREEN**

≤ 293 cases per day (10 cases per 100,000)

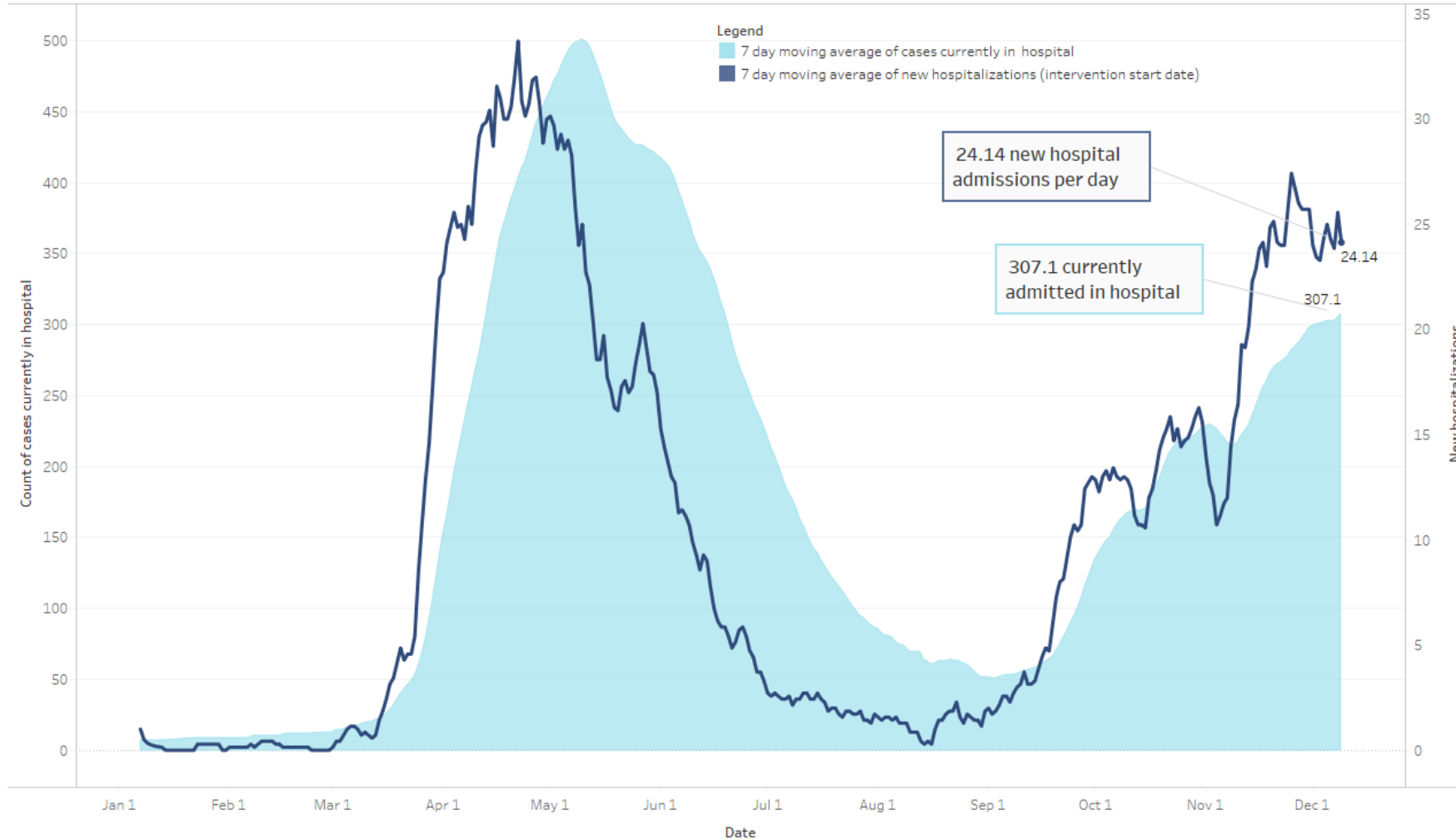
<6 new hospitalizations a day

<18 active outbreaks

$R_t < 1$

# COVID-19 hospitalizations continue to rise

Cases currently in hospital and count of daily new hospitalizations (7 day MA) - 3 day lag



**36% increase** in the 7-day moving average of hospitalizations over the most recent 4 weeks

# COVID-19 percent positivity continues to increase in younger age groups in recent weeks

COVID-19 Percent Positivity by Age Group and Testing Week, Toronto

	August	September				October				November				(Incomplete Data)
	Aug 30	Sep 6	Sep 13	Sep 20	Sep 27	Oct 4	Oct 11	Oct 18	Oct 25	Nov 1	Nov 8	Nov 15	Nov 22	Nov 29
< 4			0.46%	0.85%	1.25%	1.83%	3.01%	2.85%	3.19%	3.75%	5.55%	4.84%	4.24%	7.35%
4-13		1.18%	1.42%	1.06%	1.07%	1.64%	2.43%	4.52%	4.70%	6.17%	5.87%	7.33%	7.09%	7.06%
14-17	1.96%	2.32%	3.11%	3.60%	4.41%	4.47%	4.83%	7.42%	7.55%	7.31%	10.63%	8.94%	11.60%	10.68%
18-23	1.31%	2.34%	3.76%	5.00%	5.95%	4.30%	6.68%	6.88%	6.23%	8.26%	9.65%	8.96%	9.02%	8.87%
24-39	0.97%	1.66%	2.43%	3.73%	4.02%	3.51%	4.93%	4.85%	4.94%	5.92%	6.19%	6.35%	6.53%	6.59%
40-69	0.69%	1.05%	1.63%	2.64%	3.07%	3.10%	4.32%	4.59%	4.83%	5.49%	6.45%	5.83%	5.88%	5.55%
70+	0.27%	0.53%	0.80%	2.18%	2.74%	2.65%	3.42%	3.50%	4.76%	6.29%	4.73%	4.45%	4.19%	4.23%

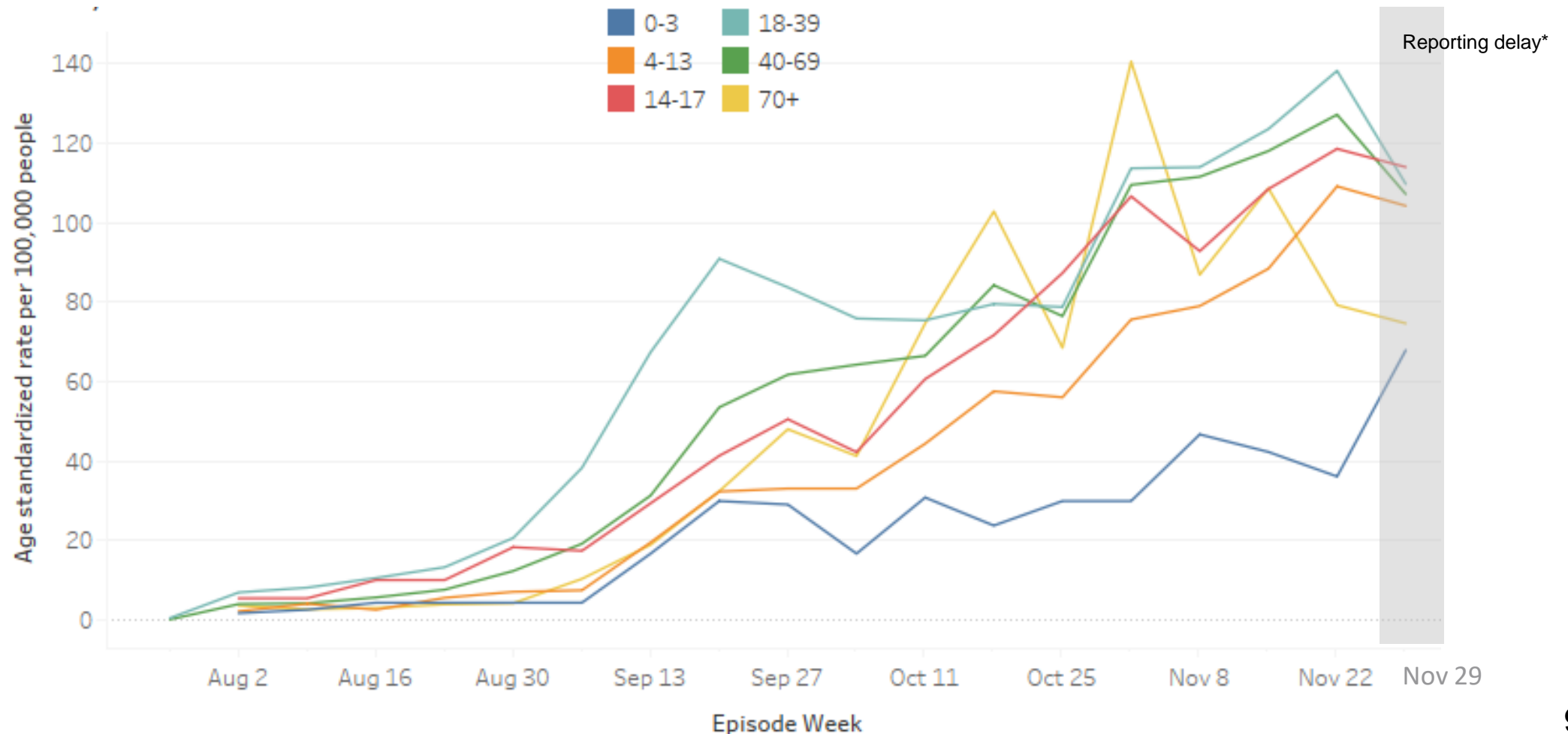
Percent Positivity





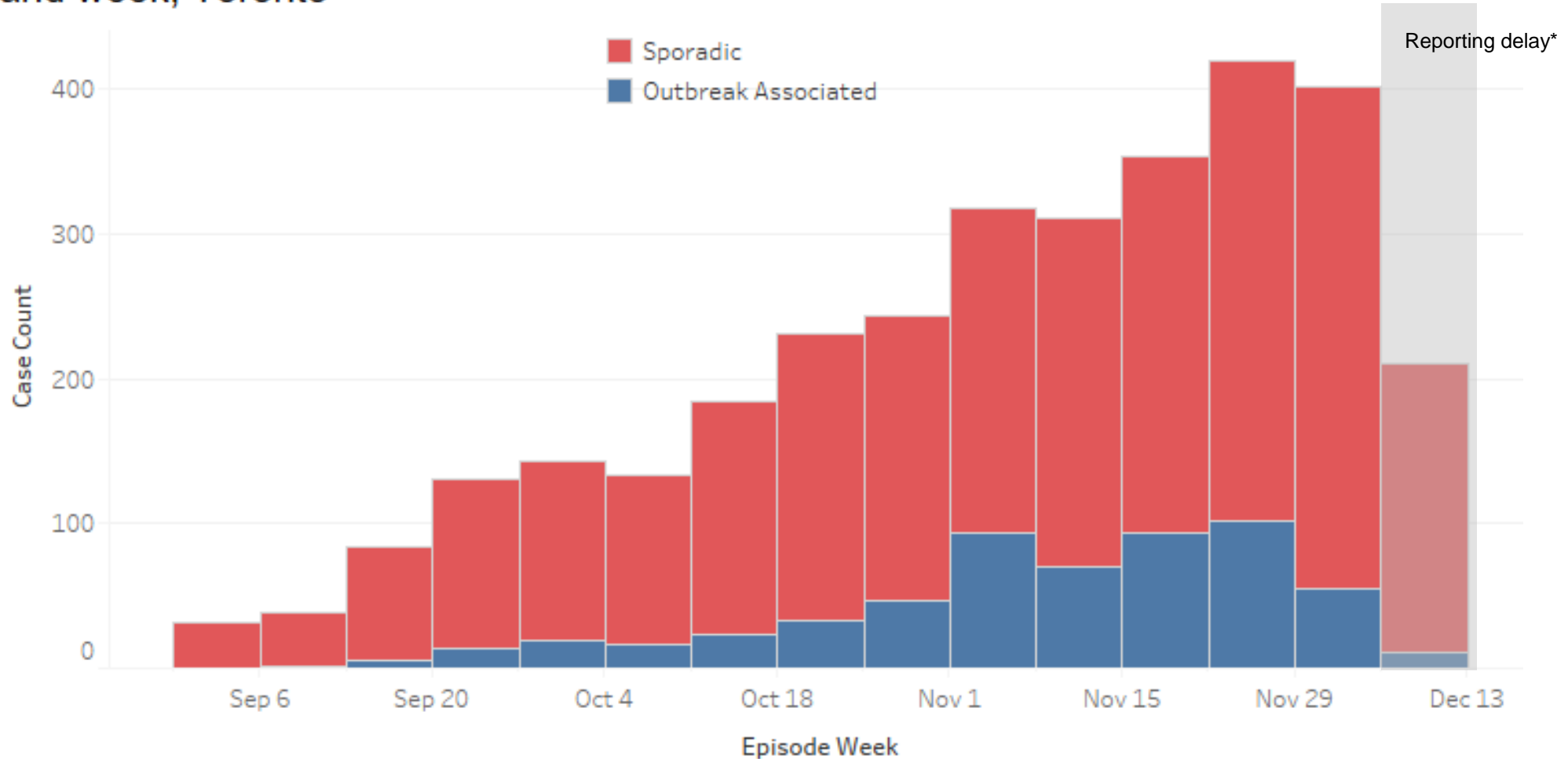
# COVID-19 cases rates continue to increase in all age groups

COVID-19 cases rates per 100,000 by age group, episode week Aug 1- Dec 5, 2020, Toronto



# The majority of cases in school aged children are not linked to an outbreak

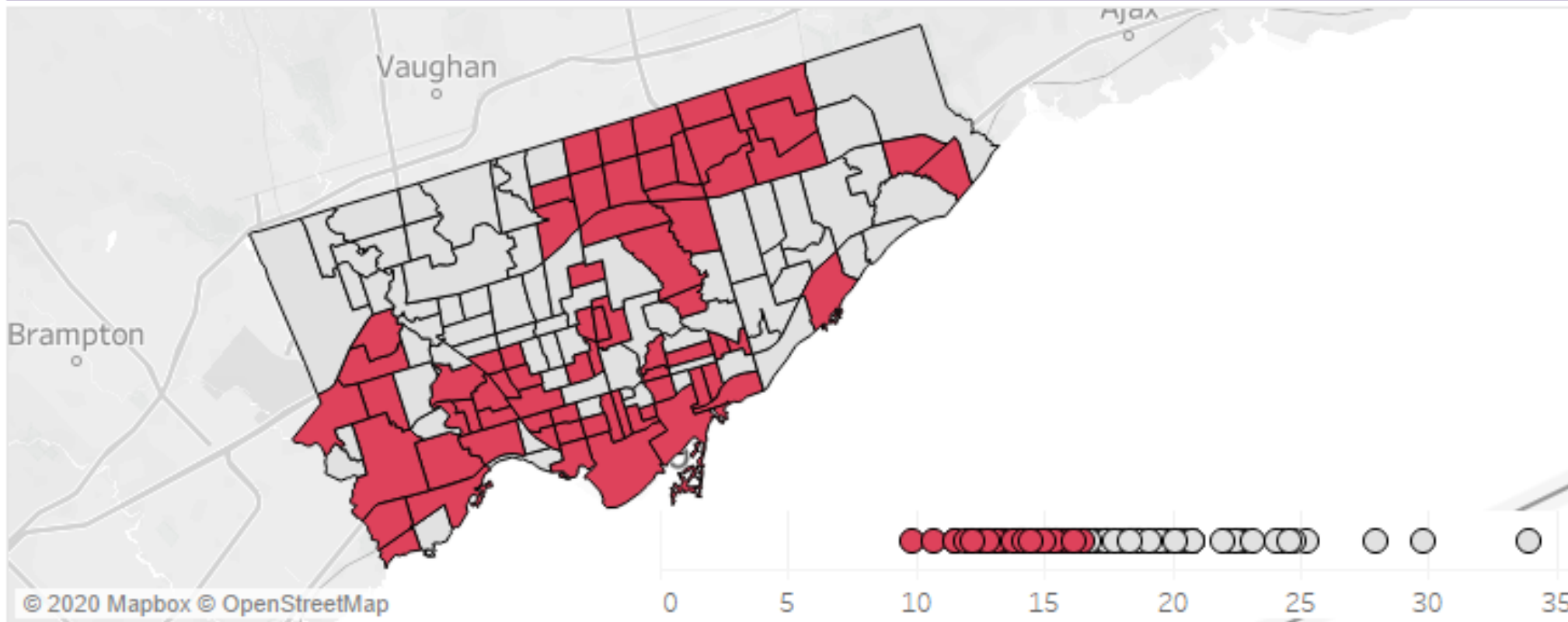
**Figure 1.** COVID-19 cases in school-aged children (4 to 17 years) by outbreak type and week, Toronto



# Testing rates improve in many parts of the City

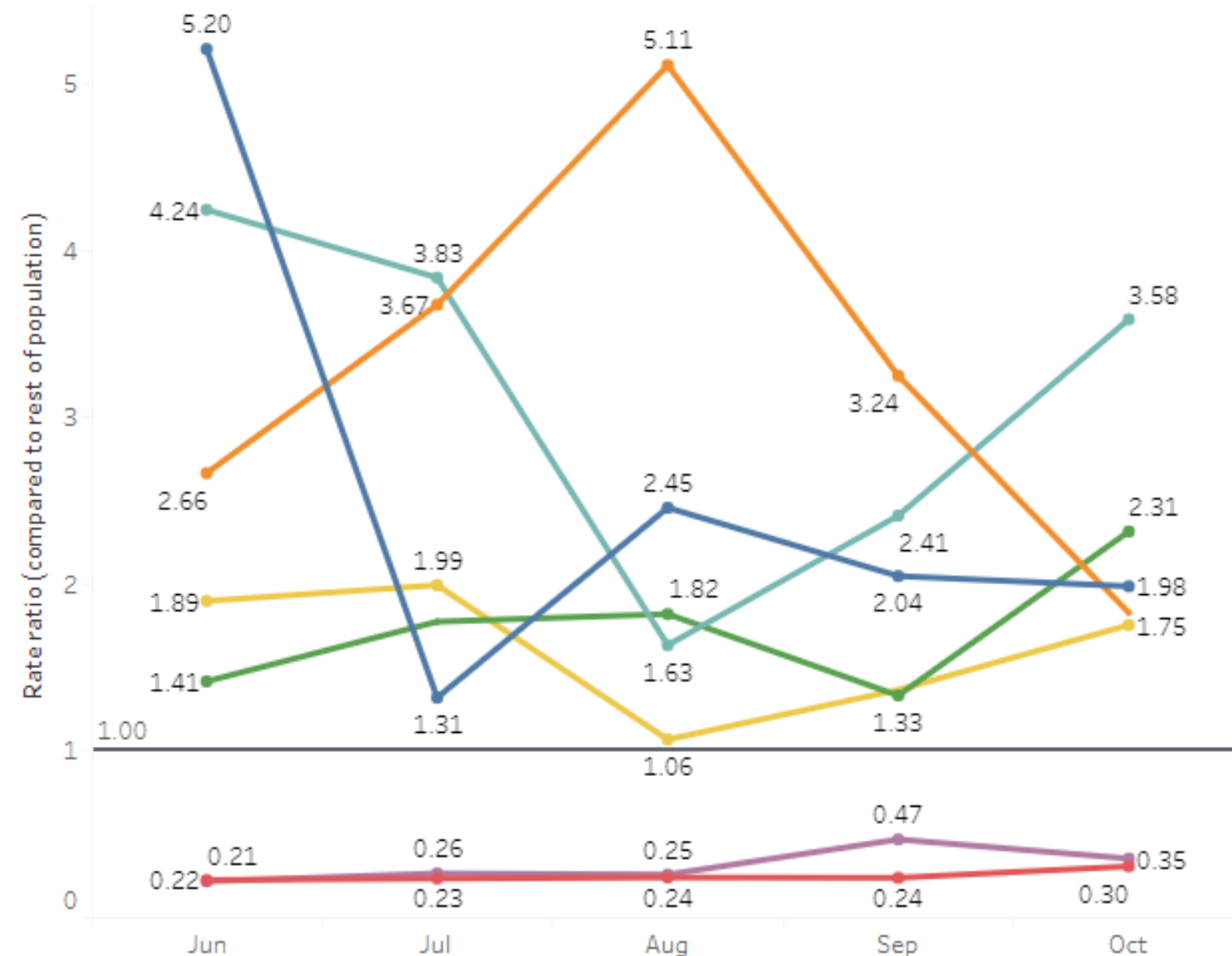
Testing Week: Nov 22-28, 2020

Map: Testing Rate  
Data as of: December 8, 2020



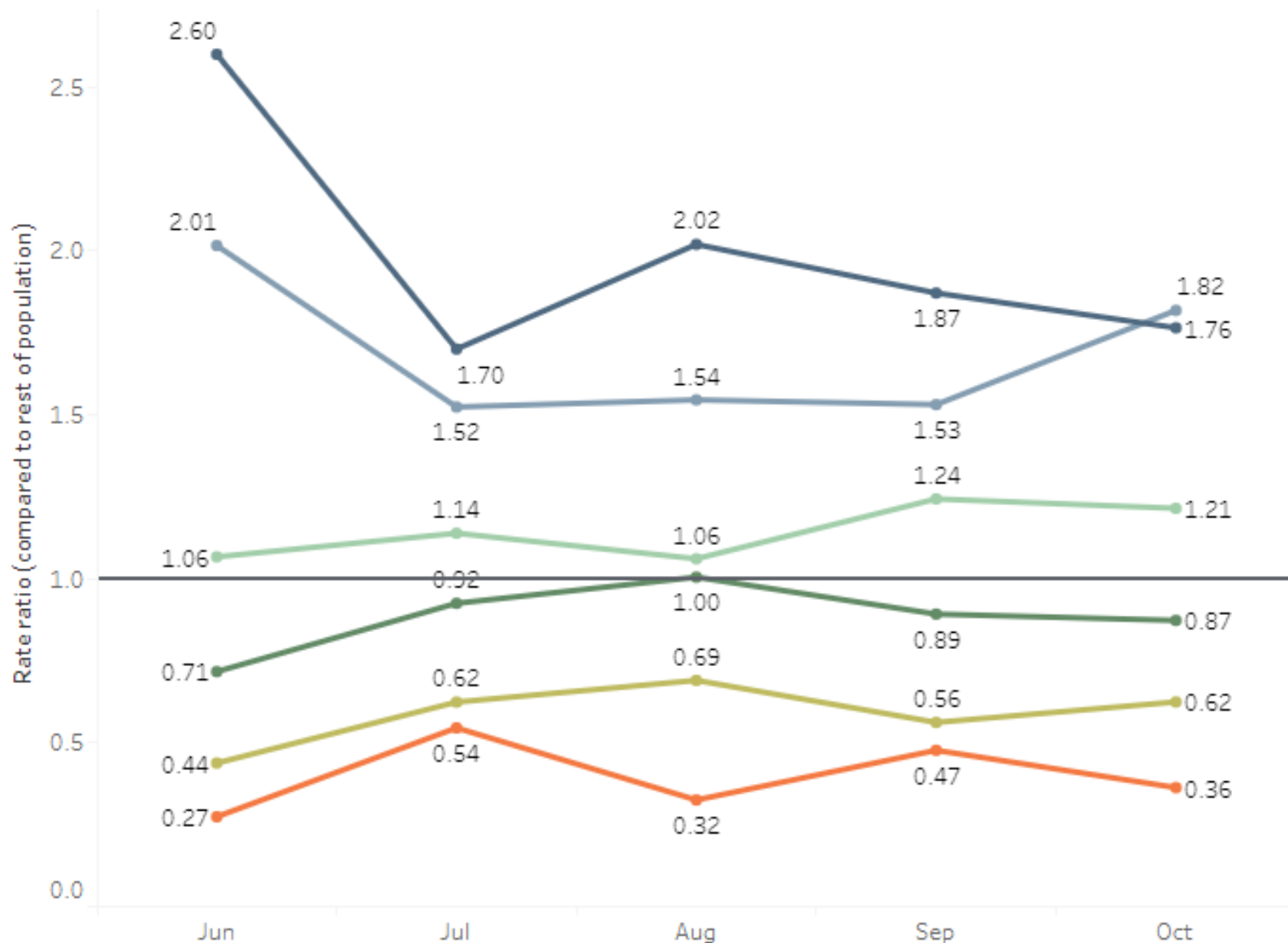
# Racialized people continually over-represented in COVID cases over time; some fluctuations in relative rates

Rate ratio of reported COVID-19 infection among ethno-racial groups compared to the rest of the population in Toronto, by month (N=13,030)



- Arab, Middle Eastern or West Asian
- Black
- East Asian
- Latin American
- South Asian or Indo-Caribbean
- Southeast Asian
- White

# Lower-income people continually over-represented in COVID cases over time; disparity has decreased slightly



Rate ratio of reported COVID-19 infection among household income groups compared to the rest of the population in Toronto, by month (N=7,540)

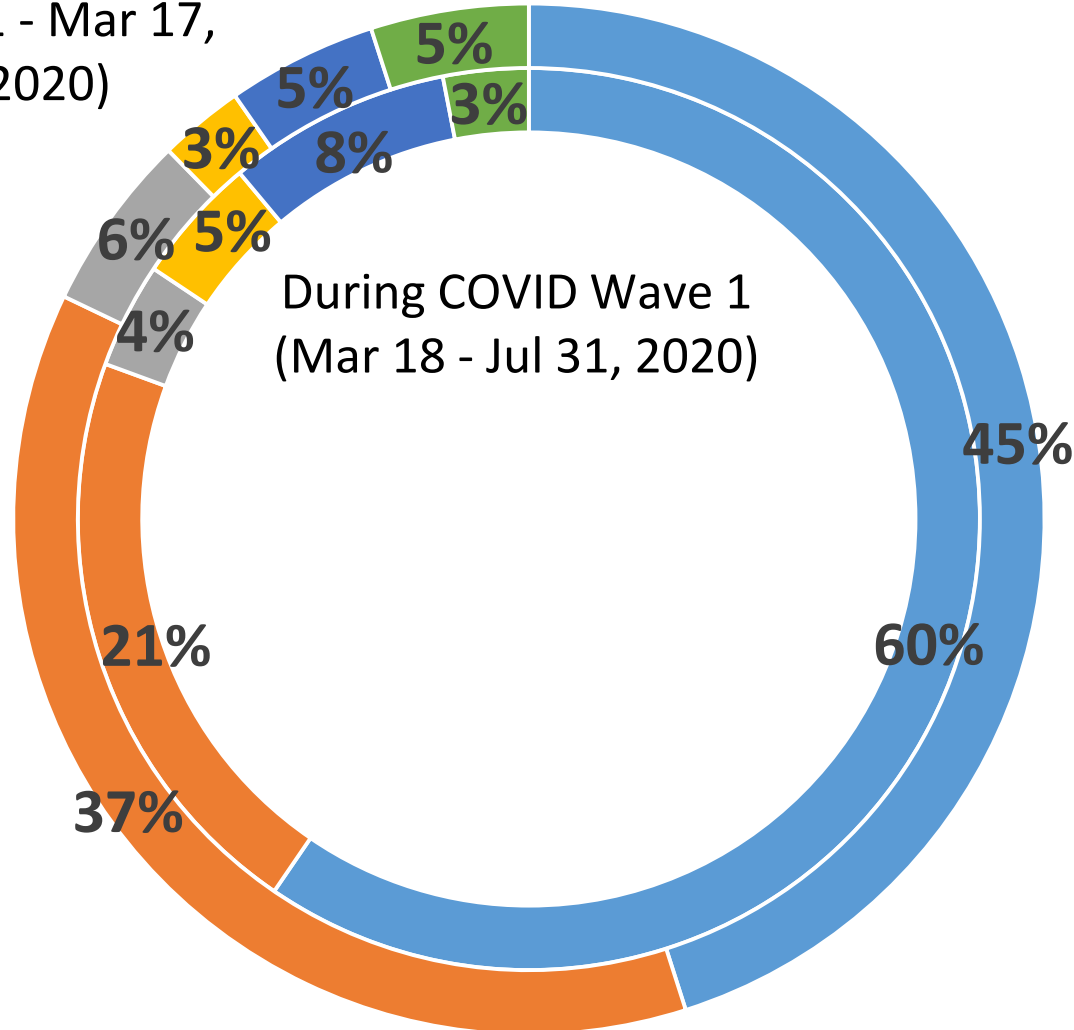
- \$0 - \$29,999
- \$30,000 - \$49,999
- \$50,000 - \$69,999
- \$70,000 - \$99,999
- \$100,000 - \$149,999
- \$150,000 or more

# Additional equity metrics being added to Monitoring Dashboard

- The addition of 'Equity Metrics' to our Monitoring Dashboard will emphasize our commitment to reducing inequities
- High-level metrics will look at disparities by
  1. Neighbourhood
  2. Ethno-racial identity
  3. Income
- Detailed data to drive specific action is available on our neighbourhood and race and income sections of our dashboard
- Next step: consultation with partners from community agencies to inform details of indicators

# Service calls for mental health assessment and treatment more common during Wave 1

Pre-COVID  
(Jan 1 - Mar 17, 2020)



Proportion of 211 Central mental health-related contacts made by Toronto residents, January 1 to July 31, 2020, by area of need

- Mental Health Assessment and Treatment
- Substance Use Disorder Services
- Mental Health Care Facilities
- Mental Health Support Services
- Counselling
- Peer Support

# Mental health services are available to Toronto residents

Toronto residents are reminded that they have access to free mental health services from the safety of their homes. Anyone experiencing anxiety or stress can call 211 to connect with one of 13 mental health service partners for direct phone support.

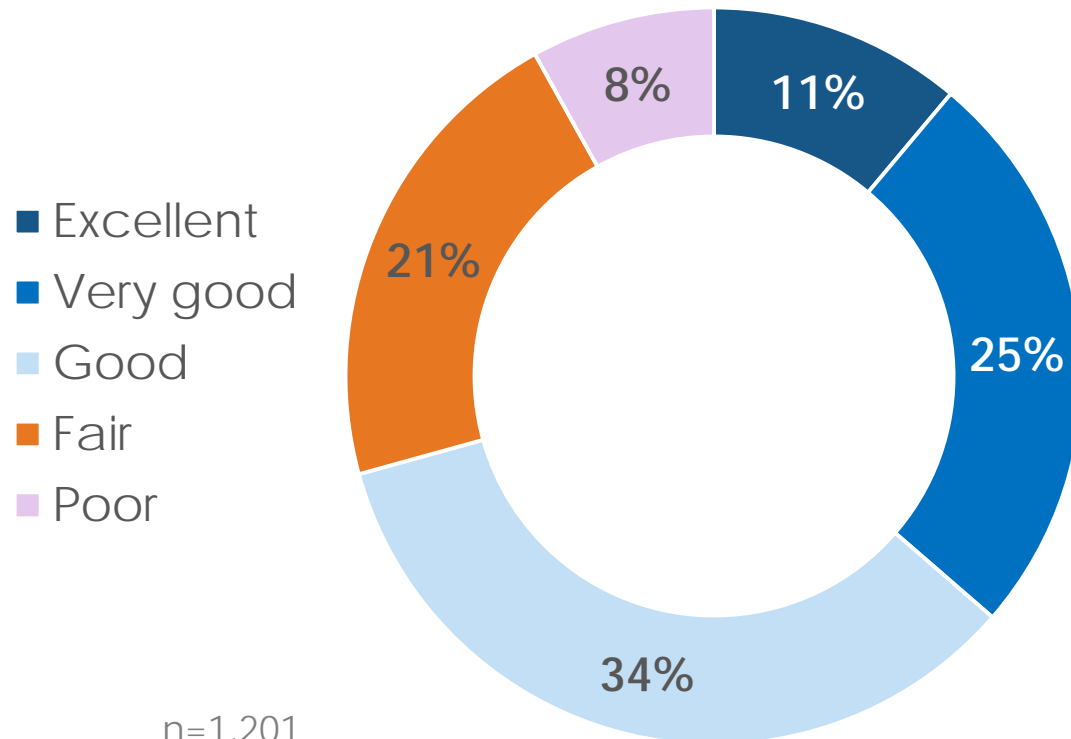
For more mental health service information:

- <http://www.211toronto.ca>
- <https://www.toronto.ca/home/covid-19/covid-19-protect-yourself-others/covid-19-mental-health-resources>



# Far fewer people reporting 'excellent' or 'very good' mental health in October compared to usual

## OVERALL MENTAL HEALTH AND EMOTIONAL WELLBEING OVER PAST TWO WEEKS (END OF OCTOBER)



**36%**  
Excellent/Very good

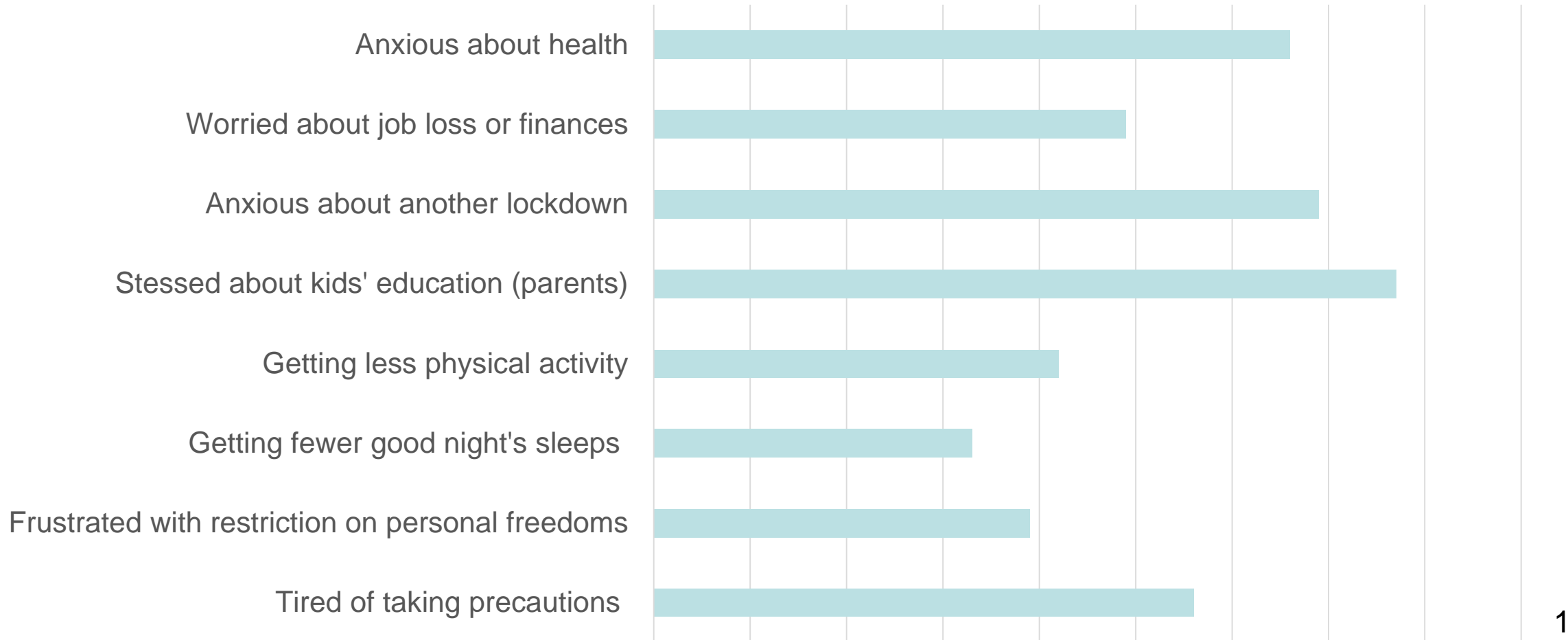
**29%**  
Poor/Fair

This is usually  
over **70%**

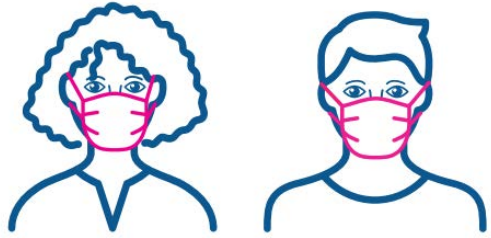
# Many factors contributing to decreased emotional well-being in October

Percent of Torontonians who were:

0% 10% 20% 30% 40% 50% 60% 70% 80% 90%



# The majority of people are taking precautions and agree with public health measures



97%

Are always wearing a mask indoors in public places (at minimum)



90%

Agree the City needs to take 'whatever measures necessary' to control the spread of COVID-19



80%

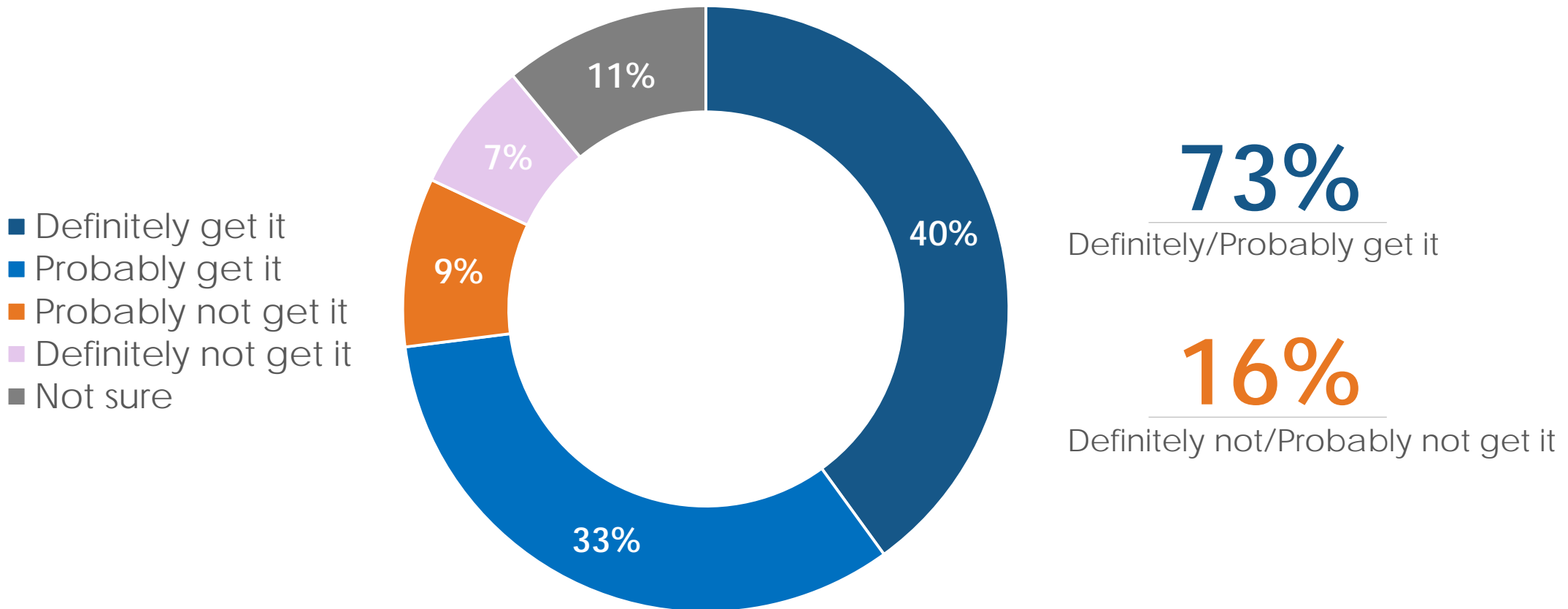
Supported a second lockdown if the numbers continued to rise (*asked at the end of October*)



However, **42%** agree that strict public health measures like lockdowns do more harm than good, and **39%** say businesses should be allowed to operate as they choose

# Most Torontonians plan on getting vaccinated for COVID-19

## INTENTION TO GET COVID-19 VACCINE ONCE IT'S ROLLED OUT



n=1,201

# Preparing for COVID-19 Vaccine

- December 9, 2020, Health Canada approved the first COVID-19 vaccine for use in Canada
- 249,000 doses of the vaccine are expected to be available by the end of the year
- Early delivery of vaccine to be administered to specific sub-populations identified by province - likely spring for wider population access.
- Will work with community organizations to create a community-centric vaccination campaign – goal to ensure diverse populations are aware of, and engaged in, the COVID-19 immunization planning.

- The BOH requested the MOH to publicly share details of workplace outbreaks while respecting privacy requirements
- TPH has developed a process to share outbreak information related to community and workplace settings. Dashboard launch expected in the coming shortly
- Where there is an established health risk to the public, TPH will share specific information about the outbreak in the workplace in order to manage the risk

# Action and Advocacy for healthier workplaces

In addition, Toronto Public Health has been in frequent meetings with the Ministry of Labour, Training and Skills Development, to take action and advocate for numerous changes in practice and policy that would support healthier workplaces in the COVID-19 response and beyond.

Examples include:

- Better support for temporary workers to follow public health measure (i.e., masking, distancing, screening, sick leave policy)
- Strengthen recently implemented--proactive inspections by working with operators to ensure high quality infection control and prevention measures
- Facilitating vaccination for workers who contribute to essential systems

# Report Recommendations





# Report Recommends

1. Request the Ministry of Health to provide resources and funding to prepare for Toronto's COVID-19 immunization plan
2. Request the Provincial Government to provide resources and funding to support the community engagement and to support community groups/stakeholders to build knowledge and support for the COVID-19 immunization plan.
3. Request the Ministry of Health to ensure that the COVID-19 Vaccine Information System is a comprehensive and practical system that is simple to use.

4. Request the Provincial Government to lead data collection on how people are managing the challenges of the COVID-19 pandemic, ensure representation and encompassing data at the public health unit level.
5. Request the Medical Officer of Health to identify trends from the Toronto Public Health COVID-19 Community Survey Results and share these findings with stakeholders through community groups and Toronto's 13 COVID-19 Community Cluster tables.

6. Direct that the Toronto Public Health COVID-19 Community Survey Results be forwarded to the Ministry of Health.
  
7. Request the Medical Officer of Health to update Attachment 2, Indirect Impact of COVID-19 on Mental Health/Well-Being, with data from the remainder of 2020 and report back to the Board of Health.