

Toronto Preservation Board

August 27, 2020





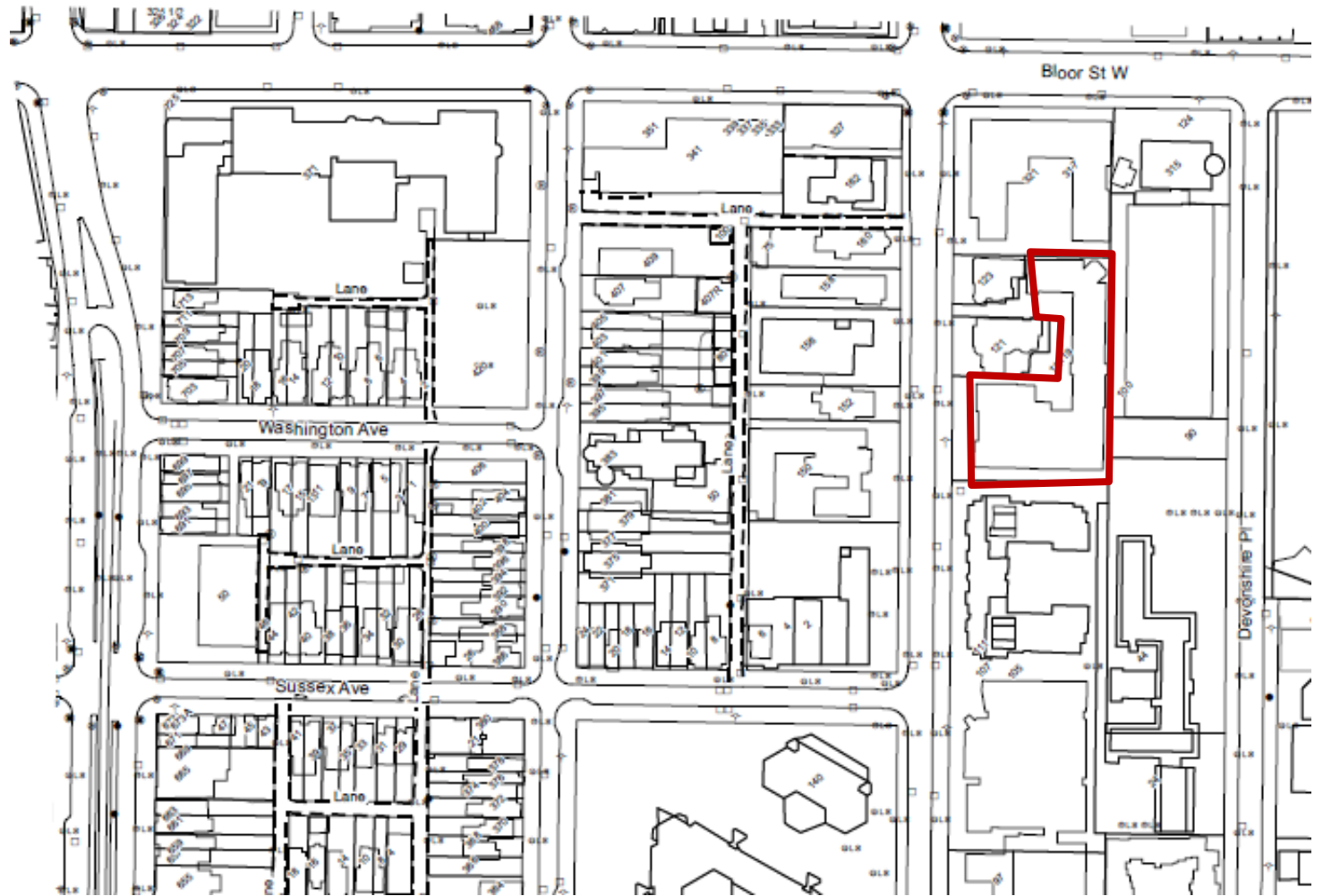
PB16.9

**Intention to Designate under Part IV,
Section 29 of the Ontario Heritage Act,
Alterations to Designated Heritage
Properties and Authority to Enter into
Heritage Easement Agreements
– 117 St George Street**

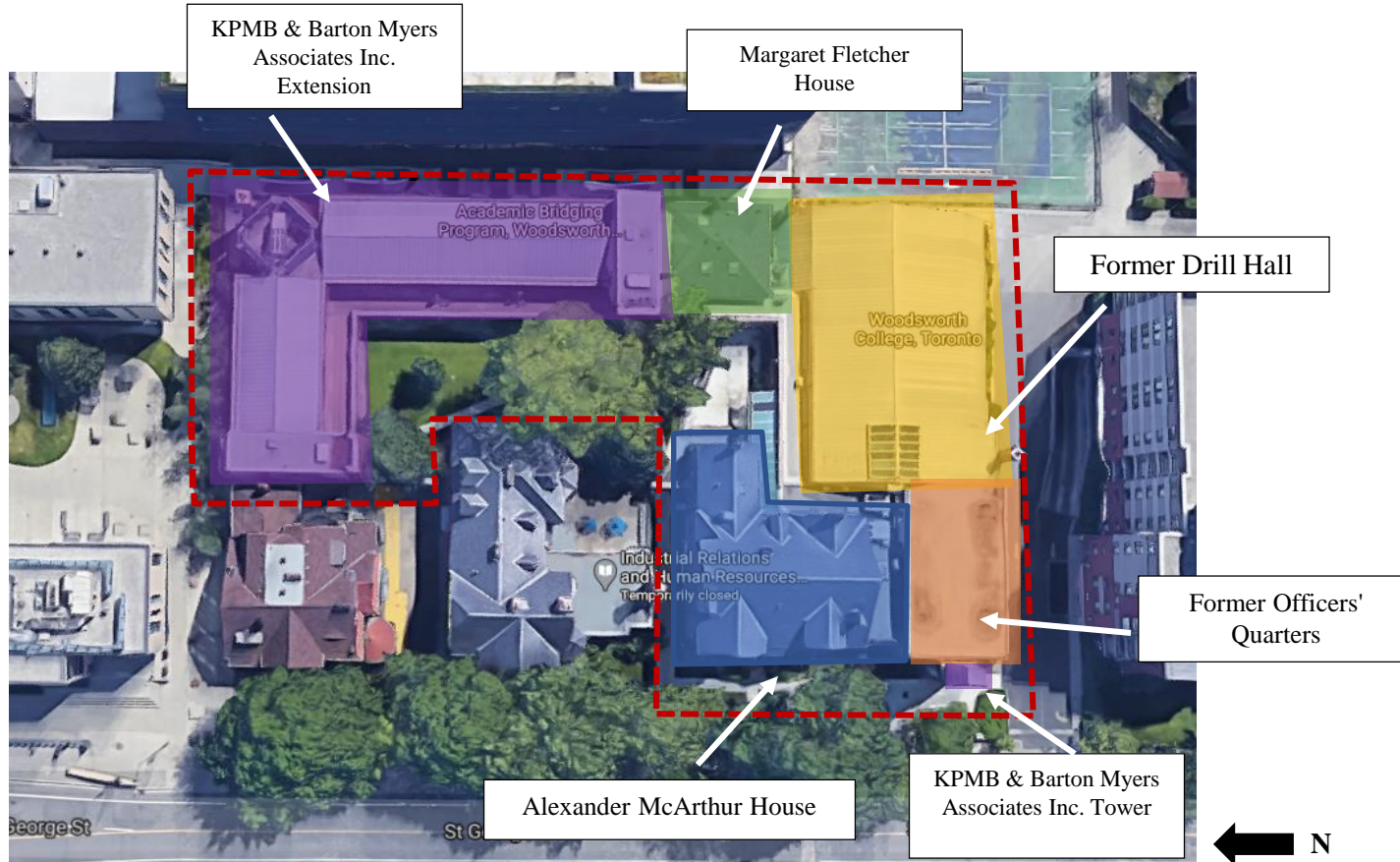
PB16.9

117 St George Street

City of Toronto Property Index
Map, annotated to show the
location of 117 St George Street



PB16.9 117 St George Street



Aerial view of the buildings comprising Woodsworth College at 117 St George Street, annotated in red to show the site

PB16.9 117 St George Street



Detail of the Alexander McArthur House (left) and the KPMB & Barton Myers Associates Inc. tower addition (right)

PB16.9
117 St George Street



Detail of the former Drill Hall



Detail of the former officers' quarters

PB16.9
117 St George Street



Detail of the L-shaped KPMB & Barton Myers Associates Inc. addition at the rear and the Peter F. Bronfman Courtyard looking northeast



Detail of the L-shaped KPMB & Barton Myers Associates Inc. addition at the rear and the Peter F. Bronfman Courtyard looking south

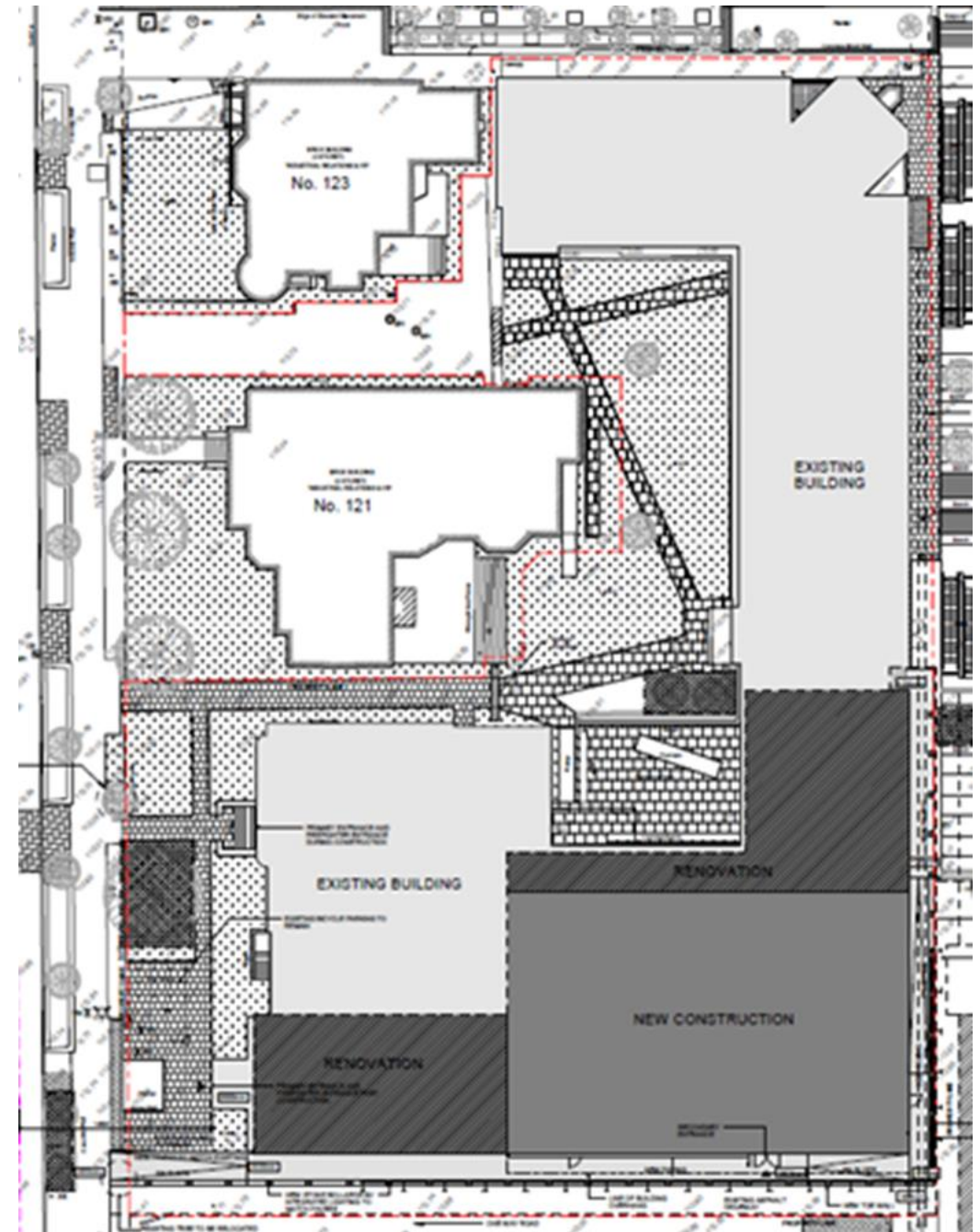
PB16.9
117 St George Street



117 St George Street

PB16.9 117 St George Street

Drawings showing location of new construction and renovation at the site



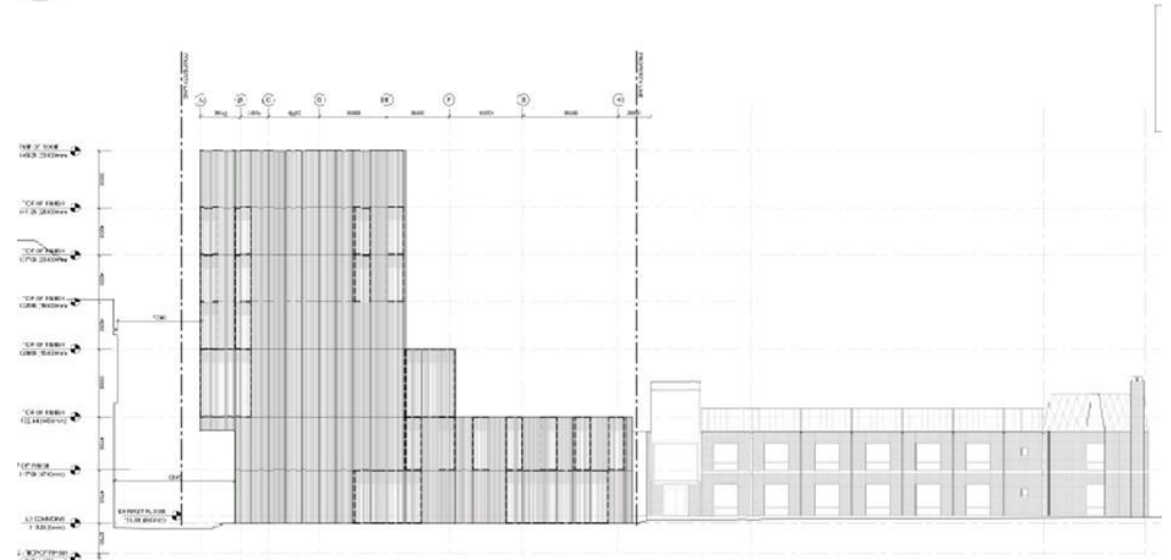
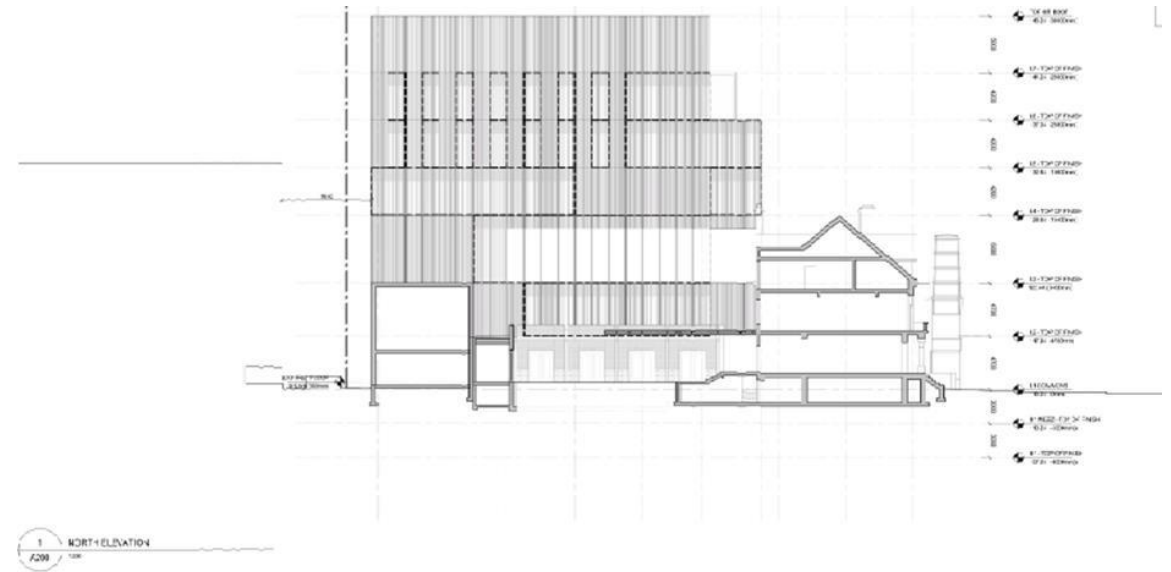
PB16.9
117 St George Street



The project will be sited at the south east portion of the site and would remove the modified Drill Hall

PB16.9 117 St George Street

Elevations- North elevation is upper diagram and shows the setback of massing from St George Street frontage. Massing also setback at south of site preserving existing rear courtyard; East/rear elevation is lower diagram



PB16.9 117 St George Street

Rendering- Looking northeast at St George frontage. The development is setback more than 20 metres from St George Street frontage lending visual prominence to the existing scale and built form.

