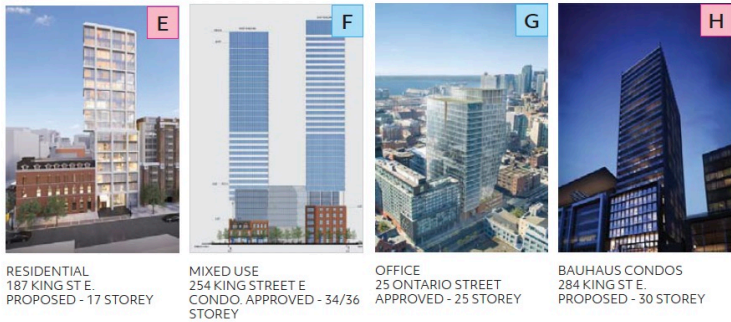
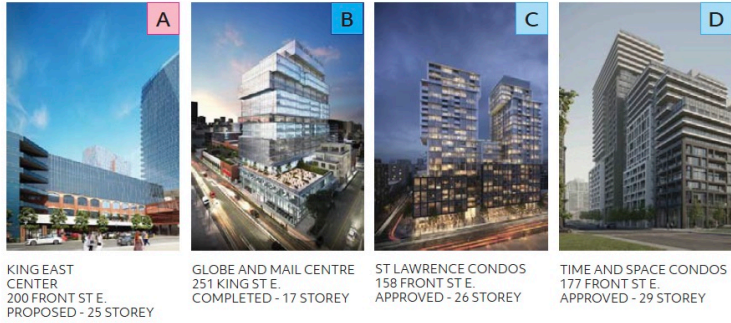


33 Sherbourne St & 176-178 Front St E

Presentation to the
Toronto Preservation Board
Thursday, 27th of August 2020
Item PB 16.8



■ Completed
 ■ Approved
 ■ Proposed



Context area

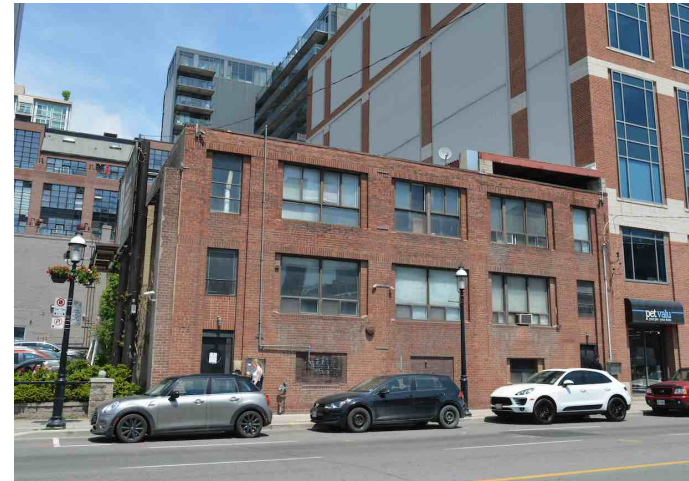


26-storey Mixed-Use
St-Lawrence Condominiums
(Under Construction)

29-storey Mixed-Use
Time and Space Condominiums
(Under Construction)



33 Sherbourne St



176-178 Front St E

Archival / Existing



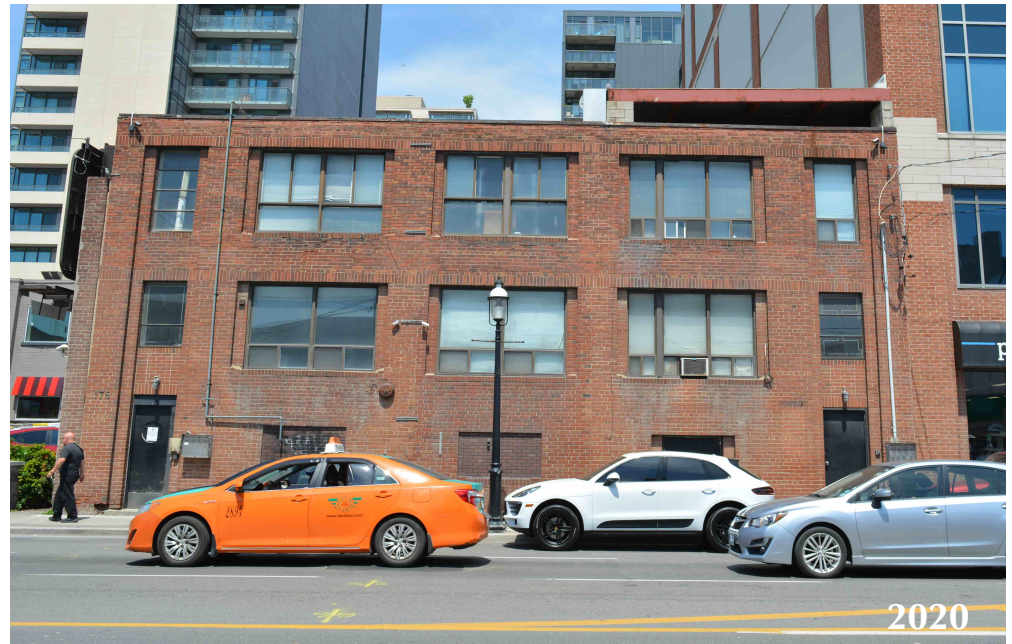
c1970s



c1970s



2020



2020

Proposed development



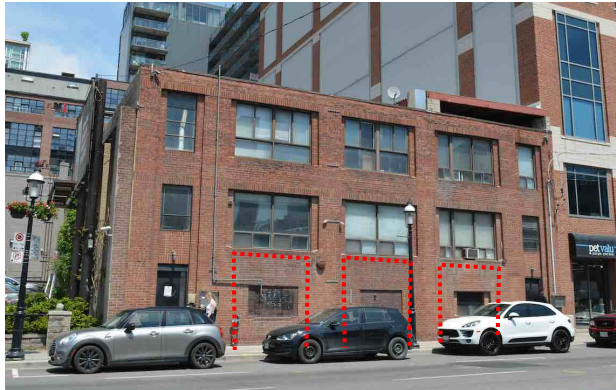
View from Sherbourne Street and Front Street East corner

Proposed development



View from Sherbourne Street

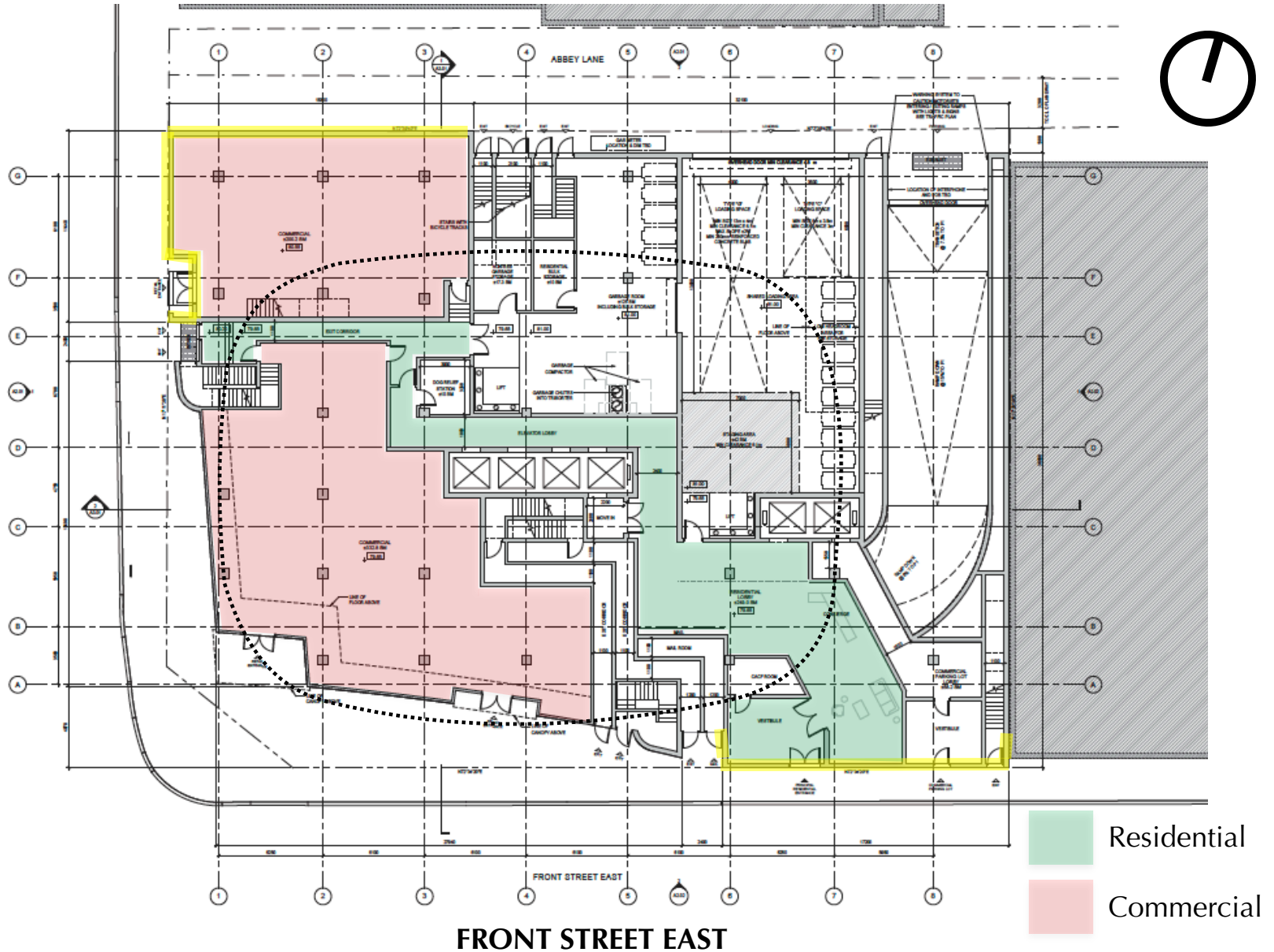
Proposed development



View from Front Street East

Proposed Ground Floor Plan

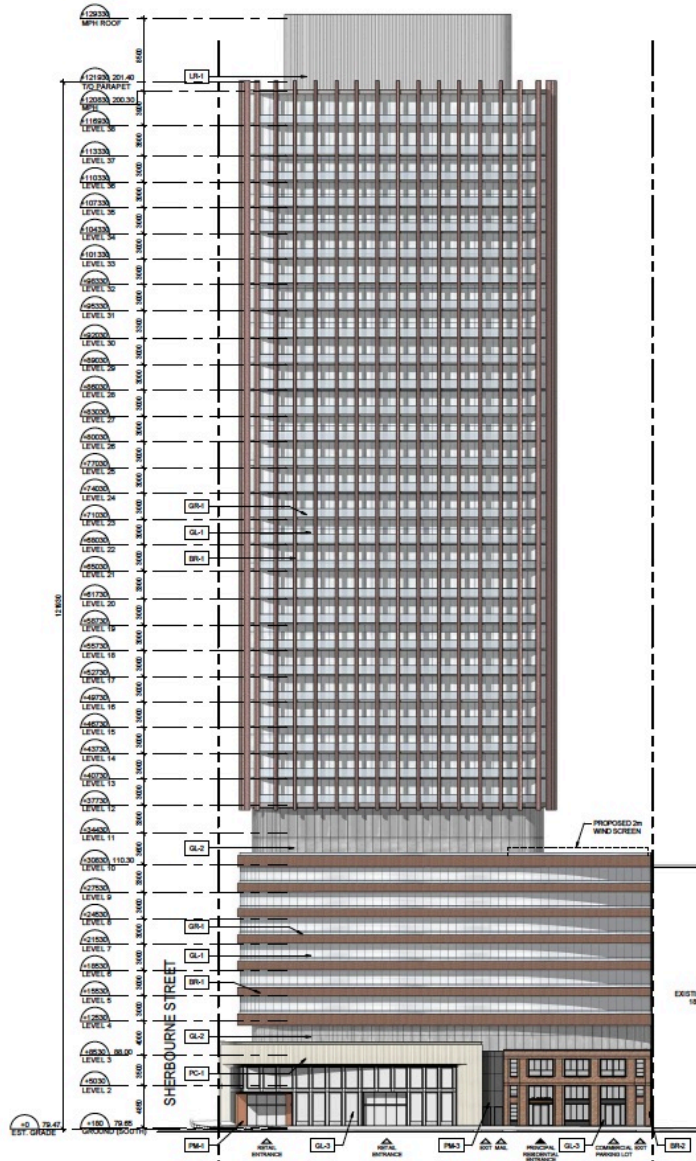
SHERBOURNE STREET



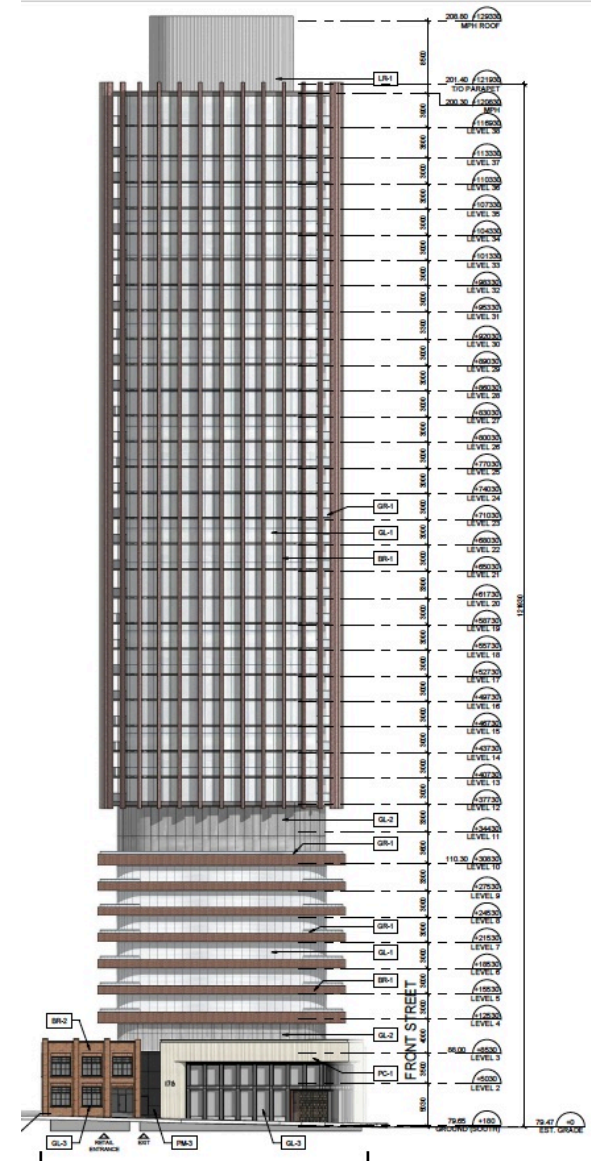
FRONT STREET EAST

- Residential
- Commercial

Proposed Elevations



Front Street East



Sherbourne Street