

MAPS AND PHOTOGRAPHS
10 and 10A DAWES ROAD

PUBLIC APPENDIX B



Figure 1. 1860 *Tremaine's Map of the County of York*, annotated to show the location of Danforth Avenue (then Don and Danforth Road) and Dawes Road where inns and a store were located ([Nathan Ng's Historical Maps of Toronto](#))

MAPS AND PHOTOGRAPHS
10 and 10A DAWES ROAD

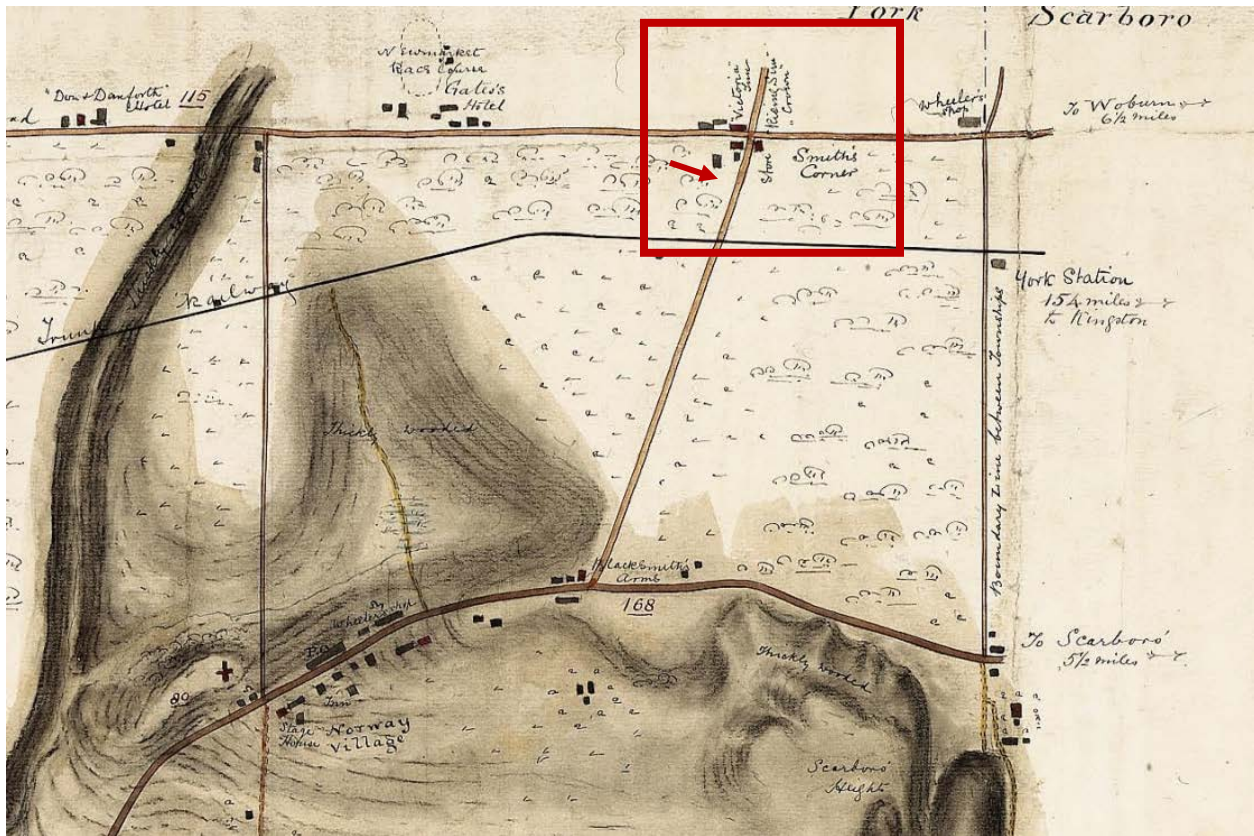


Figure 2. 1868 Gehle, Fawkes & Hassard: Reconnaissance Sketches of Toronto Area, annotated to show the location of Smith's Corner at Danforth Avenue (then Don and Danforth Road) and Daves Road ([Nathan Ng's Historical Maps of Toronto](#))

MAPS AND PHOTOGRAPHS
10 and 10A DAWES ROAD

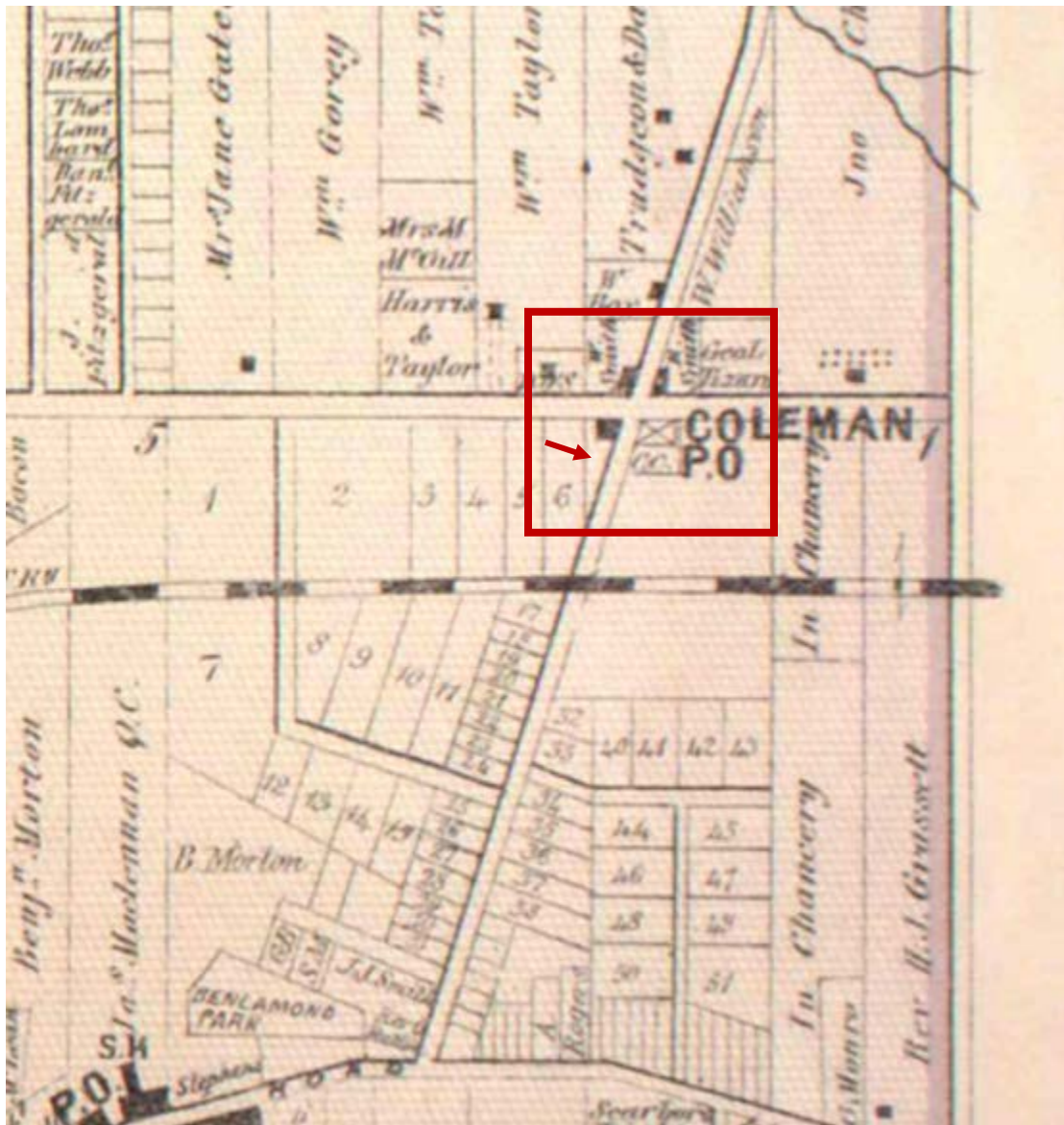


Figure 3. 1878 Illustrated Historical Atlas of the County of York, annotated to show the location of Danforth Avenue and Dawes Road, then known as the postal village of Coleman ([Nathan Ng's Historical Maps of Toronto](#))

MAPS AND PHOTOGRAPHS
10 and 10A DAWES ROAD

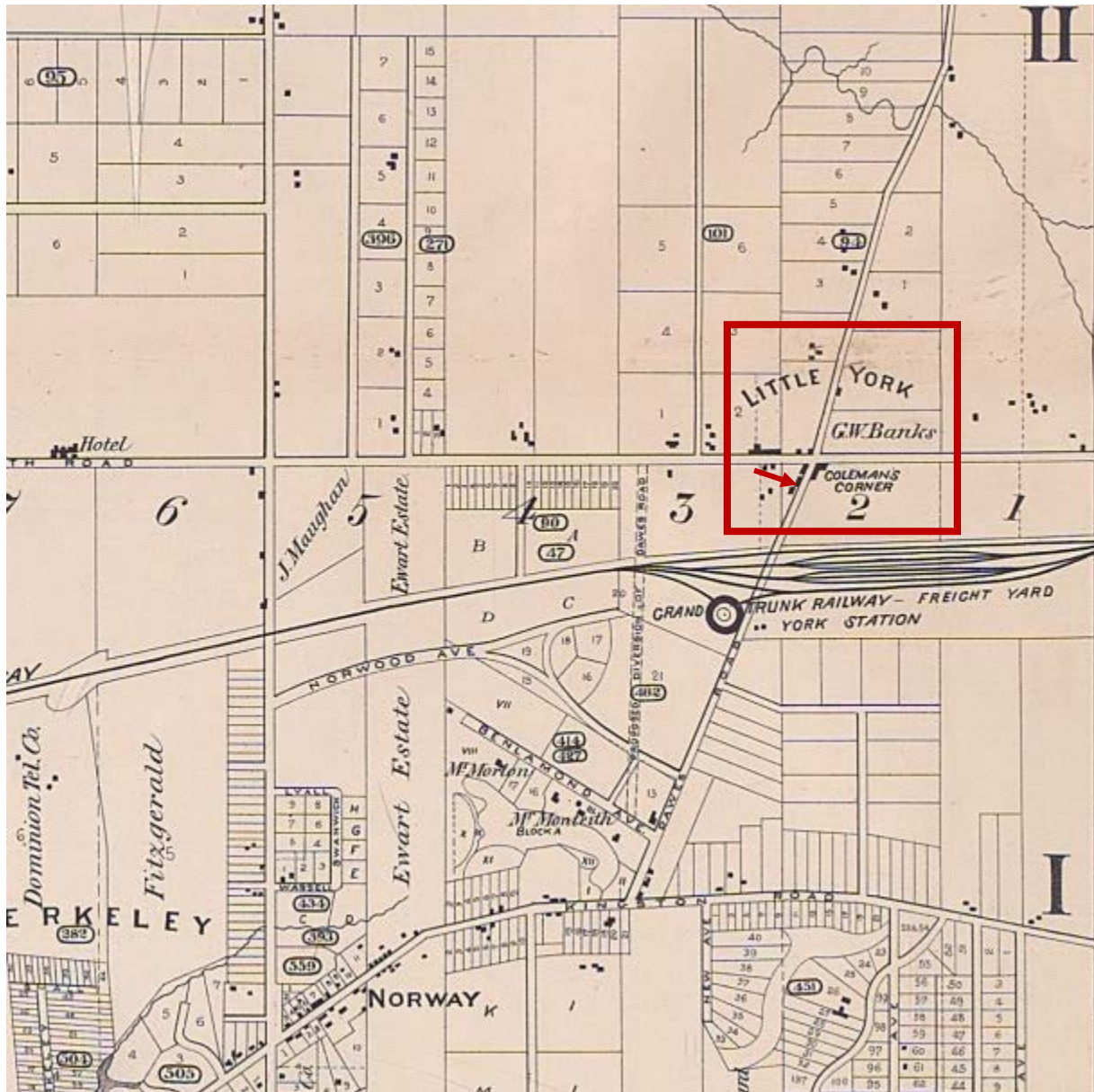


Figure 4.1884 Goad's Atlas Map, annotated to show that Danforth and Dawes was known as both Little York and Coleman's Corner ([1884 Goad's Fire Insurance Map](#))

MAPS AND PHOTOGRAPHS

10 and 10A DAWES ROAD



Figure 5. 1906 historical photograph showing York Railway Station (GTR), Main St, east side, south of Danforth Avenue ([Toronto Public Library](#))

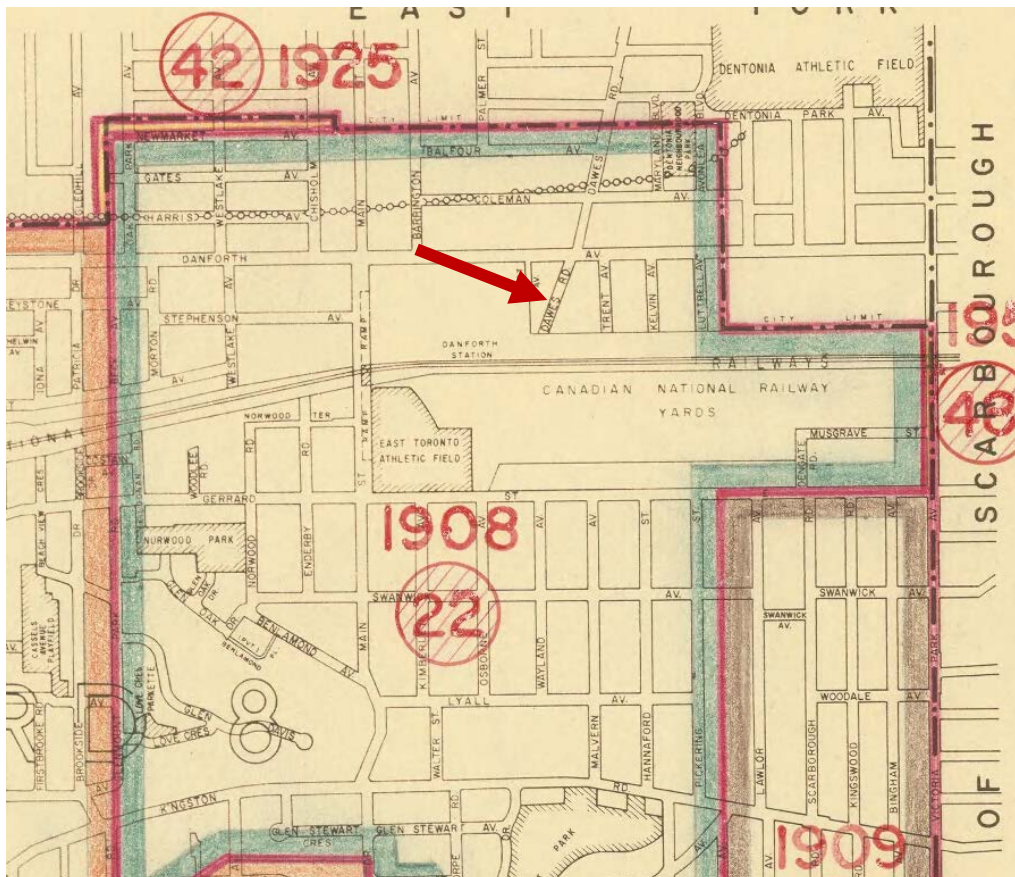


Figure 6. 1967 Map of the annexation date of various city of Toronto neighbourhoods and geographic area, annotated to show the location of the subject properties ([Nathan Ng's Historical Maps of Toronto](#))

MAPS AND PHOTOGRAPHS
10 and 10A DAWES ROAD

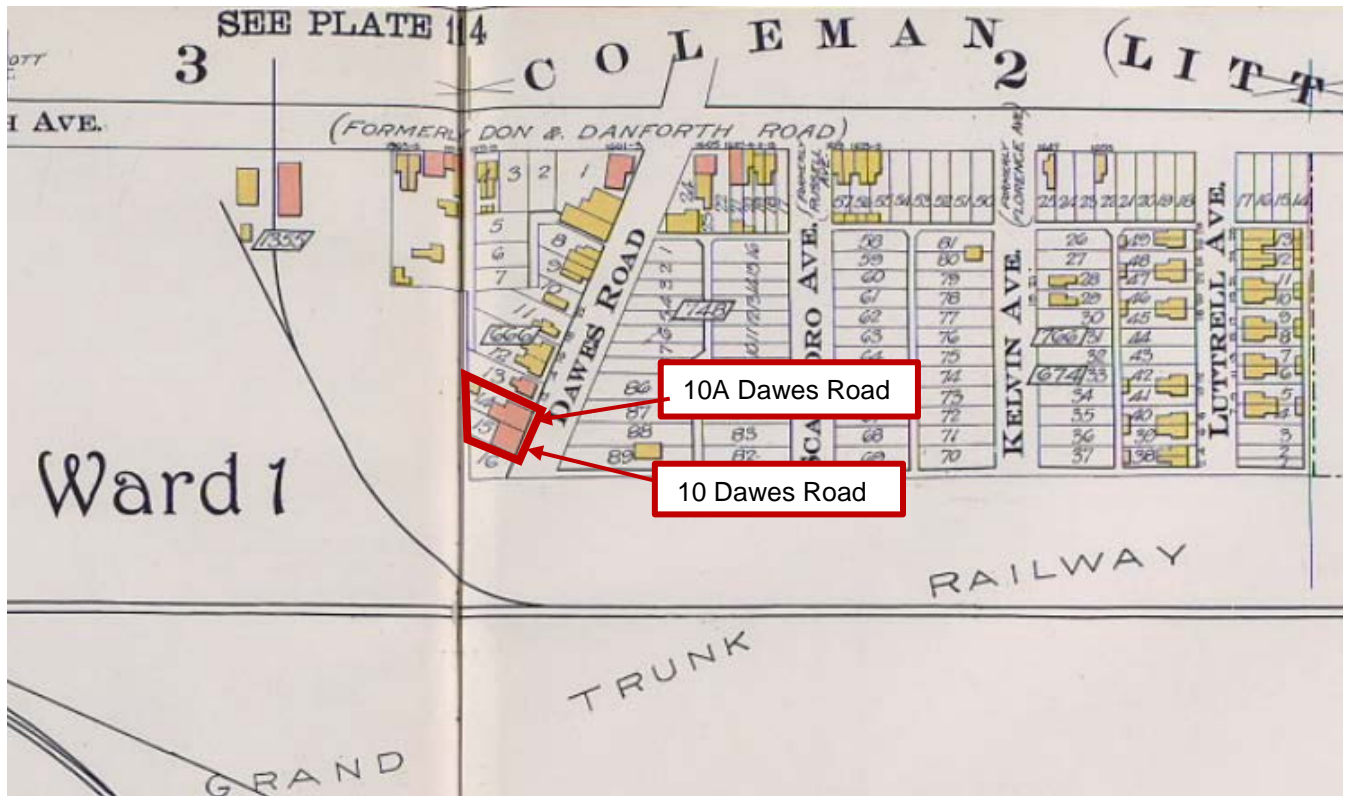


Figure 7. 1910 Goad's Atlas Map, annotated to show the location of present-day 10 and 10A Dawes Road (which was originally known as 10 Dawes Road) ([1910 Goad's Fire Insurance Map](#))

MAPS AND PHOTOGRAPHS
10 and 10A DAWES ROAD



Figure 8. 1903 historical photograph showing the Empringham Hotel prior to renovations ([Toronto Public Library](#))



Figure 9. 1914 historical photograph showing the new Empringham Hotel, annotated to show the grain elevator at 10 Dawes Road in the background ([Toronto Public Library](#))

MAPS AND PHOTOGRAPHS

10 and 10A DAWES ROAD



Figure 10. "1889" historical photograph showing York Stations and present-day 10A Dawes Road in the background. The dating of the photograph is likely incorrect ([Toronto Public Library](#))

MAPS AND PHOTOGRAPHS
10 and 10A DAWES ROAD



Figure 11. Detail of the principal (east) elevations of 10 (left) and 10A Dawes Road (right) (Heritage Planning, 2021)



Figure 12. Detail of the principal (east) elevation of 10A Dawes Road (Heritage Planning, 2021)

MAPS AND PHOTOGRAPHS

10 and 10A DAWES ROAD

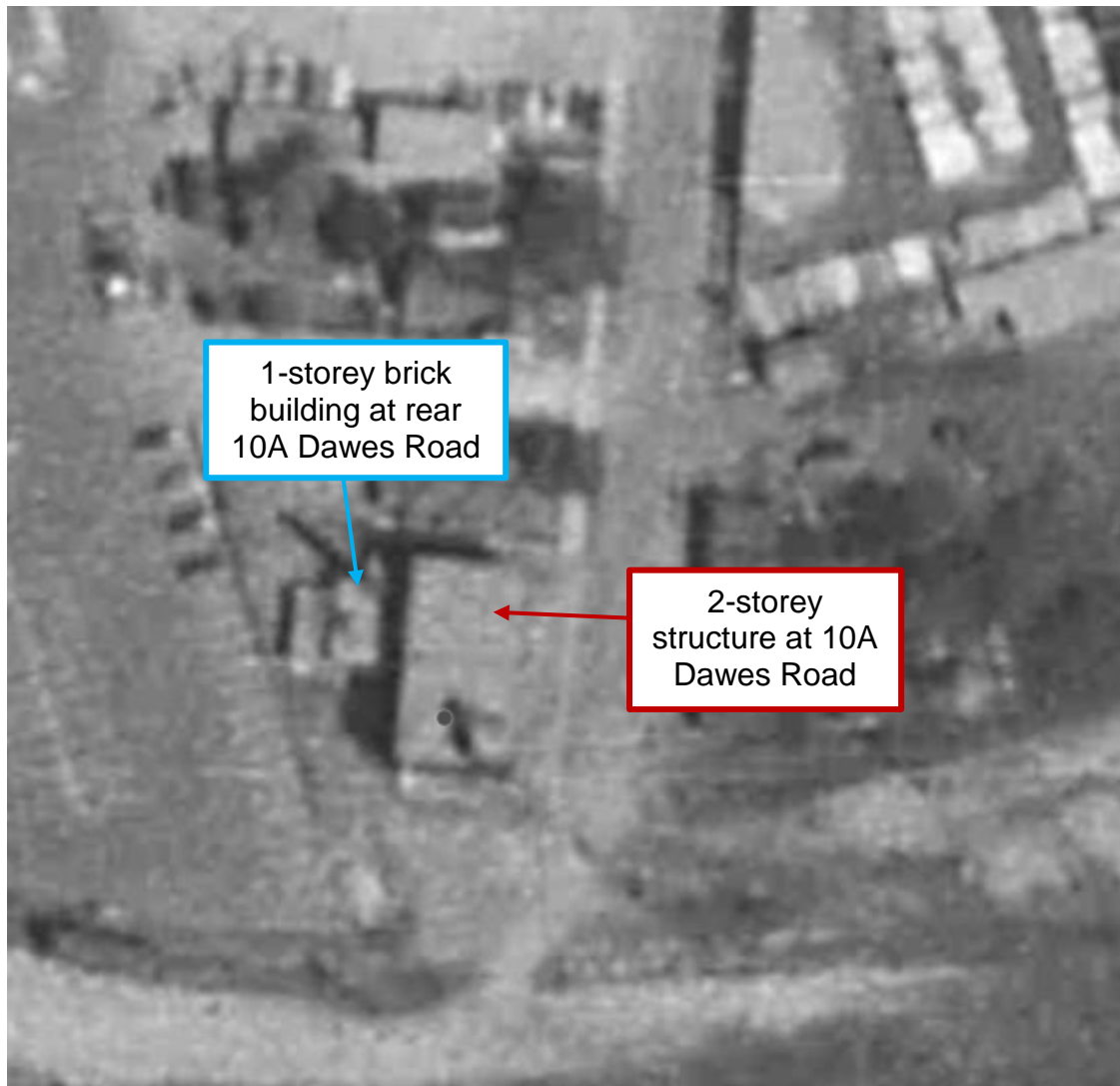


Figure 13. 1954 Aerial photograph, annotated to show the different structures at 10A Dawes Road (iView)

MAPS AND PHOTOGRAPHS
10 and 10A DAWES ROAD



Figure 14. Detail of the one-storey brick building at the rear of 10A Dawes Road (Heritage Planning, 2021)



Figure 15. Detail of the ornamented parapet and inaid rectangular panel in the principal (east) elevation of 10A Dawes Road (Heritage Planning, 2021)

MAPS AND PHOTOGRAPHS

10 and 10A DAWES ROAD



Figure 16. Detail of the ornamented parapet in the side (north) elevation of the rear one-storey brick building at 10A Dawes Road (Heritage Planning, 2021)



Figure 17. Detail of the principal (east) elevation of 10 Dawes Road (Heritage Planning, 2021)

MAPS AND PHOTOGRAPHS
10 and 10A DAWES ROAD



Figure 18. Detail of the southeast corner of 10 Dawes Road (Heritage Planning, 2021)



Figure 19. Detail of the one-storey concrete block addition and a one-storey metal clad addition at the rear of 10 Dawes Road (Heritage Planning, 2021)

MAPS AND PHOTOGRAPHS

10 and 10A DAWES ROAD



Figure 20. 1924 Goad's Atlas Map, annotated to show the location of the subject properties and the railway spur ([1924 Goad's Fire Insurance Map](#))

MAPS AND PHOTOGRAPHS
10 and 10A DAWES ROAD



Figure 21. Detail of the ground floor of 10 Dawes Road illustrating the timber columns (ERA, 2018)

MAPS AND PHOTOGRAPHS
10 and 10A DAWES ROAD



Figure 22. Detail of the space within a grain bin/silo. The stairs and door are later alterations (ERA, 2018)



Figure 23. Details of the upper storeys at 10 Dawes Road where the 9 wooden-cribbed grain silos are (ERA, 2018)

MAPS AND PHOTOGRAPHS
10 and 10A DAWES ROAD



Figure 24. Detail of the original wheel and rubber conveyor belt still housed in the headhouse (ERA, 2018)



Figure 25. Sorter piece within the distributor (left), a remnant mill wheel (middle), and the scoops and belt for the elevator leg (right) (ERA, 2018)

MAPS AND PHOTOGRAPHS
10 and 10A DAWES ROAD



Figure 26. Mill infrastructure (left and middle) and the original scale used to measure deliveries (right) (ERA, 2018)



Figure 27. Example of a grain elevator, Alberta Wheat Pool Grain Elevator, Big Valley, Alberta (1960) (Heritage Planning, 2013)

MAPS AND PHOTOGRAPHS
10 and 10A DAWES ROAD

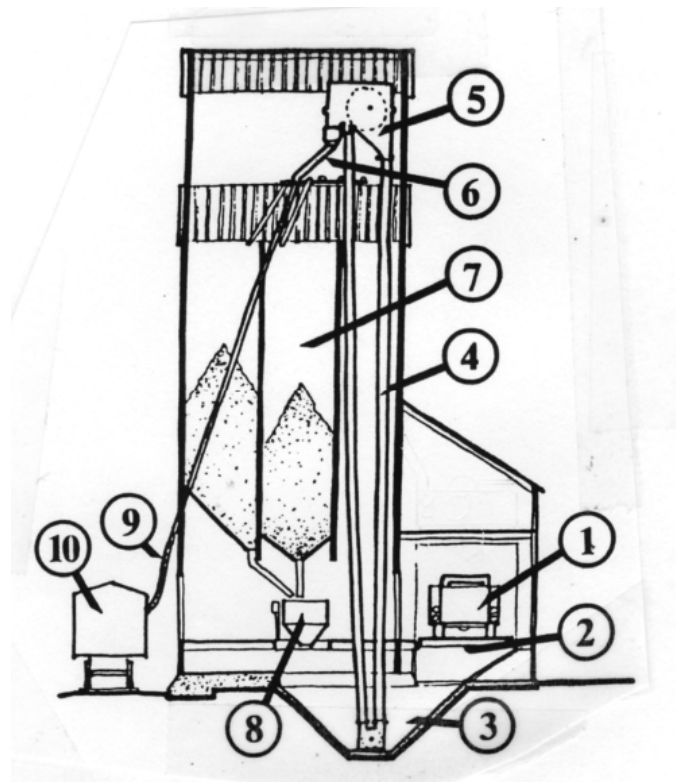


Figure 28. Wooden-crib grain elevator diagram as referenced in Section 3 ([Dr John Everitt, "A History of Grain Elevator's in Manitoba"](#))



Figure 29. Pontypool Grain Elevator in Kawartha Lakes (early-twentieth century) ([Kawartha Lakes Public Library](#))

MAPS AND PHOTOGRAPHS
10 and 10A DAWES ROAD

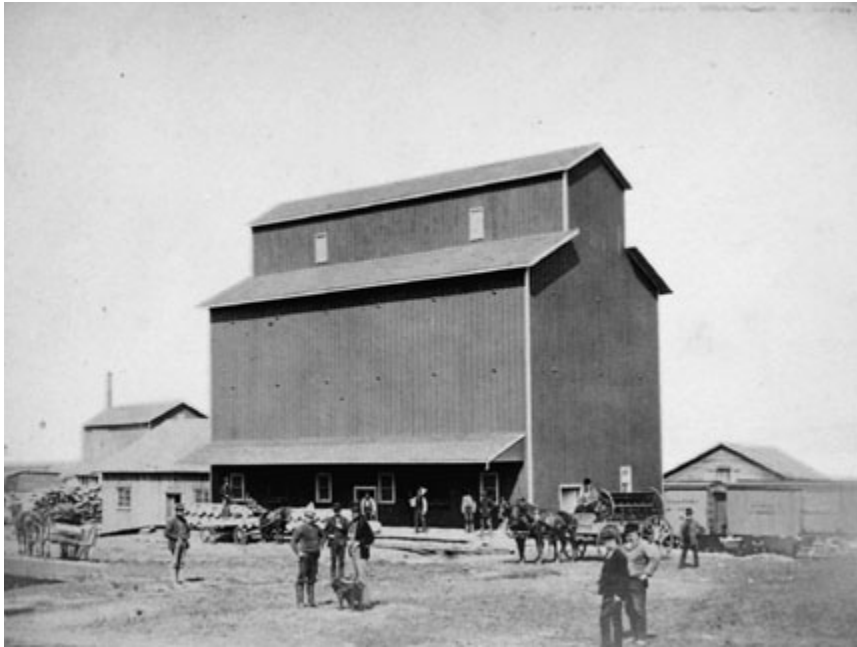


Figure 30. 1875 historic photograph of George Currie's Port Perry grain elevator (1874). It was extended to the north and south during the twentieth century ([Port Perry/Scugog Township Heritage Gallery](#))