

WILLIAM BAKER

Toronto pA

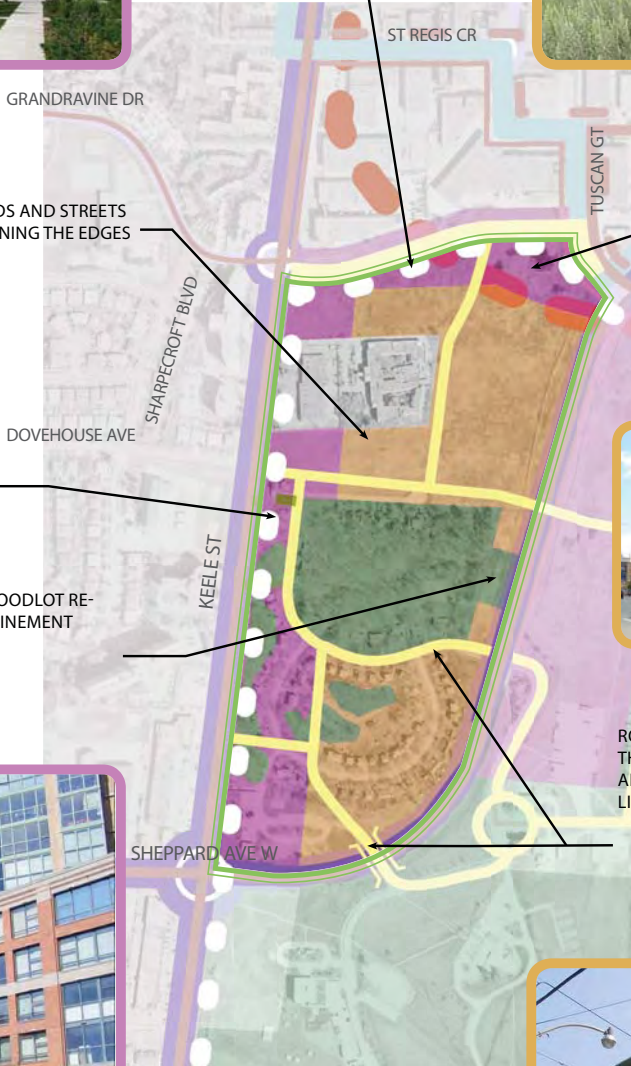
08 DEC 08



TRANSIT CONNECTS WILLIAM BAKER TO THE NEW SUBWAY STATION



MIXED USE AREAS PROVIDE A TRANSITION FROM EMPLOYMENT AREA TO THE NORTH TO THE PROPOSED RESIDENTIAL NEIGHBOURHOOD DIRECTLY SOUTH



APARTMENT NEIGHBOURHOODS AND STREETS FRAME THE WOODLOT BY DEFINING THE EDGES

MIXED USE AREAS ALONG KEELE ST ALLOWS FOR RESIDENTIAL AND EMPLOYMENT USES, AND INTENSIFICATION ON AN AVENUE LOCATED NEAR THE PROPOSED SUBWAY STATION

EASTERN EDGE OF WOODLOT REQUIRES FURTHER REFINEMENT



ROADS PROVIDE CONNECTIONS THROUGH THE NEIGHBOURHOOD BETWEEN KEELE ST AND SHEPPARD AVE AND ENABLE DIRECT LINK TO NATIONAL PARK



EXST. DENSITY

140 R+J / HA

DENSITY

550 R+J / HA

R= RESIDENTS J=JOBS

DISTRIBUTION

50% R - 50% J