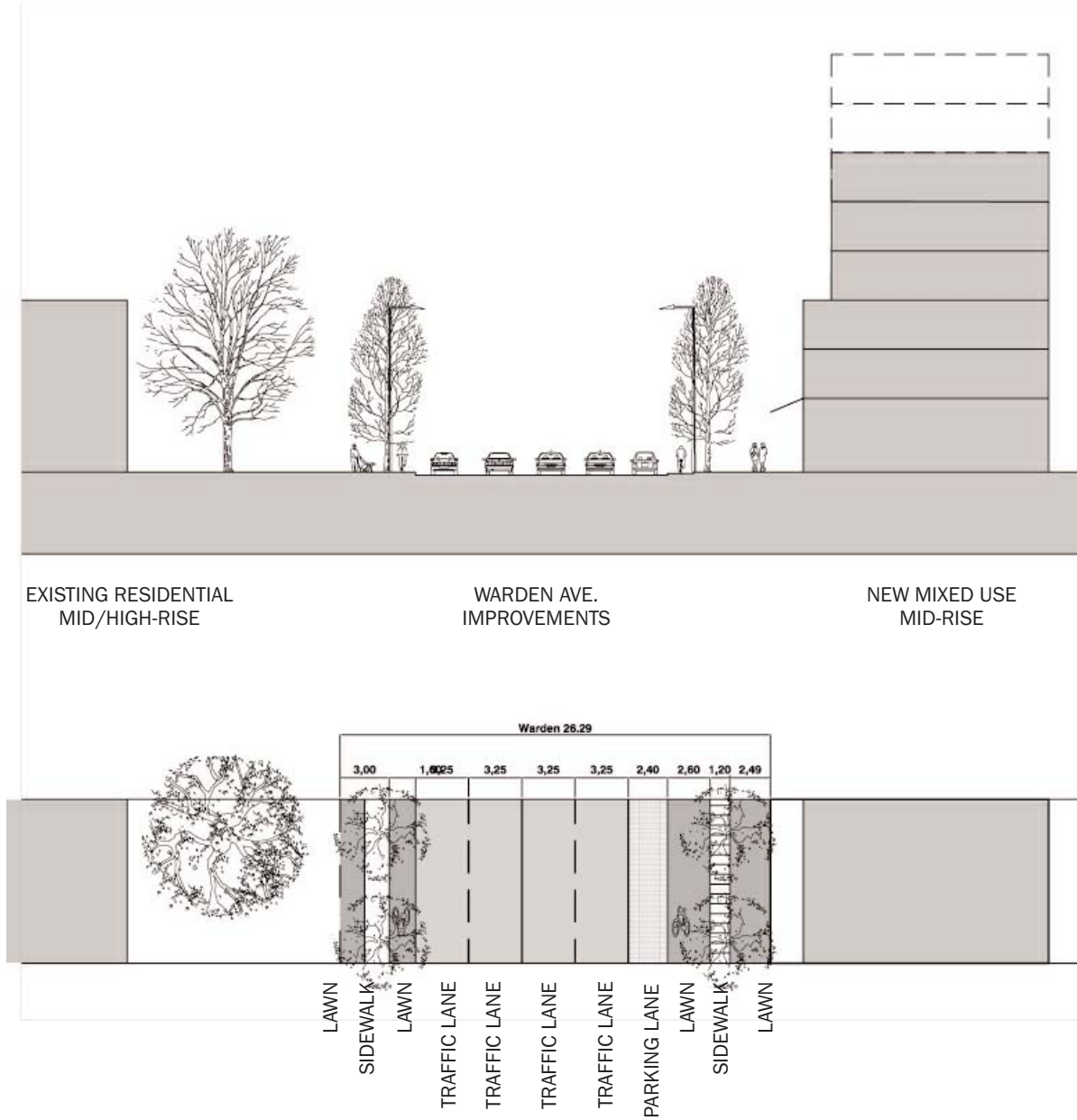


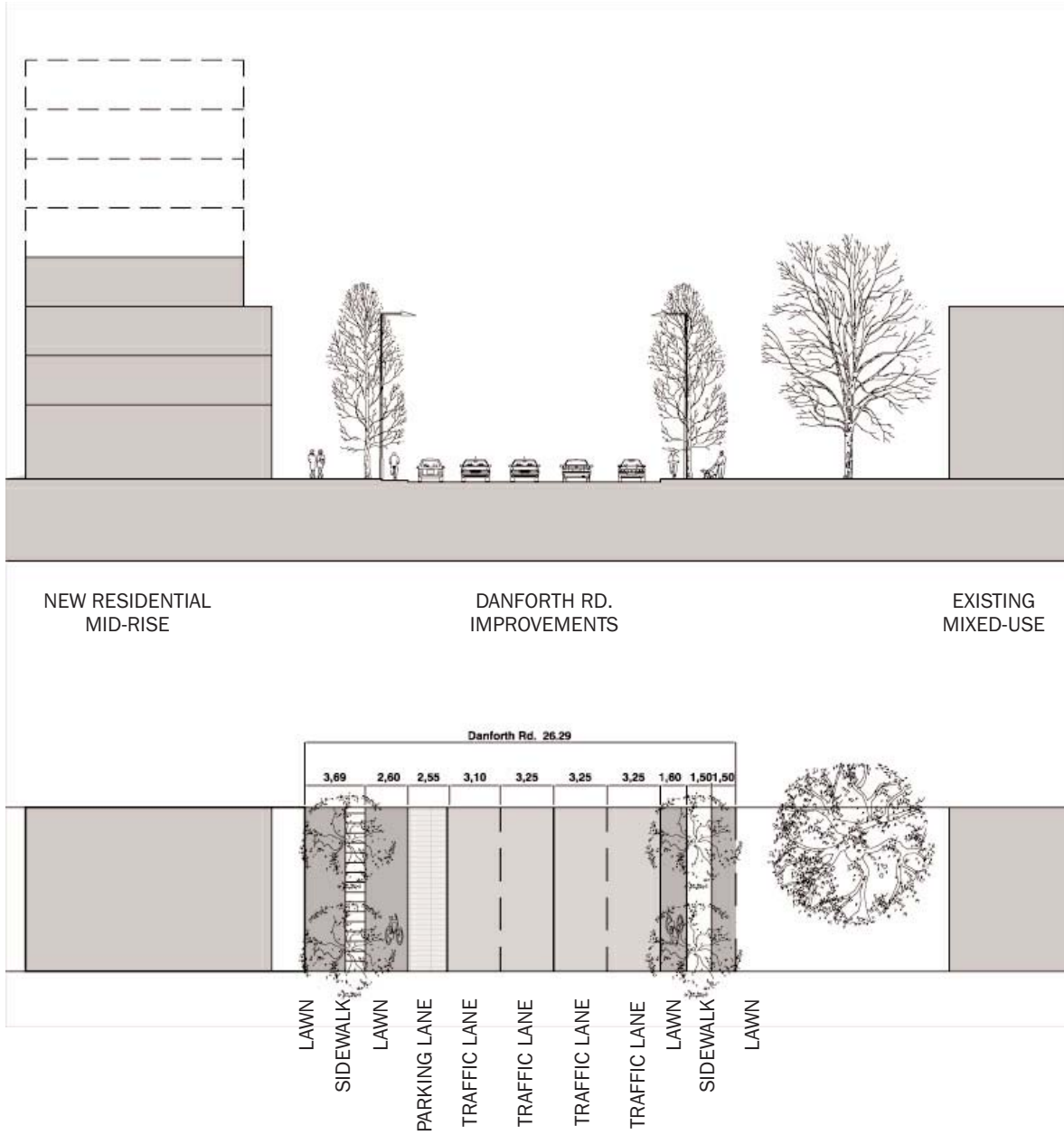
7. RECOMMENDED STREET AND GREEN SPACE SECTIONS

In order to give more detail to the recommended Public Frameworks for the two Study Areas, we have developed sections (*Figures 39* through *45*) taken through major existing streets, the central landscaped boulevard recommended for Warden Corridor Area A and typical local street and private lanes. These sections show recommended pavement widths, setbacks and landscaping. They also indicate building heights consistent with the relevant Potential Development Scenario.



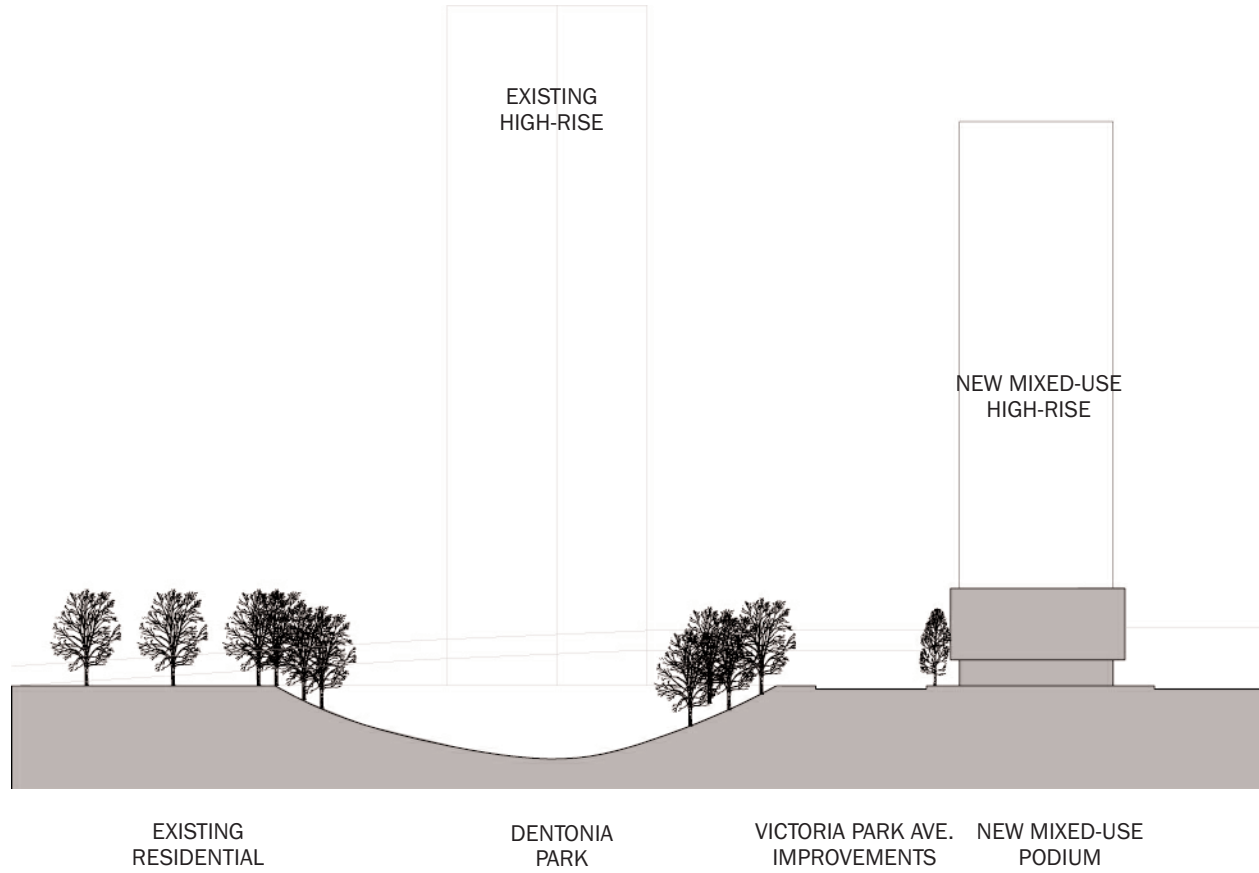
Street Section: Warden Avenue

Figure 39



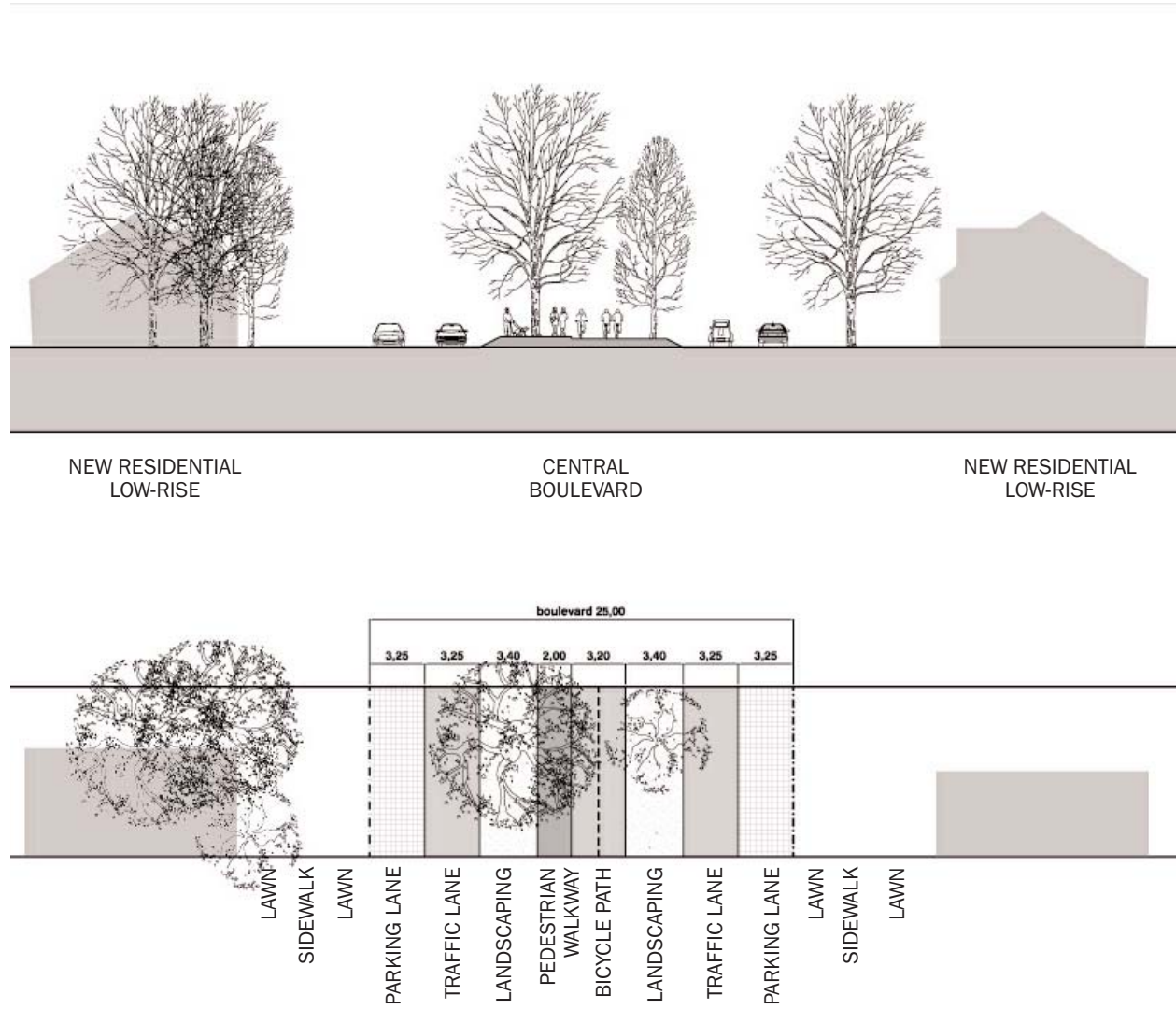
Street Section: Danforth Road

Figure 40



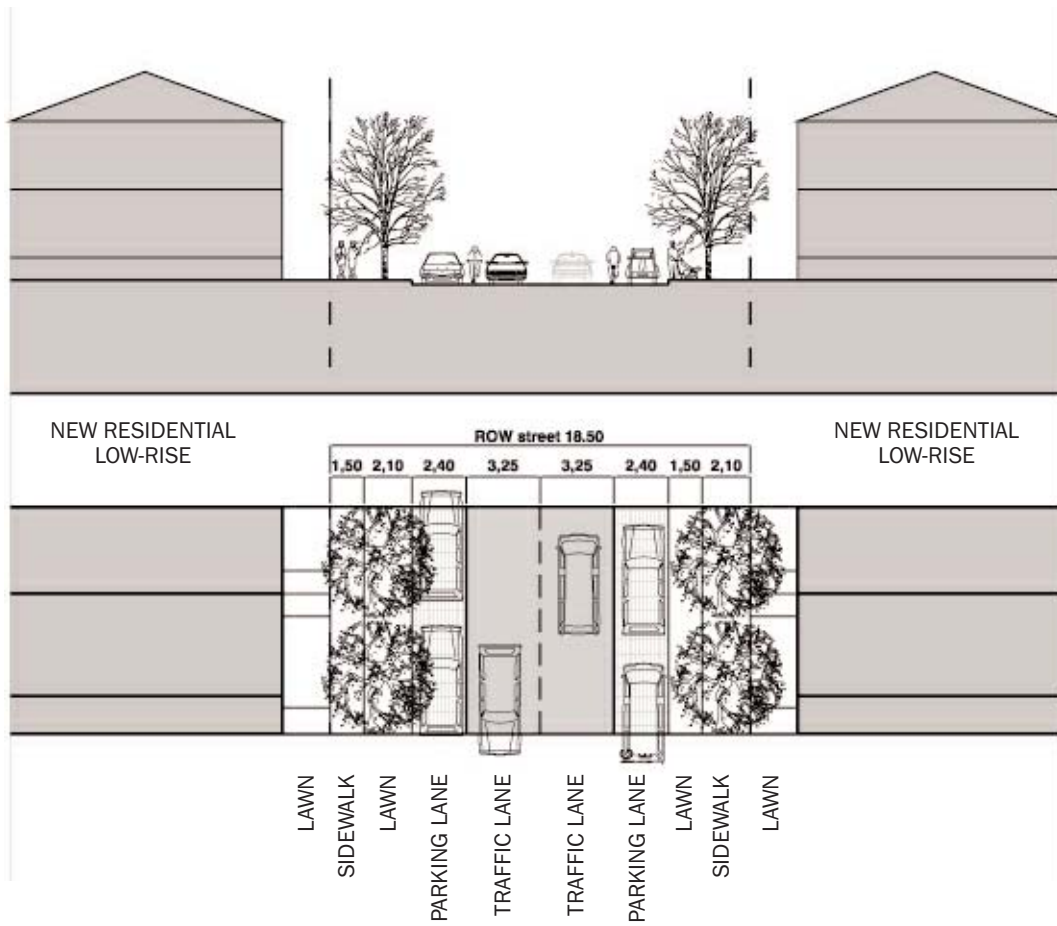
Street Section: Victoria Park Avenue

Figure 41



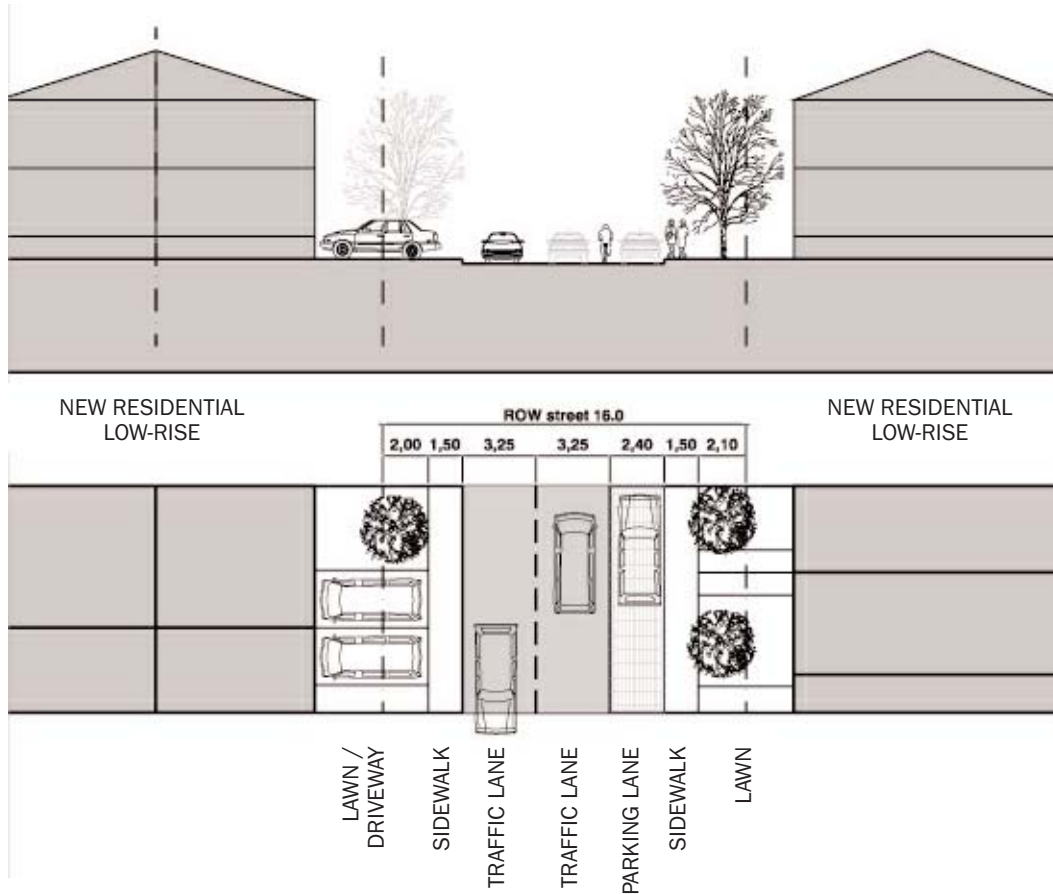
Street Section: Central Boulevard

Figure 42



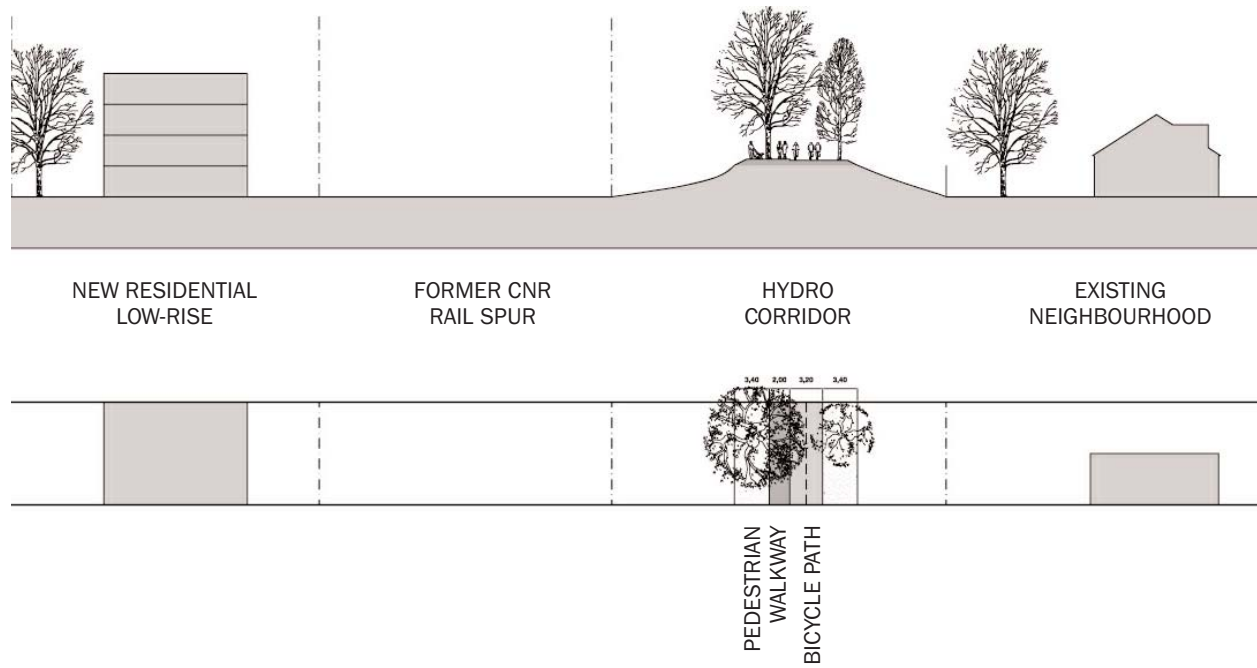
Street Section: Typical Street (18.5m right-of-way)

Figure 43



Street Section: Alternate Street (16.0m right-of-way)

Figure 44



Green Space Section: Hydro R.O.W. (North of St. Clair Avenue)

Figure 45