

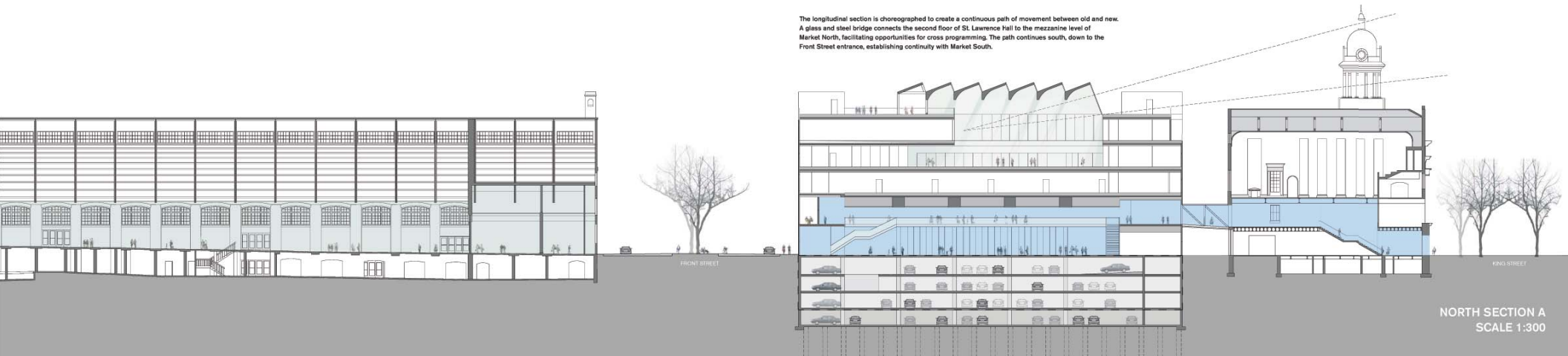


## ROOFTOP PARK

The public spirit of the design culminates in a rooftop park, both a major component of the green agenda and a new public space. 50% of the roof is planted as an urban agricultural garden, highlighting native herbs, fruits and vegetables that will be used by the restaurant and incubator kitchens. The saw-tooth roofscape of south facing photovoltaic solar panels and north facing skylights (over the atrium below) creates a canopy over the event terrace. The solar energy is harvested to power LED lighting to bring natural light into the Market Hall below.



The longitudinal section is choreographed to create a continuous path of movement between old and new. A glass and steel bridge connects the second floor of St. Lawrence Hall to the mezzanine level of Market North, facilitating opportunities for cross programming. The path continues south, down to the Front Street entrance, establishing continuity with Market South.



NORTH SECTION A  
SCALE 1:300