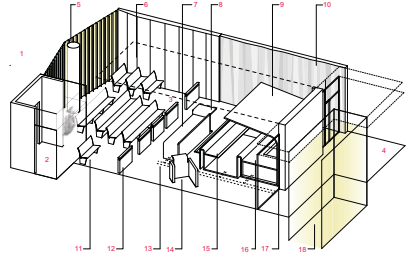
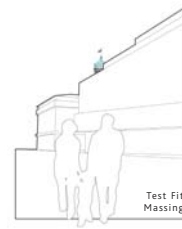
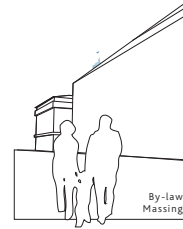


Court Room Detail

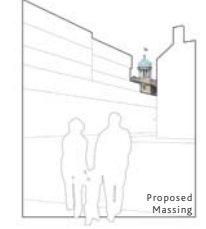
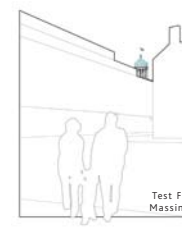
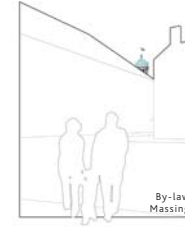


- 1 Public Waiting Lobby
- 2 Accessible Sound Lock
- 3 Accessible Public Gallery
- 4 Separate Judicial Circulation
- 5 Translucent Channel Glass Screen
- 6 Perforated Bamboo Screen
- 7 Prosecutor's Table
- 8 Plaintiff's Lectern
- 9 Dais Canopy
- 10 Cast Plaster Acoustic Panels
- 11 High Recycled Content Carpet Tile
- 12 Movable Court Bar
- 13 In-Floor Power/Data/Communication/Security
- 14 Movable Accessible Witness Box
- 15 Clerk's Desk
- 16 Justice of the Peace Dais
- 17 Translucent Glass Screen Borrowed Light
- 18 Monitor

View of Landmark from Market Lane*



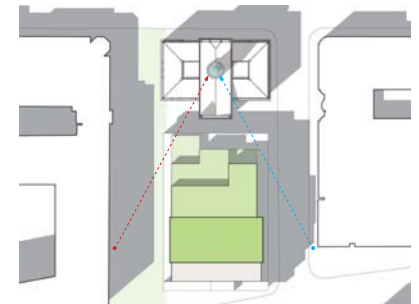
View of Landmark from Front and Jarvis Streets*



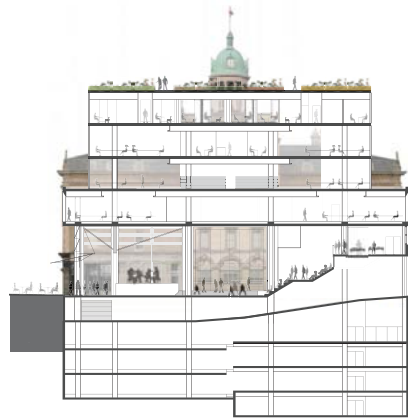
West Elevation 1:300



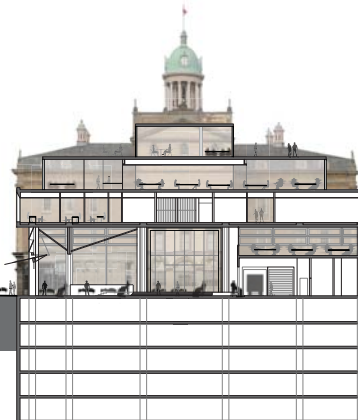
North Elevation 1:300
Slate and Gardens Terraces step towards St Lawrence Hall



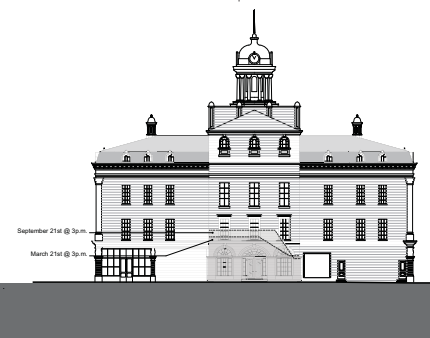
Shadow Study: March 21, 3pm 1:1000



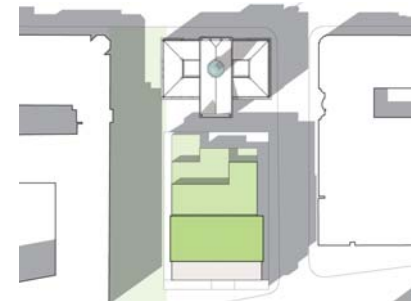
Cascading Stairs 1:300



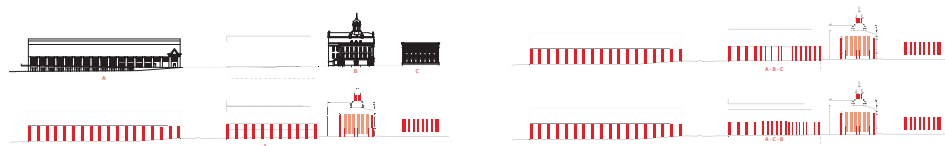
Market Stage 1:300



St Lawrence Hall, South Elevation 1:300
Reduced shadow impact on St Lawrence Hall and Ballroom



Shadow Study: Sept 21, 3pm 1:1000



Elevation Pattern Study

