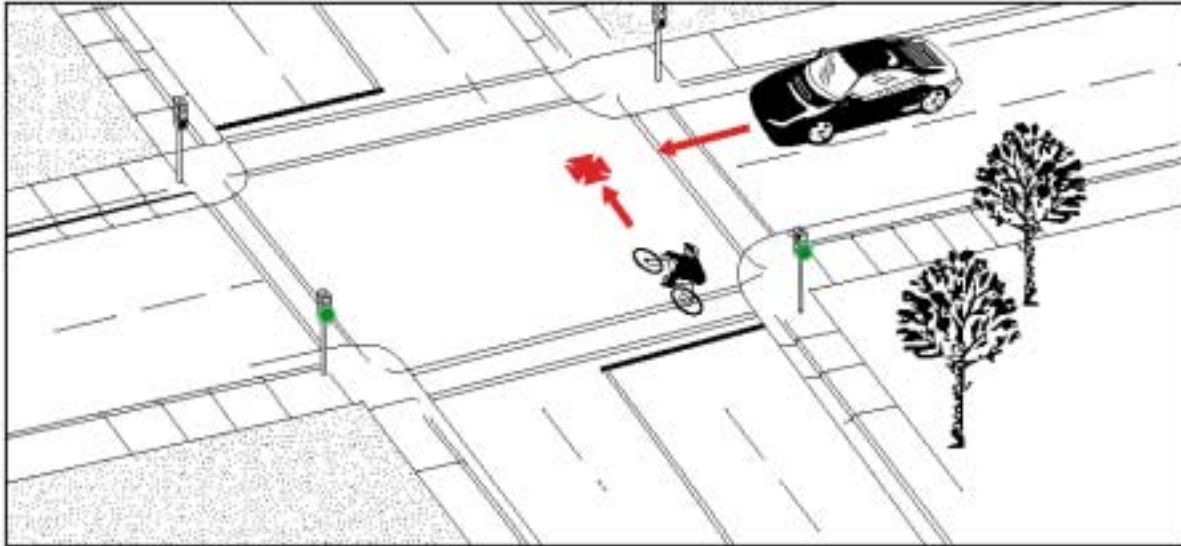


Type 1:

# Drive Out At Controlled Intersection

**Frequency:** 284 cases; 12.2% of all collisions  
**Severity:** 3% resulted in major injuries  
 No fatalities



**Description:** This type of collision occurred as a motorist was starting or stopping at a controlled intersection, and collided with a cyclist who had the right-of-way or was crossing at a crosswalk.

**Traffic Control:**

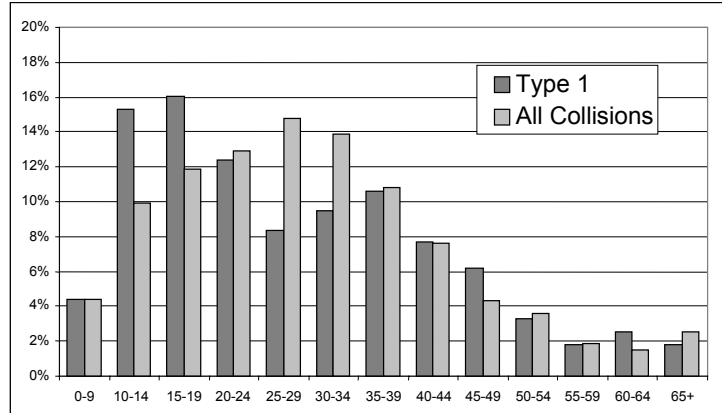
Stop Sign	75%
Traffic Signal	18%
Ped. Cross-Over	6.5%

**Summary:** In comparison to all collisions, this type tended to involve more young cyclists (ages 10 to 19). Resulting injuries were generally less severe than average.

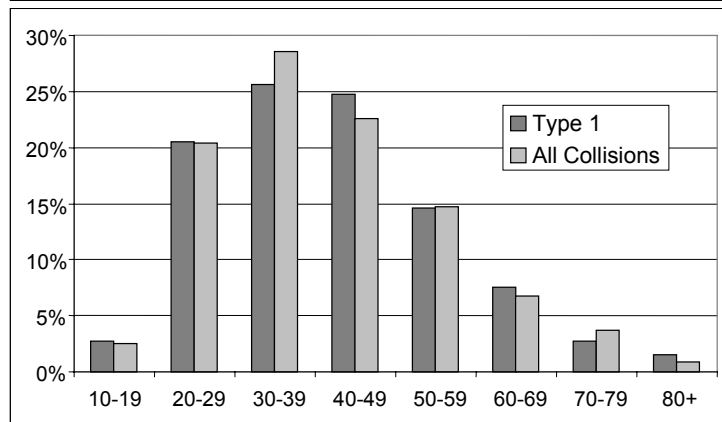
Other Significant Factors:	Type 1	All Collisions
Cyclist riding on sidewalk/crosswalk	51.1%	30.6%
Darkness	18.3%	14.9%
Rainy weather	10.9%	5.9%
Wet road surface	13.6%	7.9%
Motorist disobeying traffic control	7.4%	1.6%
Sight lines obstructed	4.2%	3.1%

## Type 1: Drive-Out at Controlled Intersection

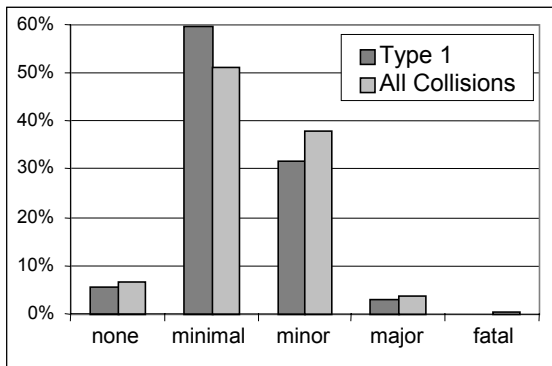
Cyclist's Age



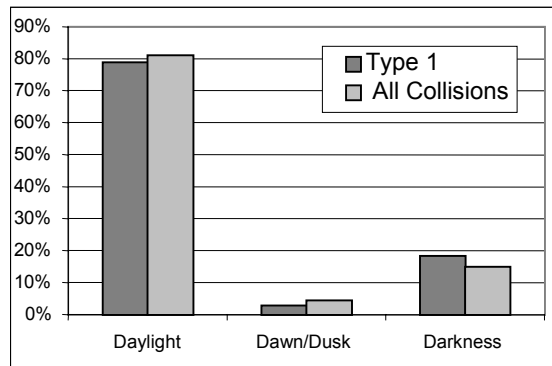
Driver's Age



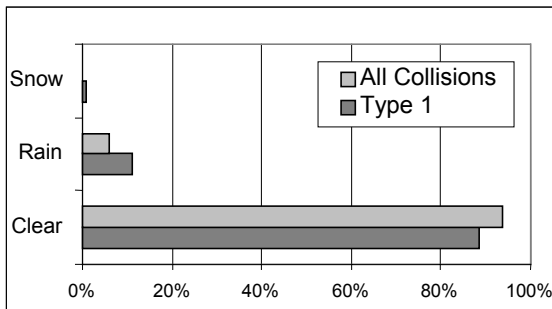
Cyclist's Injuries



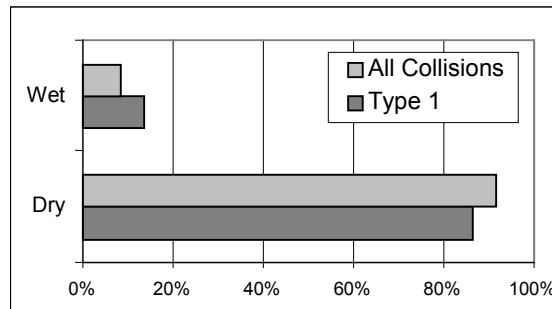
Light Conditions



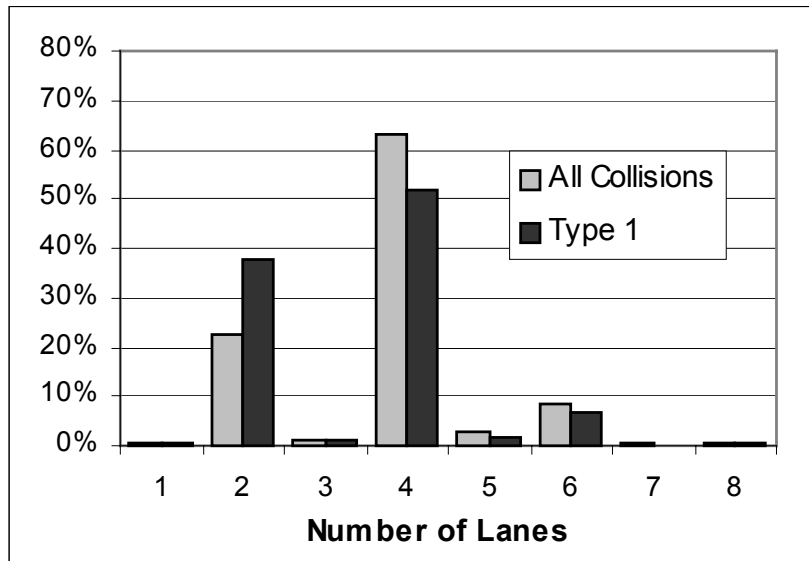
Weather Conditions



Road Surface Conditions



### Number of Lanes



### Drive Out at Controlled Intersection

284 Collisions

