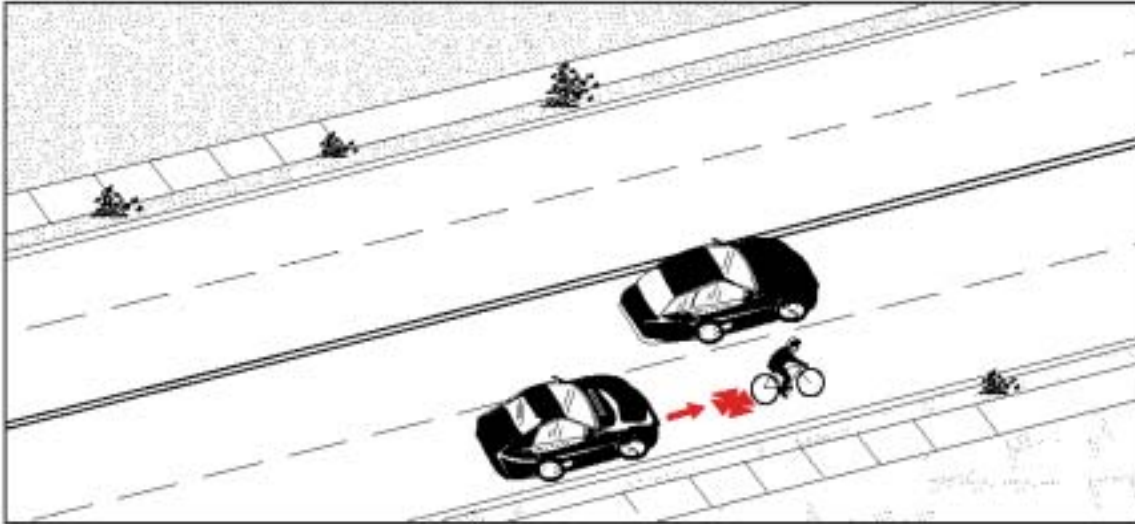


Type 10:

**Frequency:** 277 cases; 11.9% of all collisions  
**Severity:** 2.7% resulted in major injuries  
 4 fatalities (out of 10 overall)

# Motorist Overtaking Cyclist



**Description:** Both parties were traveling the same direction. The motorist either brushed by or rear-ended the cyclist.

**Summary:** In comparison to collisions of all types, this type tended to involve more adult cyclists (age 23 to 37). Resulting injuries were more likely to be either minimal or fatal, with fewer ‘in-between’ injuries than other types of collisions.

**Environmental Conditions:** Light and weather conditions do not appear to have been significant factors in this type of crash.

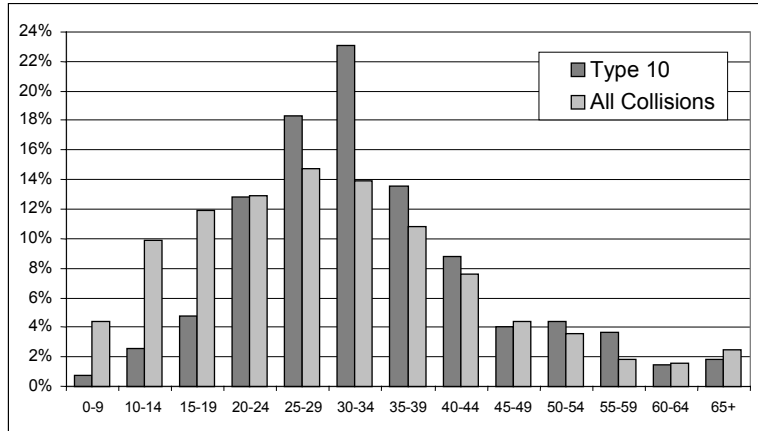
**Geographic Distribution:** Much more frequent in central areas.

**Other Significant Factors:**

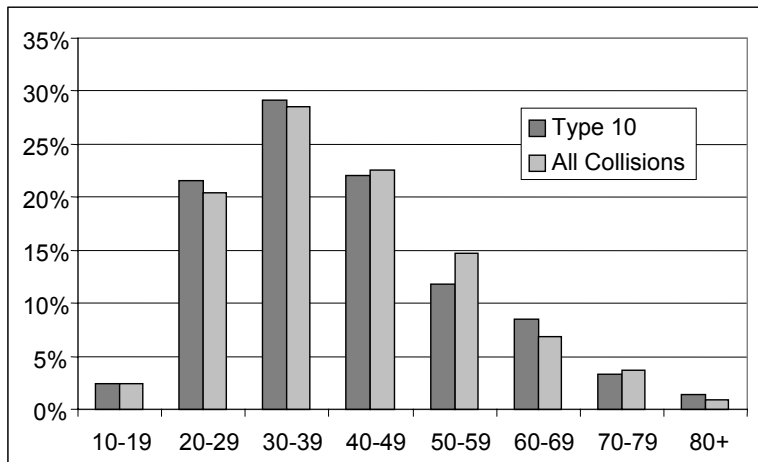
	<b>Type 10</b>	<b>All Collisions</b>
Motorist unsafe/improper lane-change	16%	2.9%
Motorist misjudged passing space	13.4%	1.6%
Cyclist’s path obstructed	4.0	0.7%
Vehicular assault (6 of 16 cases overall)	2.2%	0.7%
Taxi	7.6%	3.1%

## Type 10: Motorist Overtaking Cyclist

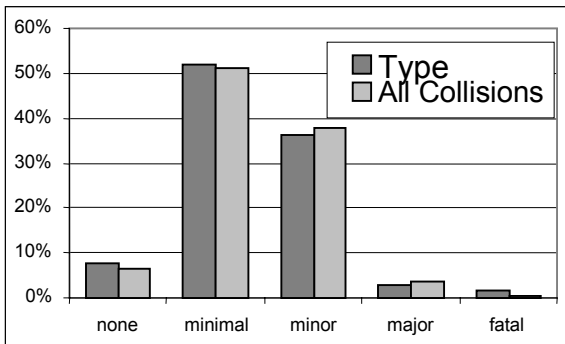
Cyclist's Age



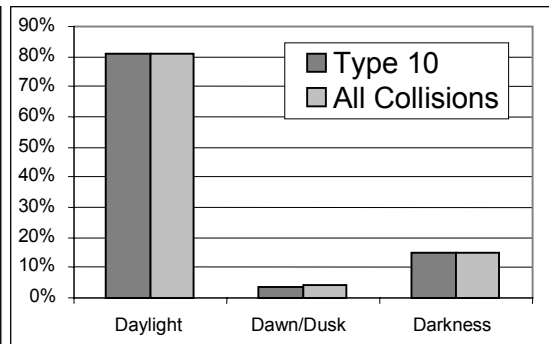
Driver's Age



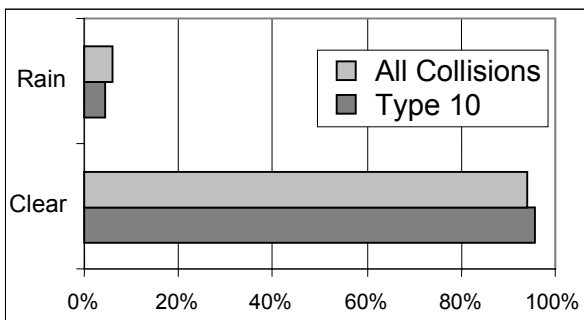
Cyclist's Injuries



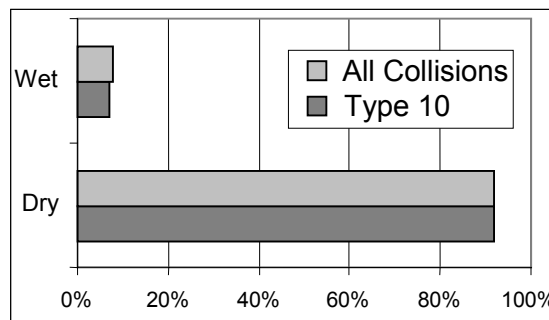
Light Conditions



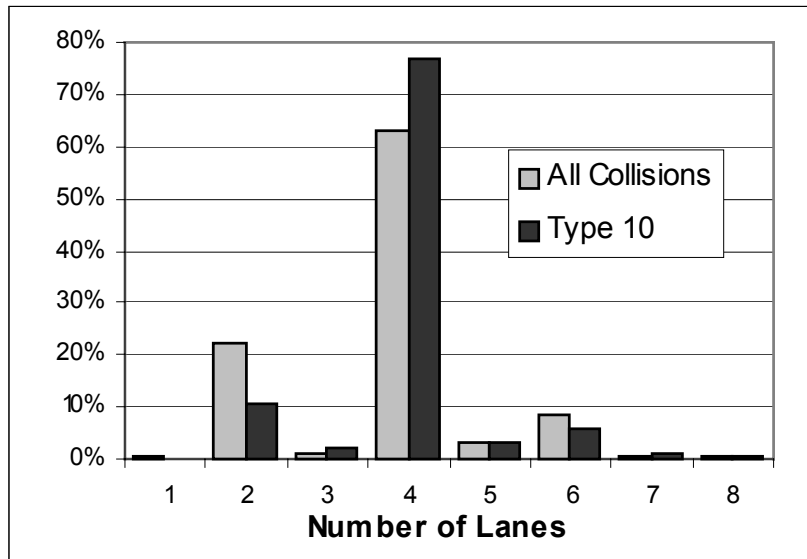
Weather Conditions



Road Surface Conditions



Number of Lanes



Motorist Overtaking Cyclist  
278 Collisions

