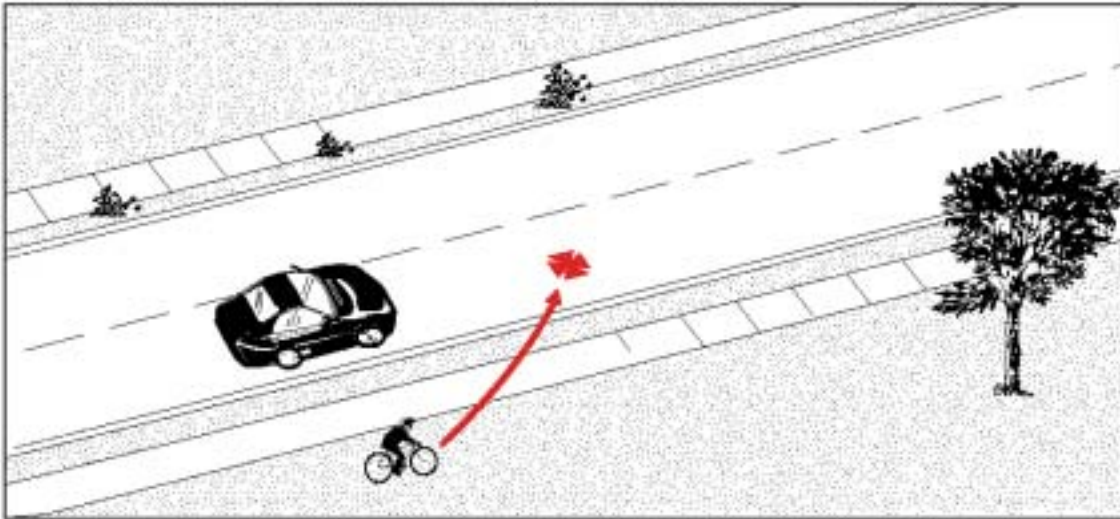


Type 11:

Ride Out At Mid-Block

| | |
|-------------------|---|
| Frequency: | 51 cases; 2.2% of all collisions |
| Severity: | 8% resulted in major injuries 1 fatality |



Description: The cyclist entered the roadway from the sidewalk, not at an intersection.

Summary: In comparison to all crashes, this type tended to involve more young cyclists (under 15). Resulting injuries were generally more severe than average. Drivers in their thirties seem to be over-represented.

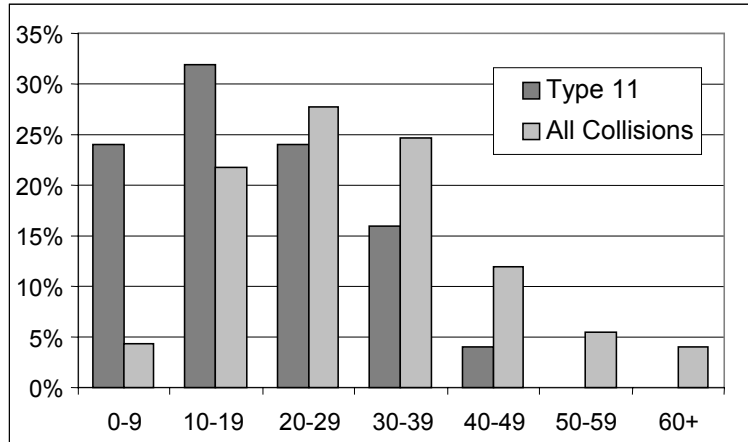
Environmental Conditions: Poor visibility or road conditions were not significant factors in these crashes.

| |
|--|
| Note: The small number of cases may limit the confidence of some statements about this type of crash. |
|--|

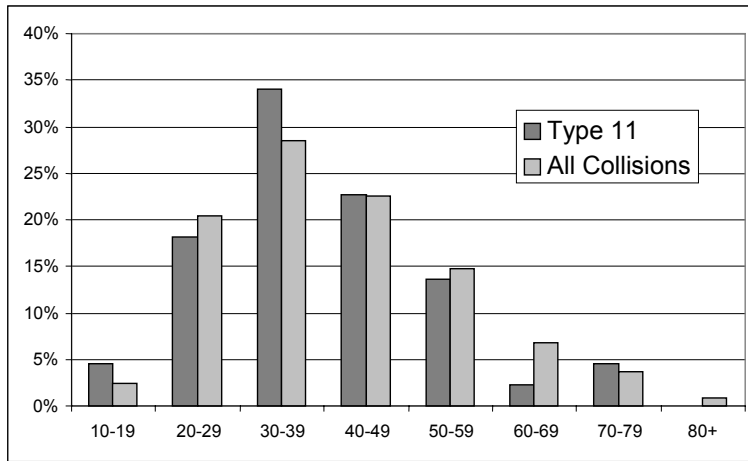
| Other Significant Factors: | Type 11 | All Collisions |
|-----------------------------------|----------------|-----------------------|
| Child cyclist | 31.4% | 5.7% |
| Sight lines obstructed | 5.9% | 3.1% |

Type 11: Ride Out at Mid-Block

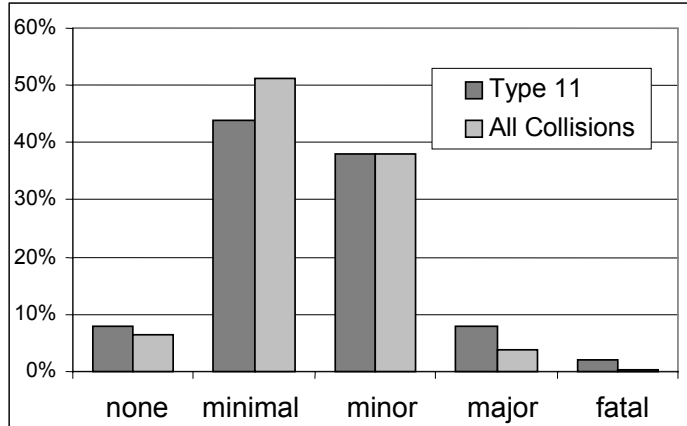
Cyclist's Age



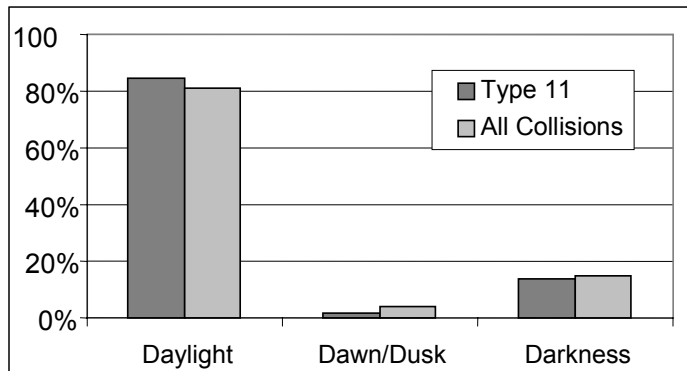
Driver's Age



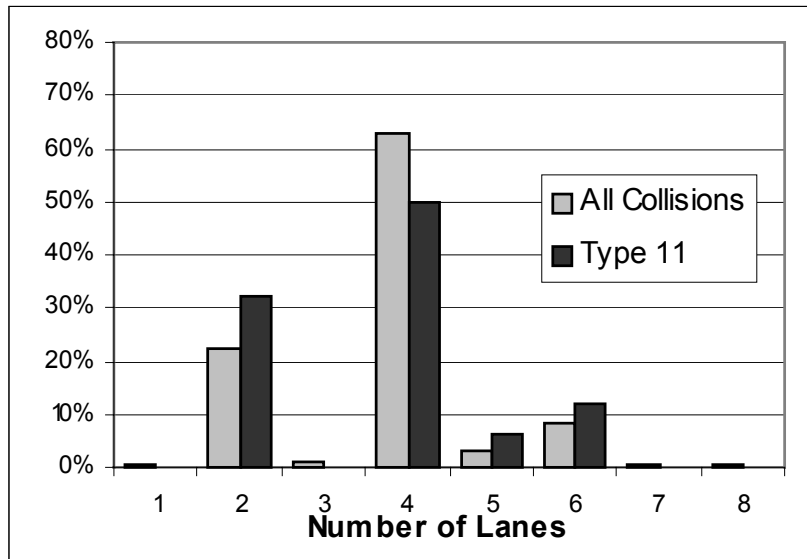
Cyclist's Injuries



Light Conditions



Number of Lanes



Ride Out at Mid-Block 50 Collisions

