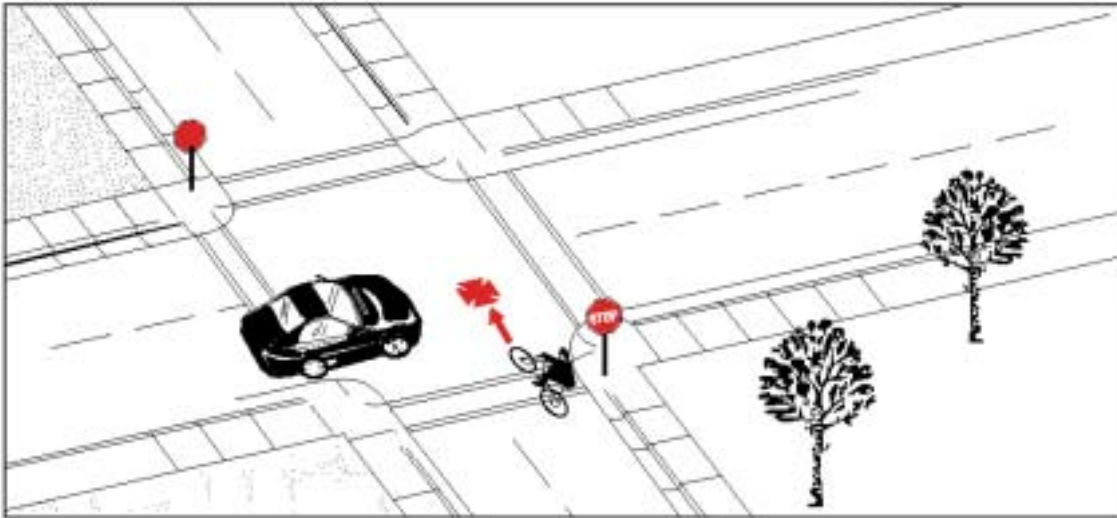


Type 12:

**Frequency:** 65 cases; 2.8% of all collisions

**Severity:** 3 major injuries (5.3%)  
2 fatalities (2.5%)

# Ride Out At Controlled Intersection



**Description:** The cyclist failed to stop, or proceeded into the intersection before it was safe, and collided with a motor vehicle.

**Summary:** Children under 15 were more frequently involved in this type of collision, as well as adults over 65. Injuries were only slightly more severe than average, but there were two fatalities, out of only 65 cases. Drivers in their forties appear to be under-represented.

**Traffic Control:**

Stop Sign	62%
Traffic Signal	34%
Ped. Cross-Over	3%

**Geographic Distribution:**

More frequent in central areas.

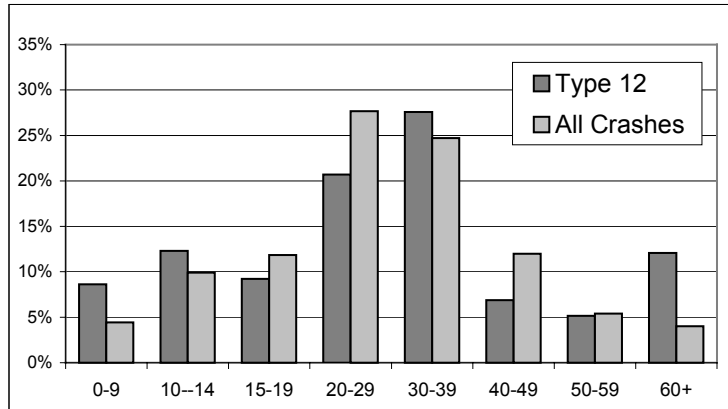
**Other Significant Factors:**

Cyclist disobeyed traffic control  
Darkness  
Child cyclist

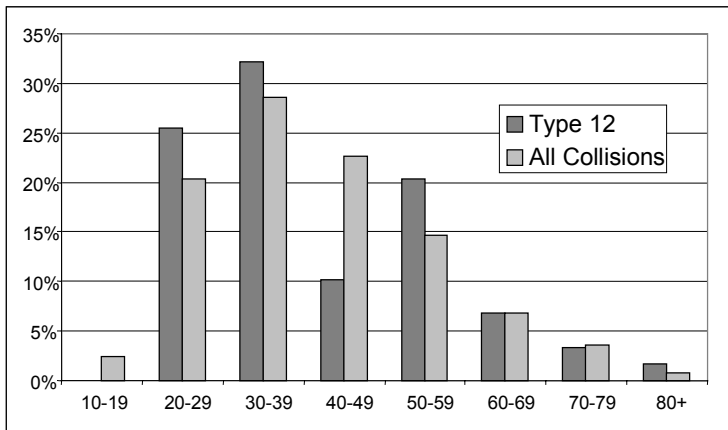
	Type 12	All Collisions
Cyclist disobeyed traffic control	25%	1.9%
Darkness	16.4%	14.9%
Child cyclist	12.3%	5.7%

## Type 12: Ride Out at Controlled Intersection

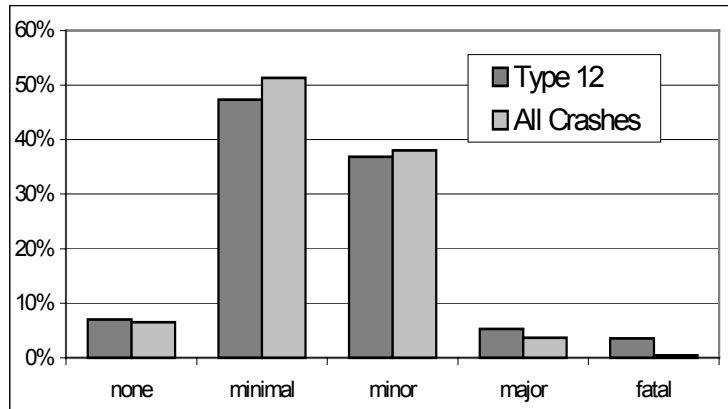
Cyclist's Age



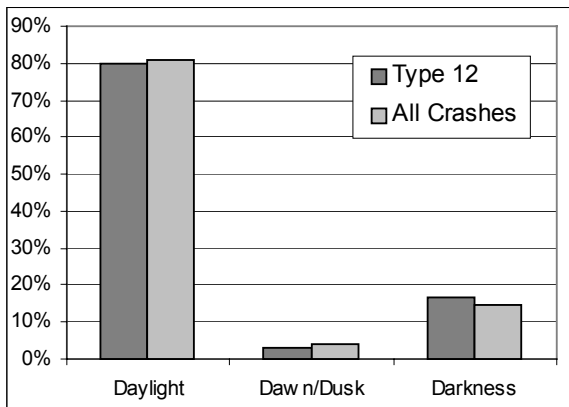
Driver's Age



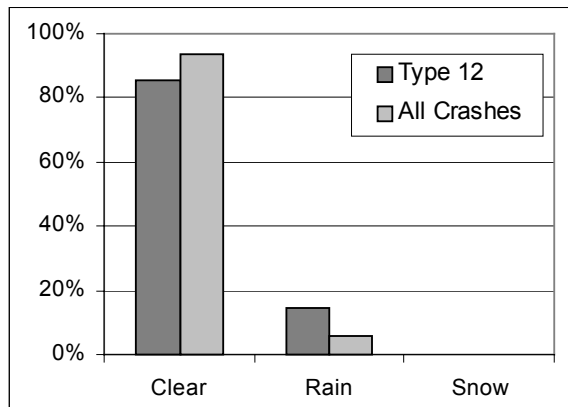
Cyclist's Injuries



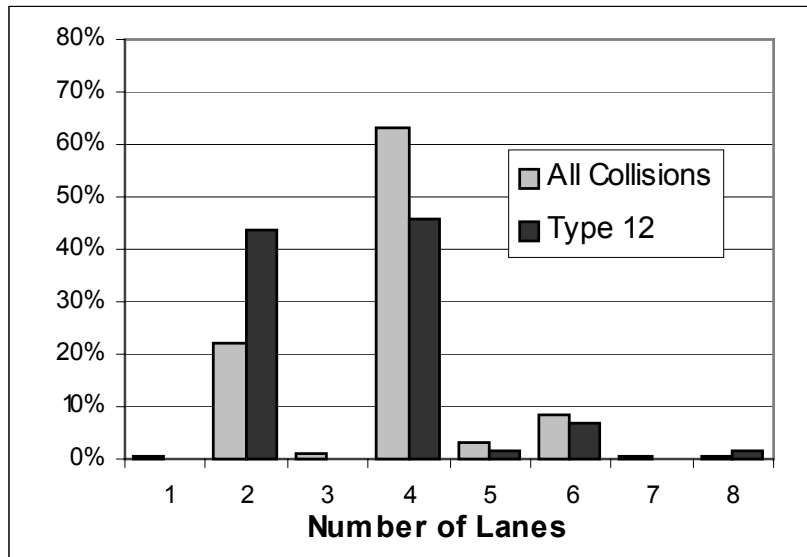
Light Conditions



Weather Conditions



### Number of Lanes



### Ride Out at Controlled Intersection 65 Collisions

