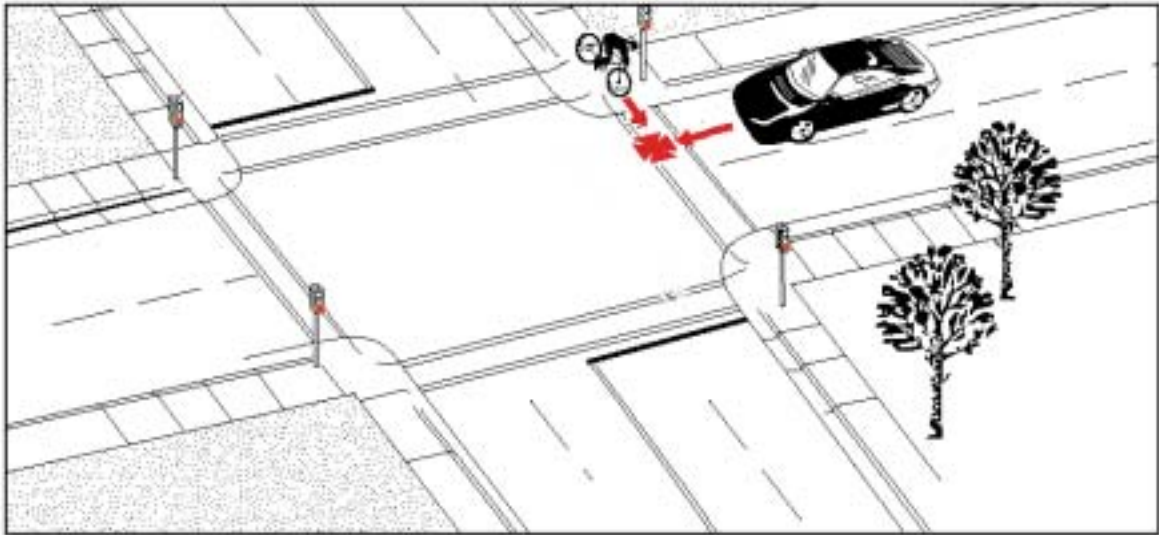


Type 13:

Ride Out From Sidewalk (at Intersection)

Frequency:	44 cases; 1.9% of all collisions
Severity:	11.6% resulted in major injuries No fatalities



Description: The cyclist entered an intersection from the sidewalk, against the right of way.

Summary: In comparison to all crashes, this type tended to involve more young cyclists (under 18). Resulting injuries were slightly more severe than average. Drivers in their sixties may be over-represented, but the small number of cases limits the certainty of this statement.

Traffic Control:

Traffic Signal	59%
Stop Sign	33%
No Control	13.6%
Ped. Cross-Over	4.5%

Environmental Conditions:

Darkness, poor weather and wet road conditions were not frequent factors.

Geographic Distribution:

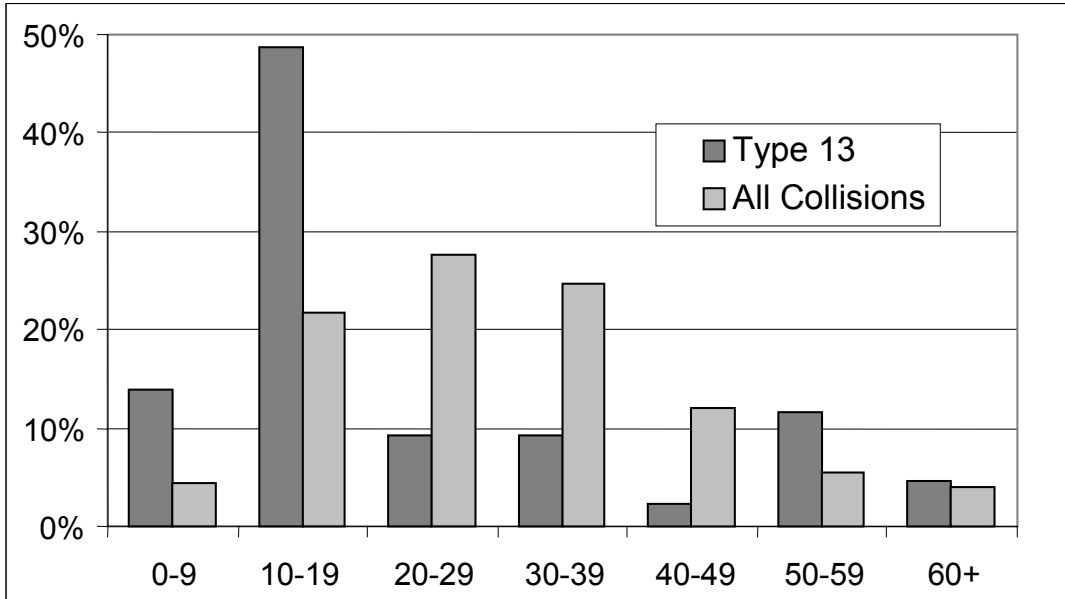
More frequent in outer areas.

Other Significant Factors:

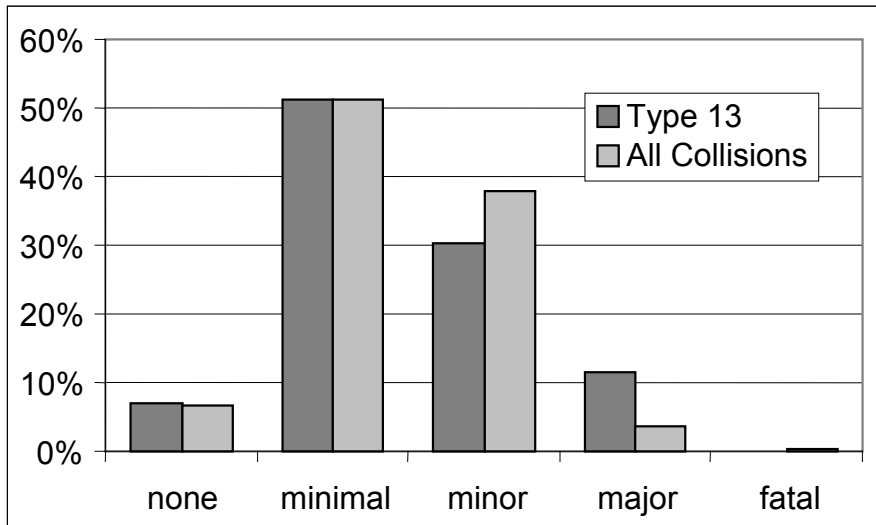
	Type 13	All Collisions
Cyclist disobeyed traffic control	27%	1.9%
Child cyclist	25%	5.7%
Sight lines obstructed	11.4%	3.1%

Type 13: Ride Out From Sidewalk – At Intersection

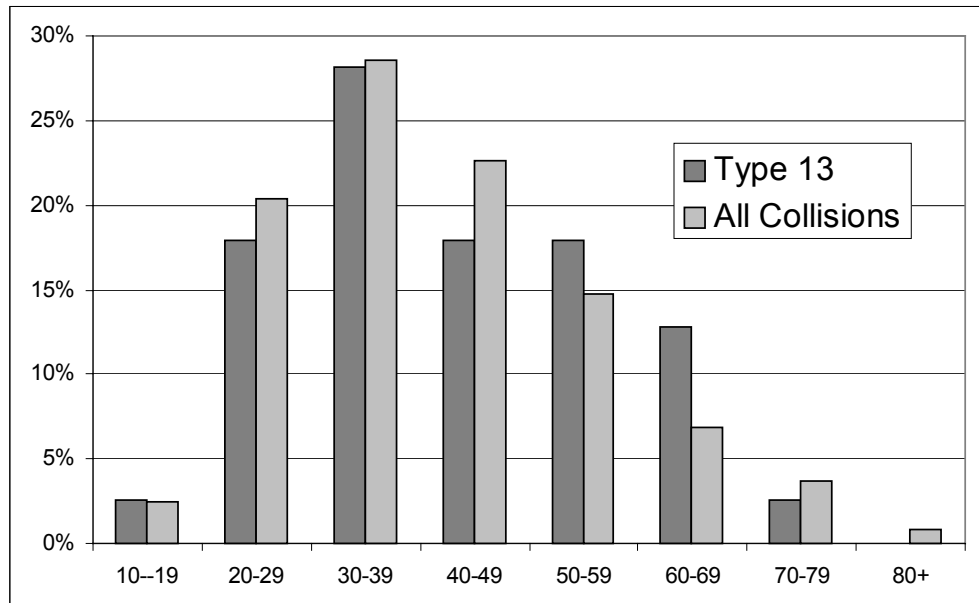
Cyclist's Age



Cyclist's Injuries



Driver's Age



Ride Out From Sidewalk 44 Collisions

