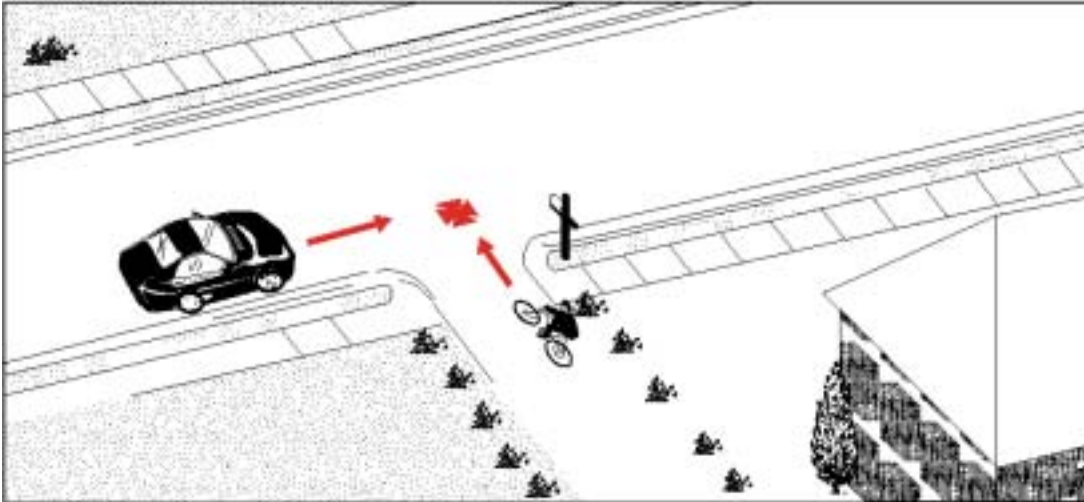


Type 14:

# Ride Out From Lane or Driveway

**Frequency:** 29 cases; 1.3% of all collisions

**Severity:** 1 major injury (4.3%)  
No fatalities



**Description:** The cyclist was emerging onto the roadway from a private or commercial driveway, or a lane. While the cyclist may have been initiating a turn, the turning movement was not considered the primary factor in the collision.

**Summary:** Almost all the cyclists in this type of collision were under 16. Resulting injuries seem to be more severe than average.

**Environmental Conditions:** Weather, light and road conditions were not factors in these crashes.

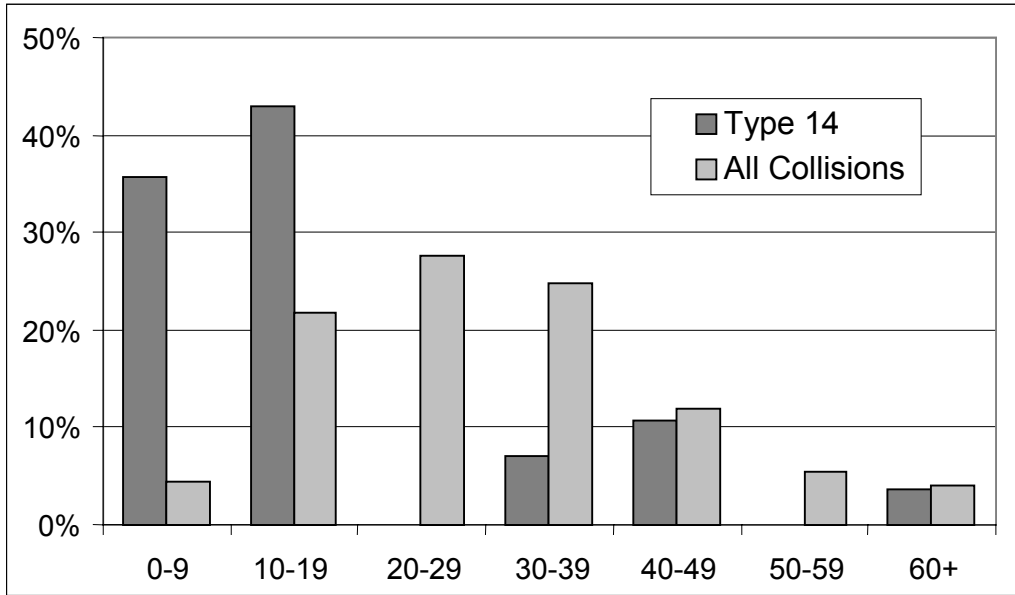
**Geographic Distribution:** Most occurred just outside core area.

**Note:** The small number of cases limits the confidence of some statements about this type of crash.

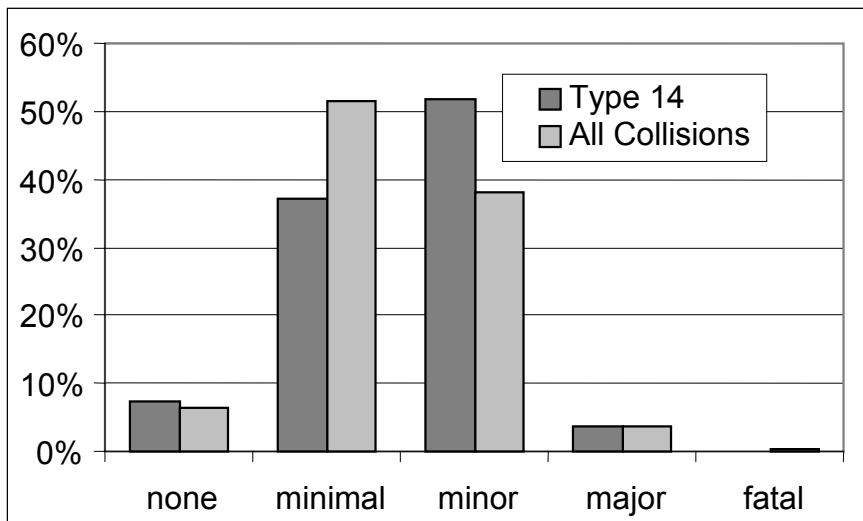
<b>Other Significant Factors:</b>	<b>Type 14</b>	<b>All Collisions</b>
Child cyclist	41.4%	5.7%
Sight lines obstructed	13.8%	3.1%

## Type 14: Ride Out from Lane or Driveway

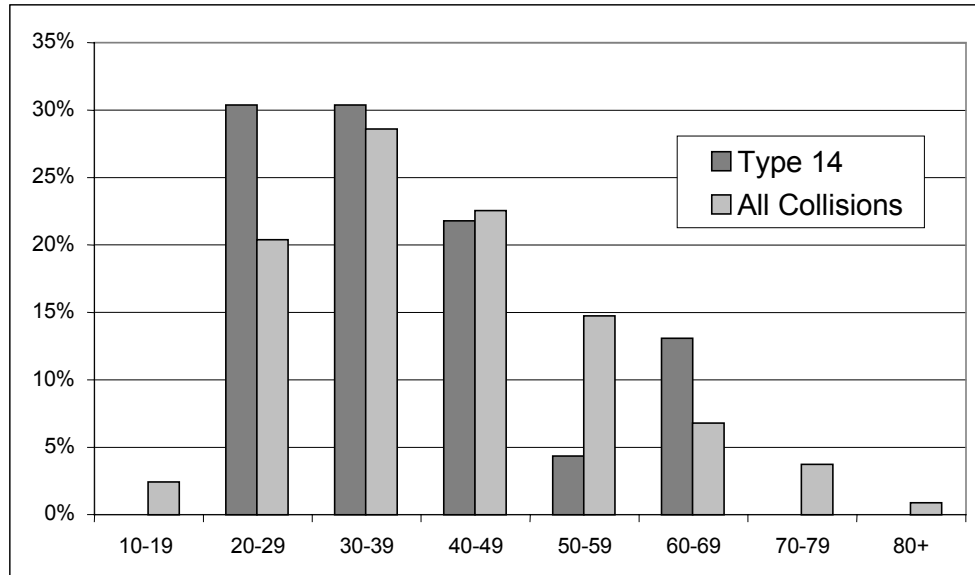
### Cyclist's Age



### Cyclist's Injuries



### Driver's Age



### Ride Out From Lane or Driveway 29 Collisions

