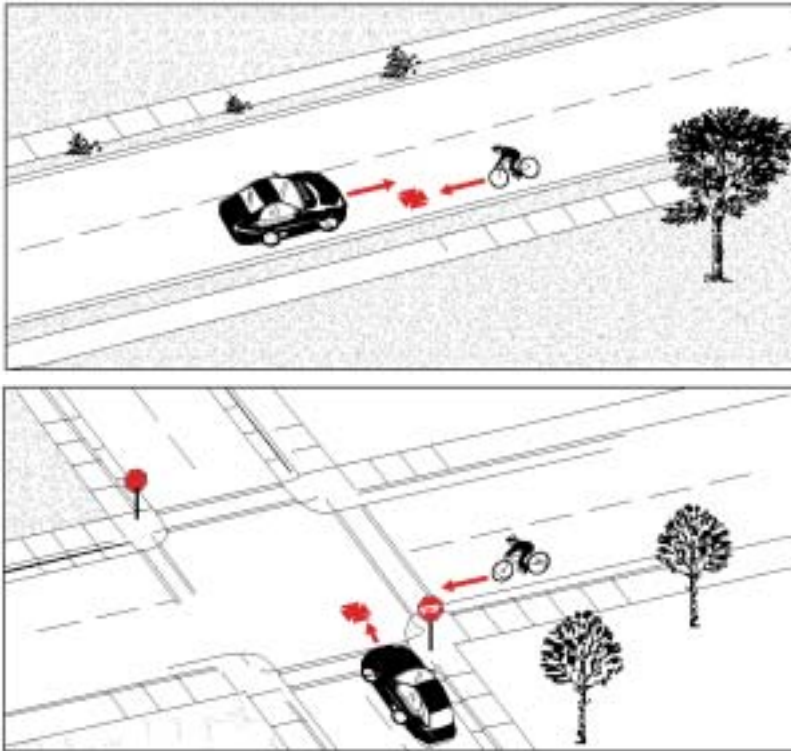


Type 15:

# Wrong Way Cyclist

<b>Frequency:</b>	59 cases; 2.5% of all collisions
<b>Severity:</b>	2 major injuries (3.6%) No fatalities



**Description:** The cyclist was riding against the flow of traffic. This was considered the primary factor, regardless of other vehicle manoeuvres involved.

**Environmental Conditions:** All cases took place in clear dry weather. Darkness may have been a contributing factor in 11 cases.

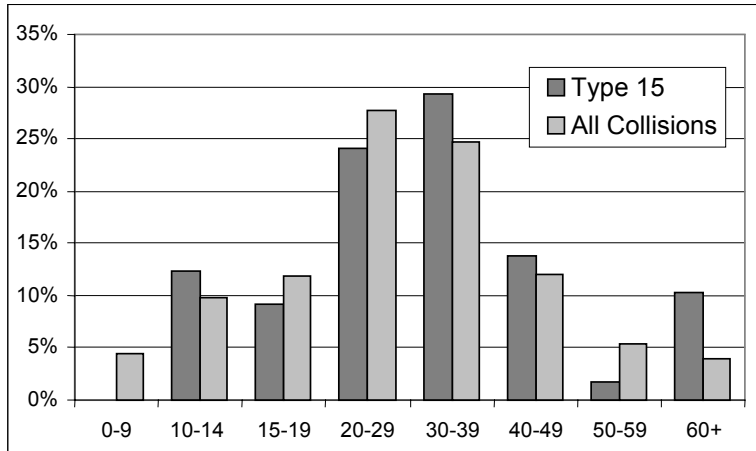
**Summary:** This type of collision involved no children under 10. Adults over 60 were more frequently involved than average. Resulting injuries were generally less severe than the average injuries for all crashes. Drivers over age 50 under-represented.

**Geographic Distribution:** More frequent in central areas.

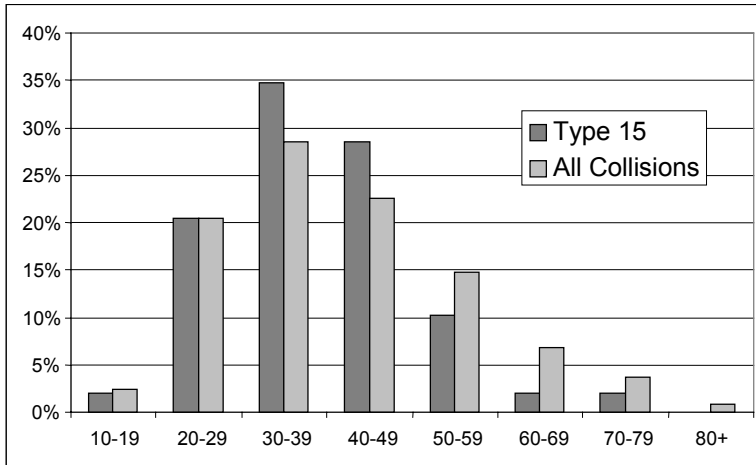
<b>Other Significant Factors:</b>	<b>Type 15</b>	<b>All Collisions</b>
Darkness	18.6%	14.9%
Sight lines obstructed	5.1%	3.1%

## Type 15: Wrong Way Cyclist

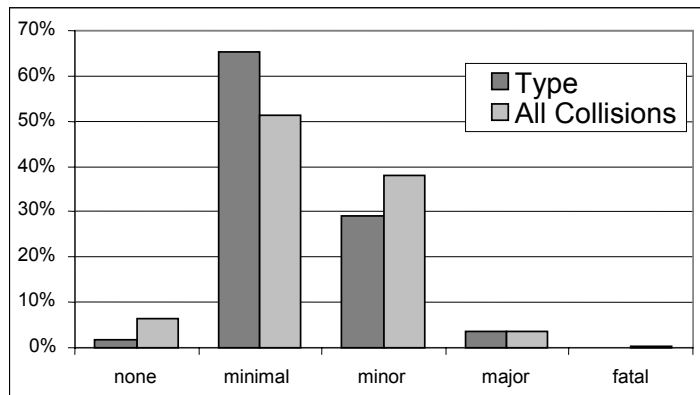
Cyclist's Age



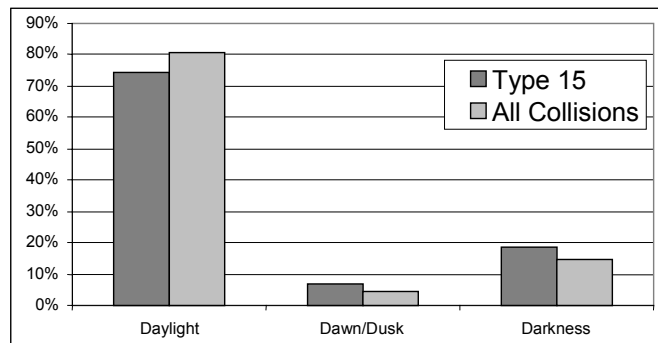
Driver's Age



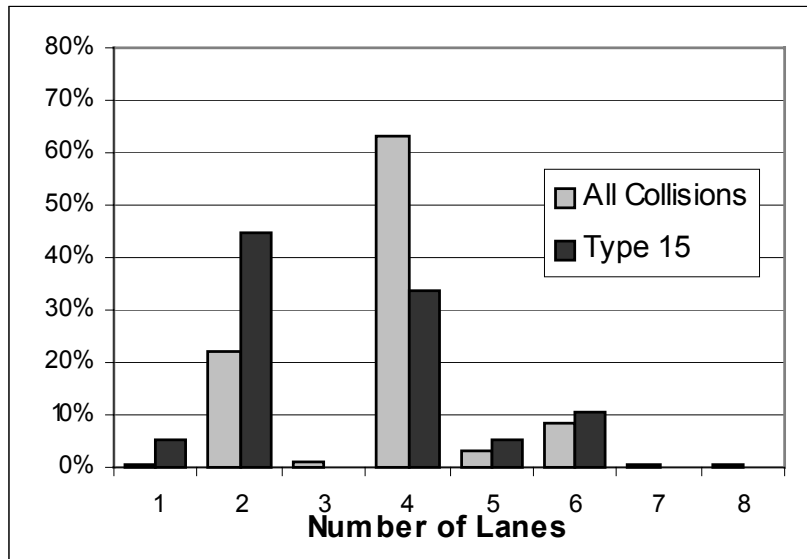
Cyclist's Injuries



Light Conditions



### Number of Lanes



### Wrong Way Cyclist 58 Collisions

