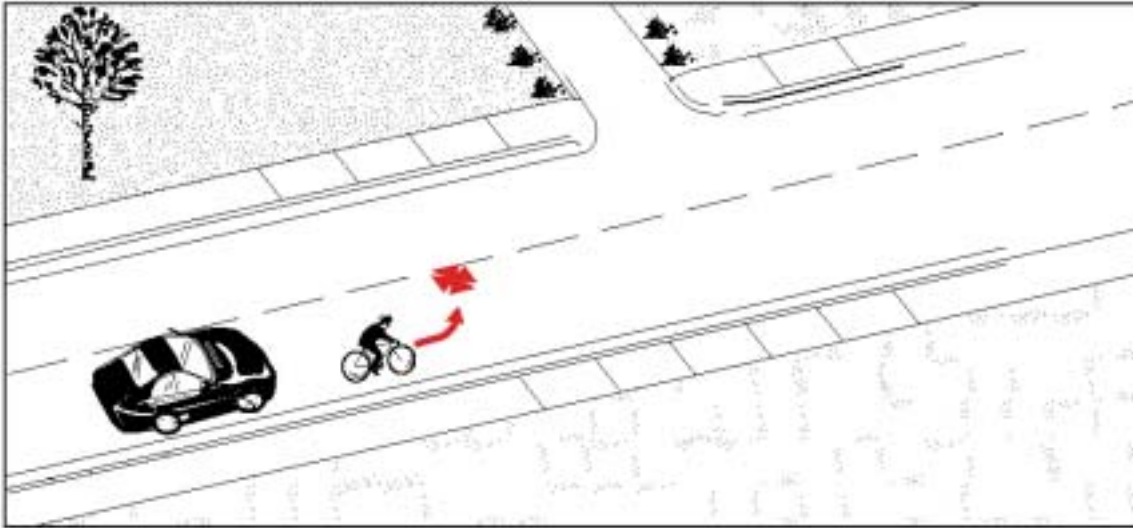


Type 16:

Cyclist Left Turn - In Front of Motorist

Frequency:	41 cases; 1.8% of all collisions
Severity:	Six major injuries (16% of cases) No fatalities



Description: The cyclist was executing a left turn across the path of the motorist, who was traveling in the same direction.

Summary: In comparison to all crashes, this type tended to involve more young cyclists (ages 10 to 19). Injuries, if any, were often more severe than average. Drivers over 60 may be under-represented.

Traffic Control:

No Control	61%
Traffic Signal	34%
Stop Sign	4.9%

Note: The small number of cases may reduce the confidence of some statements about this type of crash.

Other Significant Factors:

Darkness and/or poor visibility

Type 16

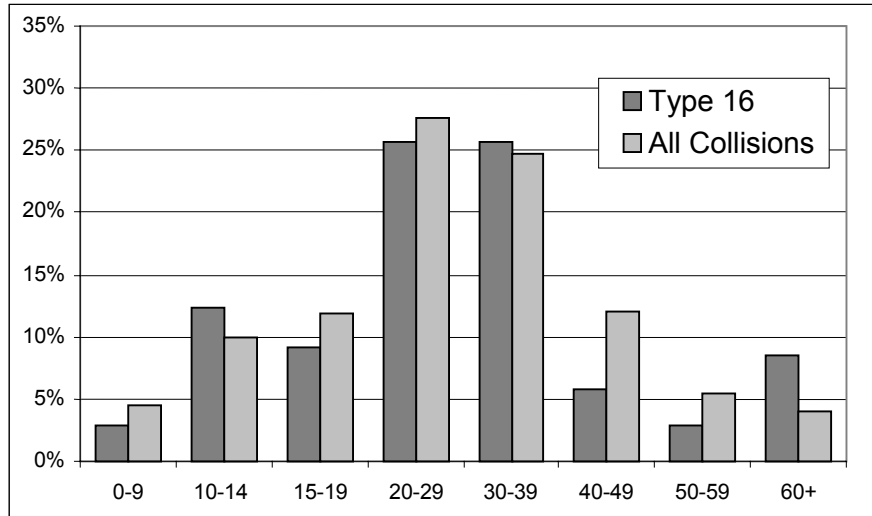
17.1%

All Collisions

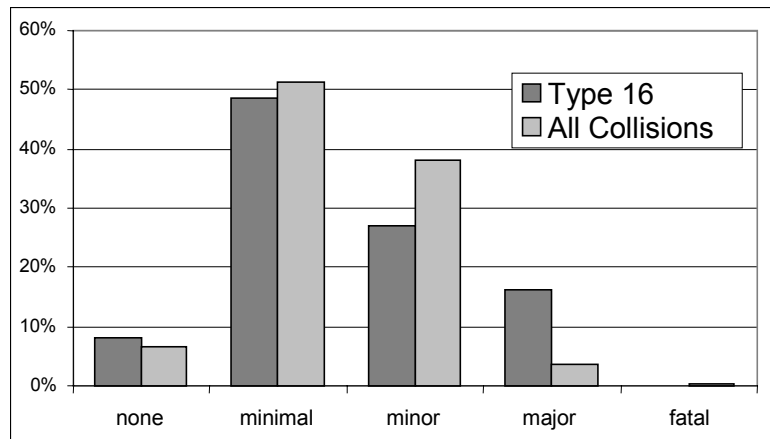
14.9%

Type 16: Cyclist Left Turn – In Front of Motorist

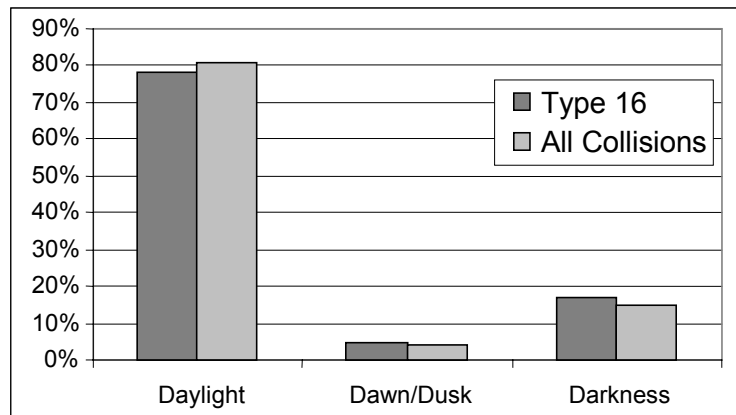
Cyclist's Age



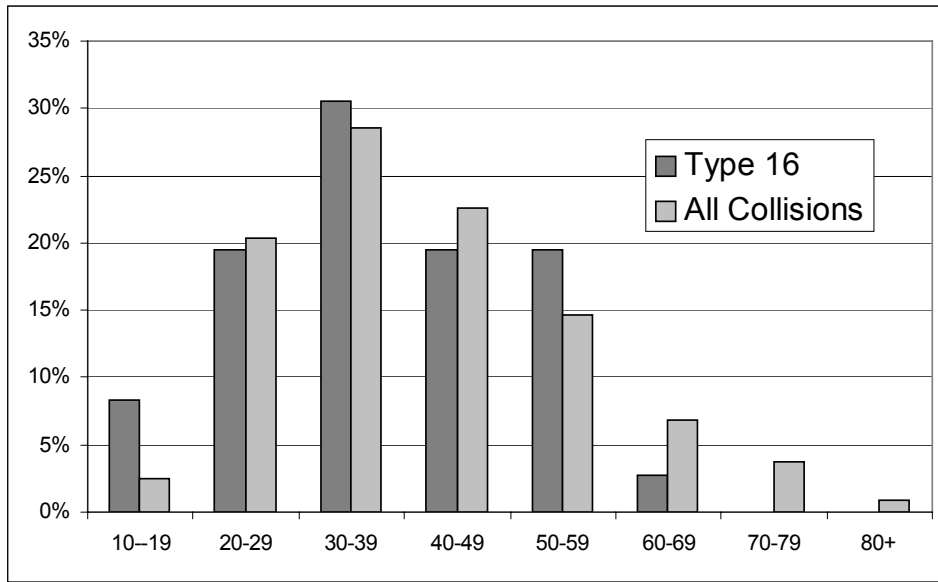
Cyclist's Injuries



Light Conditions



Driver's Age



Cyclist Left Turn in Front of Motorist 41 Collisions

