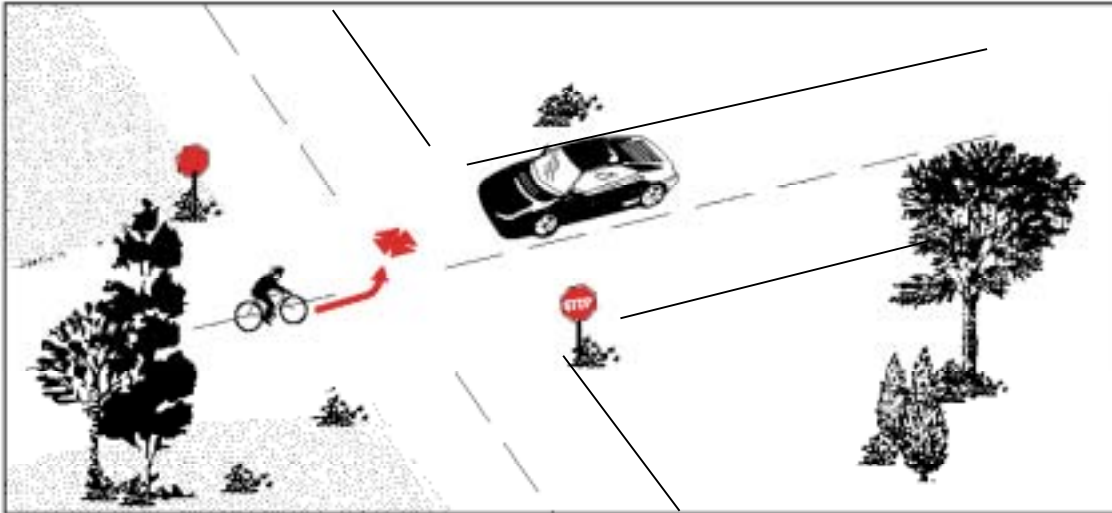


Type 17:

# Cyclist Left Turn - Facing Motorist

**Frequency:** 11 cases; 0.5% of all collisions

**Severity:** 2 major injuries (18.2%)  
No fatalities



**Description:** The cyclist was executing a left turn across the path of the motorist, who was traveling in the opposite direction.

**Summary:** In comparison to all crashes, this type seems to involve more young cyclists (ages 15 to 19). Resulting injuries apparently were more severe than average.

**Significant Factors:**

There are too few cases to identify any common contributing factors.

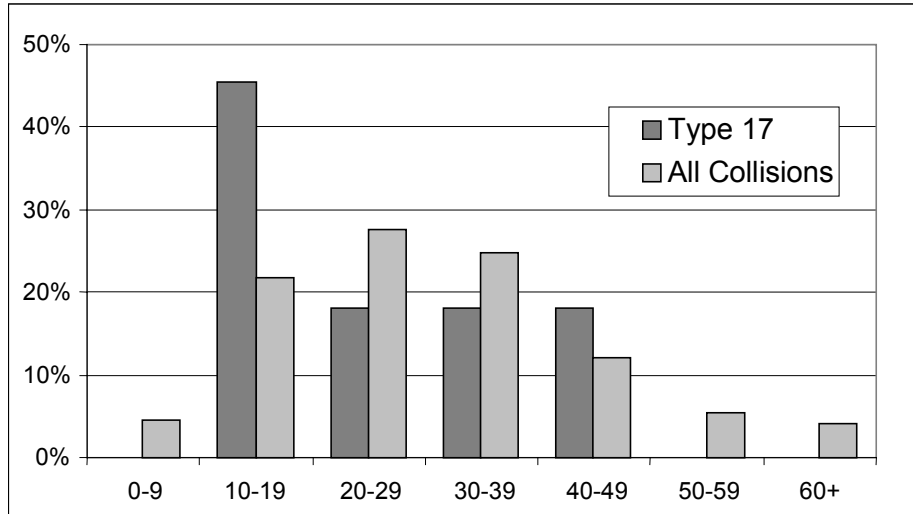
**Environmental Conditions:**

All of the collisions of this type occurred in clear weather, with dry road conditions. Only one incident occurred in darkness.

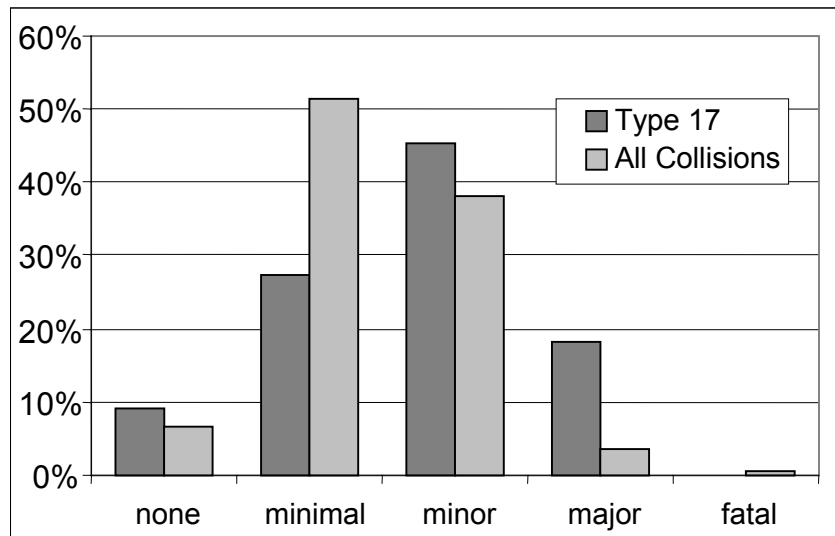
**Note:** The small number of cases limits the confidence of statistical statements about this type of crash.

## Type 17: Cyclist Left Turn – Facing Motorist

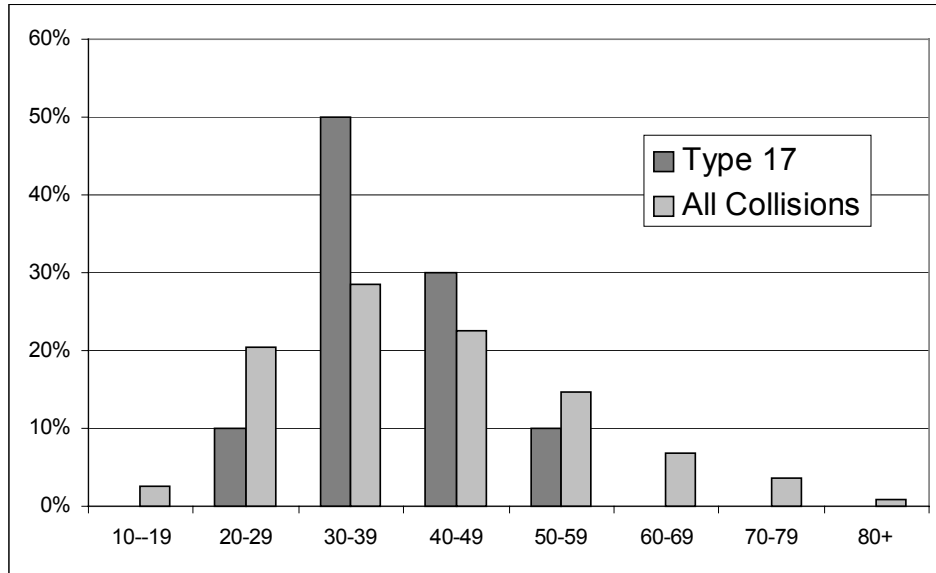
### Cyclist's Age



### Cyclist's Injuries



### Driver's Age



### Cyclist Left Turn Facing Motorist 11 Collisions

