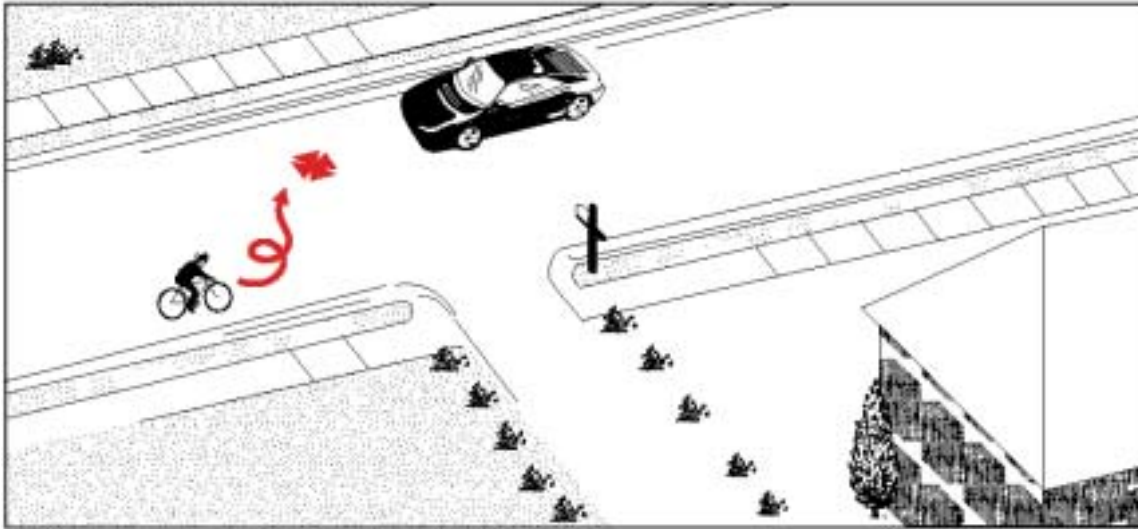


Type 18:

Cyclist Lost Control

Frequency:	44 cases; 1.9% of all collisions
Severity:	2 major injuries (5%) No fatalities



Description: The cyclist lost control and, as a result, came into collision with a motor vehicle.

Summary: This type of collision involved mainly young cyclists, especially children under 10. Resulting injuries appear more severe than average. Drivers in their twenties seem to be under-represented.

Environmental Conditions: Weather and light conditions do not appear to have been factors in these collisions.

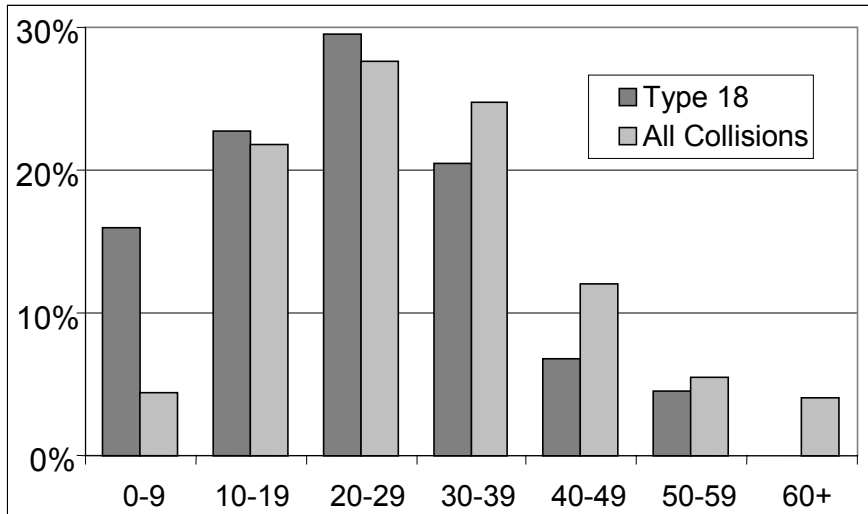
Note: The small number of cases reduces the confidence of some statements about this type of crash.
--

Other Significant Factors:

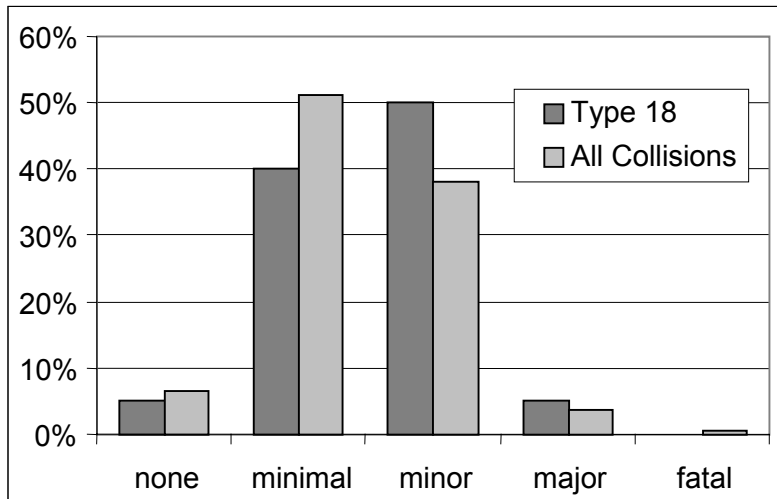
	Type 18	All Collisions
Child cyclist	21%	5.7%
Streetcar tracks	21%	0.6%
Mechanical defect	11.4%	0.6%
Cyclist's path obstructed	9.1%	0.7%

Type 18: Cyclist Lost Control

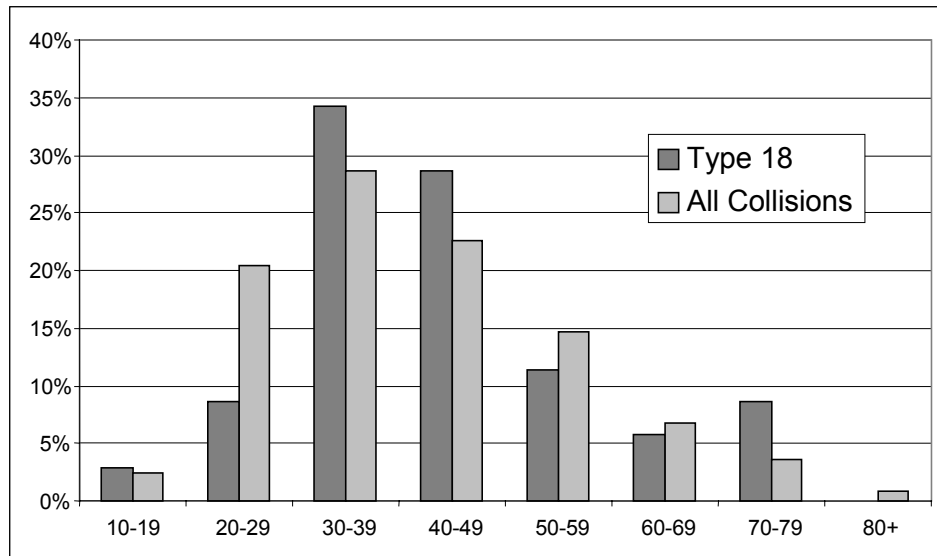
Cyclist's Age



Cyclist's Injuries



Driver's Age



Cyclist Lost Control 44 Collisions

