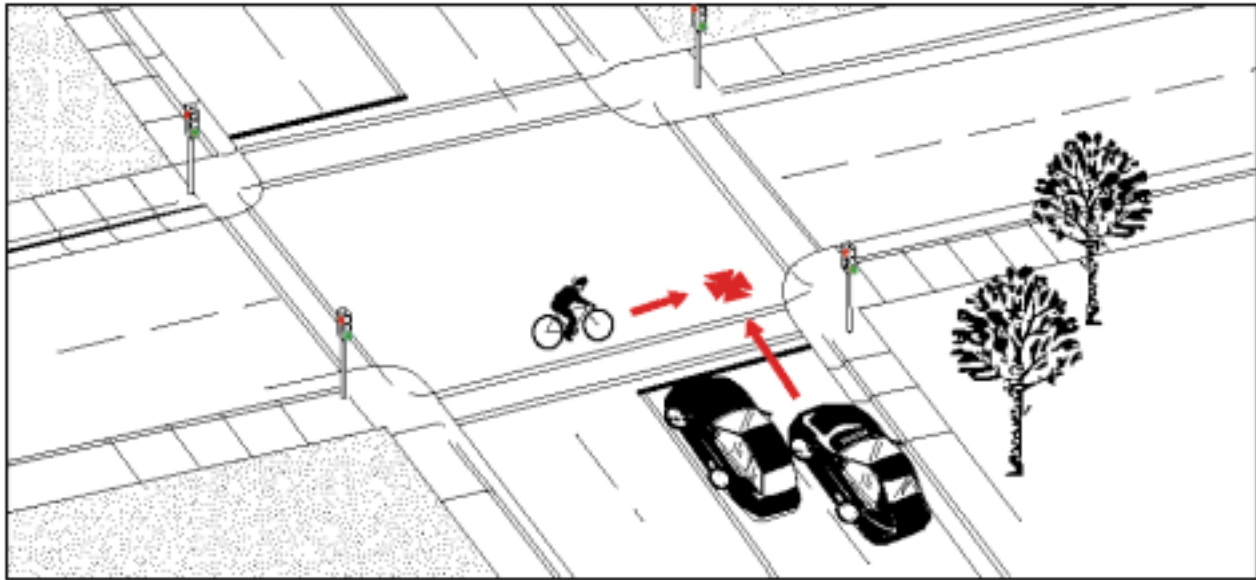


Type 19:

**Frequency:** 30 cases; 1.3% of all collisions

**Severity:** No major injuries or fatalities

# Cyclist Caught in Intersection



**Description:** The cyclist was traversing an intersection when the traffic signal changed to red. A motorist proceeding on the green light then struck the cyclist.

**Environmental Conditions:** There were too few cases to determine if weather and light conditions were factors in these collisions.

**Summary:** In comparison to all crashes, this type tended to involve more young cyclists (under age 15). Resulting injuries were generally much less severe than average. Drivers in their twenties appear to be over-represented.

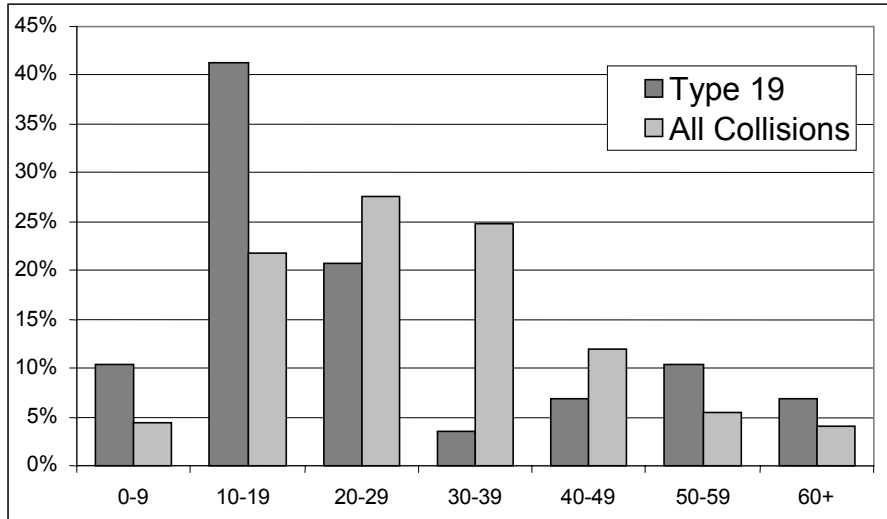
**Note:** The small number of cases may reduce the confidence of some statements about this type of crash.

**Other Significant Factors:**

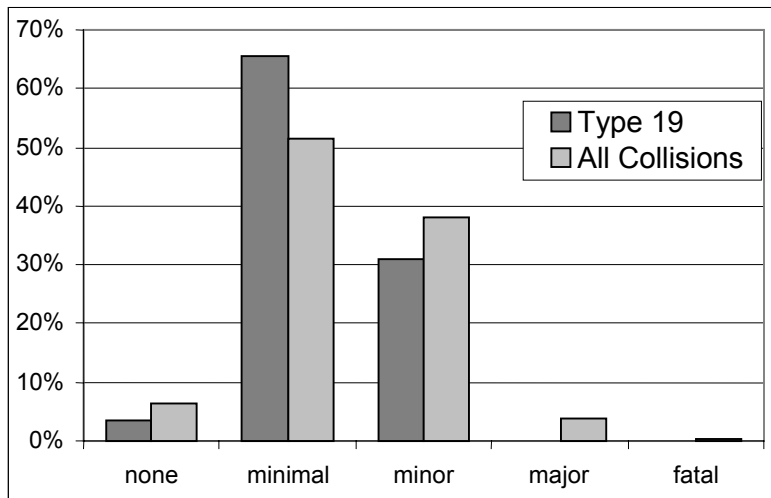
	<b>Type 19</b>	<b>All Collisions</b>
Child cyclist	20%	5.7%
Darkness	17.2%	14.9%
Cyclist disobeying traffic control	10%	1.9%
Sight lines obstructed	6.7%	3.1%

## Type 19: Cyclist Caught in Intersection

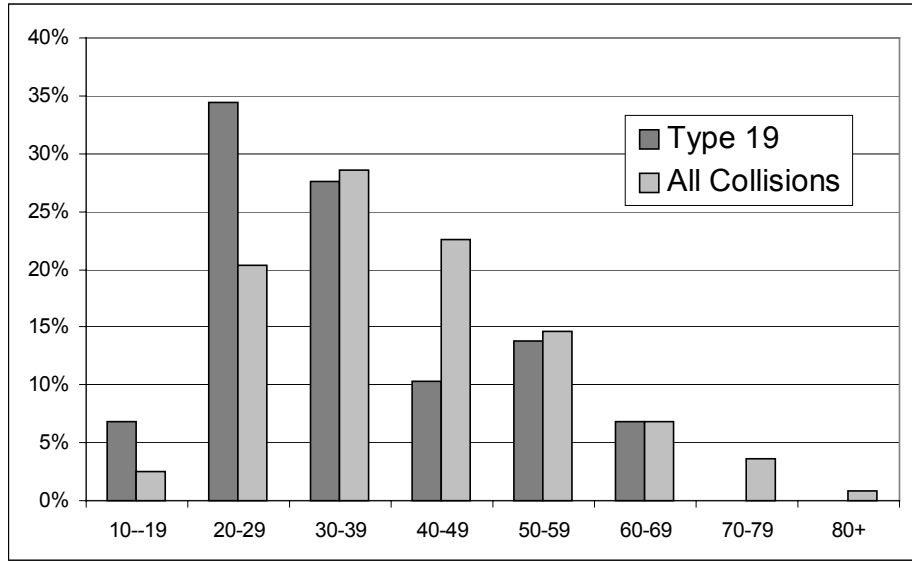
### Cyclist's Age



### Cyclist's Injuries



### Driver's Age



### Cyclist Caught in Intersection 30 Collisions

