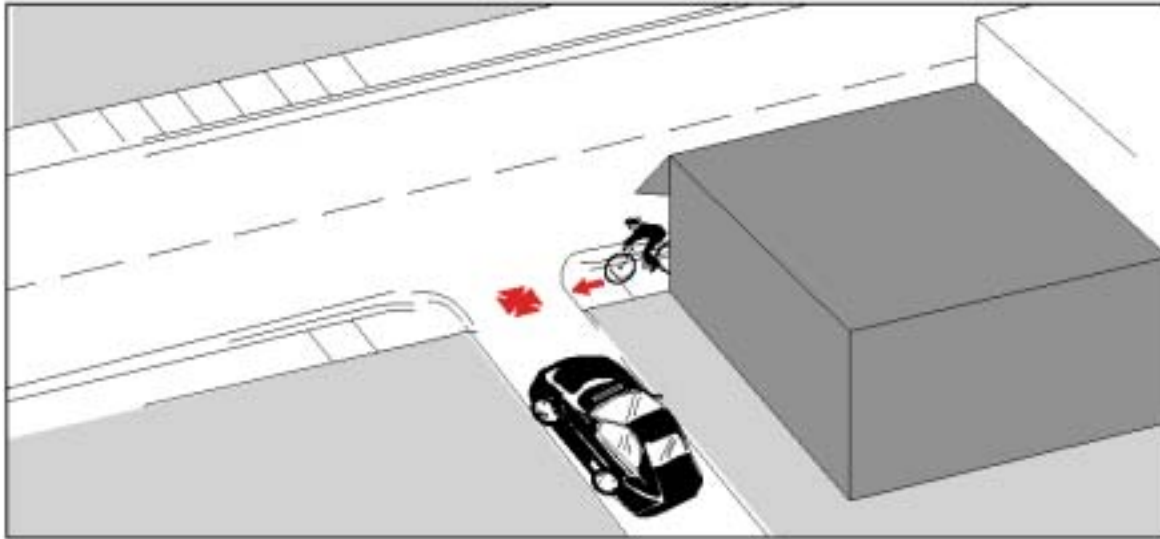


Type 2:

Drive Out From Lane or Driveway

Frequency: 179 cases; 7.7% of all collisions
Severity: 2% resulted in major injuries
 No fatalities



Description: The motorist was emerging onto the roadway from a private or commercial driveway, or a lane. While the motorist may have been initiating a turn, this could not be determined conclusively from the MVA report.

Summary: In comparison to all collisions, this type tended to involve more young cyclists (ages 10 to 19). Resulting injuries were generally less severe than average. Drivers age 40-55 and 70-80 were over-represented.

Environmental Conditions:

Daylight 90%
 Clear Weather 95%
 Dry Road Surface 95%

Poor weather and light conditions were not frequent factors in this type of collision.

Geographic Distribution:

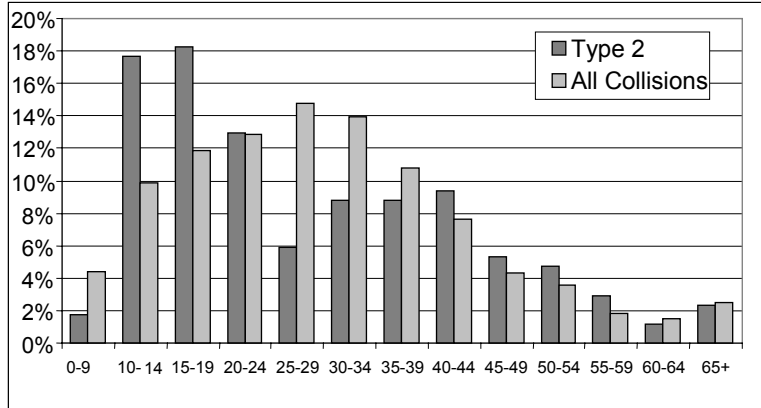
No central concentration, *i.e.*, relatively more frequent in outer areas of the City.

Other Significant Factors:

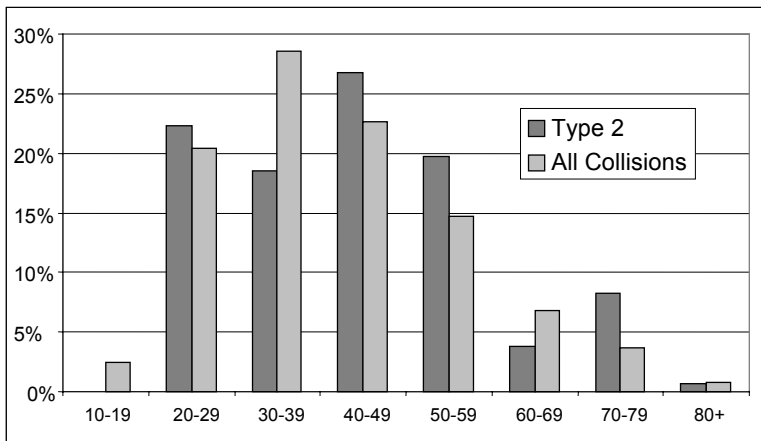
	Type 2	All Collisions
Cyclist riding on sidewalk	81%	30.6%
Child cyclist	6.1%	5.7%
Sight lines obstructed	4.5%	3.1%

Type 2: Drive-Out from Lane or Driveway

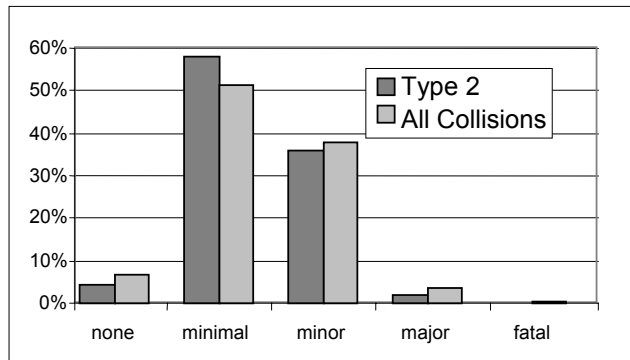
Cyclist's Age



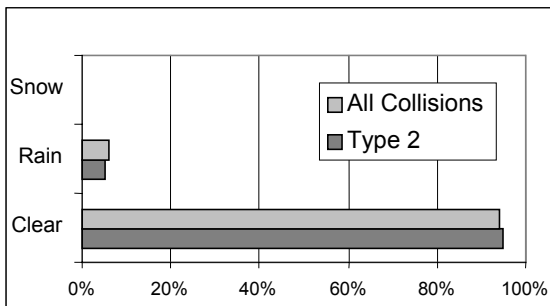
Driver's Age



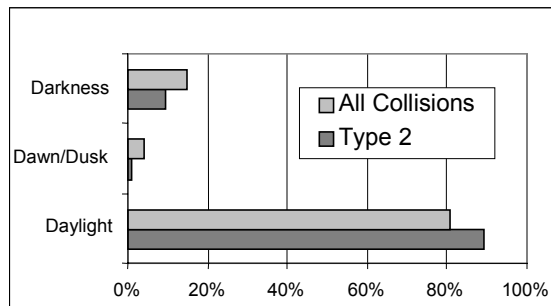
Cyclist's Injuries



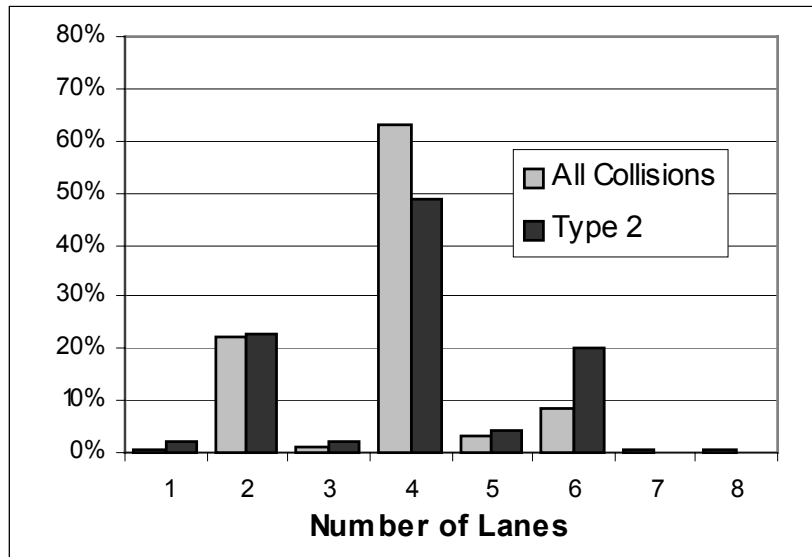
Weather Conditions



Light Conditions



Number of Lanes



Drive Out from Lane or Driveway 179 Collisions

