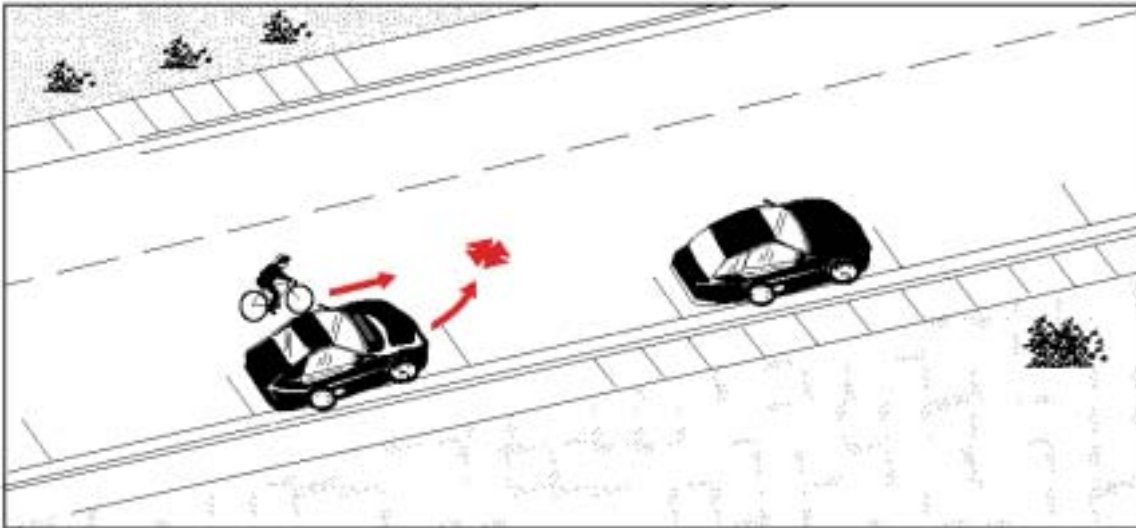


Type 21:

Frequency: 28 cases; 1.2% of all collisions
Severity: No major injuries or fatalities

Drive Into or Out of On-Street Parking



Description: The motorist was entering or exiting an on-street parking spot.

Summary: This type of collision involved mostly adult cyclists, age 20 to 30. Resulting injuries were generally less severe than average.

Environmental Conditions: Poor weather and road conditions do not appear to be significant factors in these crashes.

Geographic Distribution: Almost all occurred in central areas.

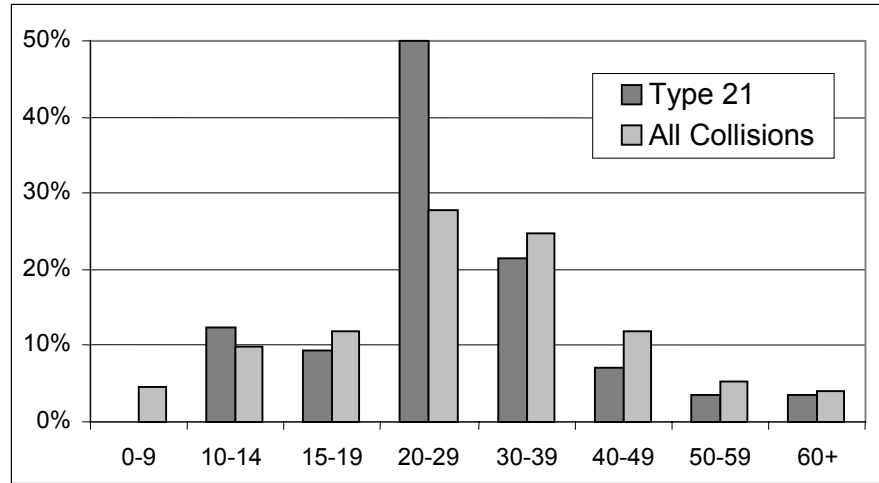
Note: The small number of cases may reduce the confidence of some statements about this type of crash.

Other Significant Factors:

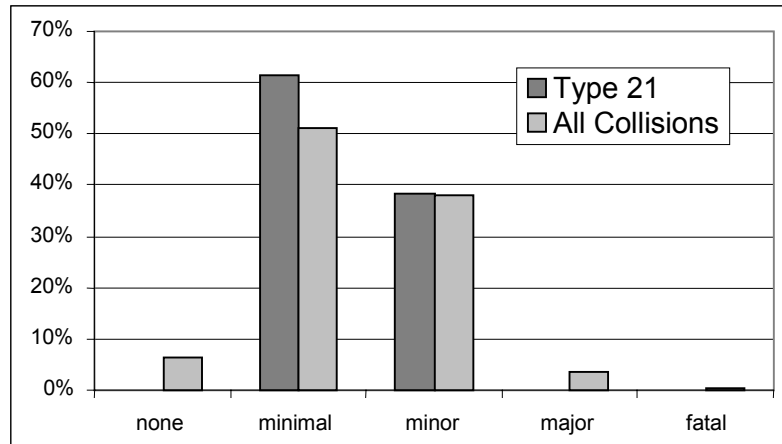
	Type 21	All Collisions
Darkness	32%	14.9%
Motorist improper/unsafe lane change	14.3% (4 cases)	2.9%

Type 21: Drive Into/Out of On-Street Parking

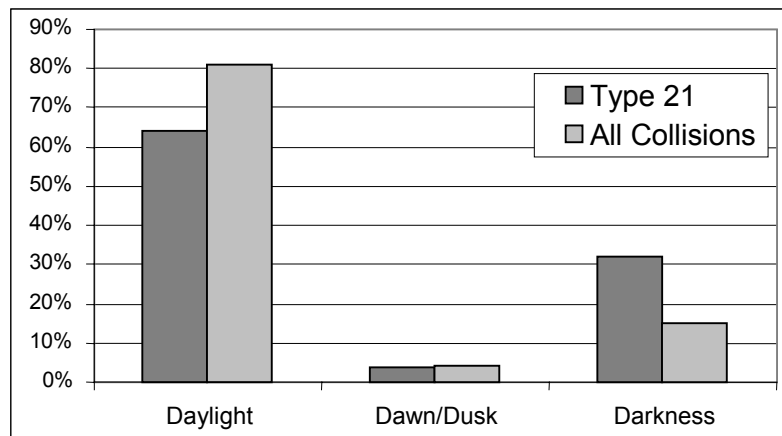
Cyclist's Age



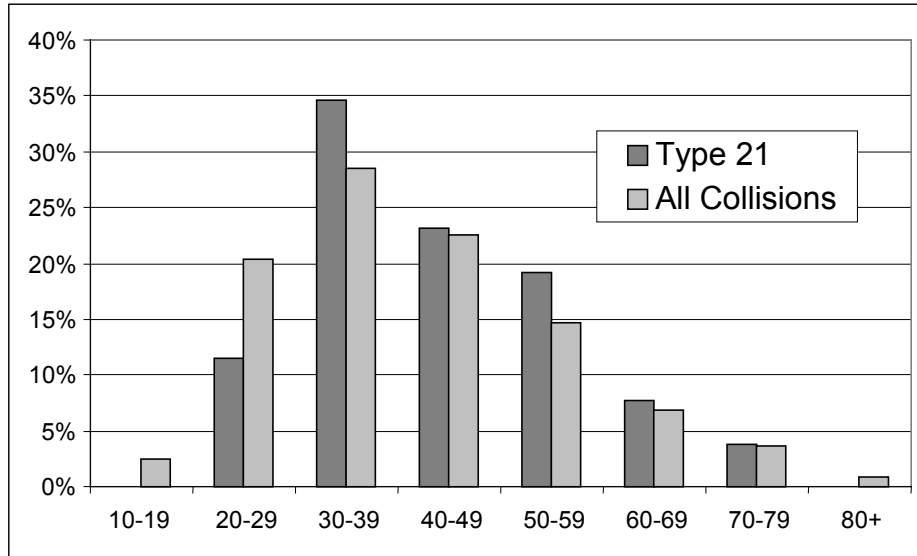
Cyclist's Injuries



Light Conditions



Driver's Age



Drive Into/Out of On-Street Parking 28 Collisions

