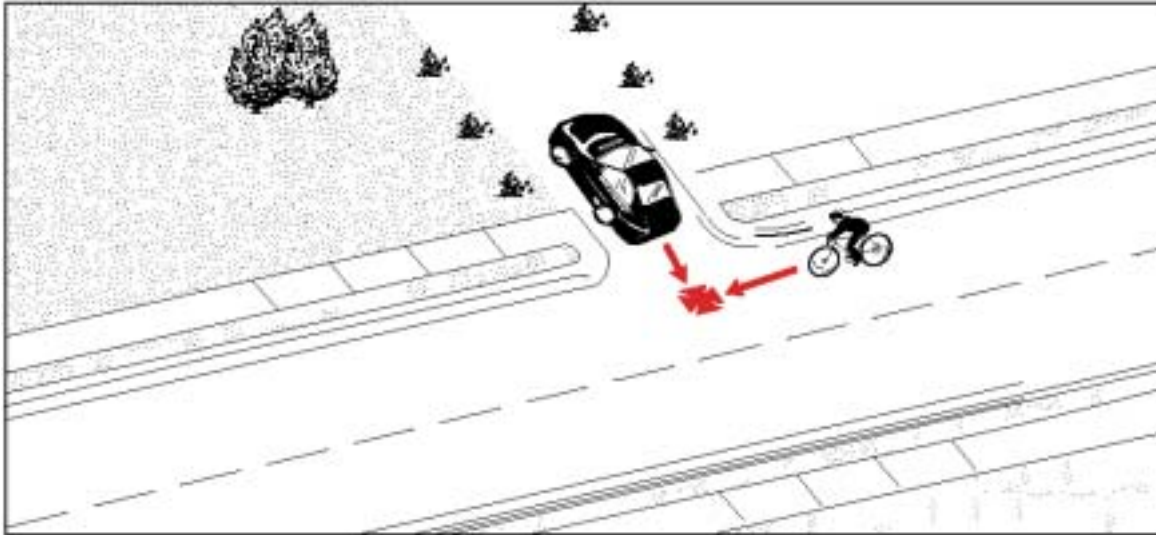


Type 3:

Motorist Reversing

Frequency: 37 cases; 1.6% of all collisions
Severity: No major injuries or fatalities



Description: The motorist was backing up, often on a private driveway (crossing a sidewalk) or in a parking lot.

Environmental Conditions: Clear weather, all known cases. Three occurred in darkness.

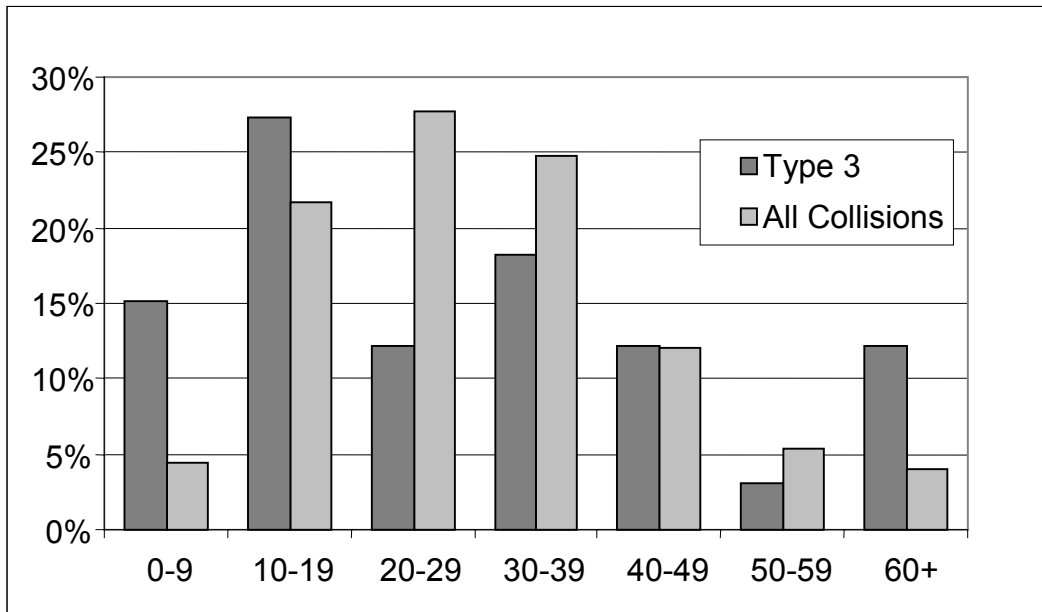
Summary: Cyclists under 15 seem to be more frequently involved in this type of collision, as do those over 65. Resulting injuries were generally less severe than the overall average. Drivers age 50-60 were apparently over-represented.

Note: The small number of cases limits the confidence of some statements about this type of crash.

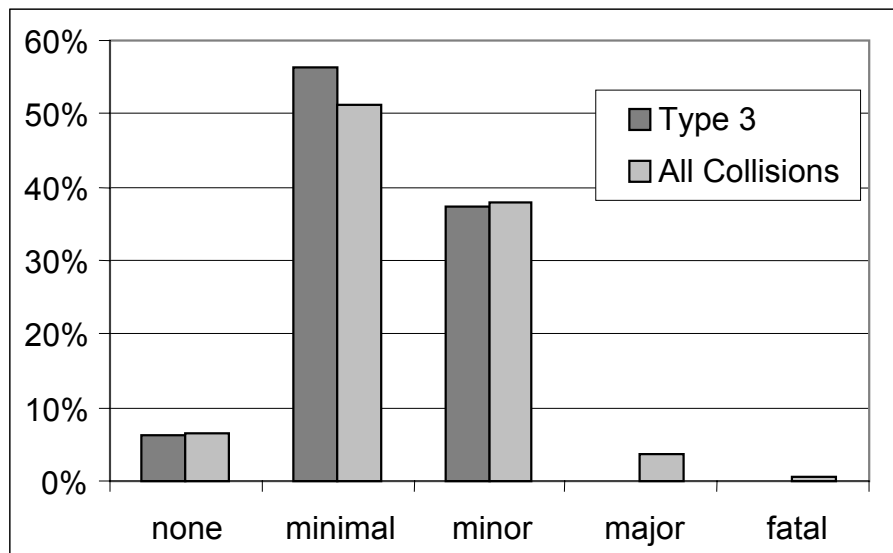
Other Significant Factors:	Type 3	All Collisions
Cyclist riding on sidewalk	45.9% (17 cases)	30.6%
Child cyclist	15.2% (5 cases)	5.7%
Sight lines obstructed	5.4% (2 cases)	3.1%

Type 3: Motorist Reversing

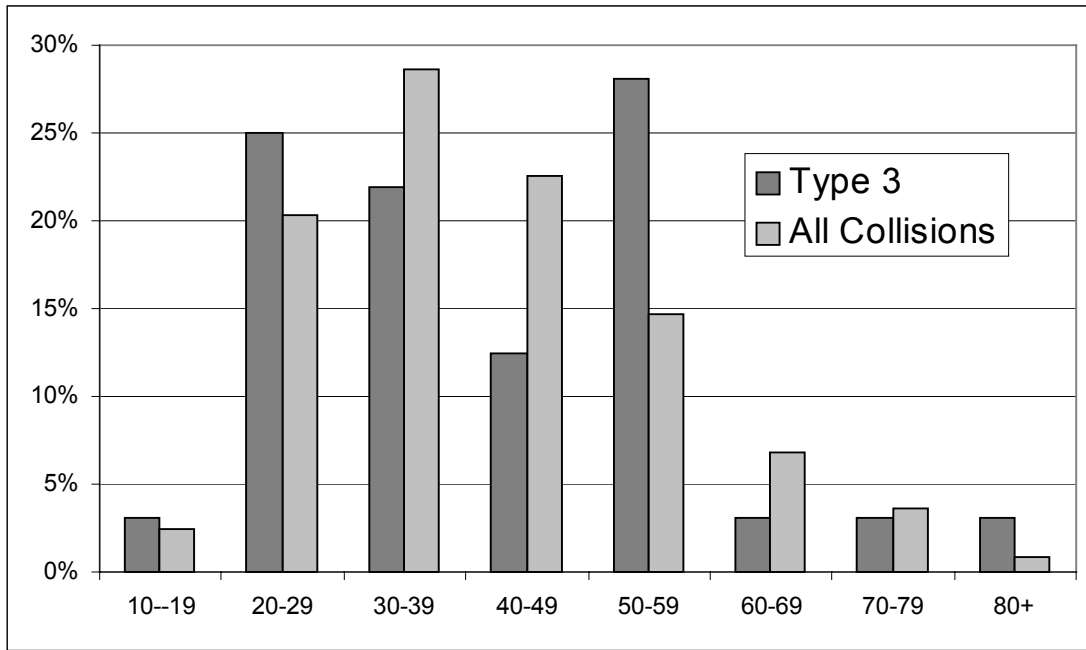
Cyclist's Age



Cyclist's Injuries



Driver's Age



Motorist Reversing 37 Collisions

