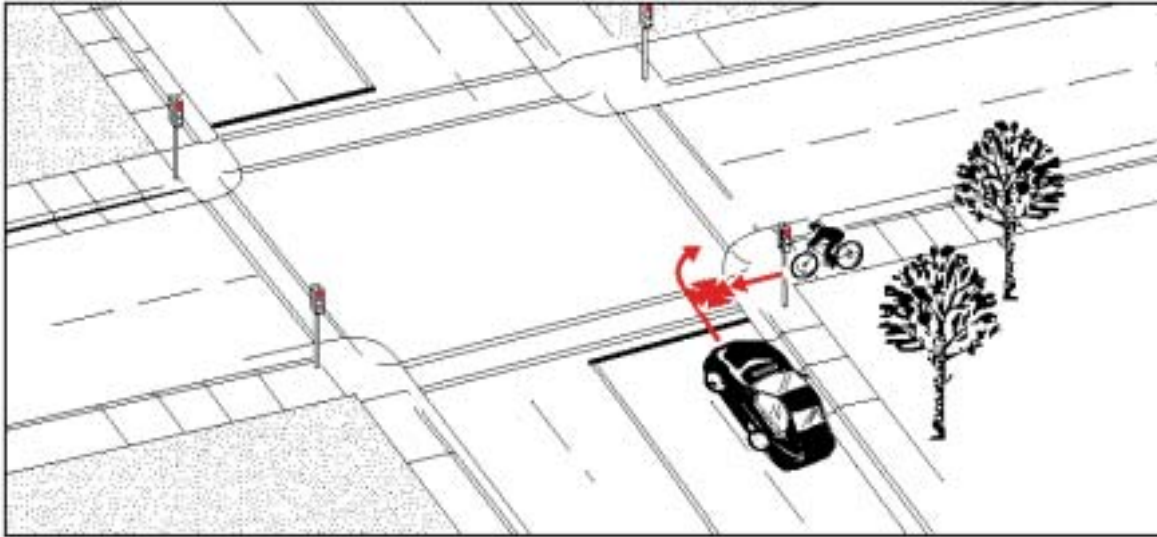


Type 4:

Frequency:	179 cases; 7.7% of all collisions
Severity:	2.5% resulted in major injuries No fatalities

Motorist Right Turn at Red Light



Description: The motorist was executing a right turn at a red light. The cyclist was most often crossing the road from the motorist’s right, within the crosswalk. Cyclists were riding on the road, in the direction of traffic, in only 11% of these collisions, compared to 71% overall.

Summary: In comparison to all crashes, this type tended to involve more young cyclists (ages 11 to 20) and seniors (over age 57). Resulting injuries were generally less severe than average, probably because motor vehicle speeds were typically low.

Environmental Conditions: Wet roads and rainy weather were significantly over-represented in this crash type. Reduced visibility may have been a problem, especially for motorists (foggy windows). Reduced braking ability could have been a problem, especially for cyclists.

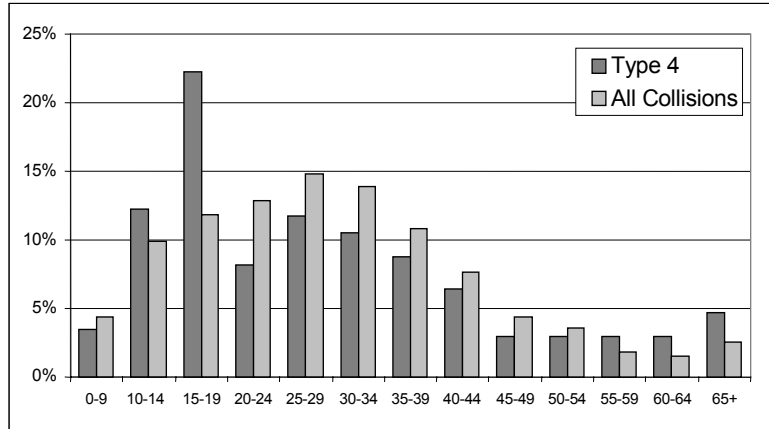
Darkness was not a frequent factor.

Geographic Distribution: Very slight central concentration, *i.e.*, relatively more frequent in outer areas.

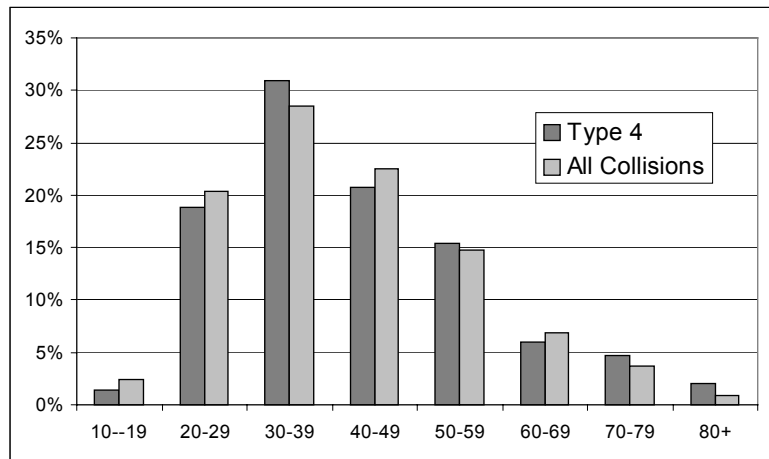
Other Significant Factors:	Type 4	All Collisions
Cyclist riding on sidewalk/crosswalk	86%	30.6%
Wet road surface	13.2%	7.9%
Rainy weather	8%	5.9%
Cyclist on road, riding against traffic	3.4%	1.8%

Type 4: Motorist Right Turn at Red Light

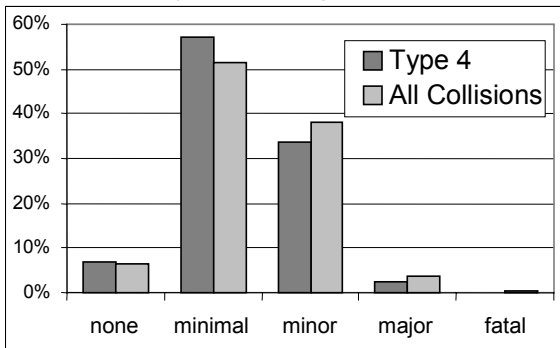
Cyclist's Age



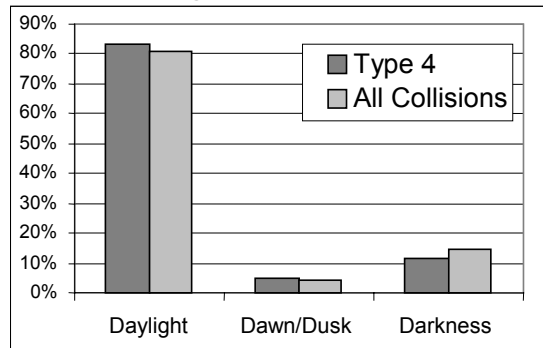
Driver's Age



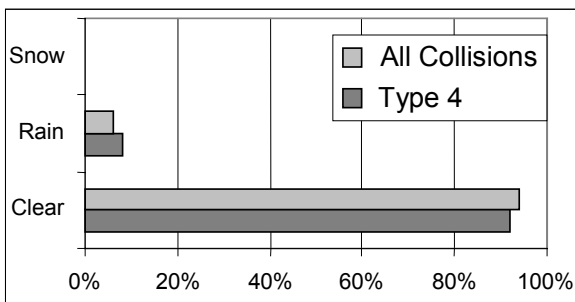
Cyclist's Injuries



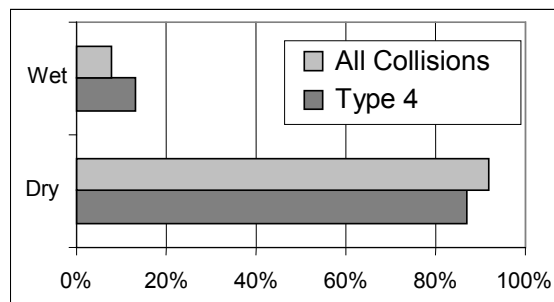
Light Conditions



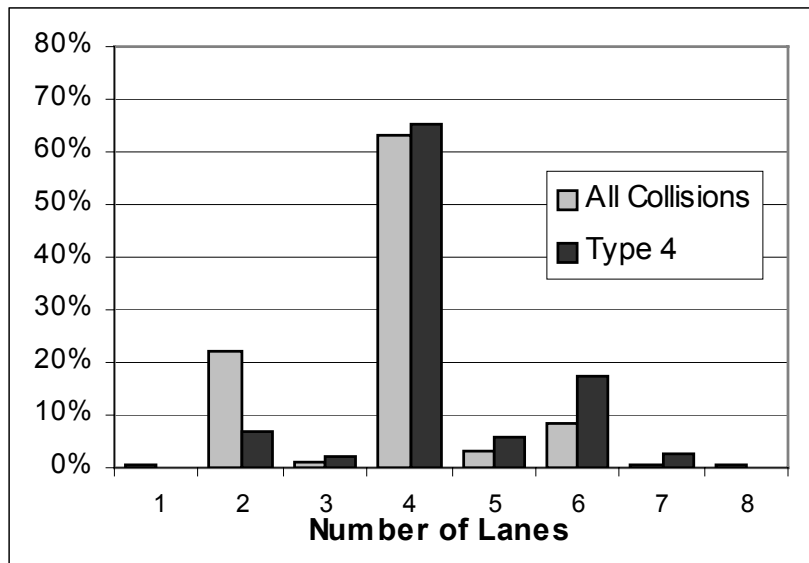
Weather Conditions



Road Surface Conditions



Number of Lanes



Motorist Right Turn at Red Light 179 Collisions

