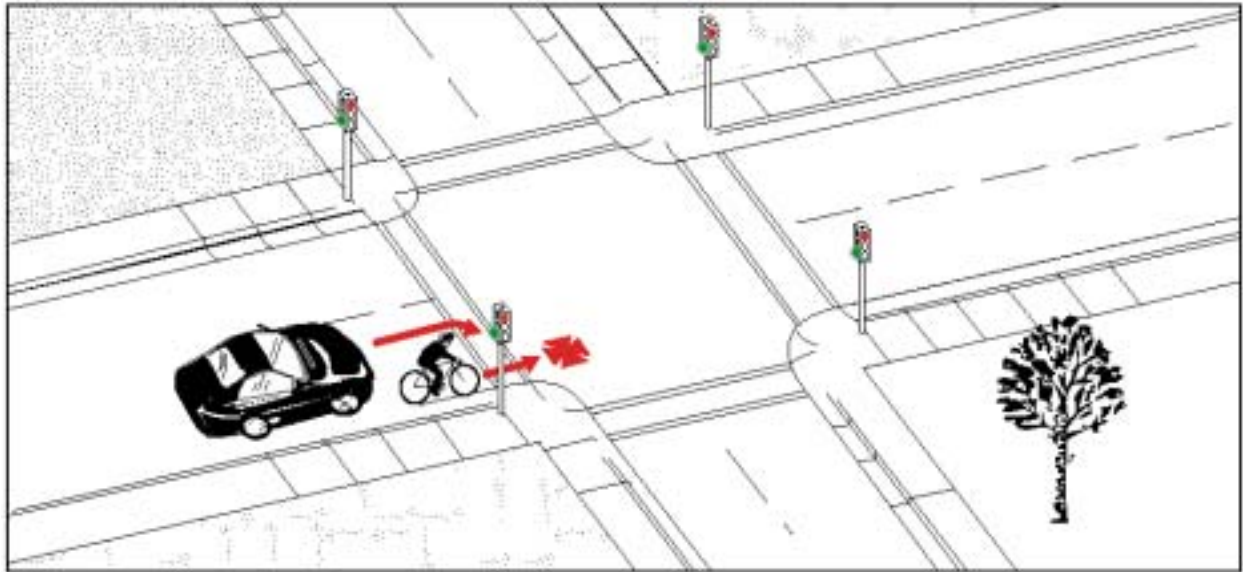


Type 5:

# Motorist Right Turn - Other

**Frequency:** 224 cases; 9.6% of all collisions  
**Severity:** 1.4% resulted in major injuries  
 No fatalities



**Description:** The motorist was making a right turn. The cyclist was usually riding in the same direction on the road, but in over a third of cases the cyclist was on the sidewalk, entering the crosswalk.

**Summary:** This type of crash tended to involve slightly more young cyclists (ages 15 to 19) than all crashes combined. Resulting injuries were generally much less severe than average. Drivers in their thirties seem to be under-represented.

**Traffic Control:**

No Control	47%
Traffic Signal	39%
Stop Sign	12%
Ped. Cross-Over	1%

**Environmental Conditions:**  
 Not a frequent factor.

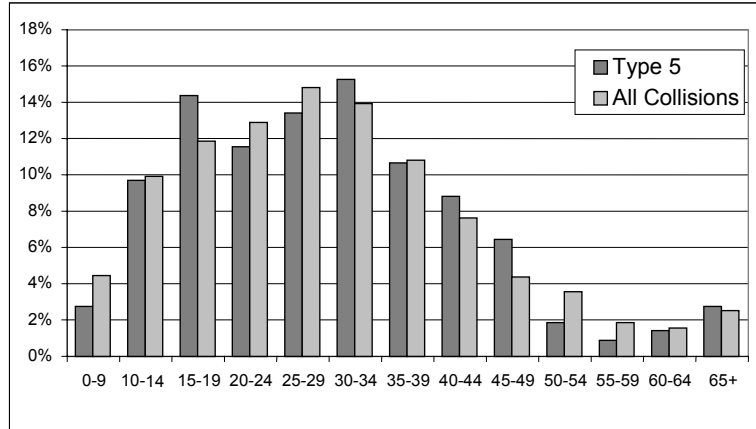
**Geographic Distribution:**  
 More frequent in central areas.

**Other Significant Factors:**

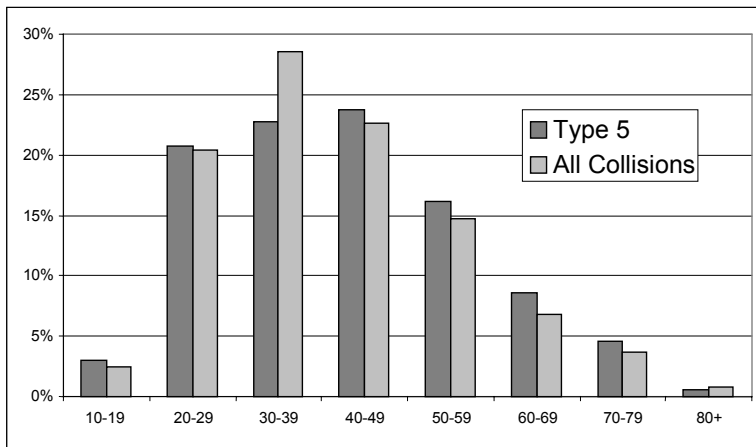
	Type 5	All Collisions
Cyclist riding within crosswalk	35%	30.6%
Cyclist overtaking on the right	3.6%	2.5%

## Type 5: Motorist Right Turn - Other

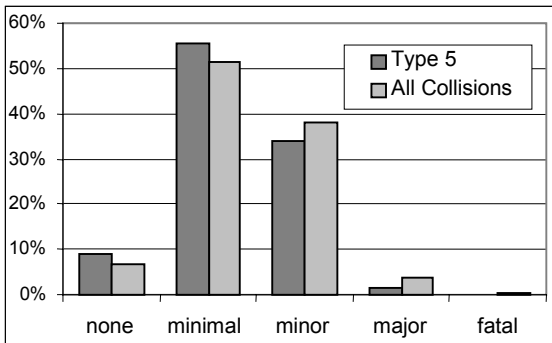
Cyclist's Age



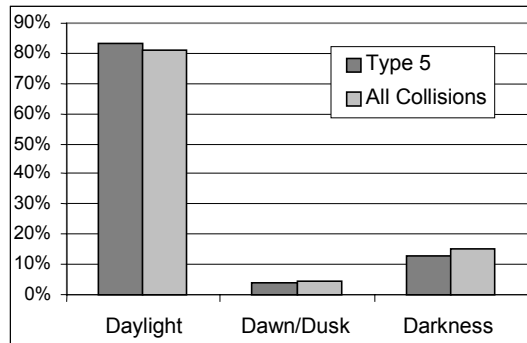
Driver's Age



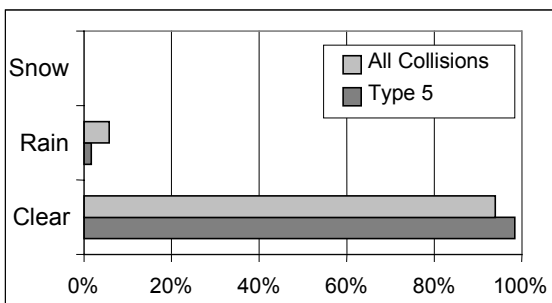
Cyclist's Injuries



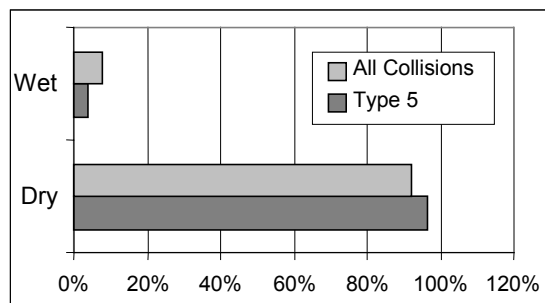
Light Conditions



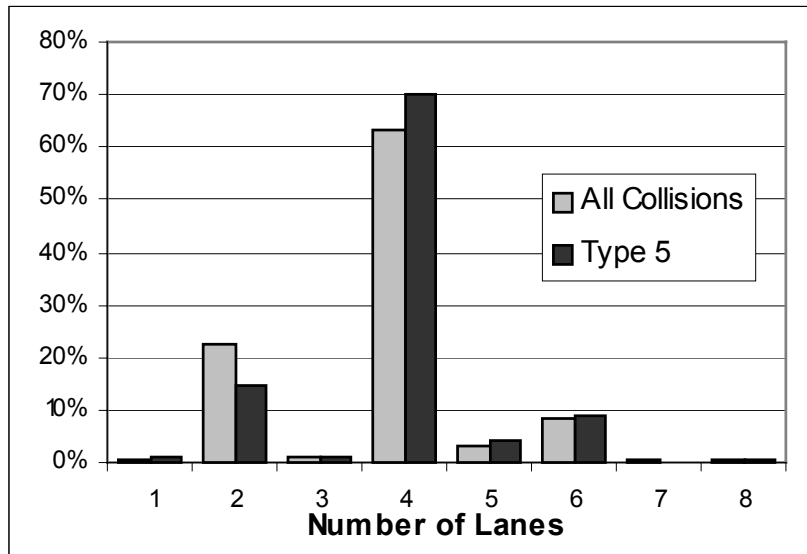
Weather Conditions



Road Surface Conditions



Number of Lanes



Motorist Right Turn – Other (Not at Red Light)  
221 Collisions

