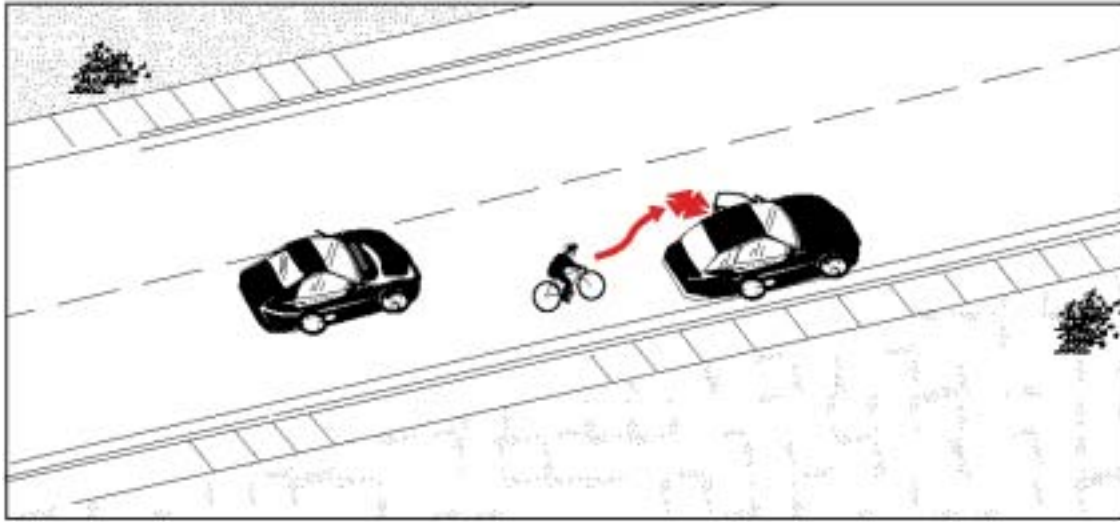


Type 6:

Frequency:	276 cases; 11.9% of all collisions
Severity:	3.1% resulted in major injuries 1 fatality

Motorist Opens Door in Path of Cyclist



Description: In this type of crash, the cyclist was riding alongside a stopped vehicle when the driver or passenger opened a vehicle door into the cyclist’s path.

Summary: Most of the cyclists involved in this type of collision were adults between 20 and 40 years of age. Resulting injuries were somewhat more severe than average. Light and weather conditions not appear to have been frequent contributing factors. Drivers in their thirties are over-represented.

Configuration :

Motorist in Curb Lane, <u>Cyclist Passing on Left:</u>	77%
Motorist in Curb Lane, <u>Cyclist Passing on Right:</u>	15%
Motorist in Centre Lane, <u>Cyclist Passing on Right:</u>	8%

Geographic Distribution:

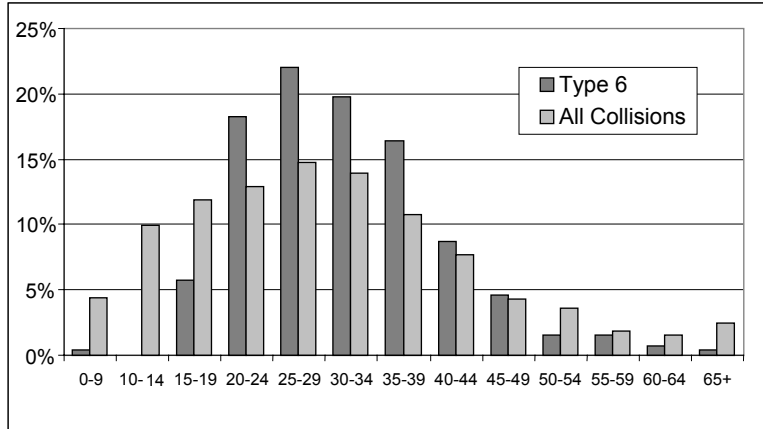
Almost exclusively concentrated in central areas of the City.

Other Significant Factors:

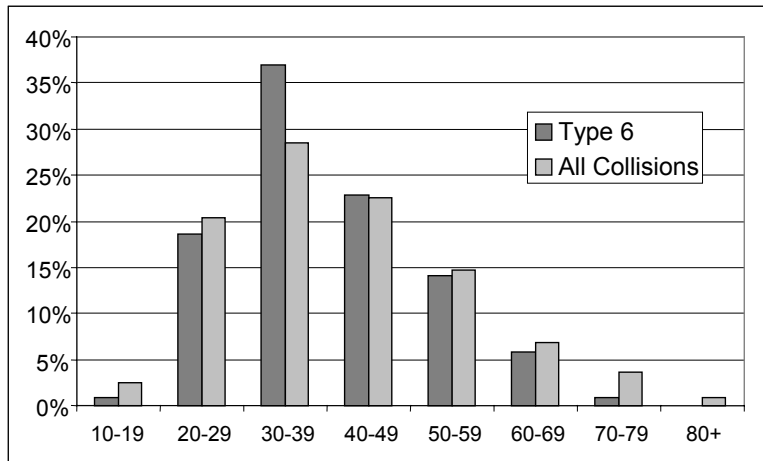
	Type 6	All Collisions
Cyclist passing on the right	15.6%	2.5%
Motorist discharging passenger in centre lane	7.6%	1.0%
Taxi	7.1%	3.1%

Type 6: Motorist Opens Door in Cyclist's Path

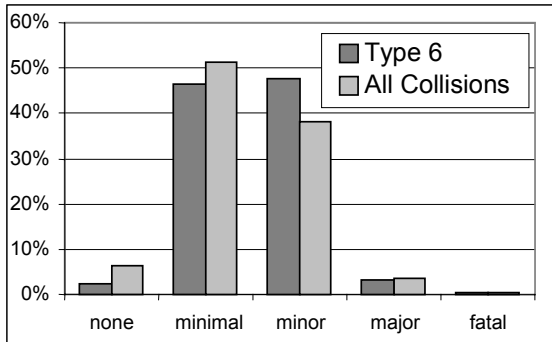
Cyclist's Age



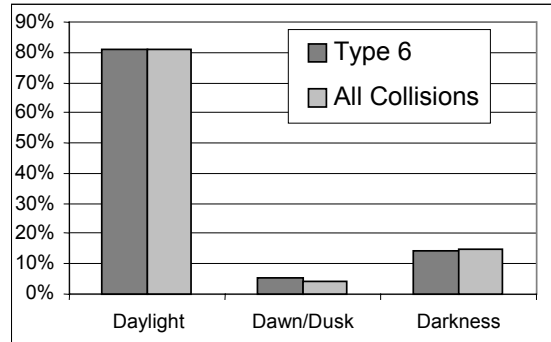
Driver's Age



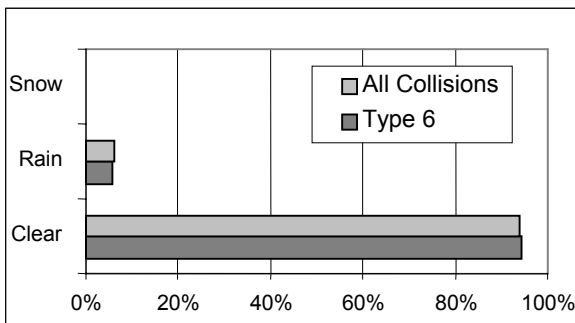
Cyclist's Injuries



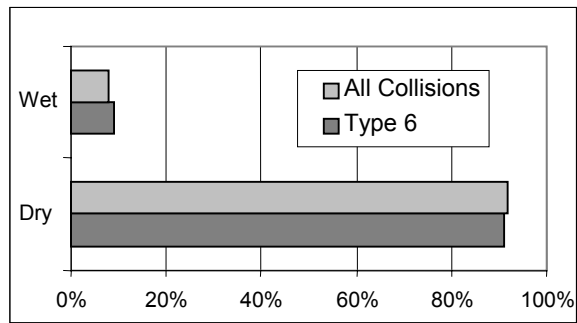
Light Conditions



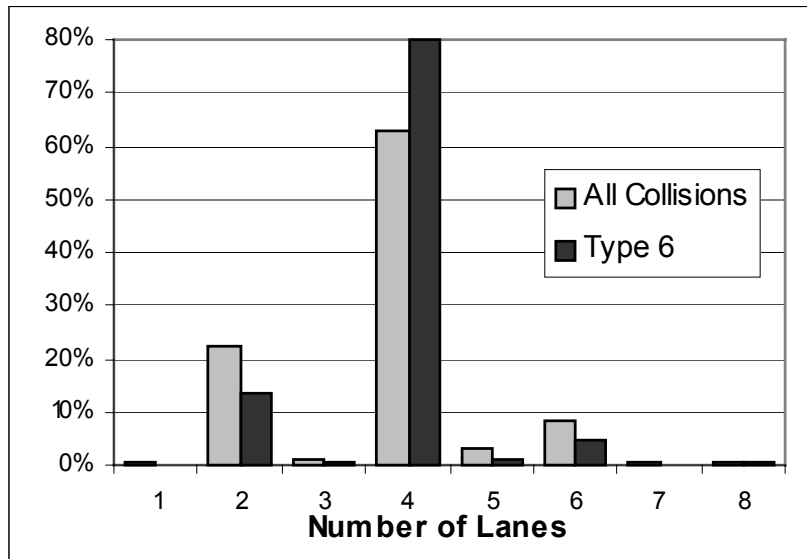
Weather Conditions



Road Surface Conditions



Number of Lanes



Motorist Opens Door in Cyclist's Path
275 Collisions

