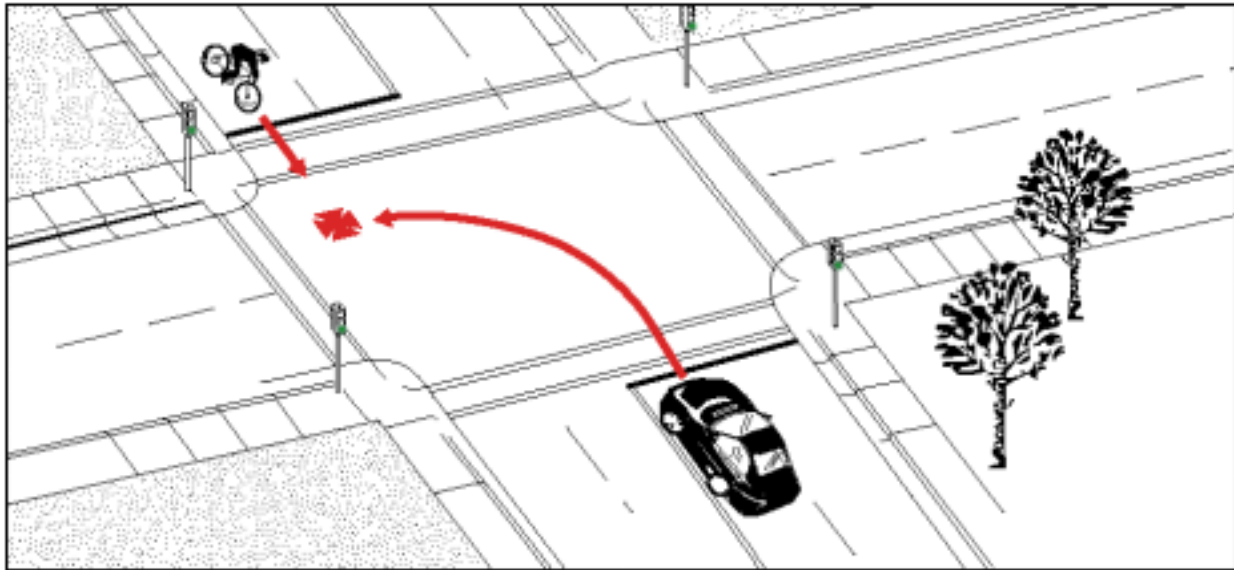


Type 8:

Frequency: 248 cases; 10.7% of all collisions
Severity: 4.8% resulted in major injuries
 No fatalities

Motorist Left Turn - Facing Cyclist



Description: The motorist made a left turn in front of a cyclist approaching from the opposite direction. Only 18% of the cyclists were riding on the sidewalk prior to the collision.

Traffic Control:

Traffic Signal	41.5%
No Control	39%
Stop Sign	18.5%
Ped. Cross-Over	1%

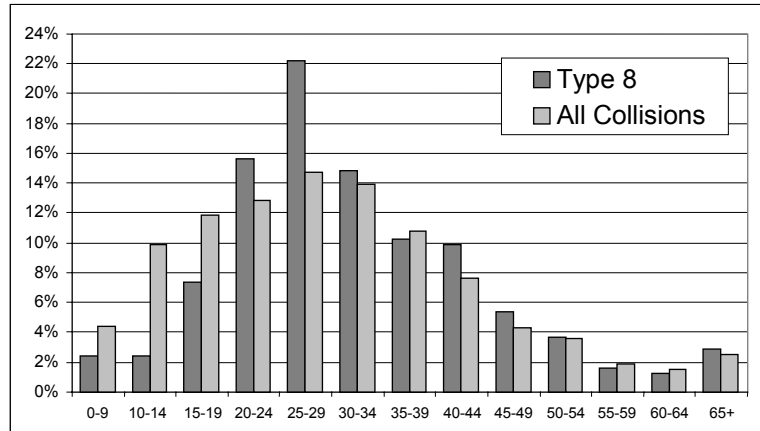
Summary: In comparison to all crashes, this type tended to involve more young adults (ages 20 to 30). Resulting injuries were often significantly more severe than average. Drivers over age 60 were over-represented.

Geographic Distribution:
 More frequent in central areas.

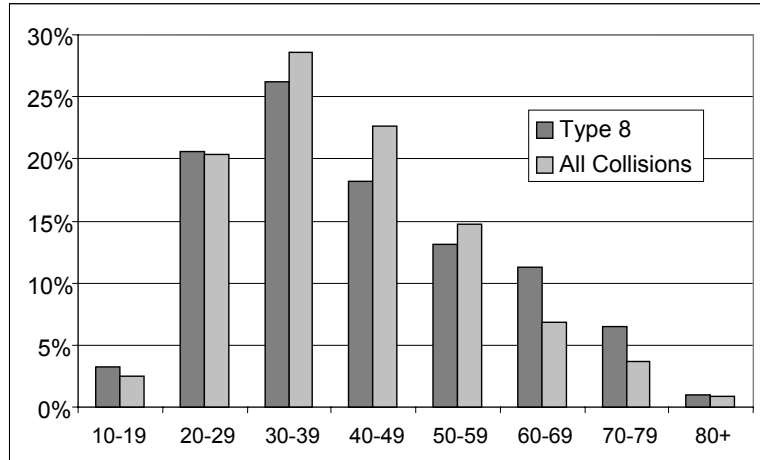
Other Significant Factors:	Type 8	All Collisions
Darkness	20.2%	14.9%
Sight lines obstructed	7.7%	3.1%
Motorist disobeyed traffic control	2%	1.6%

Type 8: Motorist Left Turn – Facing Cyclist

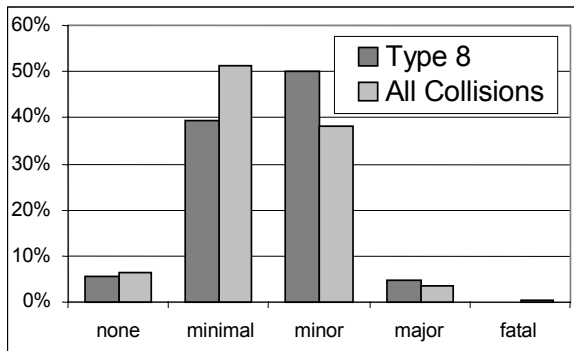
Cyclist's Age



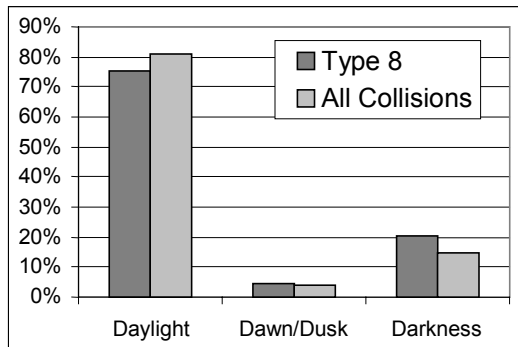
Driver's Age



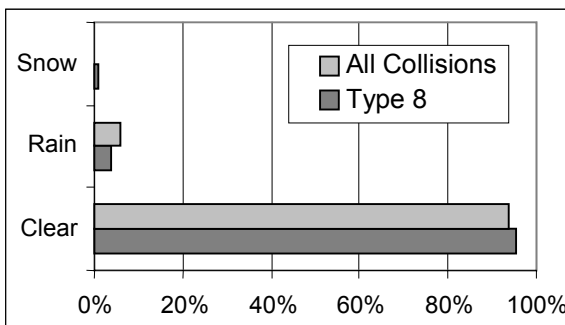
Cyclist's Injuries



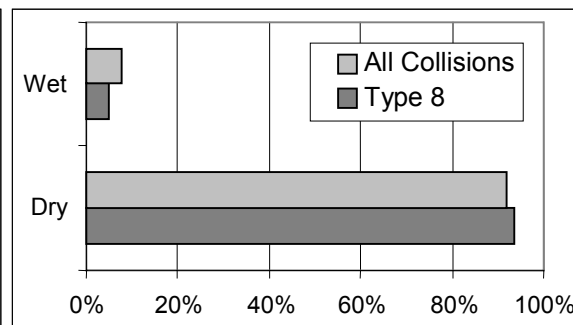
Light Conditions



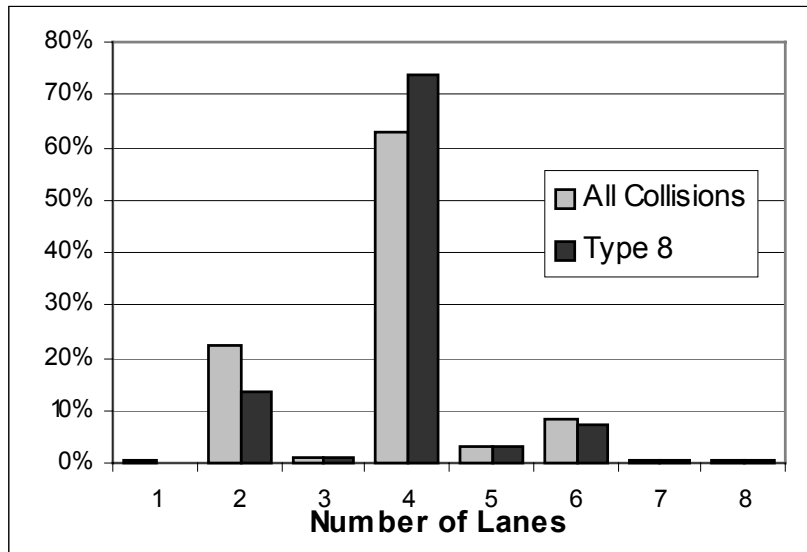
Weather Conditions



Road Surface Conditions



Number of Lanes



Motorist Left Turn – Facing Cyclist 248 Collisions

