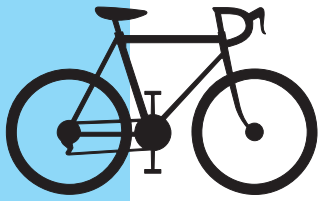


Traffic Safety Unit 2007

January 1 - December 31, 2007



Cyclist

Collision Summary

Leaflet - 2007



This leaflet presents an analysis of cyclist collisions for 2007 showing relevant facts and trends.

This leaflet includes reportable collisions involving cyclists in the City of Toronto.

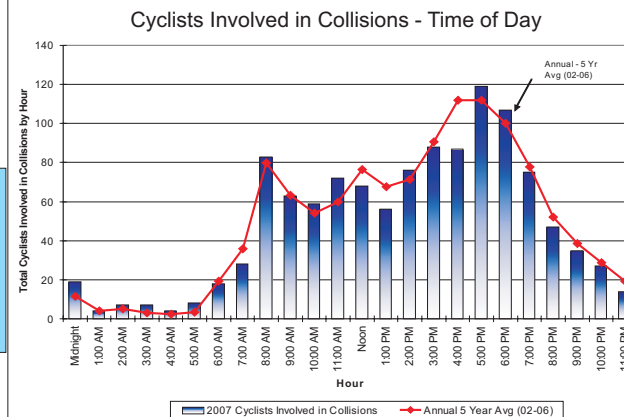
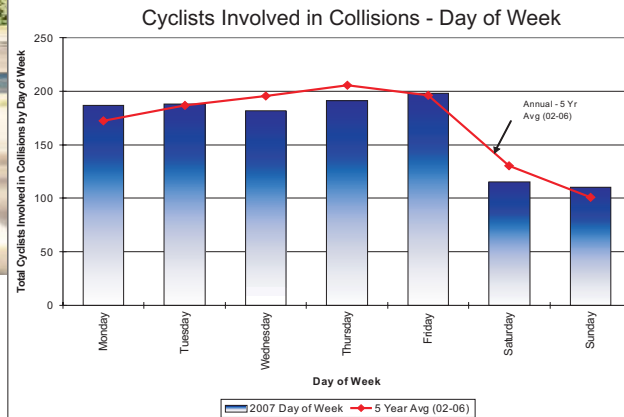
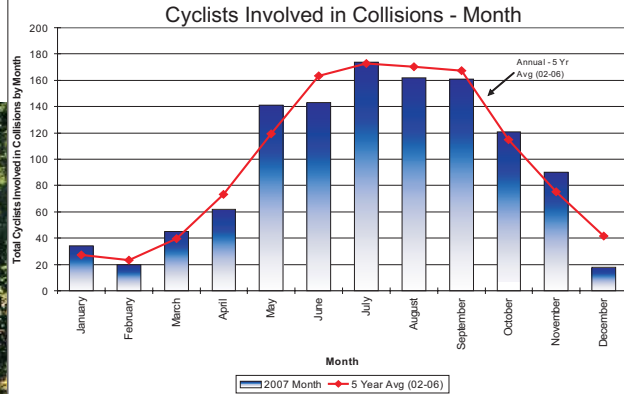
Fatal Collision: A death that has occurred within 366 days of the collision.



Transportation Services
Traffic Management Centre
Traffic Safety Unit

Cyclist Collisions - History

Year	Fatal	Injured	No Injury	Total
2002	2	1,099	180	1,281
2003	1	1,022	174	1,197
2004	3	1,015	158	1,176
2005	3	1,021	163	1,187
2006	3	954	141	1,098
2007	3	1,019	149	1,171
Total	15	6,130	965	7,110



Cyclists Involved in Collisions - Safety Equipment

Injury Severity	2007				5 Year Avg Wearing Helmet (02-06)
	Wearing Helmet	No Helmet	Use Unknown	Total	
No Injury	10	4	137	151	4
Minimal	161	287	118	566	129
Minor	138	191	85	414	94
Major	10	17	10	37	9
Fatal	1	0	2	3	1
Total	320	499	352	1,171	237

Cyclists Involved in Collisions - Road Surface Condition

Road Surface Condition	2007				5 Year Avg (02-06)
	Fatal	Injured	No Injury	Total	
Dry	3	912	134	1,049	1,061
Wet	0	98	13	111	110
Loose Snow	0	5	1	6	3
Slush	0	2	1	3	2
Other	0	2	0	2	9
Packed Snow	0	0	0	0	1
Ice	0	0	0	0	2
Loose Sand or Gravel	0	0	0	0	1
Total	3	1,019	149	1,171	1,188

Cyclists Involved in Collisions - Traffic Control

Control Type	2007			5 Year Avg (02-06)	
	Fatal	Injured	No Injury		
Traffic Signal	0	343	50	393	388
No Control	2	494	73	569	573
Stop Sign	0	169	25	194	205
Ped. Crossover	1	10	1	12	16
Yield Sign	0	2	0	2	2
Police Control	0	1	0	1	0
School Guard	0	0	0	0	0
Traffic Gate	0	0	0	0	0
Traffic Controller	0	0	0	0	2
Unknown or Blank	0	0	0	0	1
Total	3	1,019	149	1,171	1,188

Cyclists Involved in Collisions - Severity of Injury

Injury Severity	2007	5 Year Avg (02-06)
No Injury	151	164
Minimal	566	545
Minor	414	428
Major	37	48
Fatal	3	2
Total	1,171	1,188

Cyclists Involved in Collisions - Road Class

Age Group	Collector	Expressway	Local	Major Arterial	Minor Arterial	Private Property	Total
Not Stated	4	0	6	26	7	2	45
0-4 yrs	0	0	0	1	0	0	1
5-14 yrs	12	0	25	37	13	4	91
15-19 yrs	7	0	8	66	19	0	100
20-24 yrs	8	0	2	95	43	3	151
25-34 yrs	13	0	13	171	51	4	252
35-44 yrs	8	0	14	159	49	5	235
45-54 yrs	14	1	8	98	35	3	159
55-64 yrs	7	0	5	57	18	1	88
65+ yrs	4	0	6	26	10	3	49
Total	77	1	87	736	245	25	1,171

Cyclists Involved in Collisions - Age Group

Age Group	2007				5 Year Avg (02-06)
	Fatal	Injured	No Injury	Total	
0-4 yrs	0	23	2	25	30
5-14 yrs	1	83	7	91	126
15-19 yrs	0	86	14	100	117
20-24 yrs	0	134	17	151	126
25-34 yrs	0	202	26	228	237
35-44 yrs	1	218	16	235	236
45-54 yrs	1	139	19	159	142
55-64 yrs	0	83	5	88	67
65+ yrs	0	44	5	49	44
Unknown or Blank	0	7	38	45	62
Total	3	1,019	149	1,171	1,188

The collision information presented in the leaflet was summarized from Motor Vehicle Collision Reports obtained from the Toronto Police Service.

For more information call (416) 392-5210.

Driver Action - Cyclists Involved in Collisions, 2002-2007

Driver Action	2007				Annual 5 Yr Avg (02-06)
	No Injury	Injured	Fatal	Total	
Driving Properly	62	351	1	414	404
Failed to yield right-of-way	25	267	1	293	352
Other, Unknown or Blank	32	167	1	200	223
Improper turn	15	102	0	117	96
Improper passing	4	60	0	64	36
Disobey traffic control	2	29	0	31	32
Improper lane change	3	26	0	29	18
Following too close	4	4	0	8	12
Lost control	2	3	0	5	8
Speed too fast for condition	1	2	0	3	4
Wrong way on one-way road	0	3	0	3	2
Exceeding speed limit	1	1	0	2	2
Speed too slow	0	2	0	2	0
Total	151	1,017	3	1,171	1,188

Driver Condition - Cyclists Involved in Collisions, 2002-2007

Driver Condition	2007				Annual 5 Yr Avg (02-06)
	No Injury	Injured	Fatal	Total	
Normal	114	669	0	783	819
Inattentive	17	175	0	192	154
Unknown	9	126	1	136	130
Blank	9	40	0	49	70
Had been drinking	1	3	0	4	5
Other	1	3	0	4	5
Ability impaired, alcohol (over .08)	0	0	2	2	2
Ability impaired, alcohol	0	1	0	1	1
Ability impaired, drugs	0	0	0	0	0
Fatigue	0	0	0	0	1
Medical or physical disability	0	0	0	0	1
Total	151	1,017	3	1,171	1,188

Cyclist Collision Types (Ranked by frequency)

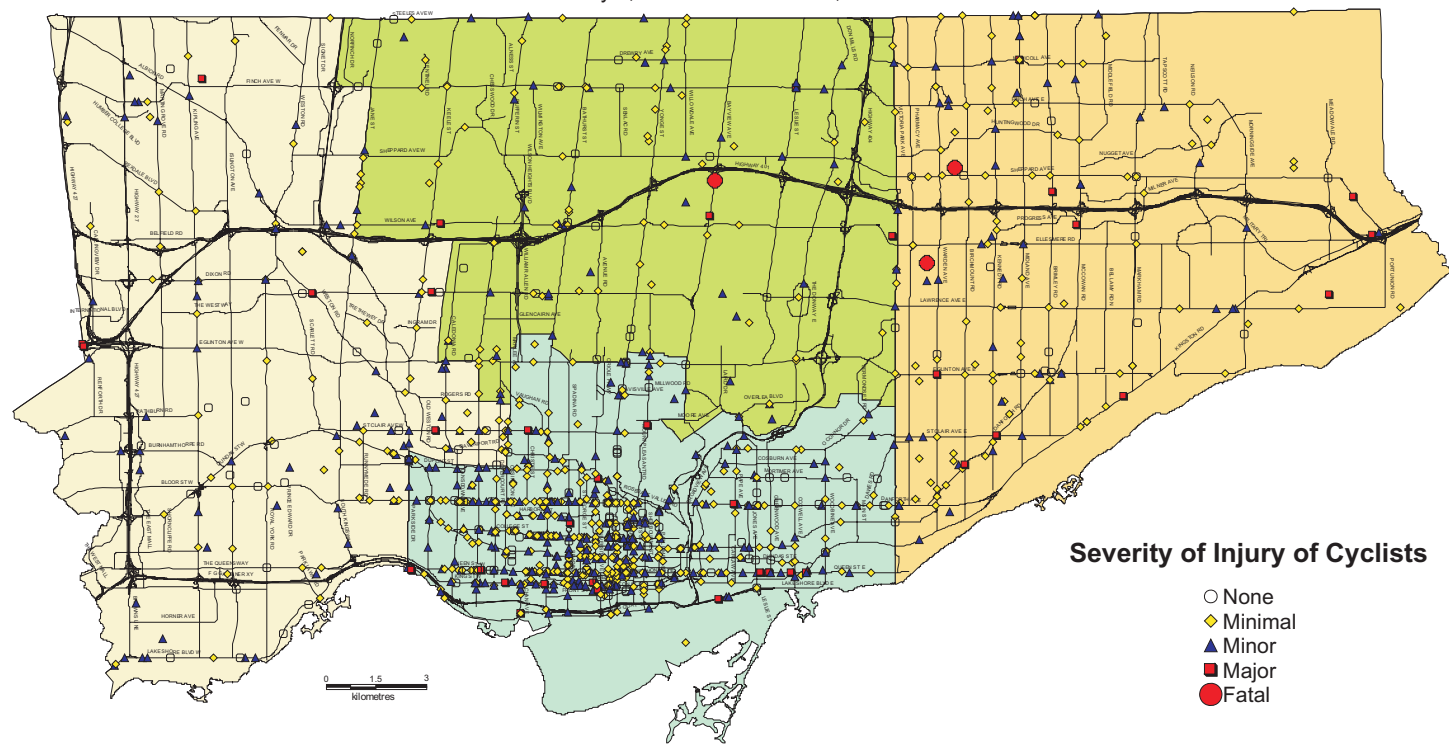
Collision Types	2007		Annual 2 Yr Avg (05-06) Collisions
	Cyclists	%	
Overtaking collisions ("side-swipe" or "rear-end")	255	22%	214
Motorist turned left	160	14%	139
Motorist opened vehicle door in Cyclist's path	143	12%	118
Motorist drove out at intersection, lane, or driveway, without yielding right-of-way	132	11%	147
Cyclist rode out at intersection, lane, or driveway, without yielding right-of-way	129	11%	150
Motorist turned right-not at red light	110	9%	102
Motorist turned right at red light	94	8%	67
Other	75	6%	119
Cyclist turned left	32	3%	31
Unknown (insufficient information available to categorise collision)	29	2%	48
Cyclist rode off sidewalk into road at mid-block	12	1%	11
Total	1,171	100%	1,143

Cyclist Collision Rate - Toronto compared to other Canadian Cities*

City	Population	Total Collisions	Collision Rate / 100,000 Population	Cyclist Collisions	Cyclist Collision Rate / 100,000 Population
Toronto	2,607,637	53,255	2,042	1,165	45
Montreal	1,854,442	36,797	1,984	NA	NA
Calgary	1,019,942	38,619	3,786	259	25
Ottawa	870,800	12,987	1,491	287	33
Edmonton	741,028	26,066	3,518	199	27
Winnipeg	665,028	14,726	2,214	230	35
Vancouver	578,041	2,637	456	229	40
Hamilton	504,559	3,174	629	146	29

* Most recent data available

Collisions Involving Cyclists, January 1, 2007 - December 31, 2007



Severity of Injury of Cyclists

- None
- ◆ Minimal
- ▲ Minor
- Major
- Fatal