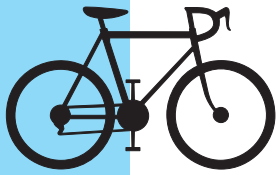


# Traffic Safety Unit 2008

January 1 - December 31, 2008



Cyclist

Collision Summary

Leaflet - December 2008



This leaflet presents an analysis of cyclist collisions to December 31, 2008 showing relevant facts and trends.

This leaflet includes reportable collisions involving cyclists in the City of Toronto.

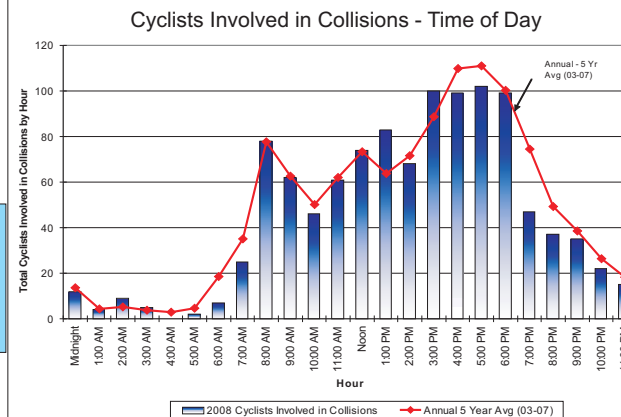
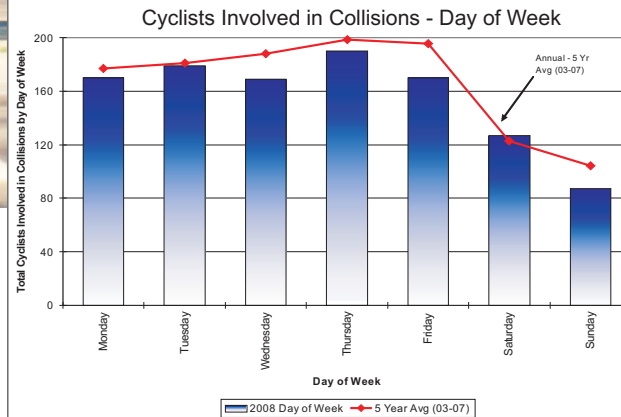
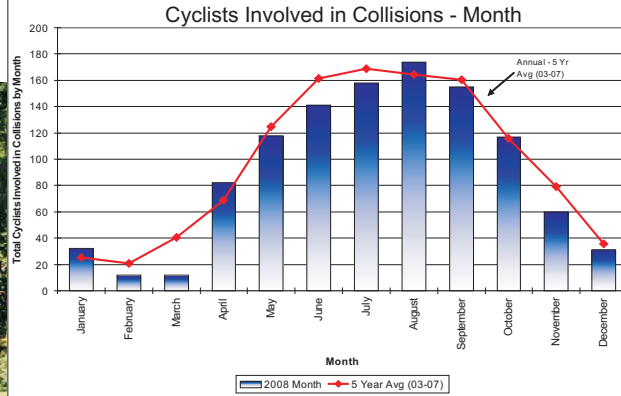
Fatal Collision: A death that has occurred within 366 days of the collision.



Transportation Services  
Traffic Management Centre  
Traffic Safety Unit

### Cyclist Collisions - History

Year	Fatal	Injured	No Injury	Total
2003	1	1,020	176	1,197
2004	3	1,015	157	1,175
2005	3	1,021	161	1,185
2006	3	954	143	1,100
2007	3	1,019	153	1,175
2008	2	935	155	1,092
<b>Total</b>	<b>15</b>	<b>5,964</b>	<b>945</b>	<b>6,924</b>



### Cyclists Involved in Collisions - Safety Equipment

Injury Severity	2008				Annual 5 Year Avg (03-07)
	Wearing Helmet	No Helmet	Use Unknown	Total	
No Injury	4	7	144	155	5
Minimal	162	241	78	481	137
Minor	135	211	69	415	103
Major	13	20	6	39	10
Fatal	0	0	2	2	1
<b>Total</b>	<b>314</b>	<b>479</b>	<b>299</b>	<b>1,092</b>	<b>256</b>

### Cyclists Involved in Collisions - Road Surface Condition

Road Surface Condition	2008				Annual 5 Year Avg (03-07)
	Fatal	Injured	No Injury	Total	
Dry	2	839	149	990	1,043
Wet	0	86	5	91	109
Loose Snow	0	4	0	4	3
Slush	0	3	1	4	2
Ice	0	2	0	2	1
Packed Snow	0	1	0	1	1
Loose Sand or Gravel	0	0	0	0	1
Other	0	0	0	0	7
<b>Total</b>	<b>2</b>	<b>935</b>	<b>155</b>	<b>1,092</b>	<b>1,166</b>

### Cyclists Involved in Collisions - Traffic Control

Control Type	2008				Annual 5 Year Avg (03-07)
	Fatal	Injured	No Injury	Total	
No Control	2	468	61	531	563
Traffic Signal	0	291	59	350	380
Stop Sign	0	162	33	195	203
Ped. Crossover	0	8	1	9	15
Yield Sign	0	4	1	5	2
Traffic Gate	0	1	0	1	0
Traffic Controller	0	1	0	1	1
Police Control	0	0	0	0	1
School Guard	0	0	0	0	0
Unknown or Blank	0	0	0	0	1
<b>Total</b>	<b>2</b>	<b>935</b>	<b>155</b>	<b>1,092</b>	<b>1,166</b>

### Cyclists Involved in Collisions - Severity of Injury

Injury Severity	2008	Annual 5 Year Avg (03-07)
No Injury	155	158
Minimal	481	545
Minor	415	418
Major	39	42
Fatal	2	3
<b>Total</b>	<b>1,092</b>	<b>1,166</b>

### Cyclists Involved in Collisions - Road Class

Age Group	Collector	Expressway	Local	Major Arterial	Minor Arterial	Private Property	Total
Not Stated	5	0	1	17	5	1	29
0-4 yrs	0	0	0	0	0	0	0
5-14 yrs	12	0	24	25	22	7	90
15-19 yrs	9	1	8	61	24	2	105
20-24 yrs	7	0	6	115	34	0	162
25-34 yrs	9	4	9	165	49	4	240
35-44 yrs	6	1	10	130	40	2	189
45-54 yrs	11	3	9	100	42	4	169
55-64 yrs	5	0	5	42	14	0	66
65+ yrs	3	0	5	26	8	0	42
<b>Total</b>	<b>67</b>	<b>9</b>	<b>77</b>	<b>681</b>	<b>238</b>	<b>20</b>	<b>1,092</b>

### Cyclists Involved in Collisions - Age Group

Age Group	2008				Annual 5 Year Avg (03-07)
	Fatal	Injured	No Injury	Total	
0-4 yrs	0	16	2	18	29
5-14 yrs	0	79	11	90	113
15-19 yrs	0	85	20	105	110
20-24 yrs	0	146	16	162	127
25-34 yrs	0	194	28	222	230
35-44 yrs	0	167	22	189	233
45-54 yrs	1	152	16	169	150
55-64 yrs	1	58	7	66	71
65+ yrs	0	35	7	42	45
Unknown or Blank	0	3	26	29	57
<b>Total</b>	<b>2</b>	<b>935</b>	<b>155</b>	<b>1,092</b>	<b>1,166</b>

The collision information presented in the leaflet was summarized from Motor Vehicle Collision Reports obtained from the Toronto Police Service.

Driver Action - Cyclists Involved in Collisions, 2003-2008

Driver Action	2008				Annual 5 Yr Avg (03-07)
	No Injury	Injured	Fatal	Total	
Driving Properly	72	279	1	352	405
Failed to yield right-of-way	28	269	1	298	347
Other, Unknown or Blank	21	127	0	148	190
Improper turn	17	129	0	146	102
Improper passing	5	51	0	56	43
Improper lane change	3	31	0	34	21
Disobey traffic control	2	24	0	26	32
Following too close	4	12	0	16	12
Lost control	2	6	0	8	7
Speed too fast for condition	1	2	0	3	3
Wrong way on one-way road	0	3	0	3	2
Exceeding speed limit	0	1	0	1	2
Speed too slow	0	1	0	1	1
<b>Total</b>	<b>155</b>	<b>935</b>	<b>2</b>	<b>1,092</b>	<b>1,166</b>

Cyclist Collision Rate - Toronto compared to other Canadian Cities\*

City	Population	Total Collisions	Collision Rate / 100,000 Population	Cyclist Collisions	Cyclist Collision Rate / 100,000 Population
Toronto	2,651,717	55,808	2,105	1,079	41
Montreal	1,854,442	37,385	2,016	693	37
Calgary	1,042,892	39,542	3,792	292	28
Ottawa	870,800	15,638	1,796	277	32
Edmonton	752,412	29,072	3,864	235	31
Winnipeg	665,028	14,726	2,214	230	35
Vancouver	578,041	2,637	456	229	40
Hamilton	504,559	3,314	657	162	32

Driver Condition - Cyclists Involved in Collisions, 2003-2008

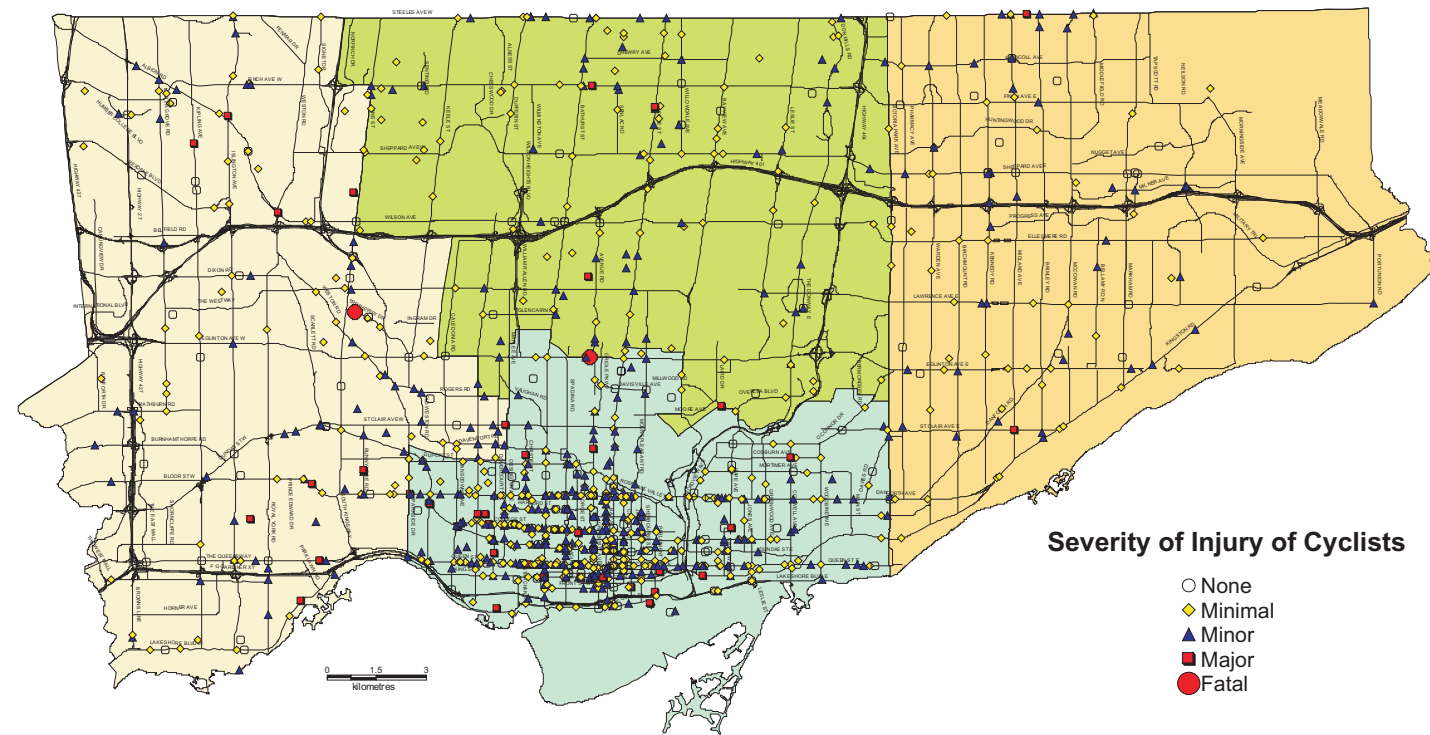
Driver Condition	2008				Annual 5 Yr Avg (03-07)
	No Injury	Injured	Fatal	Total	
Normal	106	607	1	714	799
Inattentive	21	196	1	218	167
Unknown	11	87	0	98	141
Blank	16	37	0	53	47
Other	1	2	0	3	5
Had been drinking	0	2	0	2	5
Ability impaired, alcohol (over .08)	0	1	0	1	1
Ability impaired, alcohol	0	1	0	1	1
Fatigue	0	1	0	1	1
Medical or physical disability	0	1	0	1	0
Ability impaired, drugs	0	0	0	0	0
<b>Total</b>	<b>155</b>	<b>935</b>	<b>2</b>	<b>1,092</b>	<b>1,166</b>

\* Most recent data available

Cyclist Collision Types (Ranked by frequency)

Collision Types	2008		Annual 3 Yr Avg (05-07)
	Cyclists	%	
Cyclist and Driver travelling in same direction. One vehicle sideswipes the other.	177	16%	161
Cyclist without right of way (fault) rides into the path of motorist at intersection, laneway, driveway - Cyclist not turning.	156	14%	146
Motorist turned left across cyclist's path.	139	13%	160
Cyclist struck opened vehicle door	131	12%	137
Motorist without right of way (fault) drives into the path of cyclist at intersection, laneway, driveway - Driver not turning.	108	10%	113
Motorist turns right at non-signalized intersection (i.e. stop sign, yield, no control, and driveway) and strikes cyclist.	84	8%	30
Motorist turning right on red at signalized intersection strikes cyclist.	69	6%	94
Insufficient information (to determine cyclist crash type).	56	5%	42
Cyclist and Driver travelling in same direction. One vehicle rear-ended the other.	42	4%	48
Cyclist turned left across motorist's path.	32	3%	36
Motorist turning right on green or amber at signalized intersection strikes cyclist.	26	2%	109
Cyclist rode off sidewalk into road at midblock.	15	1%	18
Cyclist hit in parking lot.	13	1%	13
Motorist makes u-turn in-front of cyclist.	10	1%	8
Cyclist loses control and strikes object (i.e. pole, TTC track)	9	1%	6
Motorist reversing struck cyclist.	8	1%	12
Cyclist strikes a parked vehicle.	5	0%	7
Cyclist struck at Pedestrian Crossover (cyclist either traveling in same direction as vehicles or riding across crosswalk)	4	0%	7
Cyclist falls off bike - no contact with motorist.	4	0%	2
Motorist loses control and strikes cyclist.	2	0%	3
Cyclist strikes another cyclist	2	0%	1
Cyclist makes u-turn in-front of driver.	0	0%	0
Cyclist strikes pedestrian.	0	0%	0
<b>Total</b>	<b>1,092</b>	<b>100%</b>	<b>1,153</b>

Collisions Involving Cyclists, January 1, 2008 - December 31, 2008



Severity of Injury of Cyclists

- None
- ◇ Minimal
- ▲ Minor
- Major
- Fatal