

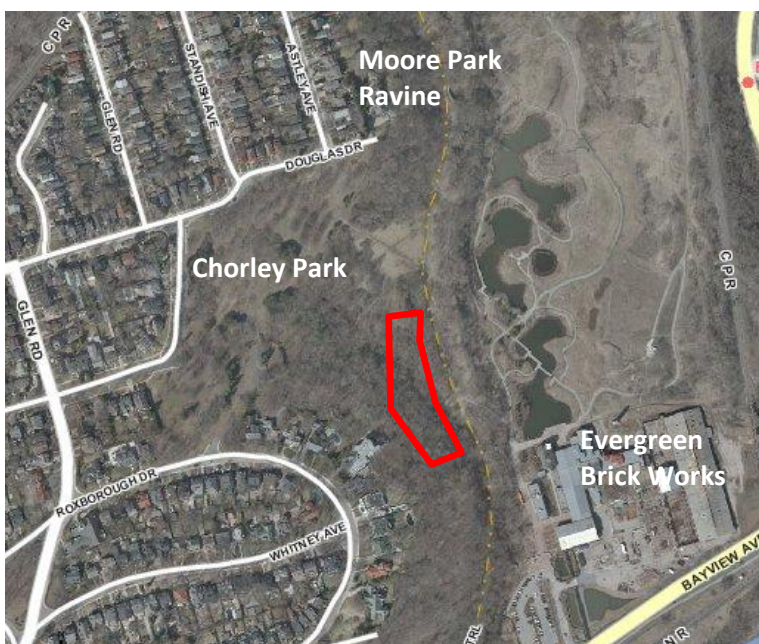
## Mud Creek Ravine Restoration January 2012

Urban Forestry is working in partnership with Toronto Water and the Toronto and Region Conservation Authority (TRCA) to improve storm water flow conditions and overall ravine health throughout the Mud Creek watershed. Mud Creek is part of the Don River Watershed and has been prioritized for management in both the TRCA Don River Watershed Plan and the Toronto Water Wet Weather Flow Master Plan. Urban Forestry is participating in various ways:

- Ravine & Natural Feature Protection By-law review of construction plans
- Identifying future stewardship initiatives and trail upgrades throughout the Belt Line
- Phasing of invasive tree removal and replanting, as well as preventative tree management work to address flood conveyance issues



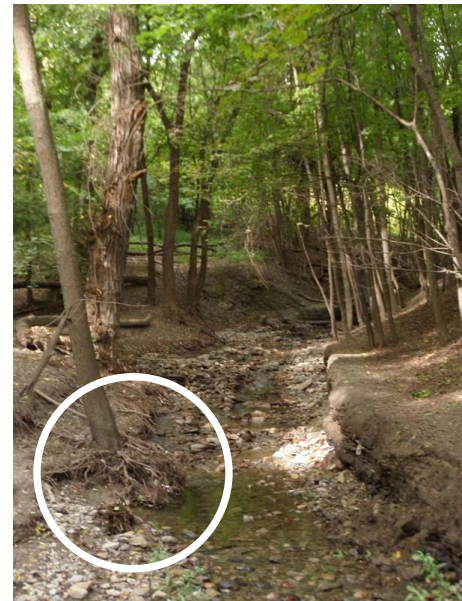
The Mud Creek watershed extends south from Moore Avenue to just south of the Evergreen Brick Works. The channel is located in Moore Park Ravine.



The first portion of the watercourse to be reconstructed is located just north-west of the Evergreen Brick Works. This section is approximately 145 metres long and has been experiencing severe bank erosion and flooding.

Blockages during flood events have impacted tree health in the lower channel from both accumulation of silt on top of tree roots and soil erosion leading to tree root exposure. The existing tree cover is dominated by invasive tree species including Norway maple, Manitoba maple, European alder and black locust. This dense canopy intensifies the erosion issues in this area by inhibiting vegetation growth. Retention of the full tree canopy in this area will impact the success of the channel erosion project by inhibiting the success of replanting efforts. Urban Forestry will be carefully examining the existing tree cover to plan additional tree thinning starting in 2012 and phased over subsequent years to allow gradual replacement with native species.

**Mud Creek Reach 1** – Below left: Dense canopy and bare soil conditions on surrounding forest slopes. Right: Tree root exposure and subsequent mortality within the channel (roots circled). Photos taken fall 2011.



Urban Forestry has also been involved in other ravine restoration initiatives in this area, mainly concentrated in the northern section of Moore Park Ravine. These projects have included phased invasive tree removal plans to address slope stabilization issues, invasive plant control (Japanese knotweed, garlic mustard, invasive shrubs etc.) and maintenance of past planting projects completed in partnership with the Task Force to Bring Back the Don including Belt Line Pond.

For additional information about Urban Forestry Forest Renewal plans in this area, please contact Natural Resource Specialist, Cara Webster at [cwebster@toronto.ca](mailto:cwebster@toronto.ca) or 416-392-5384

For more information on the Toronto and Region Conservation Authority Mud Creek Project visit:

<http://trca.on.ca/the-living-city/green-infrastructure-projects/maintenance-projects/mud-creek-restoration-reach-1.dot>