

TRANSIT SHELTERS

The shelter will become one of the most visible components of the streetcar-way design, underpinning the overall streetscape identity. The shelter will provide an attractive, interesting, safe, and comfortable waiting area for transit passengers.

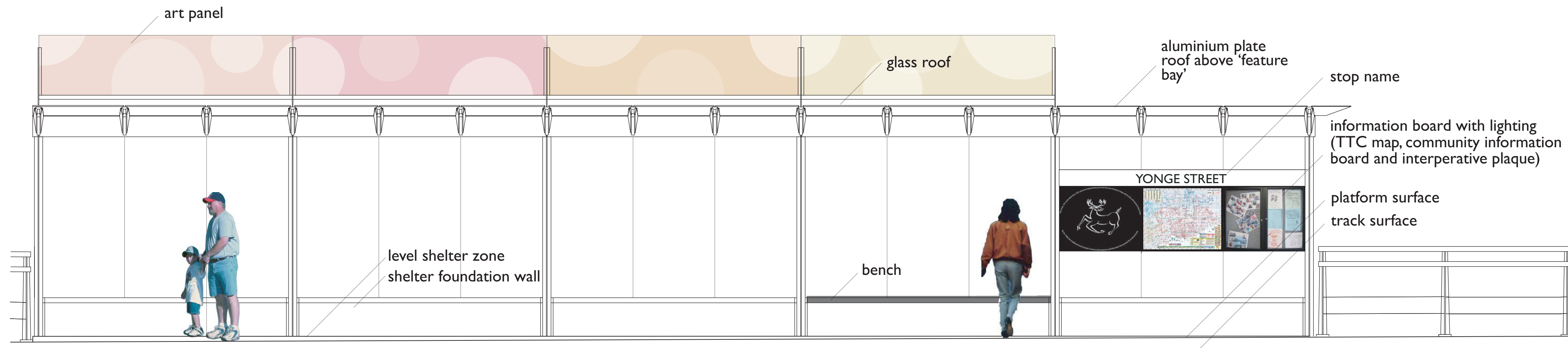
A shelter will be located on each platform, fixed in place to the rear curb of the platform.

The major structural components of the proposed shelter include:

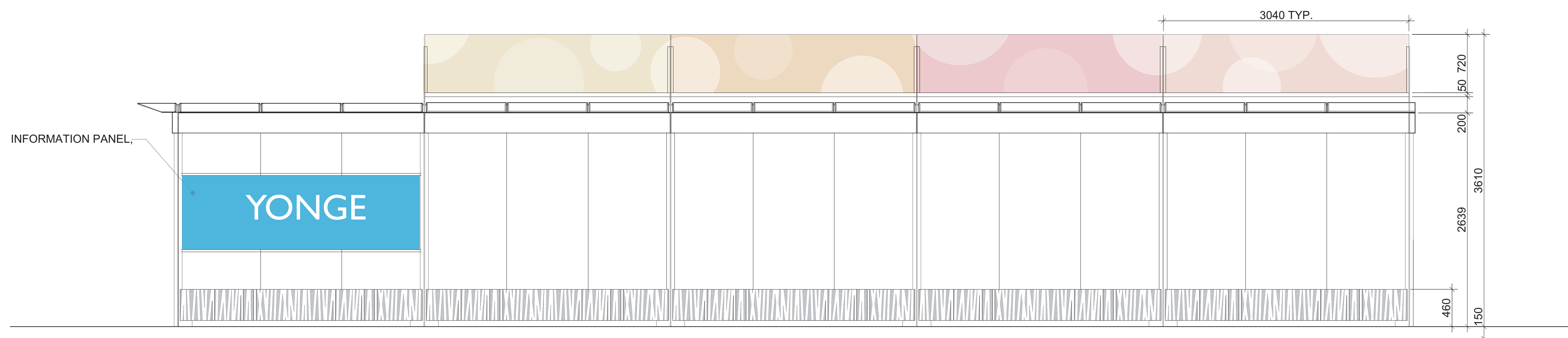
- Steel structure comprising 5' bays' defined by vertical supports;

- Precast concrete barrier, 0.5m high, integrated with the shelter base to deflect colliding vehicles;
- High proportion of glazing for transparency and visibility into and through shelter.
- In addition, a number of specific design elements are proposed that build on the opportunities for creative, contemporary expression.
- Transparent, flat, and cantilevered roof;
- Public art located above roof;
- Bench seating integrated with shelter structure;

- TTC route, community information boards and interpretive plaque
- Tempered glazing of vertical areas;
- Smooth and rounded edges for all steel components;
- Power-coated paint finish for steel surfaces;
- Stop location insert integrated into both sides of the 'feature bay';
- 'Feature bay' integration.



Elevation (facing track)



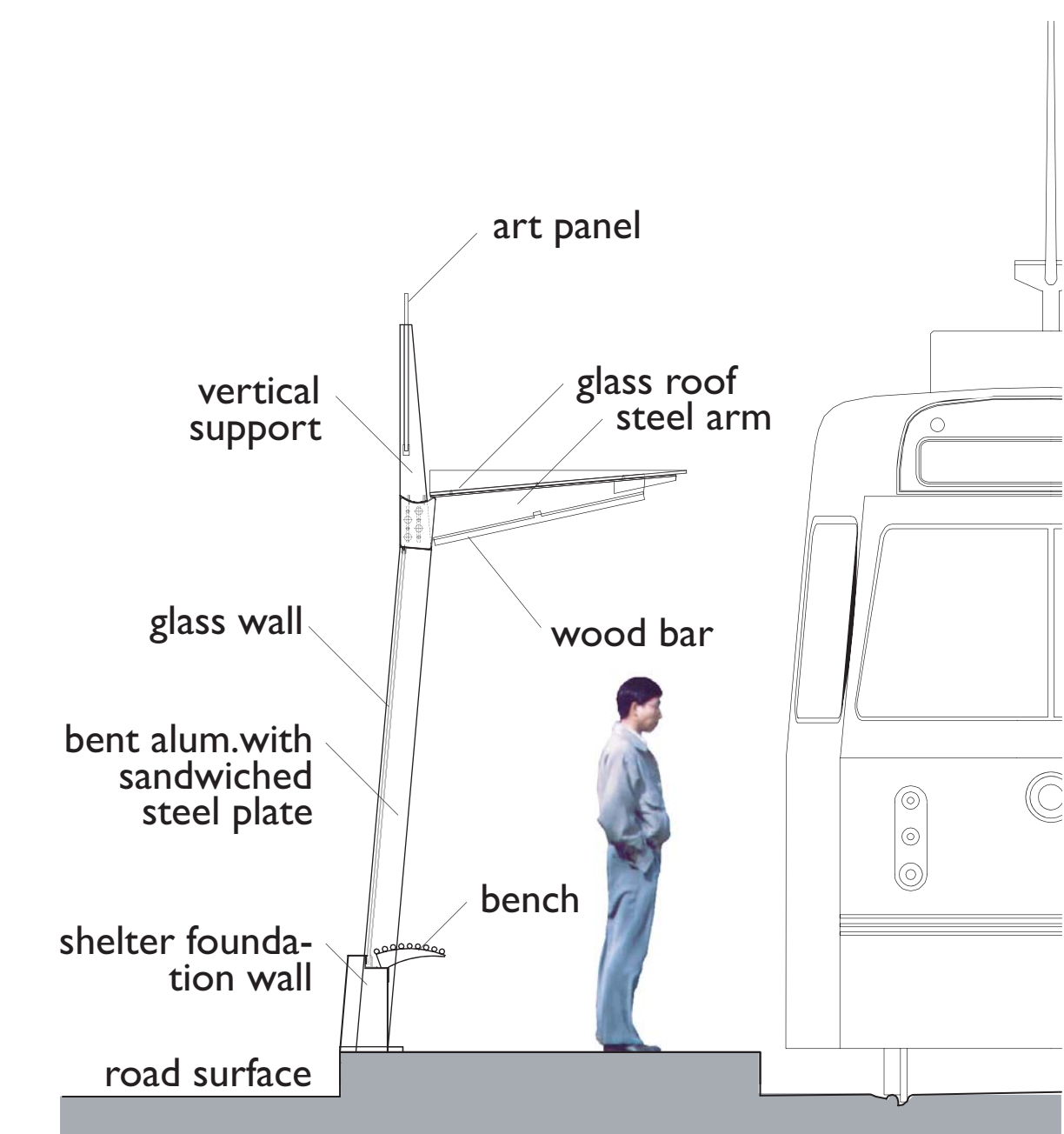
Elevation (facing street)



PUBLIC ART

In Phase 1 public art will be incorporated into 7 of the 13 shelters. Some of the key considerations in the integration of Public Art into the shelter are as follows:

- Provision is made in the design to incorporate a variety of art options. One concept for the integration of art involves laminating an image within glass panels and mounting the panel at the top of the shelter – out of reach but in clear view.
- The proposed laminating system enables decorative colour imagery and design textures to be digitally printed in safety glass. The glass art panels would be semi-transparent to enable penetration of views and light.
- It is anticipated that public art will respond to and be inspired by its surroundings.
- An art competition will be held to select an artist and art that is an appropriate design and suitable for the location.



Section through Shelter

