

SIDEWALKS AND CROSSWALKS

At intersections, sidewalk width will be reduced to accommodate wider platforms and an additional left turn/u-turn lane.

All sidewalks will be reconstructed in Phase 1 – between Yonge Street and Tweedsmuir Avenue.

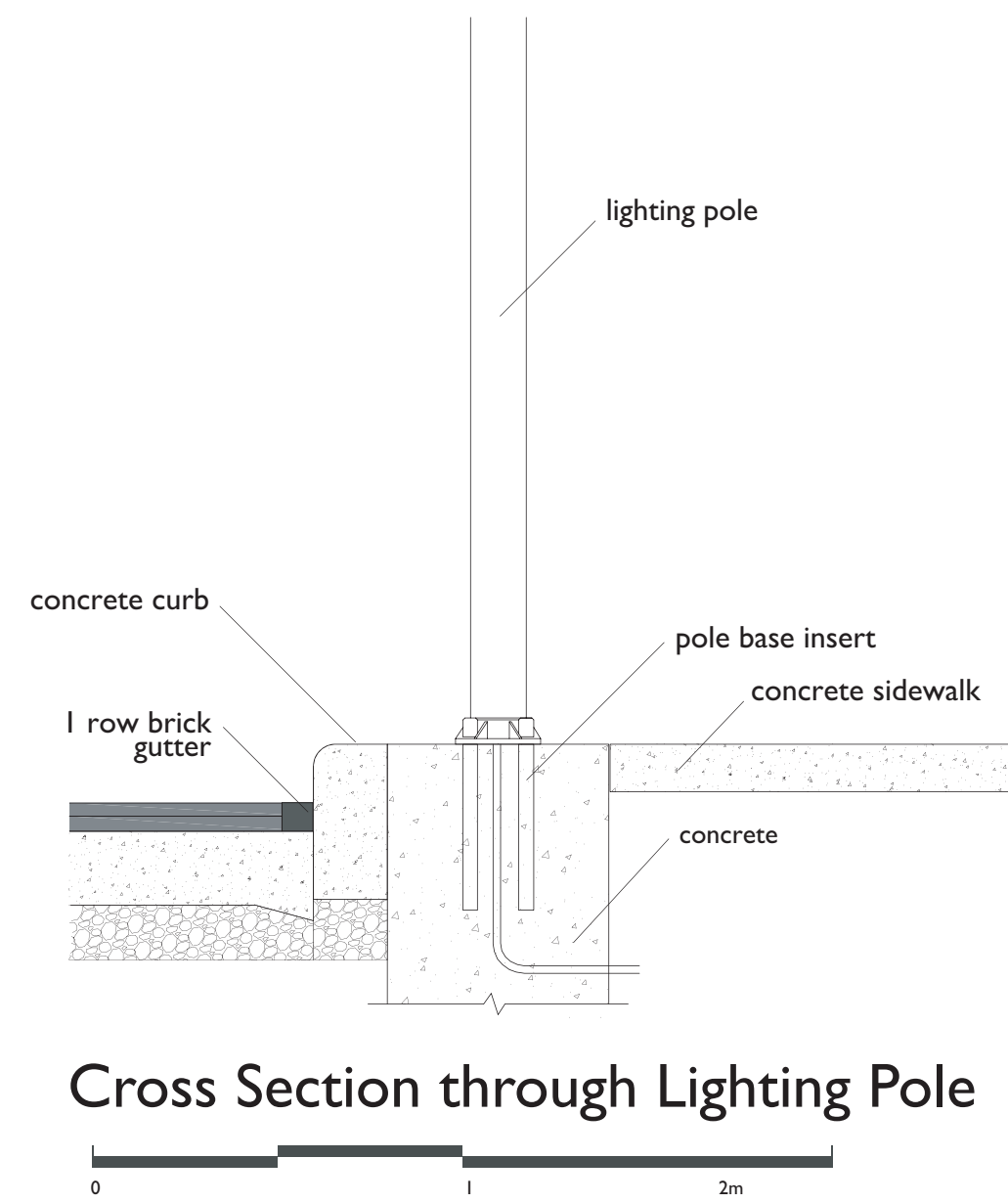
At intersections, the extent of sidewalk reduction will vary depending on location.

New sidewalks will be at least 2.0m wide, measured from curb to back of sidewalk. Most sidewalks will be 2 to 5m wide.

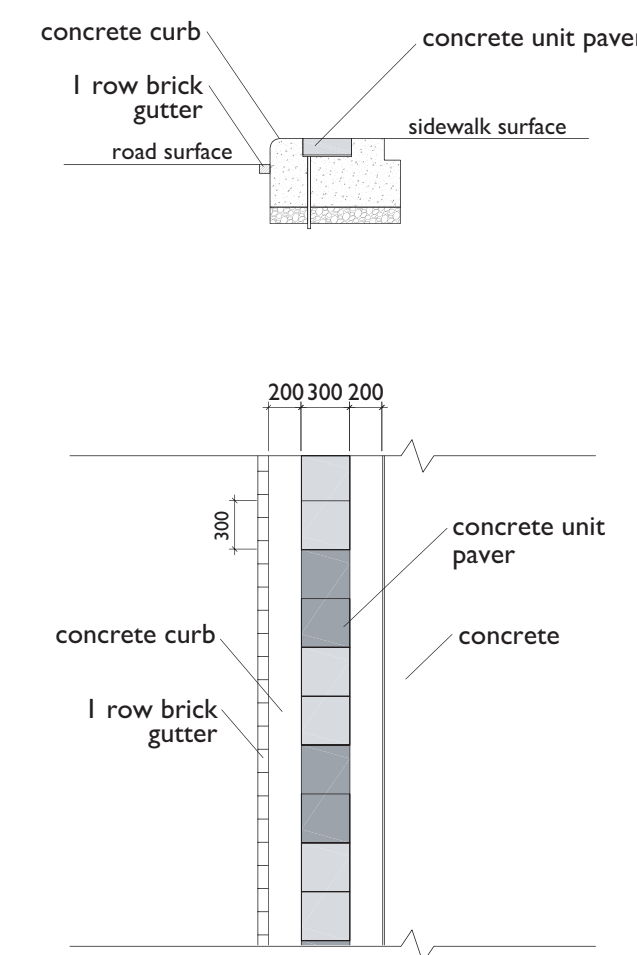
New sidewalks will feature a ‘decorative’ pattern, integrated between the curb and the sidewalk pavement. This decorative pattern will be produced by using concrete unit pavers of alternating color.

At crosswalks, curb ramps will be provided which are designed to meeting the City of Toronto Accessibility Design Guidelines.

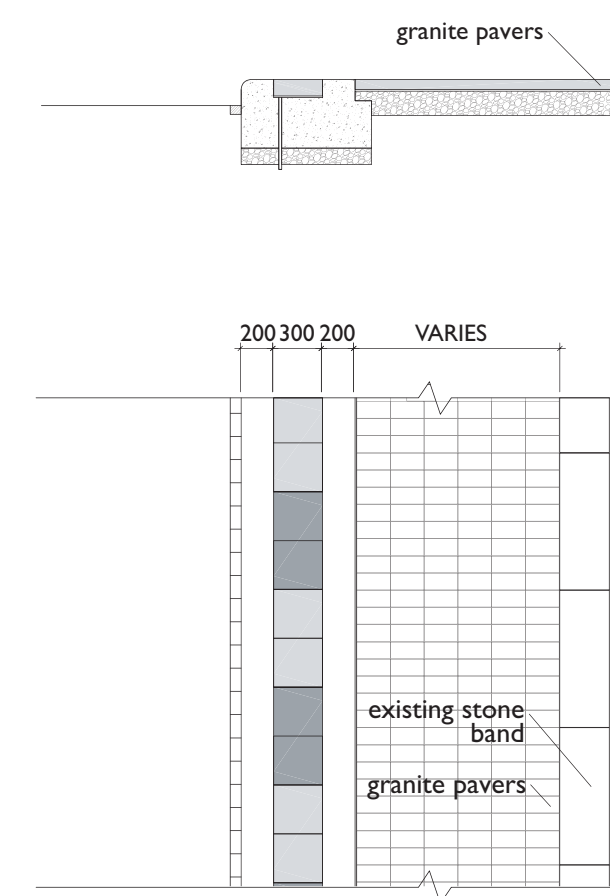
Crosswalks will be 3.0m wide and constructed of concrete unit pavers for a distinctive, textured, non-slip surface. Unit paving will be arranged in a bold stripe pattern that is visually consistent with the platform and sidewalk pattern.



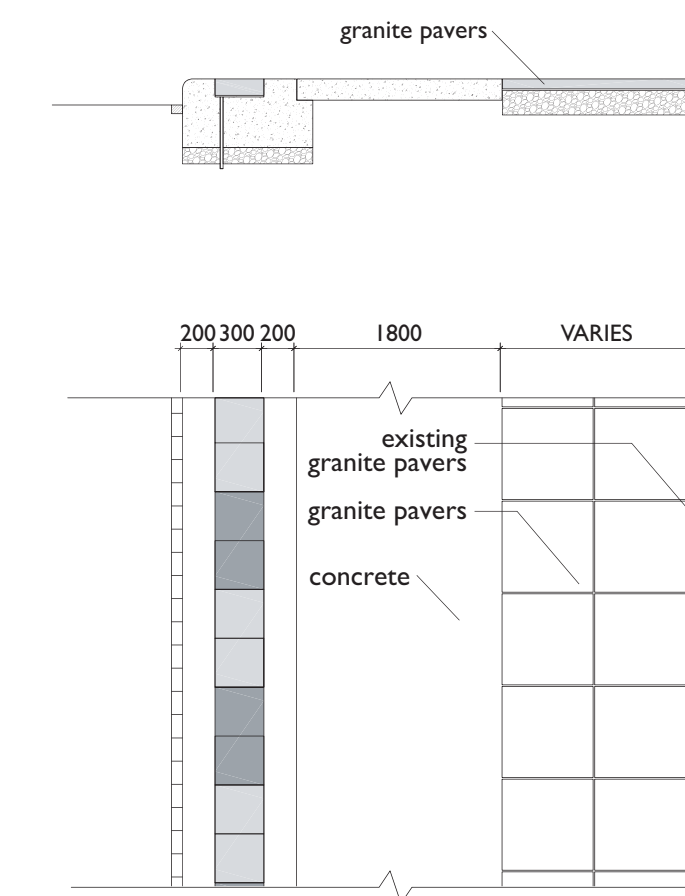
Cross Section through Lighting Pole



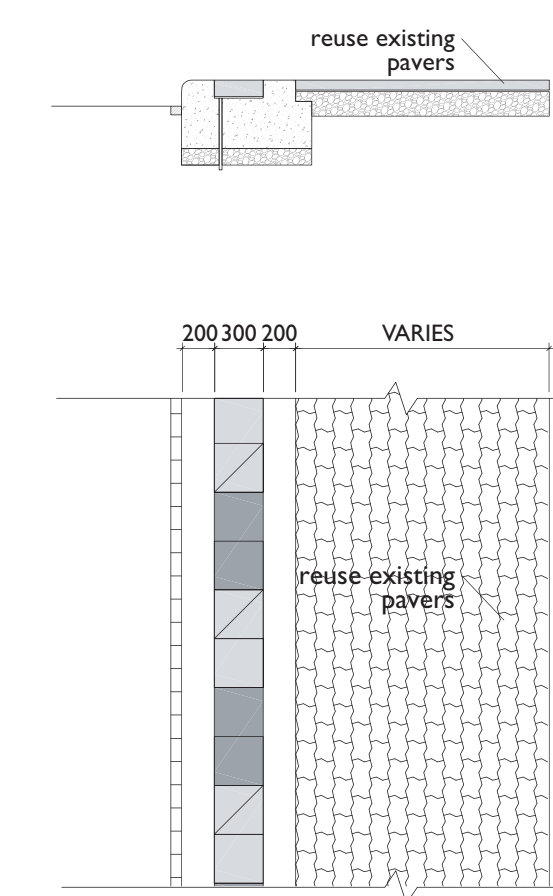
Concrete curb monolithic with unit paver strip



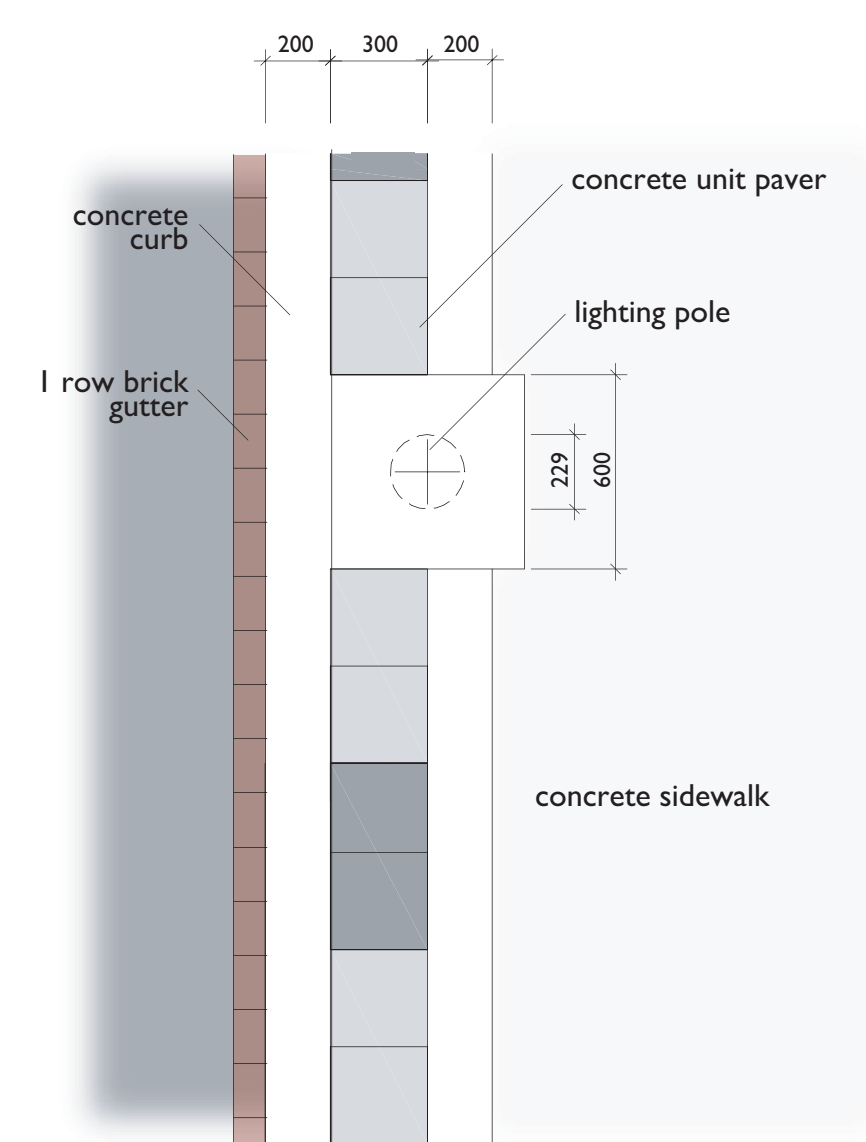
Concrete curb combined with unit pavers granite paver sidewalk



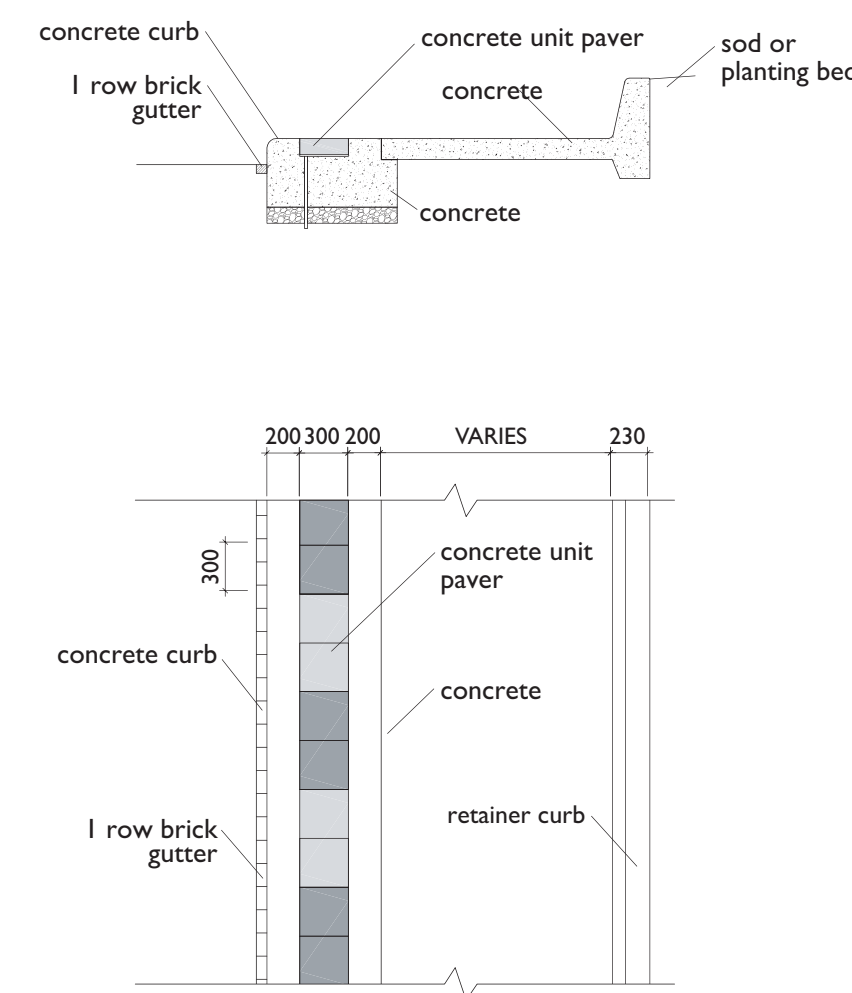
Concrete curb combined with unit pavers granite paver sidewalk



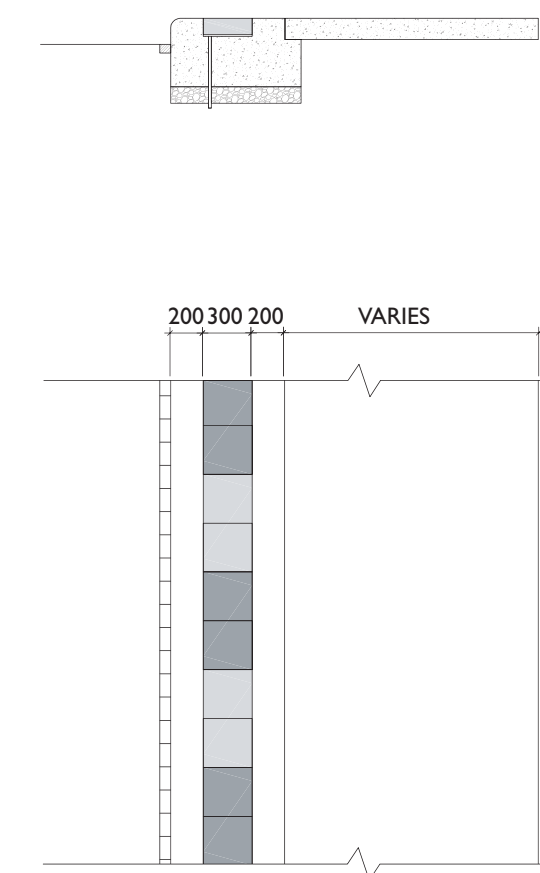
Concrete curb combined with unit pavers recycled unit paver sidewalk



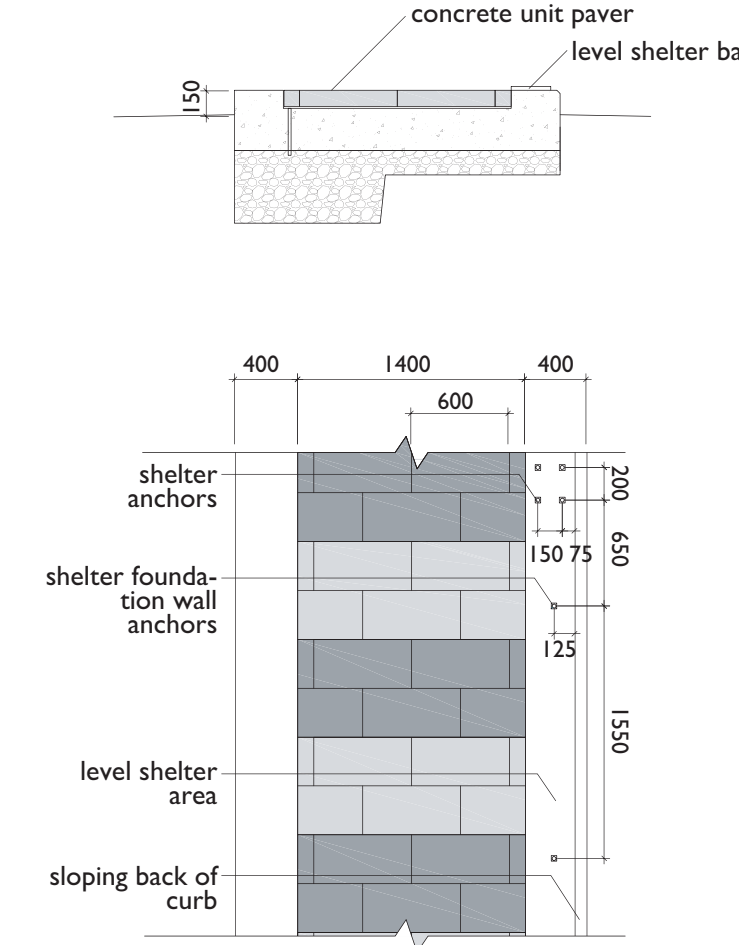
Typical Sidewalk & Lighting Pole Plan



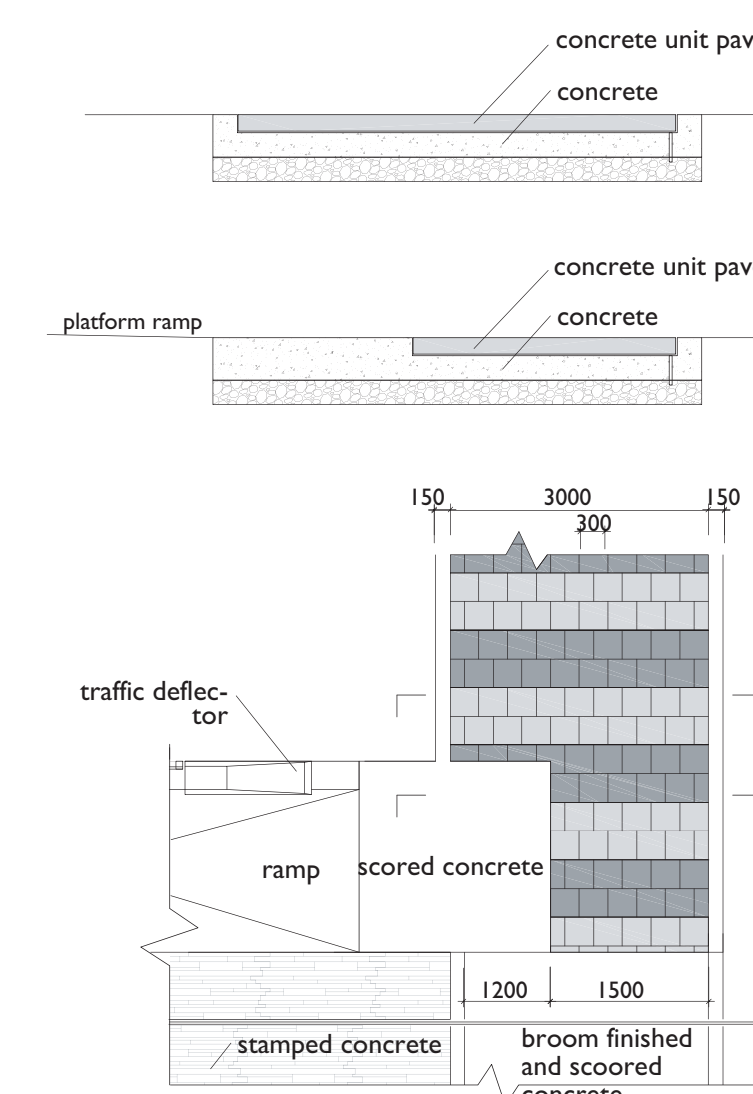
Concrete curb combined with unit pavers concrete sidewalk with retainer curb



Concrete curb combined with unit pavers concrete sidewalk



Streetcar platform



Pedestrian crosswalk