

LOCATION PLAN



LEGEND

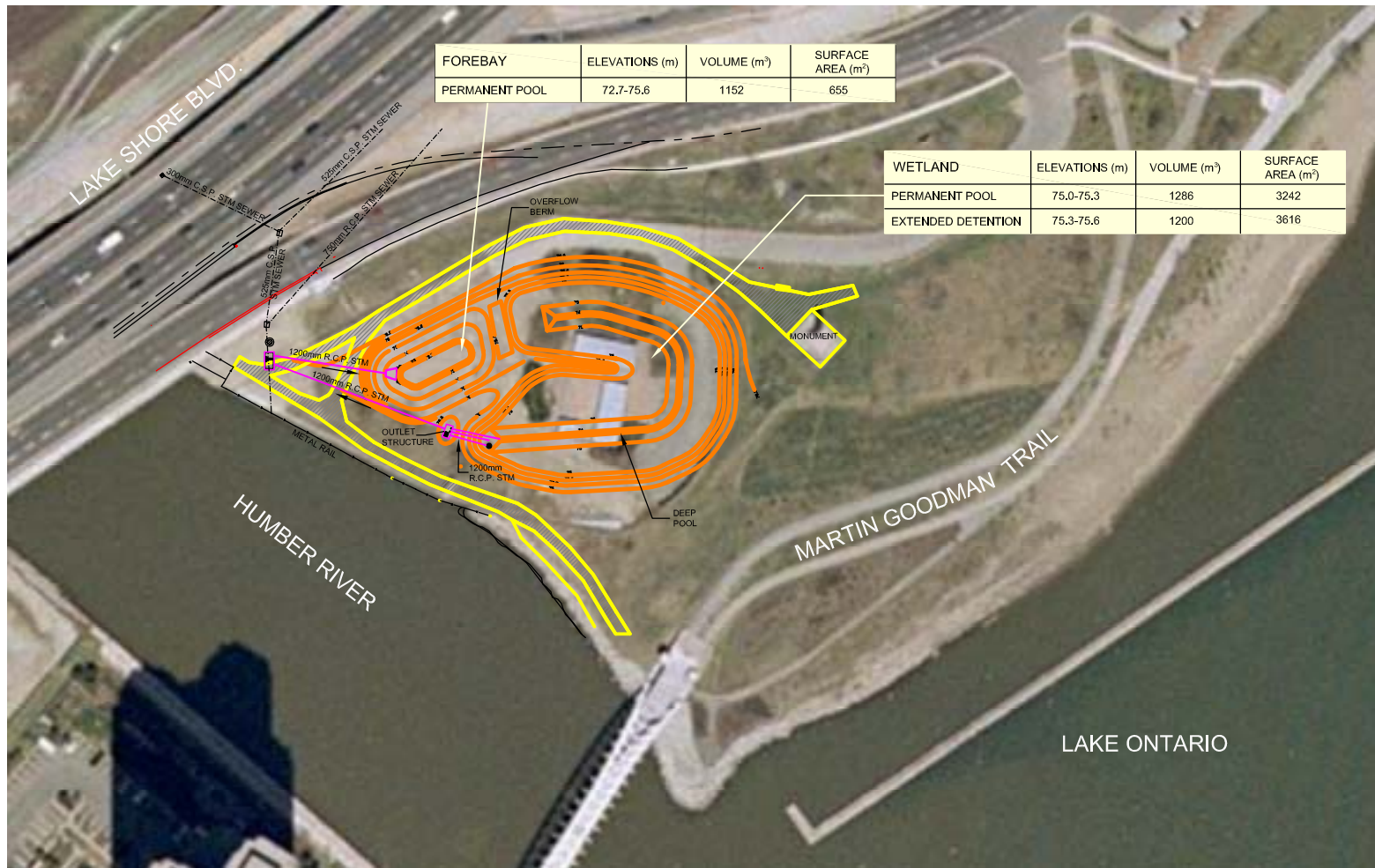
- PROPOSED STM SEWERS
- FOOTPRINT OF TREATMENT FACILITY
- PROPOSED ACCESS ROAD







Stantec



WETLAND H1



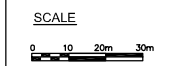
LEGEND

-  EXISTING STM SEWERS
-  PROPOSED STM SEWERS
-  FOOTPRINT OF WETLAND
-  EXISTING GRAVEL PATH

SITE DESCRIPTION:
 THE WETLAND, WHICH IS IN A PARK SETTING, IS LOCATED ADJACENT TO THE HUMBER RIVER SOUTH OF LAKESHORE BOULEVARD. THE FLOWS ENTERING THE WETLAND WILL BE PRE-TREATED IN A SEDIMENT FOREBAY

SITE CONSTRAINTS:
 EXISTING TIE-BACK SUPPORTING THE EXISTING HUMBER RIVER SHOREWALL TO THE WEST
 EMBANKMENT ALONG THE EASTBOUND LANE LAKESHORE BOULEVARD
 PEDESTRIAN WALKWAY ALONG THE EAST SIDE AND MONUMENT
 MONUMENT IN SOUTH EAST CORNER

DESIGN FACTS:
 HUMBER 100 YEAR STORM WATER LEVEL 75.89m
 2 YEAR PEAK FLOW 1,964m³/s



WETLAND HP5



FOREBAY	ELEVATIONS (m)	VOLUME (m ³)	SURFACE AREA (m ²)
PERMANENT POOL	74.0-76.0	529	457

WETLAND	ELEVATIONS (m)	VOLUME (m ³)	SURFACE AREA (m ²)
PERMANENT POOL	75.6-75.8	230	635
EXTENDED DETENTION	75.8-76.2	397	1033

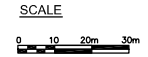


- LEGEND**
- EXISTING STM SEWERS
 - PROPOSED STM SEWERS
 - FOOTPRINT OF WETLAND

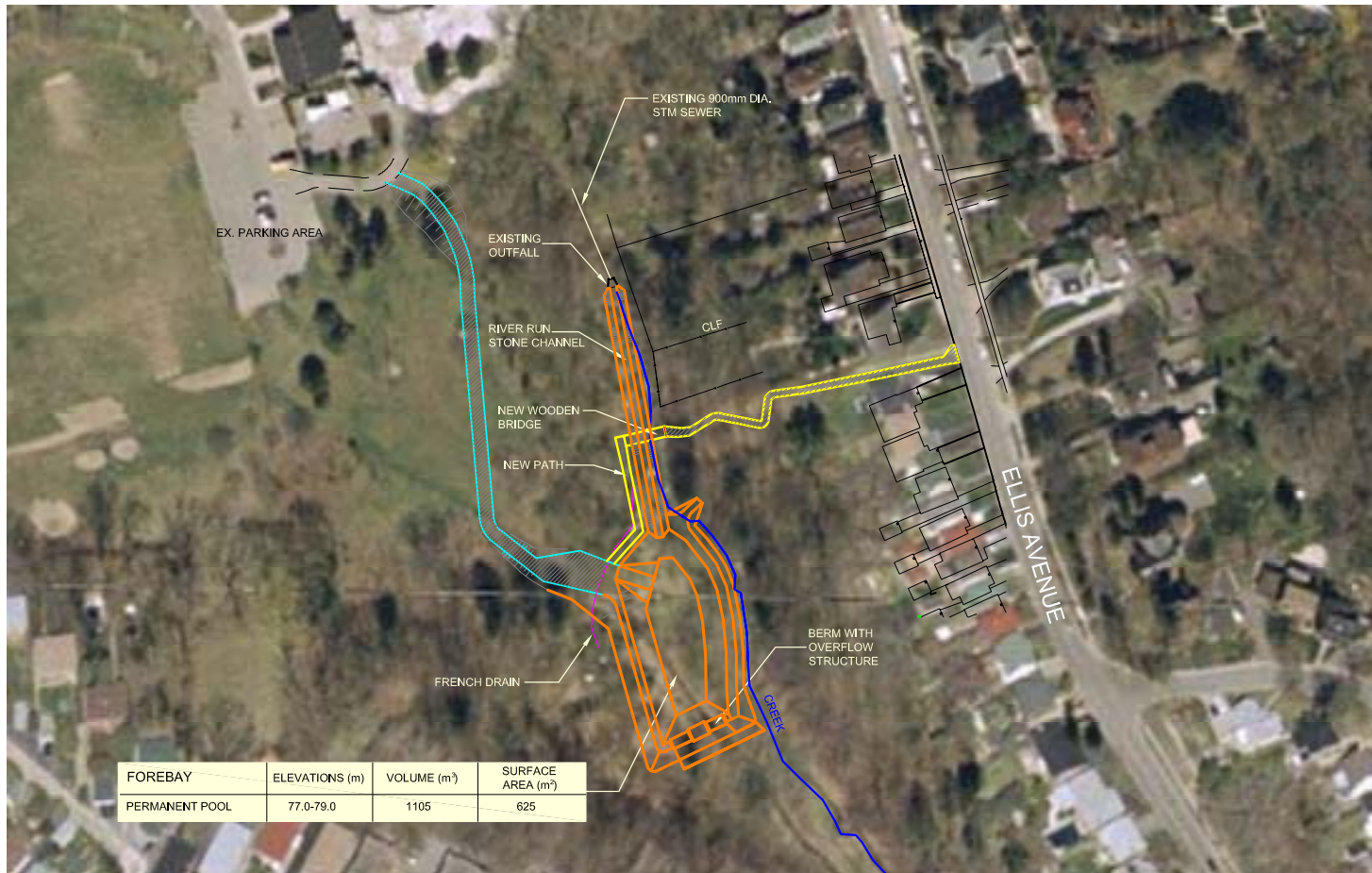
SITE DESCRIPTION:
 THE WETLAND LOCATED AT THE SOUTH-WEST CORNER OF GRENADEIR POND NEAR ELLIS GARDENS. THE FLOWS ENTERING THE WETLAND WILL BE PRE-TREATED IN A SEDIMENT FOREBAY LOCATED AT OUTFALL HP5.

SITE CONSTRAINTS:
 ELLIS AVENUE EXISTING INFRASTRUCTURE ON THE WEST.
 PRIVATE RESIDENT ON THE NORTH.
 GRENADEIR POND ALONG THE EAST PART OF SOUTH SIDE.

DESIGN FACTS:
 WEST POND NORMAL WATER LEVEL 76.4m
 GRENADEIR MAXIMUM WATER LEVEL 76.1m
 2 YEAR PEAK FLOW 0.936m³/s
 FISH HABITAT COMPENSATION TO BE IMPLEMENTED.



FOREBAY HP7A



FOREBAY	ELEVATIONS (m)	VOLUME (m ³)	SURFACE AREA (m ²)
PERMANENT POOL	77.0-79.0	1105	625



LEGEND

- EXISTING STM SEWERS
- PROPOSED STM SEWERS
- FOOTPRINT OF WETLAND
- EXISTING FOOT PATH
- PROP. ACCESS ROAD

SITE DESCRIPTION:

LOCATED AT NORTH END OF RENNIE PARK NEAR EXISTING OUTFALL HP7. THE FOREBAY WILL REMOVE LARGER PARTICLES FROM THE STORMWATER PRIOR TO DISCHARGING INTO THE CREEK.

SITE CONSTRAINTS:

STEEP EMBANKMENT ON BOTH SIDES OF THE CREEK, RARE VEGETATION, TREES AND SEEPAGE AREA.

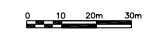
DESIGN FACTS:

THE SEDIMENT FOREBAY WAS LOCATED TO MINIMIZE UNDERCUTTING OF THE EMBANKMENT AND THE REMOVAL OF TREES AND VEGETATION.

ENERGY DISSIPATORS WILL BE UTILIZED TO REDUCE THE FLOW VELOCITIES FROM THE EXISTING 900mm DIA. PIPE.

THE EXISTING PEDESTRIAN BRIDGE WILL BE REPLACED.

SCALE



WETLAND HP7C



WETLAND	ELEVATIONS (m)	VOLUME (m ³)	SURFACE AREA (m ²)
PERMANENT POOL	76.15-76.45	2110	6740
EXTENDED DETENTION	76.45-76.75	2088	7160



LEGEND

- EXISTING STM SEWERS
- PROPOSED STM SEWERS
- FOOTPRINT OF WETLAND
- EXISTING FOOT PATH

SITE DESCRIPTION:

THE WETLAND TO BE LOCATED AT THE NORTH END OF THE WEST POND. THE FLOWS ENTERING THE WETLAND WILL BE PRE-TREATED IN A SEDIMENT FOREBAY LOCATED NEAR OUTFALL HP7 IN RENNIE PARK.

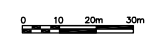
SITE CONSTRAINTS:

STEEP EMBANKMENT ON BOTH SIDES OF THE CREEK WITH VEGETATION WITHIN EXISTING BODY OF WATER

DESIGN FACTS:

- SERIES OF DEEP POOLS AND SHOALS TO IMPROVE WATER QUALITY.
- FISH HABITAT COMPENSATION IN GRENADIER POND.

SCALE



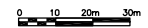
OIL/ GRIT SEPARATOR HP8



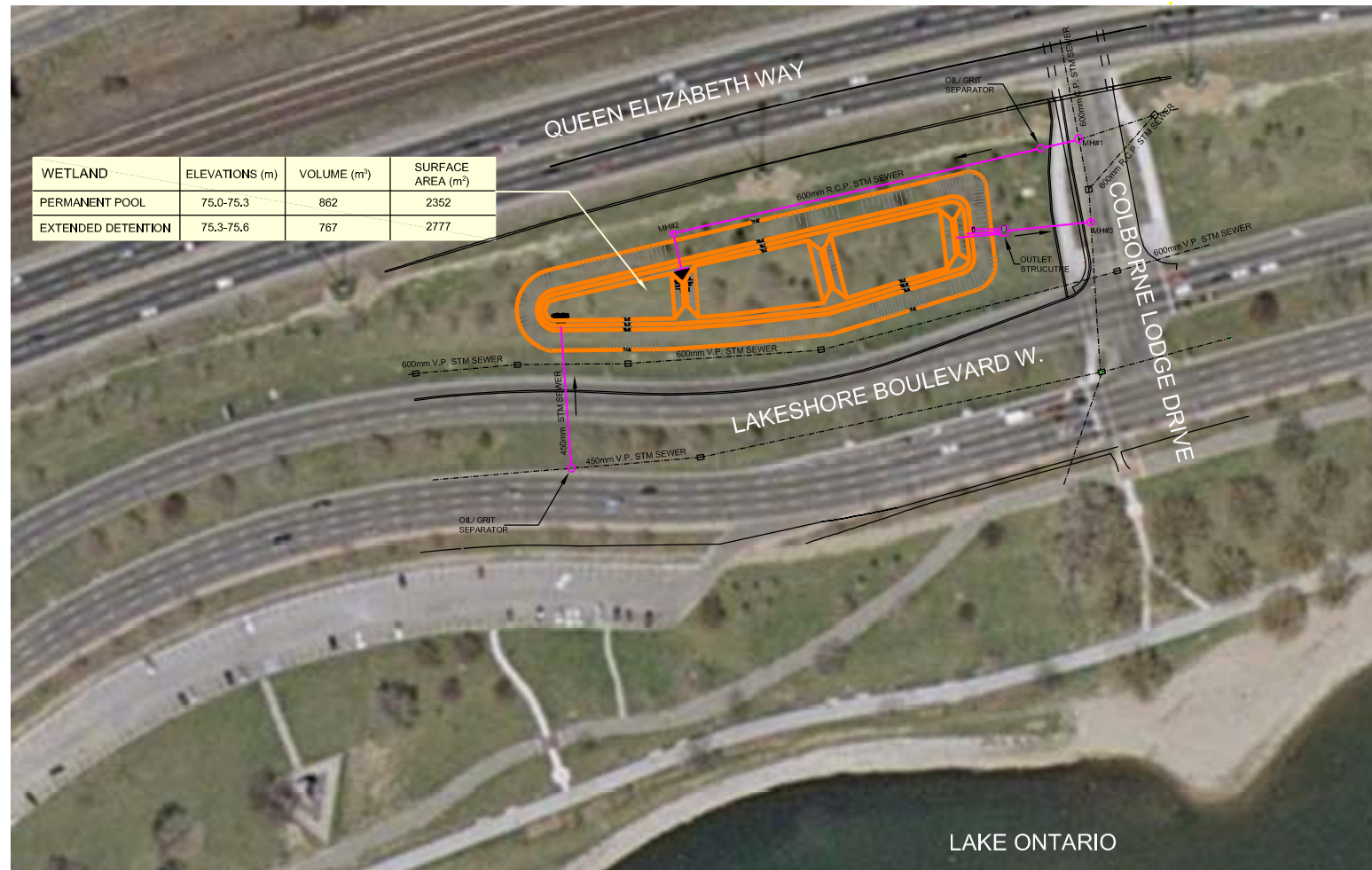
LEGEND

- EXISTING STM SEWERS
- PROPOSED STM SEWERS

SCALE



WETLAND W11



WETLAND	ELEVATIONS (m)	VOLUME (m ³)	SURFACE AREA (m ²)
PERMANENT POOL	75.0-75.3	862	2352
EXTENDED DETENTION	75.3-75.6	767	2777



LEGEND

- EXISTING STM SEWES
- PROPOSED STM SEWERS
- FOOTPRINT OF WETLAND

SITE DESCRIPTION:

THE WETLAND LOCATED IN PARKLAND AT LAKESHORE BLVD. W AND SITUATED ON THE WEST SIDE OF COLBORNE LODGE DRIVE.

THE FLOWS ENTERING THE WETLAND WILL BE PRE-TREATED WITH OIL/ GRIT SEPARATOR

SITE CONSTRAINTS:

EMBANKMENT ALONG QEW/ GARDINER EXPRESSWAY ON THE NORTH

COLBORNE LODGE DRIVE ON THE EAST

WESTBOUND LANE OF LAKESHORE BLVD. ON THE SOUTH

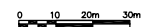
NARROWING OF THE PARKLAND ON THE WEST SIDE

DESIGN FACTS:

2 YEAR FLOW 1.711m³/s

THE WETLAND HAD TO BE SHIFTED FURTHER WEST FROM COLBORNE LODGE DRIVE SINCE THERE ARE ELECTRICAL BOXES/ CABLES IN THIS AREA

SCALE



Stantec



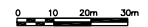
SCREENING DEVICE W12



LEGEND

- EXISTING STM SEWERS
- PROPOSED STM SEWERS
- MAINTENANCE VEHICLE ACCESS

SCALE



Stantec

