

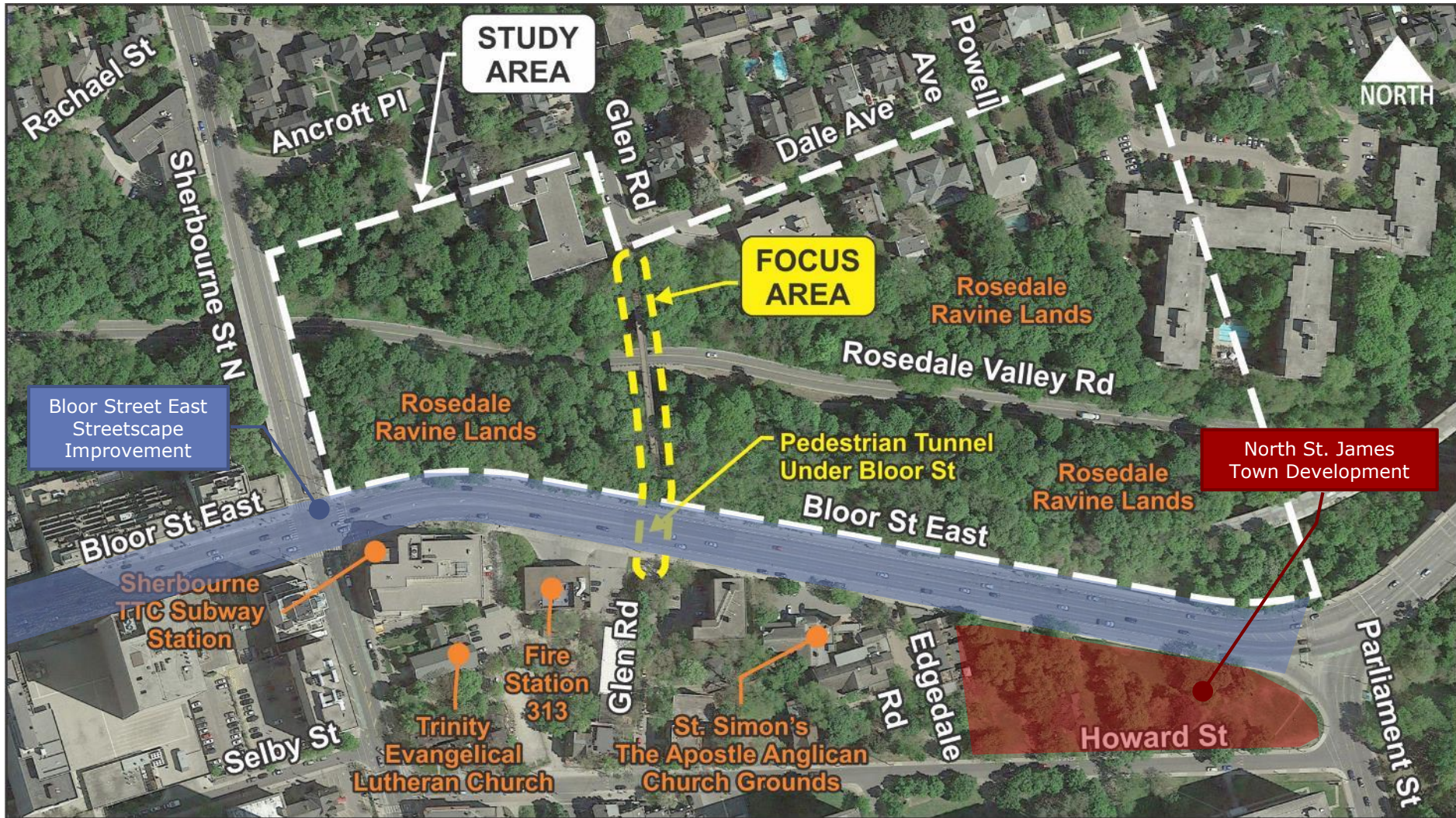


# Glen Road Pedestrian Bridge Environmental Assessment

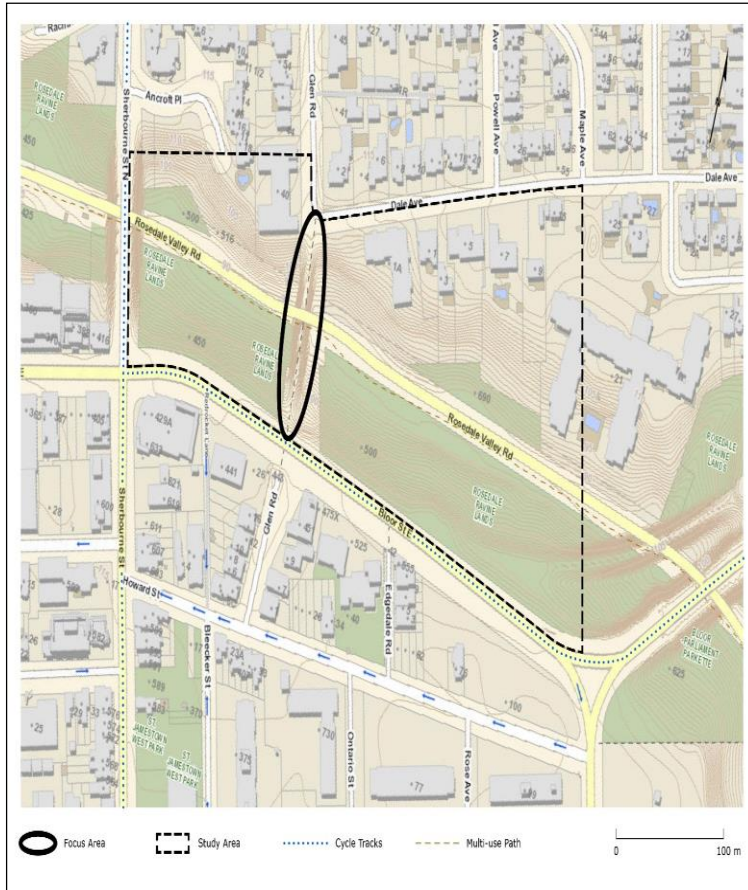
**Presentation to Design Review Panel  
July 18, 2017**

 **TORONTO** Transportation Services

# STUDY AREA



# STUDY AREA

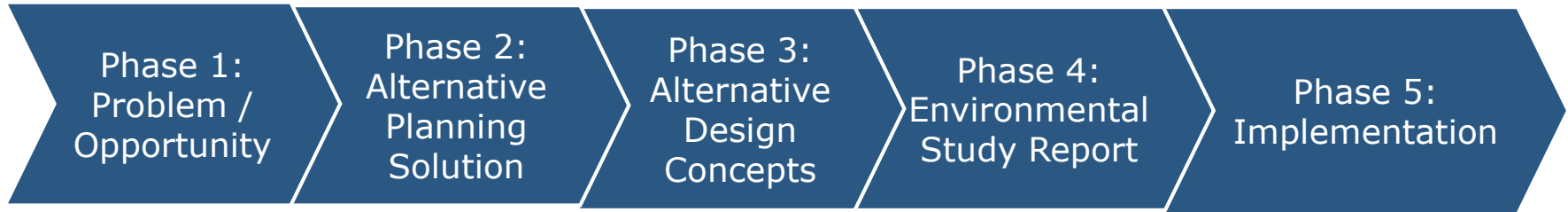


# EA SCHEDULE AND PROCESS

Municipal Class EA: Schedule C project given the age of the structure (+40 years); cultural heritage value potential

A cultural heritage evaluation report was completed:

- heritage significance found in crossing; views from the valley



Extensive consultation with area Councillors; community stakeholders

- Community Walk-shop - June 2016,
- Notice of Commencement and Public Information Centre - September 2016

RFP scope was revised to include pedestrian tunnel – Fall 2016

# EA STUDY – PRELIMINARY RECOMMENDATIONS

---

Based on the results of the EA and technical analysis completed to date, the preliminary recommendations are to:

- **Replace the Bridge in same location;** and
- **Replace and Reconstruct a Wider Tunnel** to the west.

These recommendations:

- Address the condition of the bridge and concerns about security
- Maintain the cultural heritage value and connections to active transportation and transit facilities
- Provide opportunities for urban design improvements
- Add capacity for growth in pedestrian and cyclist traffic

# NEXT STEPS

---

- Design Review Panel (#1 Review) – July 18, 2017
- Public Information Centre #2 – September 26, 2017
- Toronto Preservation Board – Fall 2017
- Finalize Environmental Study Report; 30-day Public Review Period – late Fall 2017
- Detailed Design – 2018 / 2019
- Design Review Panel (#2 Review)
- Construction – 2019 / 2020

# BACKGROUND

View from the south end of bridge, looking north to Glen Rd / Dale Ave



# BACKGROUND

View of vehicular bridge looking south



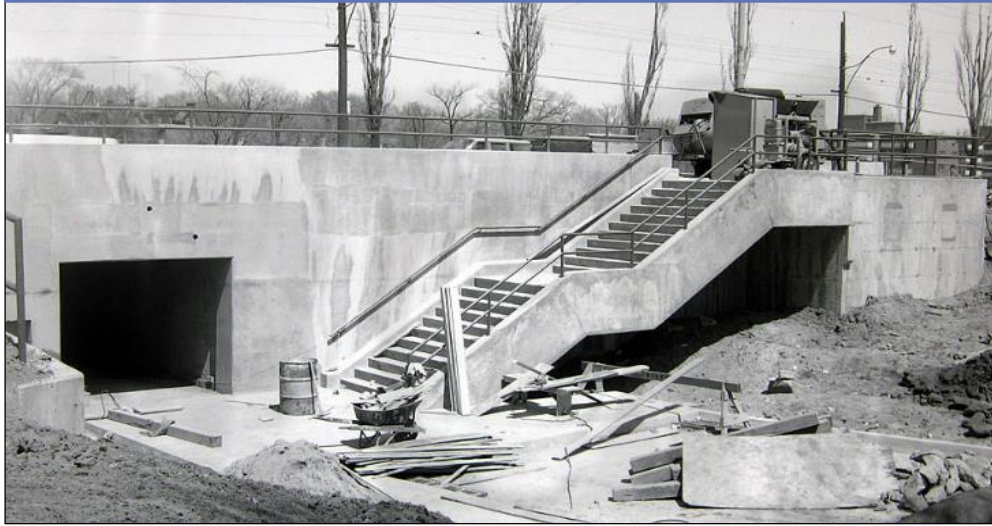
View on pedestrian bridge looking south





# BACKGROUND

Tunnel construction underway (1964)



View from Glen Road looking north to tunnel and TTC entrance



# BACKGROUND

View of bridge looking south (1951)



View on bridge looking south



# ROSEDALE VALLEY

View from Rosedale Valley Road looking east



# BRIDGE

View from mid-bridge looking south



View from north abutment looking south



# TUNNEL

View from Glen Road south looking north to tunnel



View looking north to tunnel



View from mid-tunnel looking north



# NORTH APPROACH

View from Glen Road north looking south to bridge approach



View of north bridge approach looking south



# SOUTH APPROACH

View from bridge to south approach and tunnel

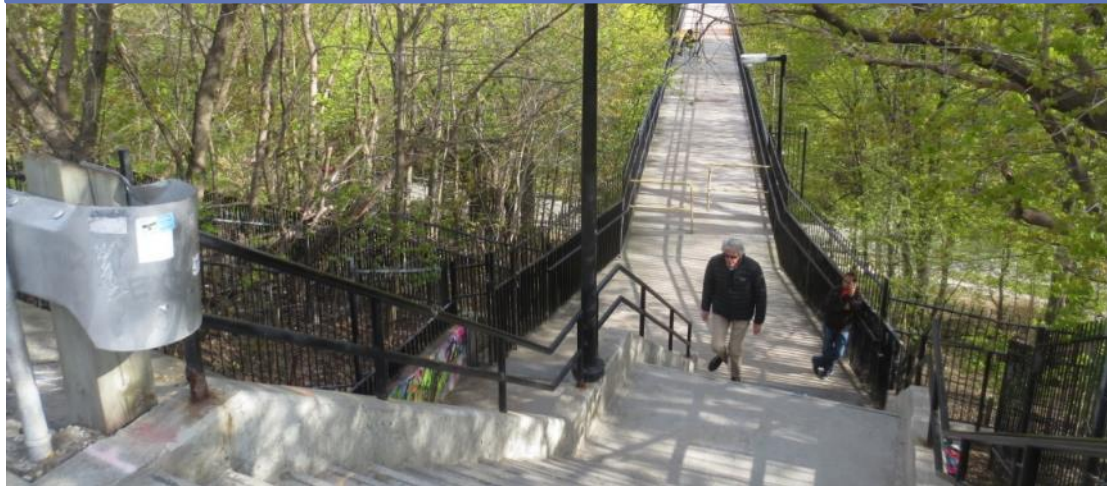


View from tunnel looking north to bridge



# BLOOR STREET EAST

View from north side of Bloor Street East looking north



View from north side of Bloor Street East looking west





# BLOOR STREET EAST

View from south side of Bloor Street East looking west



View from south side of Bloor Street East looking to tunnel and TTC entrance

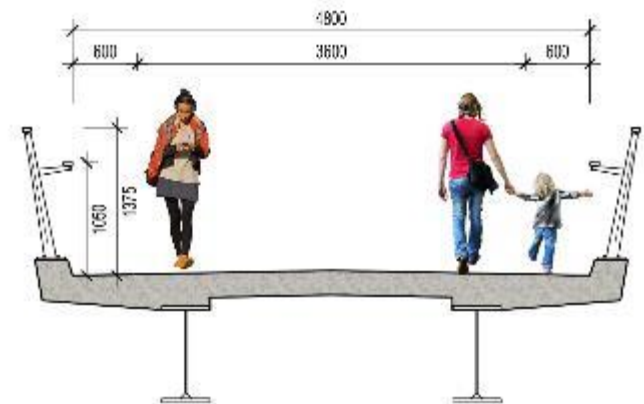
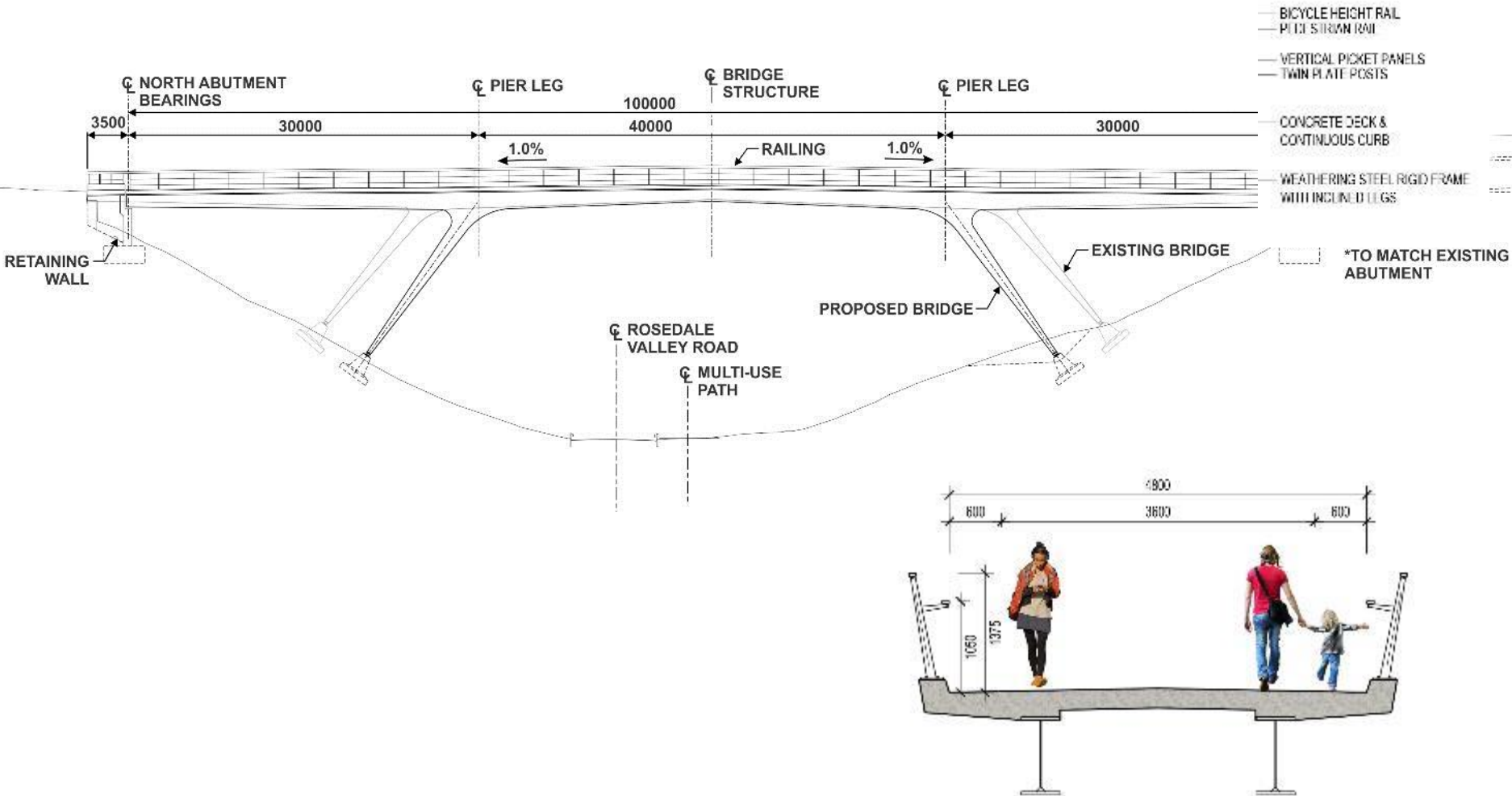


# PROPOSED CONCEPTS

# OVERALL PLAN



# BRIDGE ELEVATION



# EXISTING - ROSEDALE VALLEY

View from Rosedale Valley Road looking east



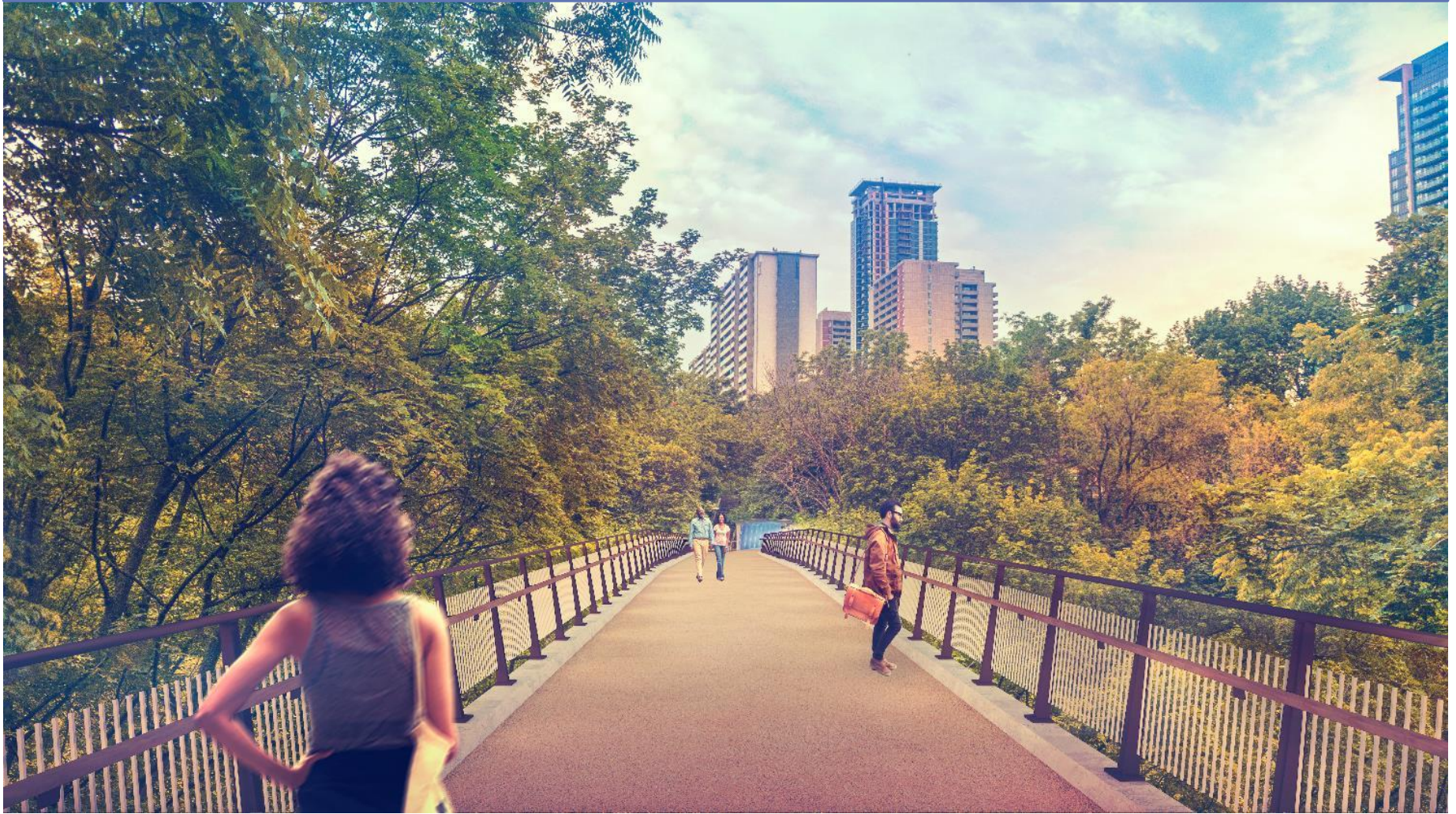
# PROPOSED BRIDGE CONCEPT

Overall view from Rosedale Valley Road looking west



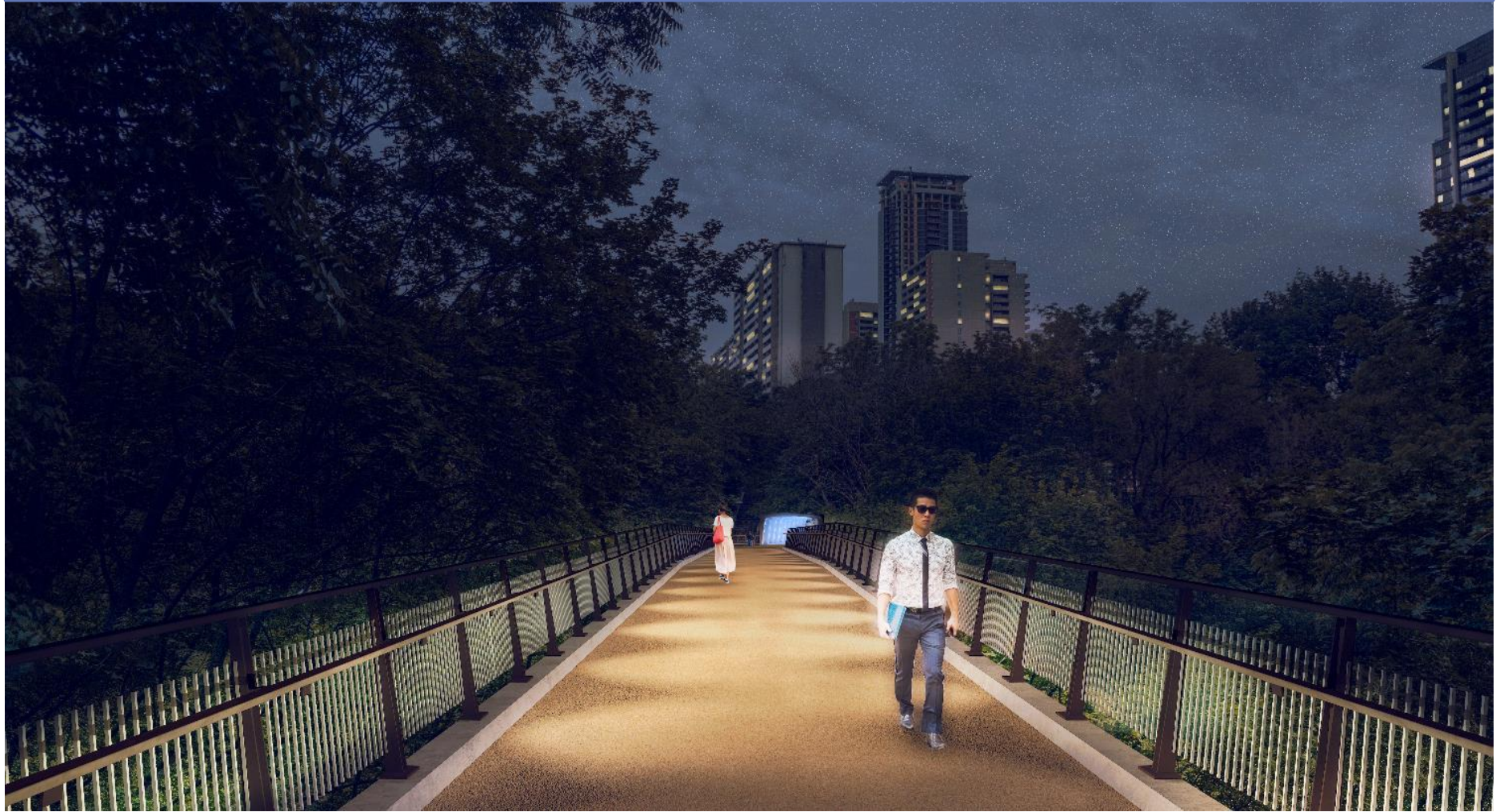
# BRIDGE DECK

View from north side of bridge looking south



# BRIDGE DECK AT NIGHT

View from north side of bridge looking south at night





# TUNNEL CONCEPT

View from tunnel looking north to bridge



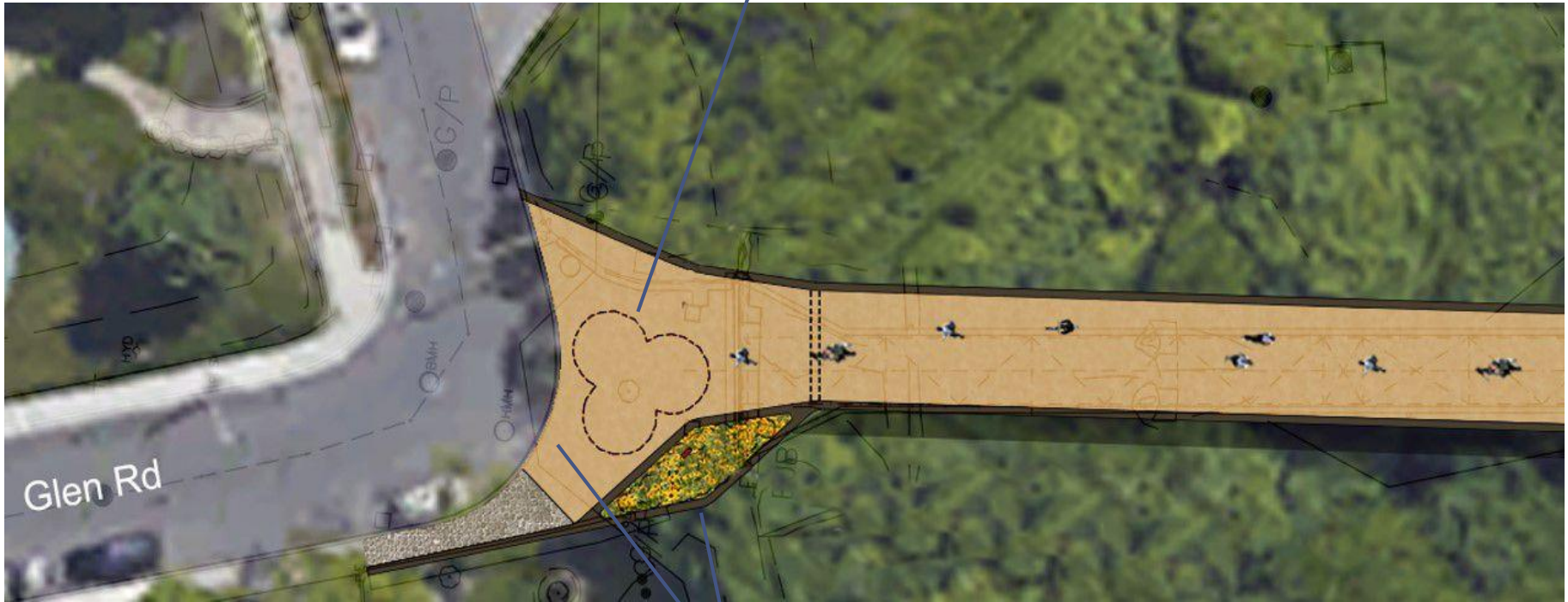
# TUNNEL CONCEPT

View from Glen Road looking north to tunnel



# NORTH APPROACH

Opportunity to increase sightlines to be determined



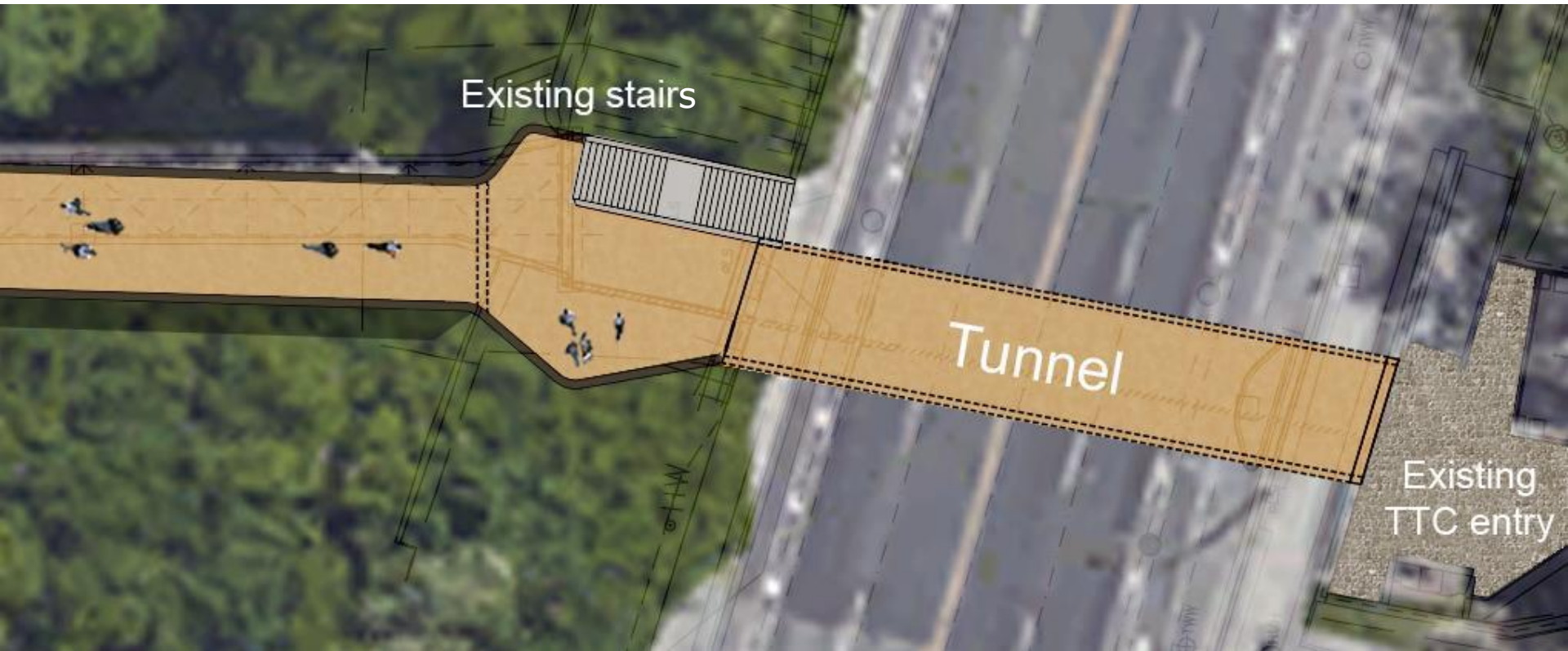
Planter and plaque location to be determined

# NORTH APPROACH

View from Glen Road looking south to north bridge approach

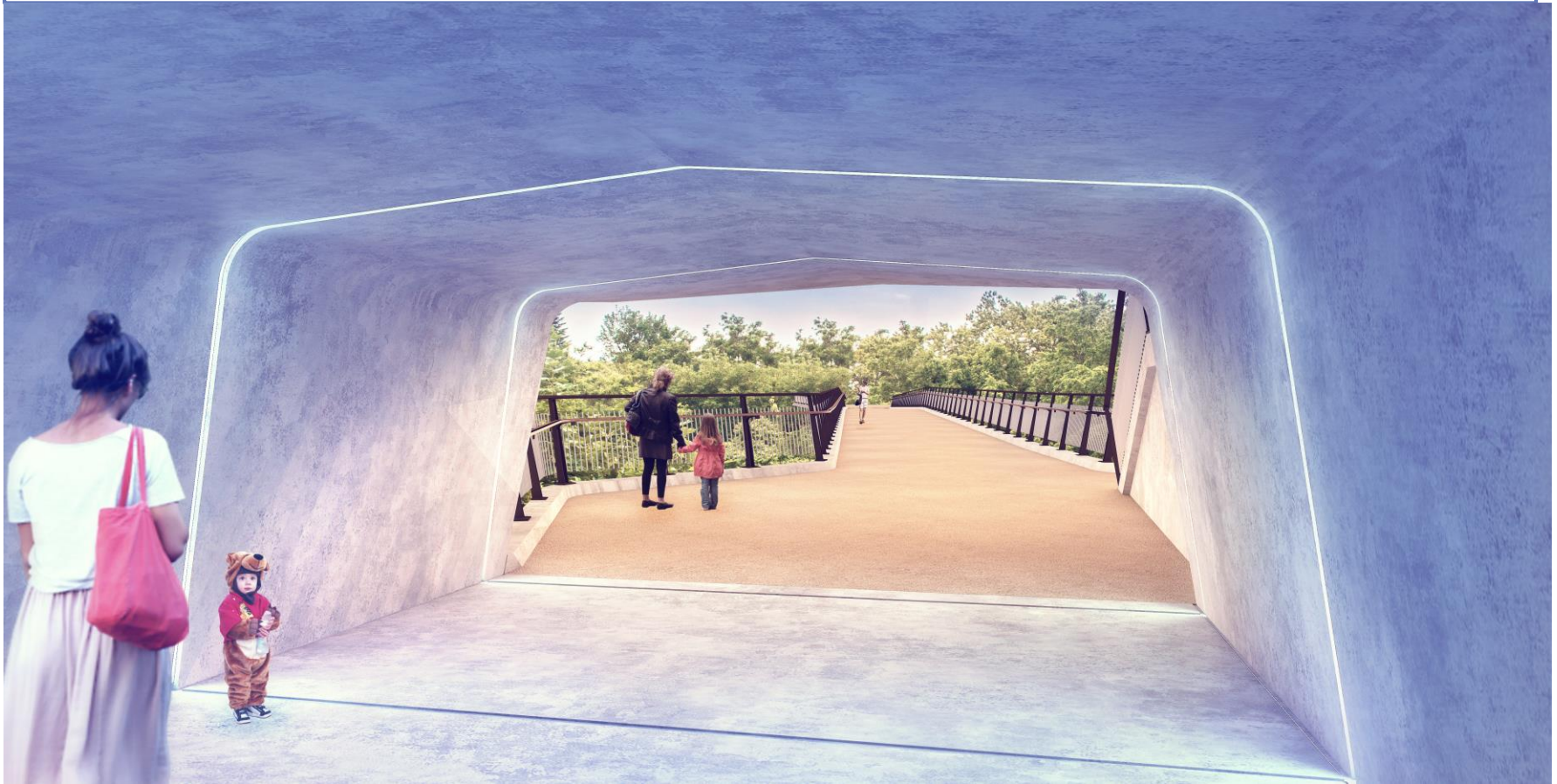


# SOUTH APPROACH – BRIDGE MEETS TUNNEL



# SOUTH APPROACH

View from tunnel looking north to south approach of bridge



# DESIGN ELEMENTS

# DETAILED DESIGN (POST EA)





# DETAILED DESIGN (POST EA)



# INPUT FROM PANEL

---

- Does the Panel have any advice about urban design elements that could be considered to enhance/address heritage values, and context and views to/from Rosedale Valley?
- How can the relationship between the proposed bridge and the existing context (North and South Approaches) be enhanced?
- What design features could be used for the tunnel and its approaches to create a sense of space and a sense of place in relation to the bridge and surrounding area?

# CONCEPTS OVERVIEW

