

# The Yellow Bag Program

## COMMERCIAL COLLECTION GUIDE

### ALL OR NOTHING SERVICE

Recycling and organics collection are provided at no charge only to customers using City-authorized yellow commercial garbage bags for City garbage collection.

#### RECYCLING COLLECTION

- Put items in the bin loose and not bagged (except for shredded paper and plastic retail shopping bags).
- Rinse all containers to remove residue.
- Corrugated cardboard must be in bundles no larger than 120 x 80 x 80 cm (47 x 31.5 x 31.5 inches).
- Do not contaminate recycling with garbage.
- Lid must be closed for collection.

#### HOUSEHOLD HAZARDOUS WASTE (HHW)

- Batteries, bleach, cleaning supplies, fluorescent light bulbs, paint, propane tanks/cylinders, etc. must be taken to a Drop-off Depot for proper disposal.

#### BULKY ITEMS

- Large furniture and appliances are not collected from commercial locations as per City Bylaws. Businesses must make arrangements for the removal of bulky items.

#### GARBAGE COLLECTION

- Garbage must be placed in City-authorized commercial yellow garbage bags. If garbage does not fit in bags, place bundles no larger than 120 x 80 x 80 cm (47 x 31.5 x 31.5 inches) and affix a City-authorized yellow bag tag.
- Waxed cardboard must be in bundles no larger than 120 x 80 x 80 cm (47 x 31.5 x 31.5 inches).
- Bins are available for garbage. Contact 311.

#### Items that don't go in recycling, put these items in the garbage:

- coat hangers
- cooking pans, pots
- cutlery, utensils
- plastic over-wrap (from pop, water bottles, paper towels, toilet paper, etc.)
- textiles (curtains, straps, tablecloths, towels, rags, rugs, etc.)
- rubber (elastic bands, gloves, straps, etc.)



#### GREEN BIN COLLECTION

- Line carts with **clear plastic bags**. Several bags or one large bag may be used.
- Liner bags help keep the cart clean, allow complete tipping and prevent carts from breaking. This is particularly important in the winter when organics can freeze to the inside of the cart.
- Carts that are too heavy to be moved safely and easily will not be collected. Carts that are too heavy may break. If organic waste is dense and heavy, place less in each cart.
- Food scraps may be fresh, frozen, prepared, cooked or spoiled.
- **Remove** organic material from packaging before placing in the cart.
- **Do not put in:**
  - liquids
  - grease
  - packaging
  - rendering waste
- Lid must be closed for collection.

# Put Waste in its Place

## Recycling

### Containers

Rinse to remove residue



Plastic bottles, jugs (water, pop, juice, dish and laundry detergent, shampoo; lids on)



Plastic food jars, tubs, lids (cottage cheese, dips, ice cream, margarine, yogurt)



Milk, juice, soup cartons and boxes (flatten)



Glass bottles, jars (clear or coloured; metal lids are garbage)



Metal, cardboard food and beverage containers (place lid inside can and pinch closed)



Aluminium trays, pie plates, roasting pans



Foam polystyrene (drinking cups, egg cartons, meat trays, takeout containers, electronics packaging)



Plastic retail shopping bags without drawstrings, metal detailing or hard plastic handles (put bags in one bag and tie handles together)

### Paper

Not contaminated with food or chemicals



Boxboard (cereal, detergent, tissue, egg cartons – flatten; remove liners, plastic windows and put in garbage)



Corrugated cardboard (flatten)



Newspapers, flyers

Fine paper (bags, rolls, junk mail, writing and computer paper, envelopes, window envelopes)



Books (soft/hardcover books, telephone directories)



Magazines



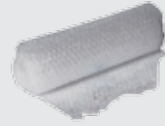
Lottery and scratch tickets

## Garbage

Please do not contaminate recycling or the Green Bin with these items; these belong in garbage.



Plastic cutlery, chopsticks, stir sticks (plastic or wood)



Plastic over-wrap, bubble wrap



Baggies, liner bags (cereal, cookies, crackers)



Clear plastic "clam shell" containers



Black and clear plastic takeout containers



Straws, plastic lids



Coffee cups, lids, sleeves



Plastic gloves



Juice drink pouches



Dryer and disposable mop sheets, baby wipes, make-up pads, cotton tipped swabs, dental floss



Cigarette butts and ashes



Plastic or foil bags, wrap, trays



Popsicle sticks, toothpicks, wood chips, pencil shavings



Gum packages, blister packs



Light bulbs (not CFLs), dishes, drinking glasses



Waxed cardboard boxes



Candles, candle wax



Wooden fruit and vegetable crates

## Green Bin

Take food items out of plastic bags/wrap; too much plastic causes problems.



Bread, toast, cereal, baked goods, pizza



Fruit



Cake, cookies, pie, muffins, candies



Coffee grounds, filters, tea bags



Dairy products, eggs and shells



Pasta, couscous, potatoes, rice, oatmeal, flour, grains



Meat, fish, shellfish



Nuts, nutshells



Vegetables, corn cobs and husks, pumpkins, salads



House plants



Diapers, sanitary products



Paper napkins, paper towels, facial tissues (not soiled with chemicals or make-up)

### NO RENDERING WASTE

Rendering waste is leftover materials after the meat is removed from a slaughtered animal. These items may include the hide, hoofs, feathers or other inedible portion of the carcass.

### NO COOKING OIL, GREASE, LIQUIDS



### Tips

- This poster is a quick reference. Not everything that goes in recycling or garbage is listed here.
- Not sure where something goes? Check: WASTE WIZARD ([toronto.ca/recycle](http://toronto.ca/recycle)) • Call 311.
- Our website translates information into different languages ([toronto.ca/recycle](http://toronto.ca/recycle)).

Thanks for doing it right!