

3.0

VISION FOR THE FUTURE

Chapter 3 builds on the Inventory and Analysis and establishes the Project Vision, Key Components, Guiding Principles, Key Initiatives and Priority Actions. This section also focuses on the development of master plan, program concept options and final master plan.

3.1 PROJECT VISION AND KEY COMPONENTS

PROJECT VISION	KEY COMPONENTS
An Internationally Recognized Botanical Garden in the City of Toronto	<ul style="list-style-type: none">• A Resilient Ecosystem• A Botanical Showcase• Programming, Events and Learning Opportunities• Accessible and Functional• Attractions and Amenities• Financial and Operational Sustainability

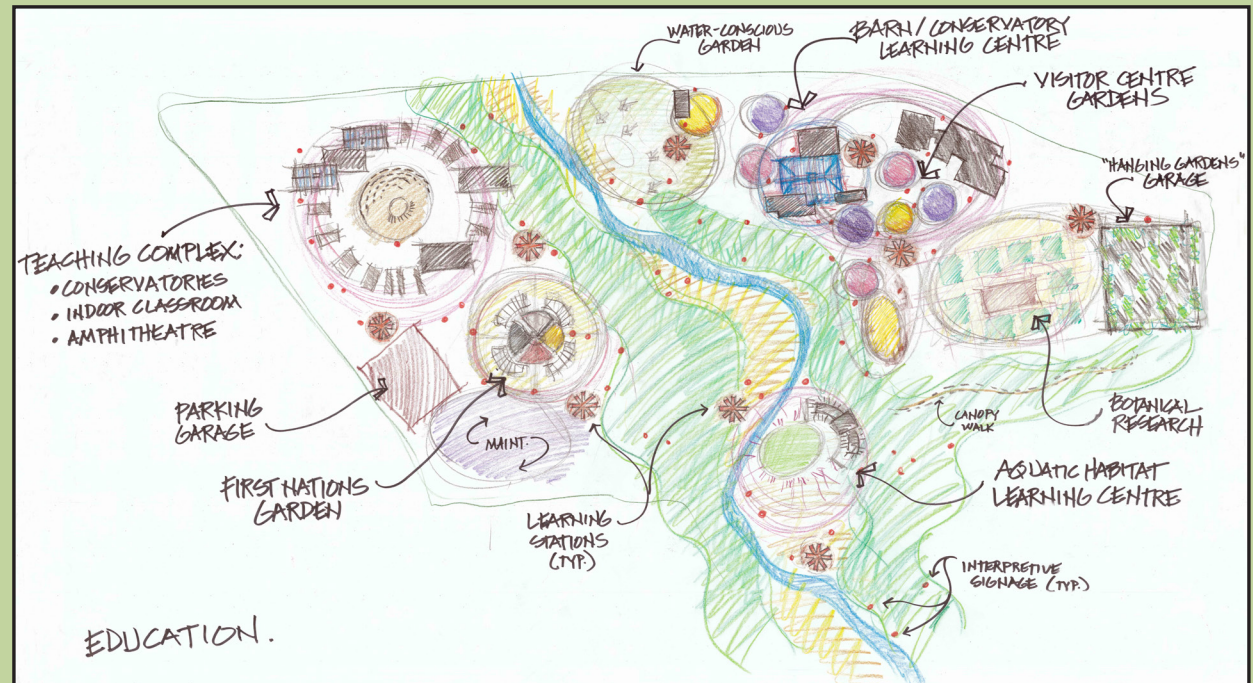
* Project Vision and key Components were developed in consultation with the Project Group and Stakeholder Advisory Group. Comments from the City of Toronto’s project website were summarized and incorporated.

3.2 PROGRAM CONCEPTS

3.2.1 PROGRAM CONCEPTS - EDUCATION

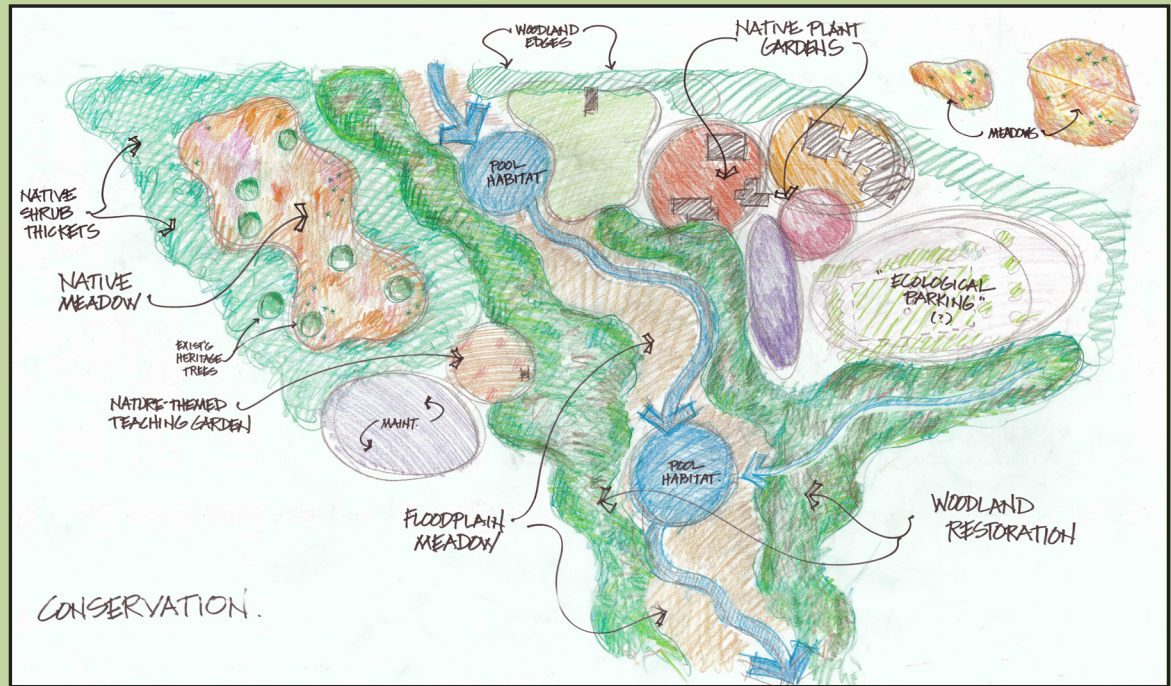
In a workshop exercise including the Project Group in the morning and the Stakeholder Advisory Group in the afternoon, the group was divided into three teams, and each was encouraged to envision a “fantasy” master plan from one of three different perspectives: Education, Conservation, and Beauty and Display.

The Education group recommended two major teaching complexes, along with many small learning stations and interpretive signs scattered throughout the site. On the east side of the Wilket Creek the teaching complex included the existing Visitor Centre, a new conservatory/greenhouse, and the existing historic barn repurposed as a classroom building. A second major complex, on the west side of the creek, included small classroom structures, an amphitheatre, small greenhouses, and a Indigenous garden. In addition, a small aquatic habitat learning centre was recommended in the floodplain adjacent to the Wilket Creek.



3.2.2 PROGRAM CONCEPTS - CONSERVATION

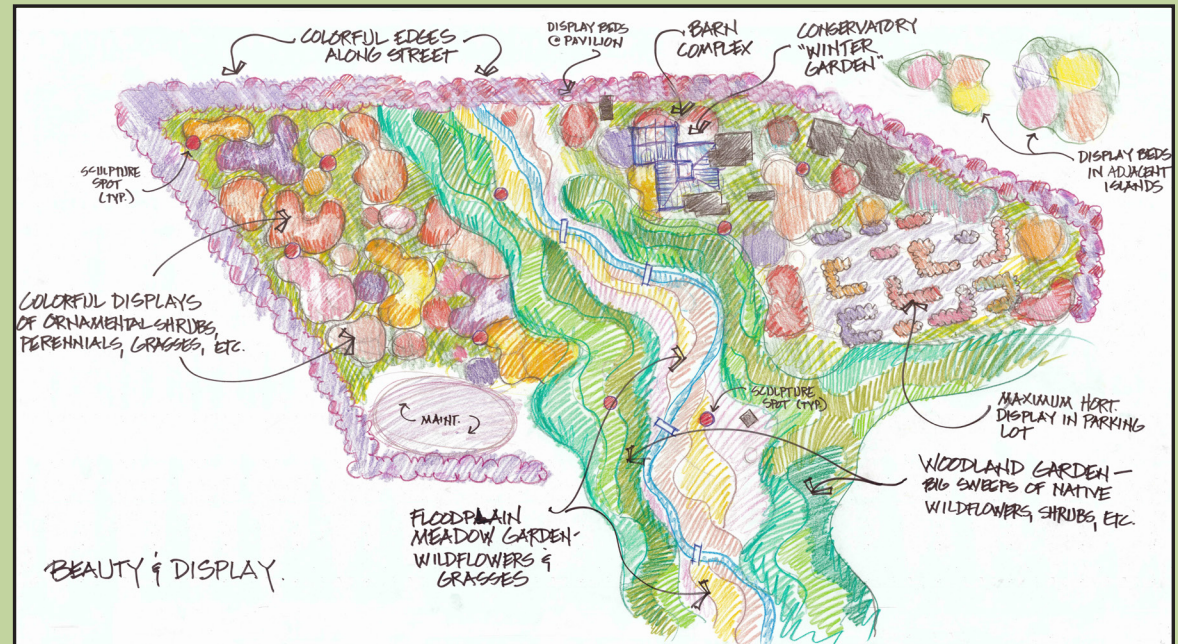
The Conservation group focused on habitat restoration and ecology. A series of native plant gardens was recommended for the area immediately surrounding the existing Visitor Centre and barn, while native habitats would be established or restored in most areas throughout the rest of the site. The upland terrace west of the Wilket Creek was envisioned as a large native meadow enclosed by thickets of native shrubs and trees. Woodland habitats on the slopes along both sides of the creek would be restored, and a major aquatic habitat restoration was imagined for the Wilket Creek and floodplain.



3.2.3 PROGRAM CONCEPTS - BEAUTY AND DISPLAY

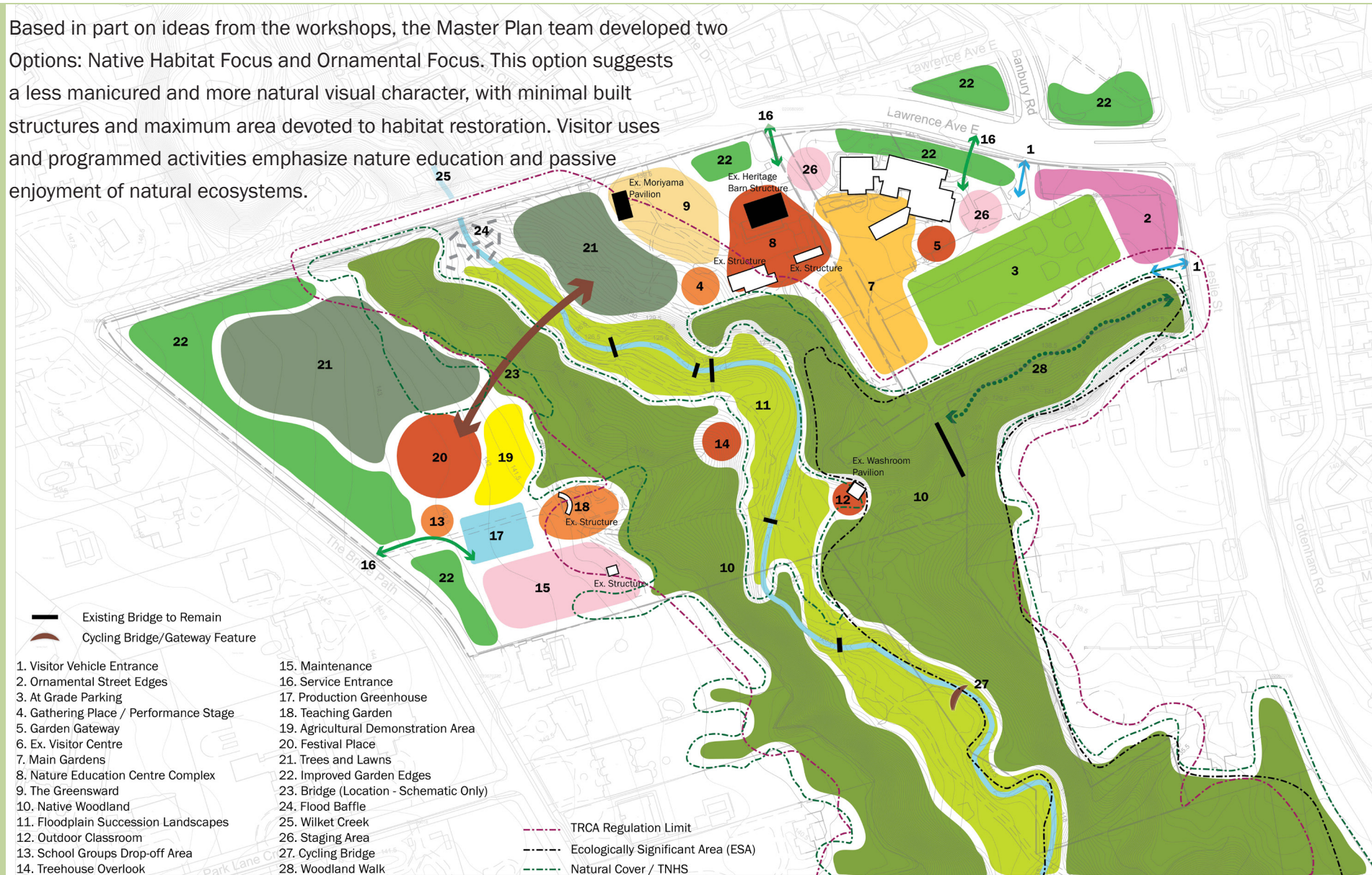
The group that focused on Beauty and Display filled the site with colorful gardens featuring the full range of plants that can be grown in Toronto, including non-native as well as native plants. A major new conservatory and winter garden was recommended adjacent to the existing barn, and a variety of horticultural displays were envisioned throughout the upland terrace east of the creek. The upland area west of the creek would contain colorful displays of ornamental shrubs, perennials and grasses. The wooded slopes and Wilket Creek floodplain would feature native plants arranged in bold sweeps and masses. The boundaries of the site along existing streets would be planted with colorful horticultural displays.

From these, two program concepts were prepared for public discussion. Option A, Native Habitat Focus, emphasized ecological restoration and natural habitats, while Option B, Ornamental Focus, included ecologically sustainable principles but emphasized the more ornamental aspects of garden design.



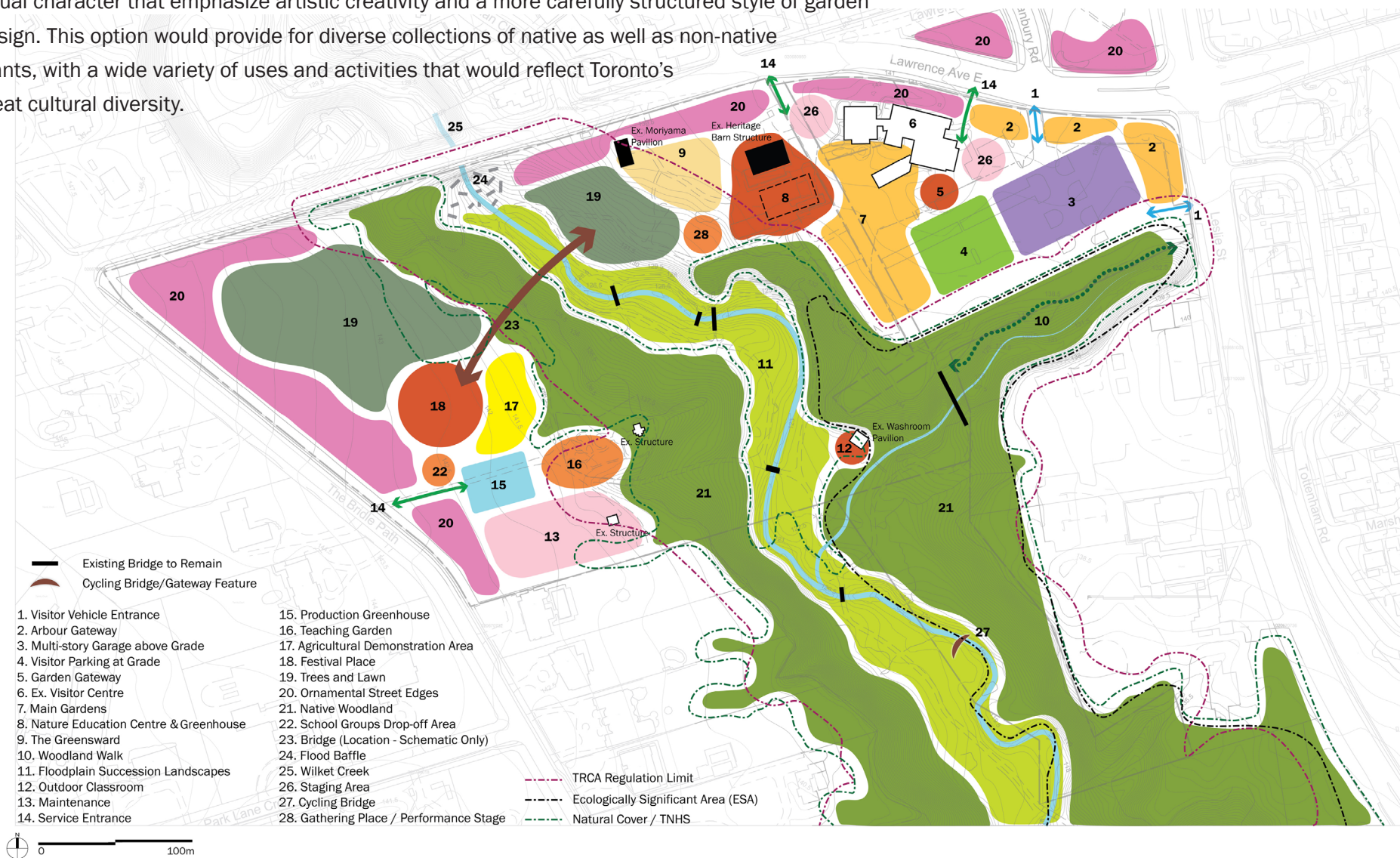
3.2.4 OPTION A: NATIVE HABITAT FOCUS

Based in part on ideas from the workshops, the Master Plan team developed two Options: Native Habitat Focus and Ornamental Focus. This option suggests a less manicured and more natural visual character, with minimal built structures and maximum area devoted to habitat restoration. Visitor uses and programmed activities emphasize nature education and passive enjoyment of natural ecosystems.



3.2.5 OPTION B: ORNAMENTAL FOCUS

This option recommends using ecological principles of design and maintenance throughout the site, with a visual character that emphasize artistic creativity and a more carefully structured style of garden design. This option would provide for diverse collections of native as well as non-native plants, with a wide variety of uses and activities that would reflect Toronto's great cultural diversity.



3.3 SUMMARY DIAGRAM: THE “BIG MOVES”

