

# MASTER PLAN DEVELOPMENT

Edwards Gardens and  
Toronto Botanical Garden  
Master Plan & Management Plan

June 7th, 2017 | Public Open House # 3





# Public Open House #3 Agenda

6:00 – 8:00

- 6:00pm – 6:15pm – Arrival & Public Review of Display Panels
- 6:15pm-6:45pm – Presentation of the Draft Concept
- 6:45pm-6:50pm – Break
- 6:50pm – 7:20pm – Public Town Hall Discussion of Draft Concept
- 7:20pm-7:50pm – Curated Q&A Panel
- 7:50pm-8:00pm – Wrap Up & Thank You

# Study & Engagement Process

## STUDY PROCESS

PHASE 1  
Project Start-Up

PHASE 2  
Background Review,  
Site Inventory &  
Analysis

PHASE 3  
Concept Design  
Options

We Are  
Here

PHASE 4  
Design  
Development,  
Feasibility & Phasing

PHASE 5  
Management  
Plan

## ENGAGEMENT PROCESS

Communications  
& Consultation  
Plan

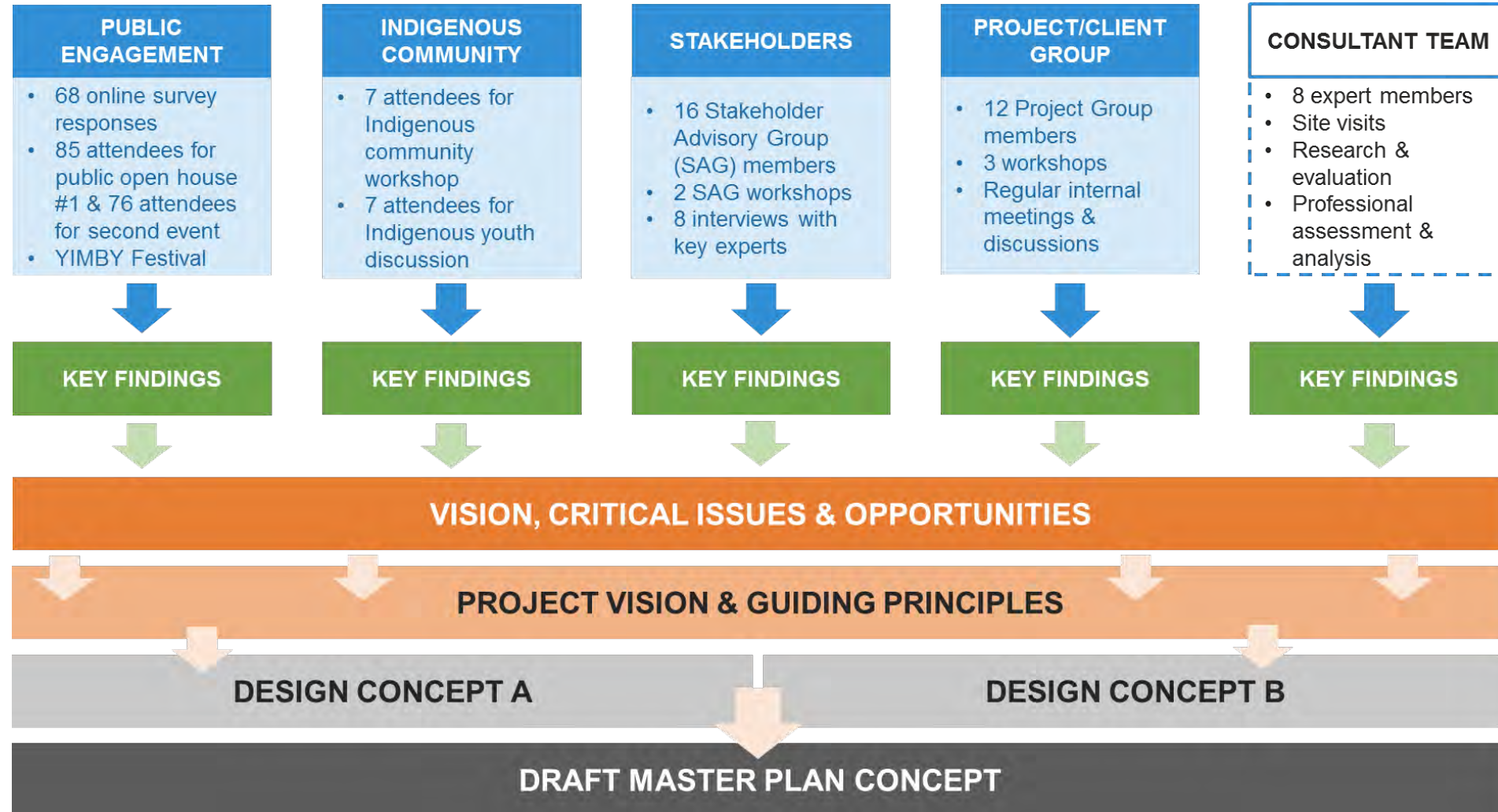
Issues,  
Opportunities,  
Needs & Desires

Vision/Programs  
& Design Options

Draft Concept  
Design

Final Concept  
Design &  
Management  
Plan

# Engagement Process To-date



# Project Vision

## PROJECT VISION

*To create an internationally recognized botanical garden in the City of Toronto.*

## GUIDING PRINCIPLES

1. Celebrate a Unique Sense of Place
2. Contribute to a Resilient Ecosystem to Enhance Ecological Services
3. Improve Accessibility
4. Establish a Culture of Stewardship to Reconnect with the Land, Exchange Earth Knowledge and Demonstrate Green Infrastructure
5. Improve Operational Functionality
6. Improve Amenities
7. Improve Facilities to Expand Programming, Education, Activities and Ceremonies
8. Enhance Visitor Experience



# Summary of All Consultation

## VISION

- Combined & expanded Botanical Garden
- Destination
- Beautiful displays & horticultural excellence
- Welcoming, community-oriented & inclusive
- Accessible
- Reflects Toronto's Indigenous heritage and diversity

## OPPORTUNITIES

- Natural setting & connectivity of the ravine system
- Increase research, education, & conservation impact
- Growing demand for urban green spaces, gathering places & natural experiences
- East-end visitor attraction cluster
- Improved transport links via Eglinton Cross-Rail
- Elevate natural, cultural & historical characteristics

## NEEDS

- Heal the Land – revitalization, culture of stewardship
- Address Safety Issues – flooding, pedestrians & cyclists
- Improved Access – surfaces, inclines, distances, closures
- Indoor Experiences – particularly in winter months
- Improved continuity of visitor experience between gardens
- Improved wayfinding & signage
- Improved visitor amenities – toilets, café, benches

# Phase 3 Program Concept Options

## NATIVE HABITAT FOCUS



## ORNAMENTAL FOCUS



February 2017



# Key Takeaways Phase 3 Consultation

- *Education, conservation, research and display are central* to the purpose of the Gardens, and initiatives that help to fulfill this should be prioritized
- *A hybrid approach* which mixes both native habitat focus and ornamental plantings should be developed as it has the greatest appeal to locals and visitors and the potential to provide a unique visitor experience.





# Key Takeaways Phase 3 Consultation

- The *visitor experience and associated visitor amenities must be updated and expanded* to achieve the high level of quality that local visitors and tourists have come to expect from botanic garden attractions.
- Plans should *create a variety of public and more private spaces* across the Gardens (both indoor and outdoor) for programs, events and other engagement opportunities to encourage people to gather, learn and reconnect with nature.

# Key Takeaways Phase 3 Consultation

- Ensure *inclusivity and accessibility for all*.
- *Expand for better connections with the ravine* to the north and south where possible, as well as *increase connections into the public transit system and other local area attractions*.
- Further consideration is required to *develop creative, realistic, and sustainable parking and cycling solutions* that address current needs, as well as perceived issues.



# Workshop Goals

- ***Present*** the composite draft concept.
- ***Address*** your questions and concerns.
- ***Gather*** your comments on plans before they are finalized.

# Phase 3 Program Concept Options – February 2017

## NATIVE HABITAT FOCUS

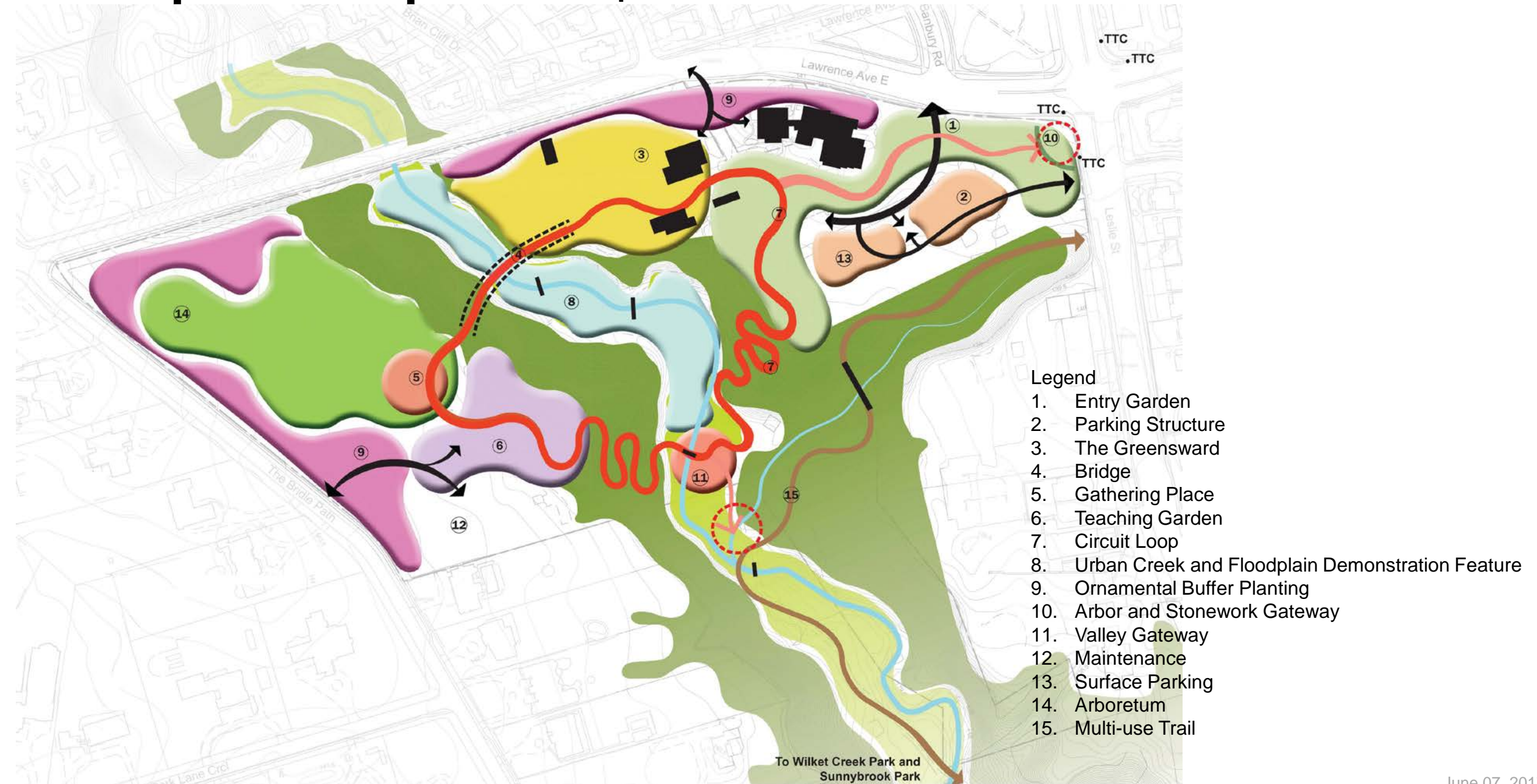


## ORNAMENTAL FOCUS





# Concept Development – April 2017



# Major Components







# Master Plan



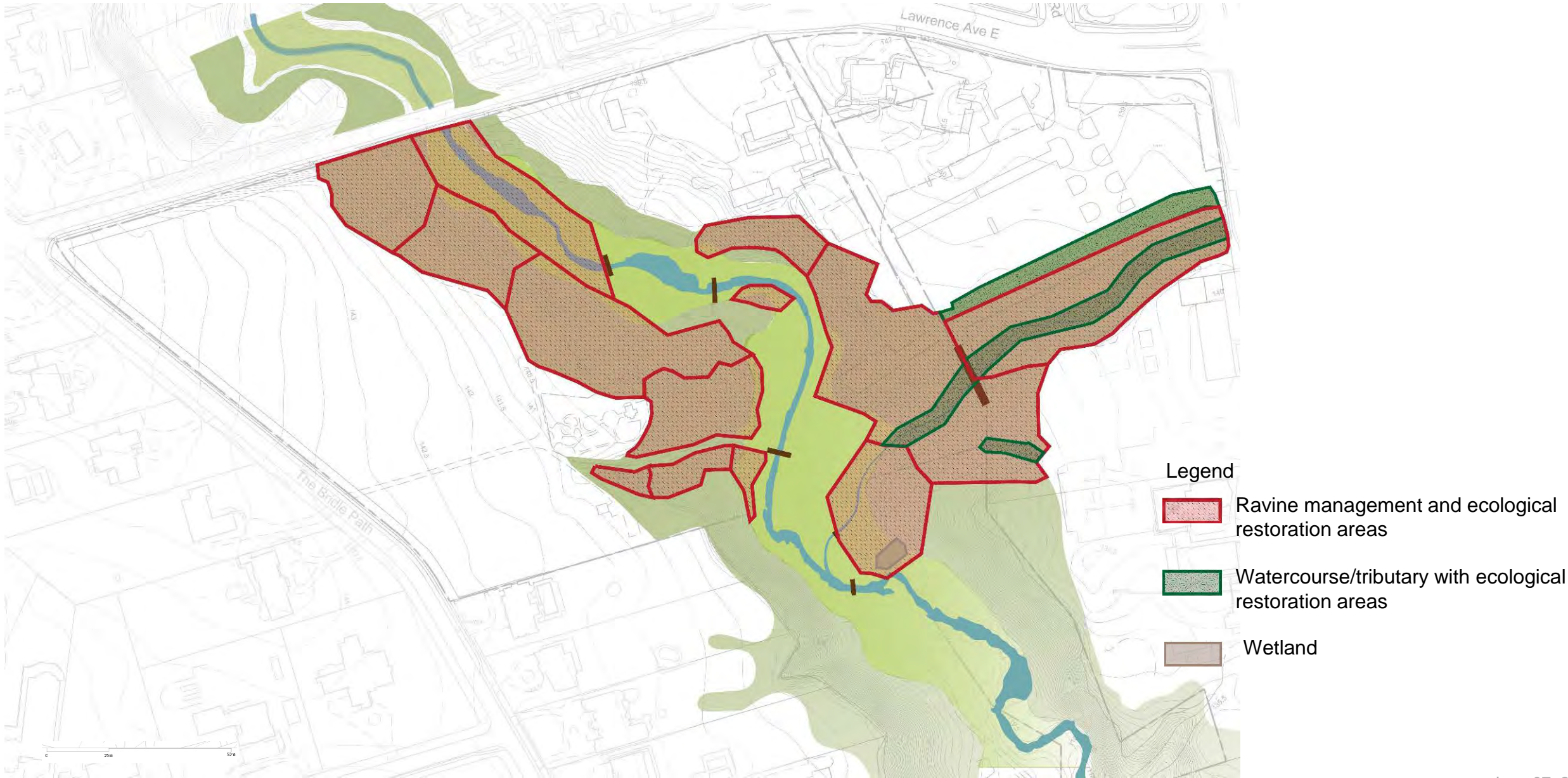
# Restoration: Creek + Floodplain + Valley



- Legend
- 1. Creek
  - 2. Floodplain
  - 3. Wooded Slope



# Restoration: Ecology Net Gain Area



# Restoration: Riparian and Woodland Planting List - 1

## TREES

- ☐ silver maple (*Acer saccharinum*)
- ☐ sycamore (*Platanus occidentalis*) – ensure certified seed source
- ☐ balsam poplar (*Populus balsamifera*)
- ☐ black willow (*Salix nigra*) – ensure certified seed source
- ☐ eastern white cedar (*Thuja occidentalis*)
- ☐ white elm (*Ulmus americana*) – Dutch-elm disease resistant cultivars are acceptable

## SHRUBS

- ☐ chokeberry (*Aronia melanocarpa*)
- ☐ red osier dogwood (*Cornus stolonifera*)
- ☐ purple raspberry (*Rubus odoratus*)
- ☐ Bebb's willow (*Salix bebbiana*)
- ☐ pussy willow (*Salix discolor*) – ensure certified seed source
- ☐ woolly-headed willow (*Salix eriocephala*)
- ☐ sandbar willow (*Salix exigua*)
- ☐ slender willow (*Salix petiolaris*)
- ☐ common elderberry (*Sambucus canadensis*)
- ☐ meadowsweet (*Spiraea alba*)

# Restoration: Riparian and Woodland Planting List - 2

## VINES

- ☐ Virgin's bower (*Clematis virginiana*)
- ☐ Thicket creeper (*Parthenocissus inserta*)
- ☐ Virginia creeper (*Parthenocissus quinquefolia*)

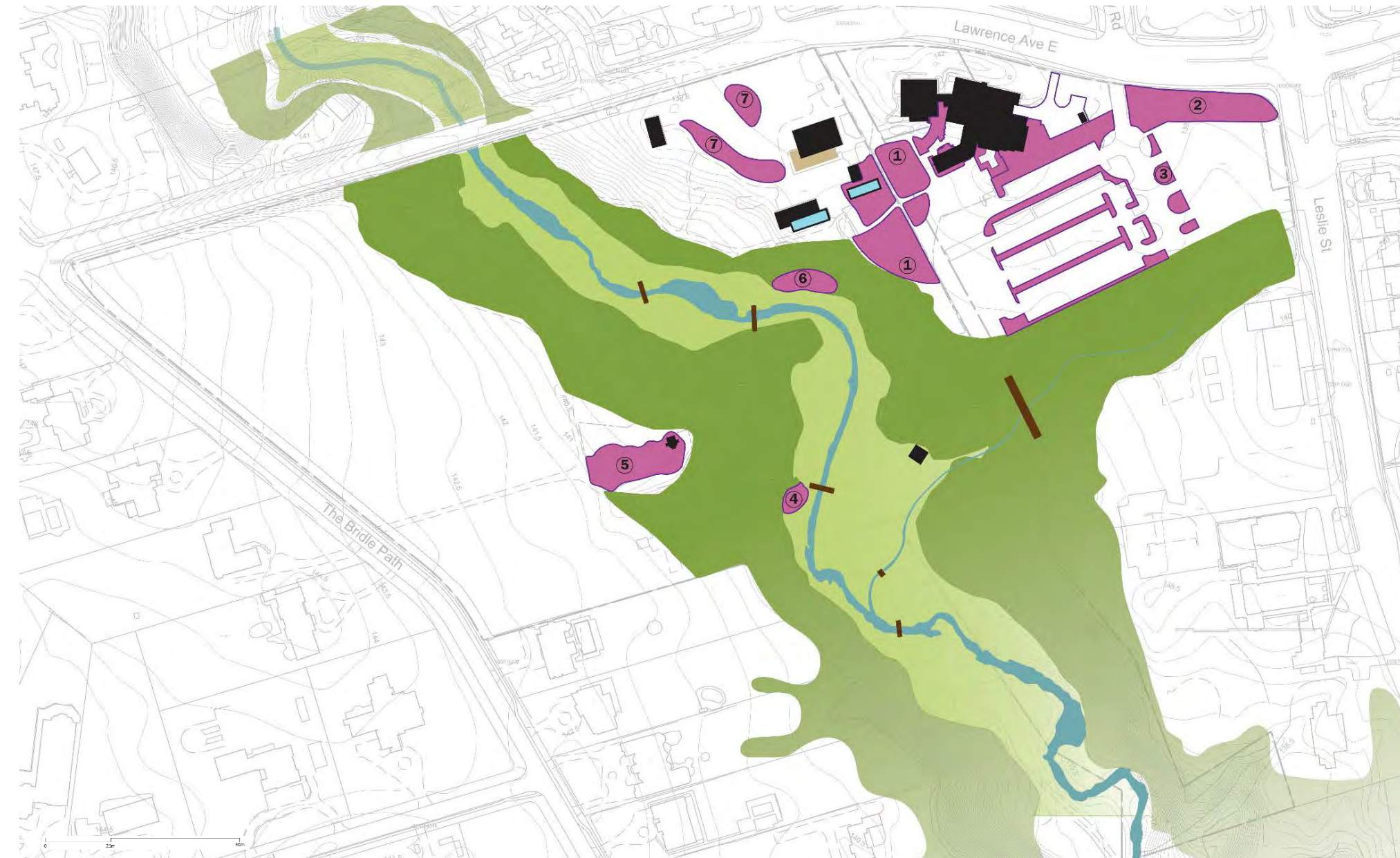
## HERBACEOUS

- ☐ Canada anemone (*Anemone canadensis*)
- ☐ Hemp dogbane (*Apocynum cannabinum*)
- ☐ swamp milkweed (*Asclepias incarnata*)
- ☐ river bulrush (*Bolboschoenus fluviatilis*)
- ☐ marsh marigold (*Caltha palustris*)
- ☐ Gray's sedge (*Carex grayi*)
- ☐ fox sedge (*Carex vulpinoidea*)
- ☐ white turtlehead (*Chelone glabra*)
- ☐ flat-topped white aster (*Doellingeria umbellata*)
- ☐ riverbank wildrye (*Elymus riparius*)
- ☐ white snakeroot (*Eupatorium rugosum*)
- ☐ spotted Joe Pye weed (*Eutrochium maculatum*)
- ☐ blue flag iris (*Iris versicolor*)
- ☐ Torrey's rush (*Juncus torreyi*)
- ☐ Michigan lily (*Lilium michiganense*)

- ☐ cardinal flower (*Lobelia cardinalis*)
- ☐ great blue lobelia (*Lobelia siphilitica*)
- ☐ starry false Solomon's-seal (*Maianthemum stellatum*)
- ☐ ostrich fern (*Matteuccia struthiopteris*)
- ☐ beebalm (*Monarda didyma*)
- ☐ sensitive fern (*Onoclea sensibilis*)
- ☐ royal fern (*Osmunda regalis*)
- ☐ cinnamon fern (*Osmundastrum cinnamomeum*)
- ☐ cut-leaved coneflower (*Rudbeckia laciniata*)
- ☐ soft-stemmed bulrush (*Schoenoplectus tabernaemontani*)
- ☐ dark-fruited bulrush (*Scirpus atrovirens*)
- ☐ barber-pole bulrush (*Scirpus microcarpus*)
- ☐ narrow-leaved blue-eyed grass (*Sisyrinchium angustifolium*)
- ☐ prairie cordgrass (*Spartina pectinata*)
- ☐ swamp aster (*Symphyotrichum puniceum*)
- ☐ tall meadow-rue (*Thalictrum pubescens*)
- ☐ blue vervain (*Verbena hastata*)



# Gardens - Existing



## Legend

1. Existing gardens
2. Woodland garden
3. Rain garden in parking lot
4. Rhododendron garden
5. Teaching garden
6. Rock garden
7. Ornamental display gardens



# Gardens - New

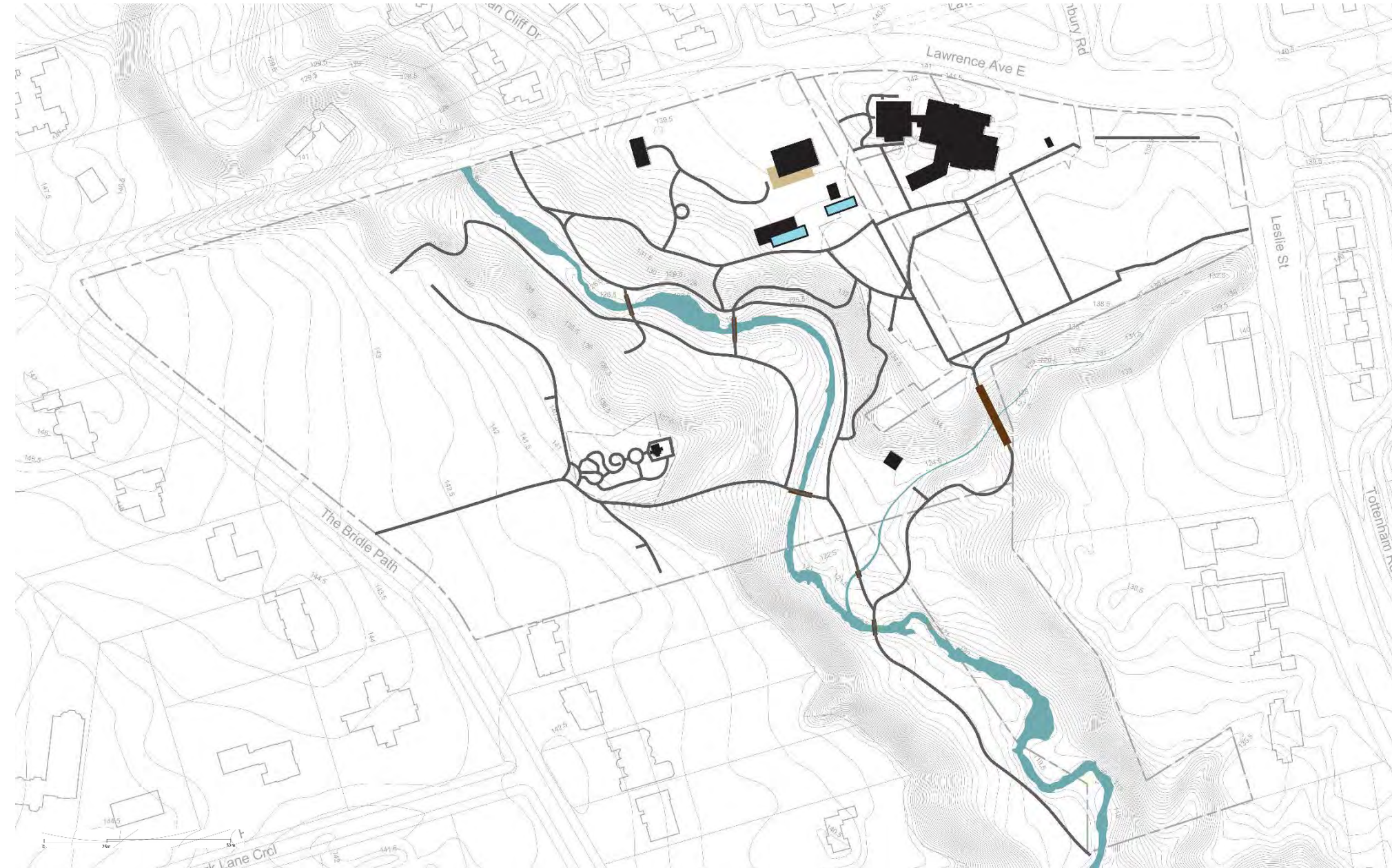


## Legend

1. Entry Garden Expansion
2. Entry Garden
3. Entry Plaza
4. Existing Garden
5. Garden Expansion
6. Woodland Garden
7. Garden Courtyard
8. Multi-use garden
9. The Greensward
10. Teaching Garden
11. Arboretum
12. Woodland Gardens



# Circulation - Existing

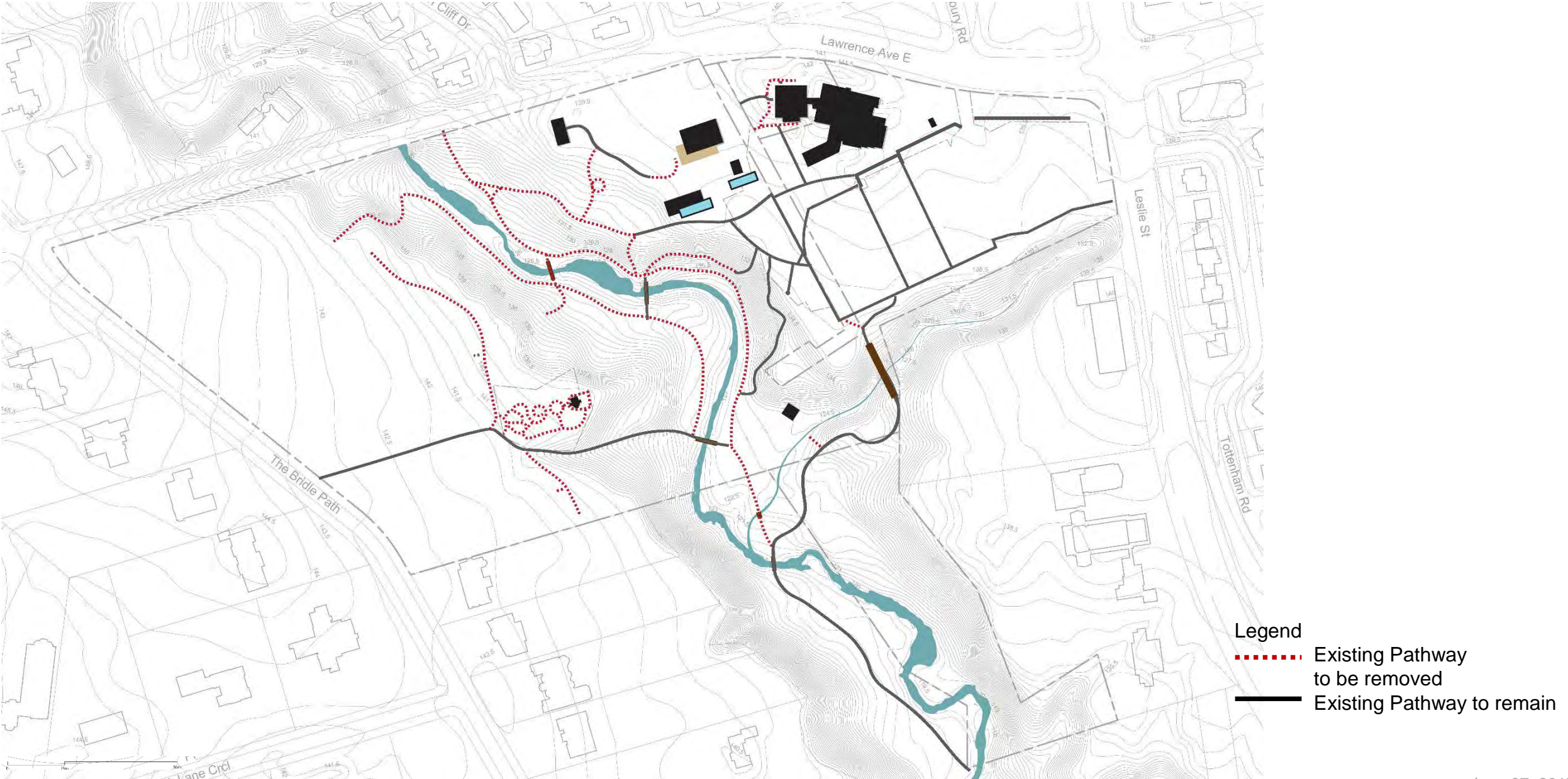


Legend

Existing Pathway

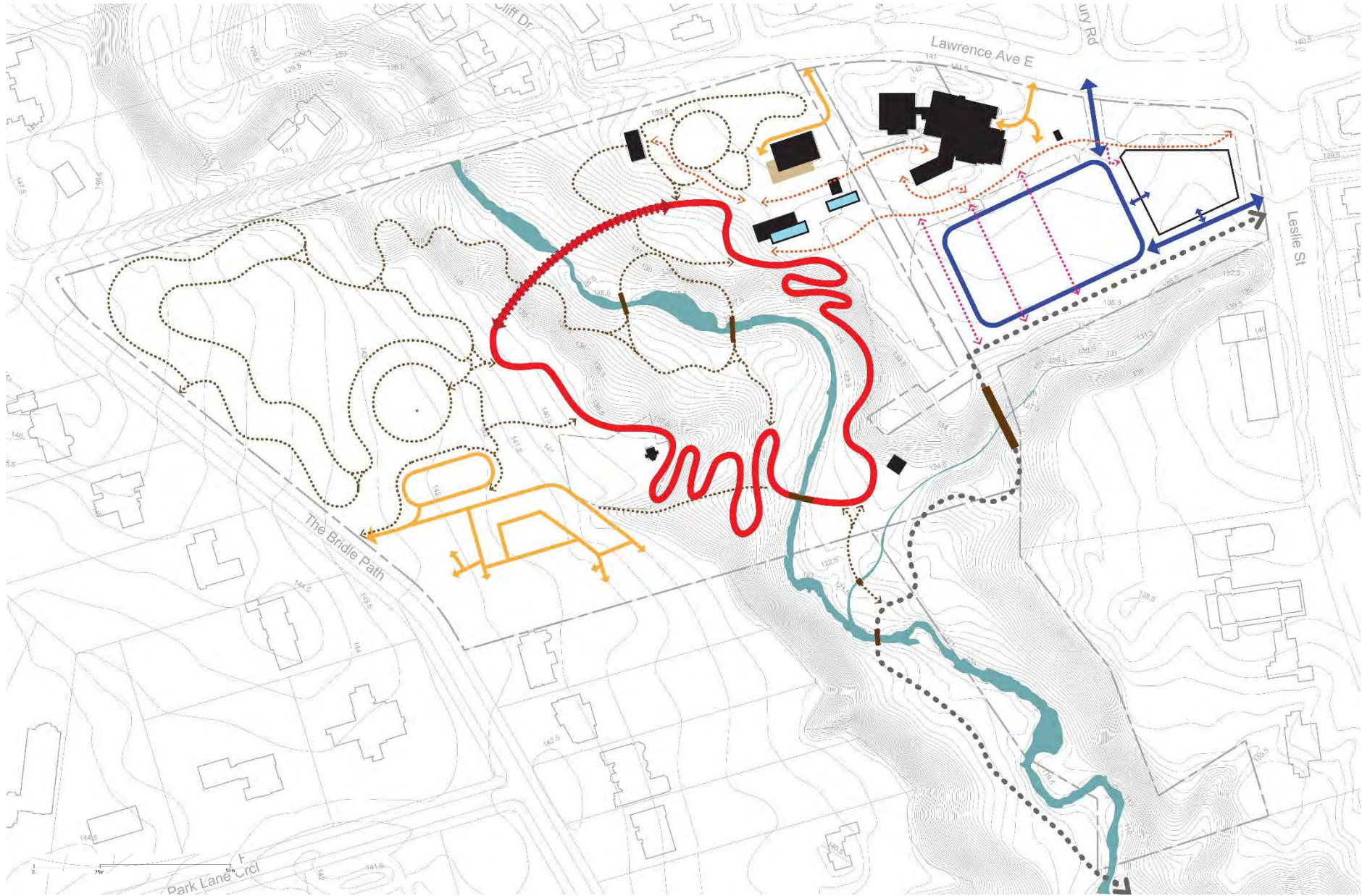


# Circulation – Existing to be Removed and Retained





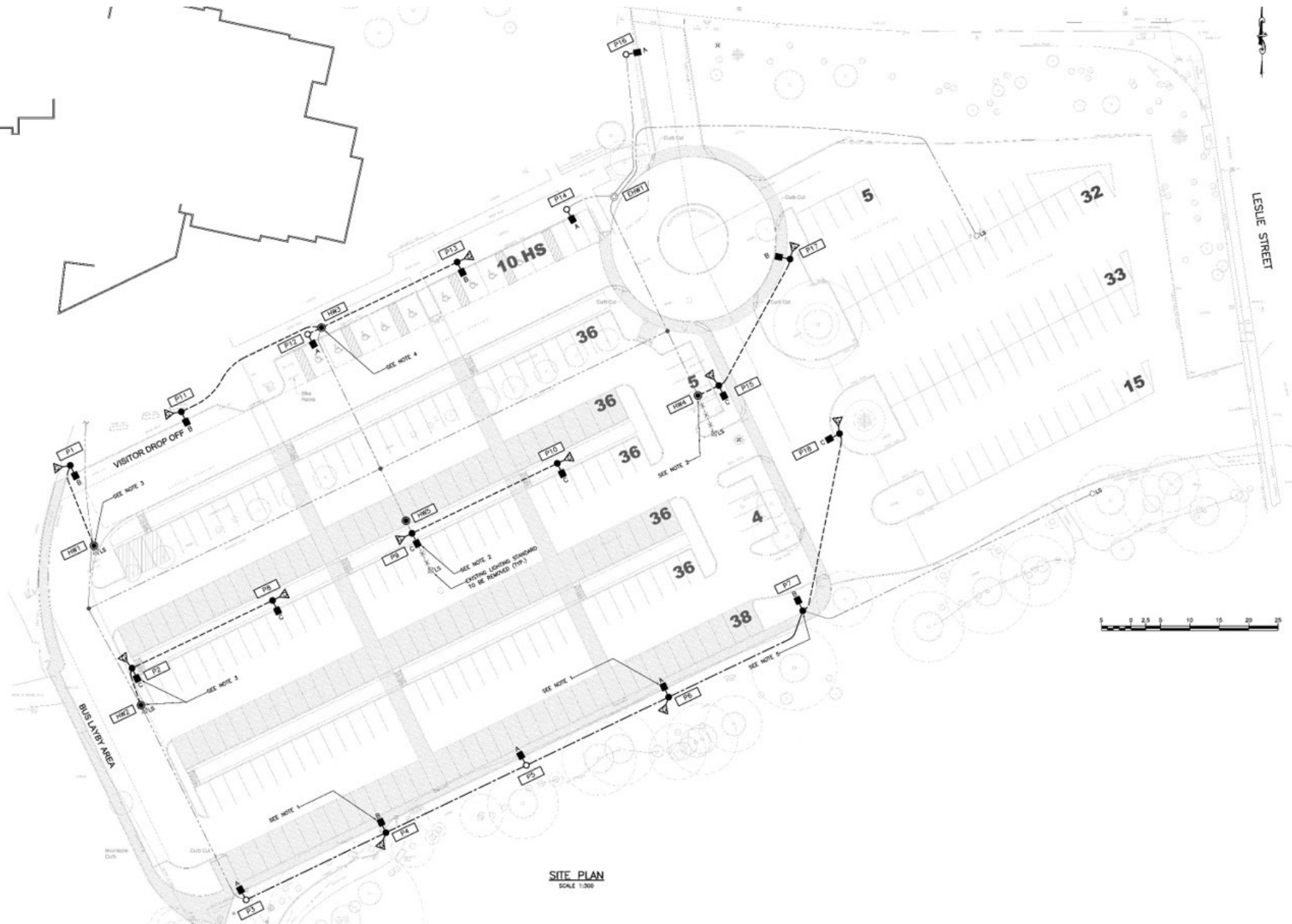
# Circulation - New



- Legend
- Proposed Bridge
  - Existing Bridge to Remain
  - Circuit Loop
  - Primary Path
  - Secondary Path
  - Pedestrian Access in parking Lot
  - Multi-use Trail
  - Vehicular Circulation
  - Service

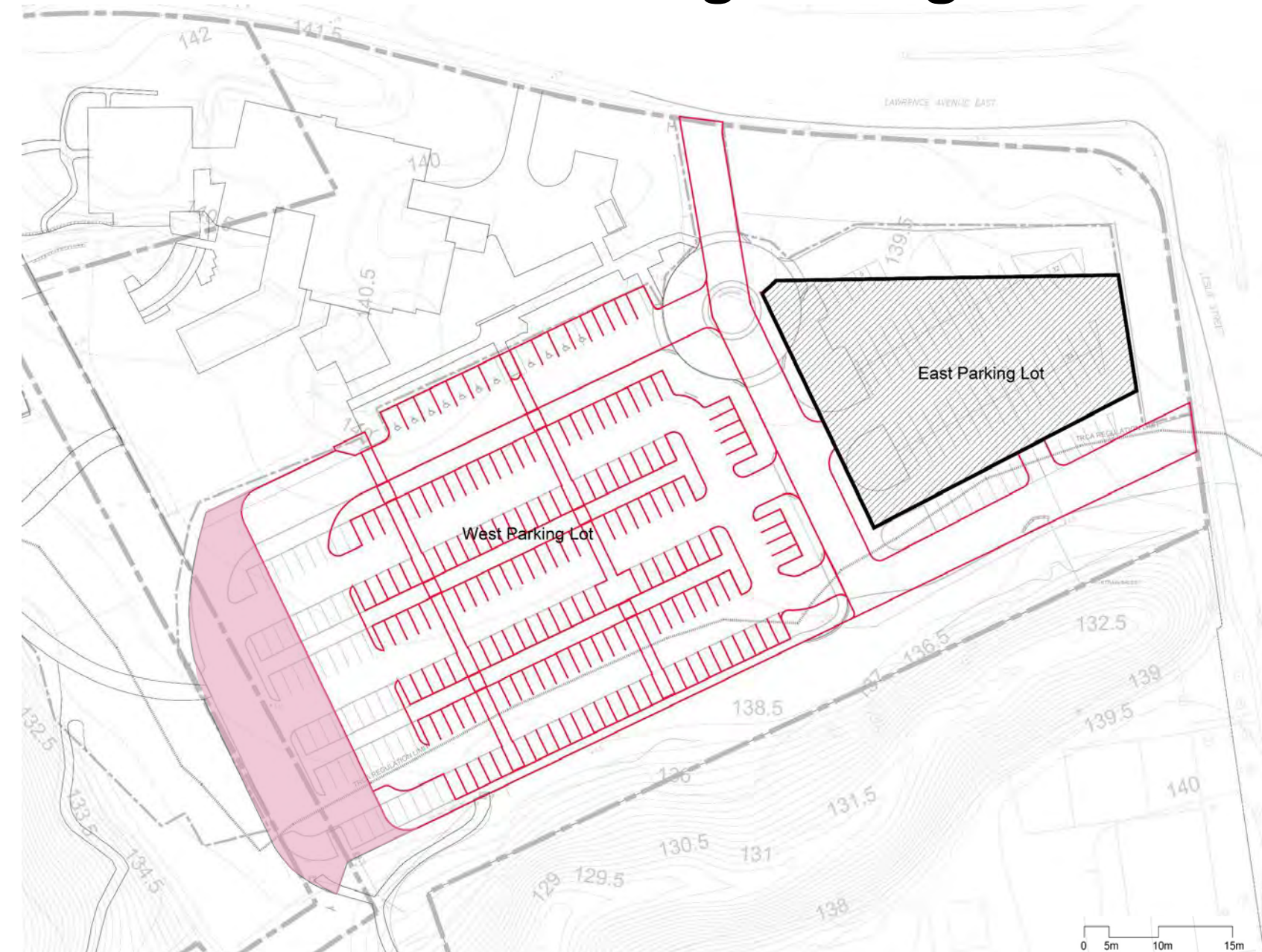


# Facilities – Existing Surface Parking



Existing surface parking:  
**316**

# Facilities – New Parking Arrangement



## Existing Parking

East Parking Lot - 85

West Parking Lot – 231

Total No. of Existing Parking – 316

## Proposed Parking

East Parking Lot (Parking Structure) – 277

West Parking Lot (Surface Parking) – 177

Total No. of Proposed Parking – 454

**Total Increase in Parking - 138**

## Legend

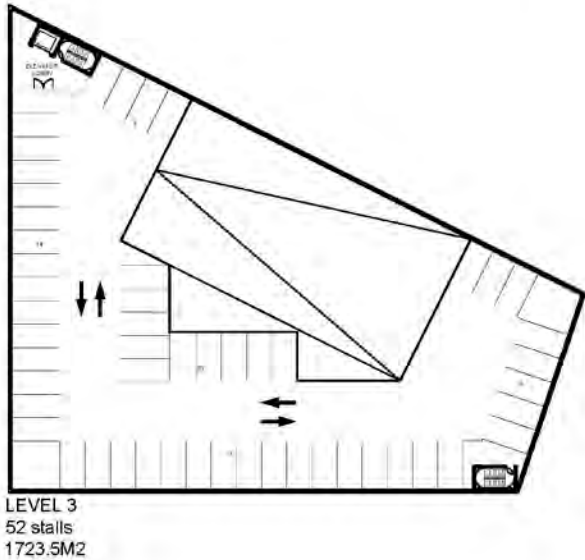
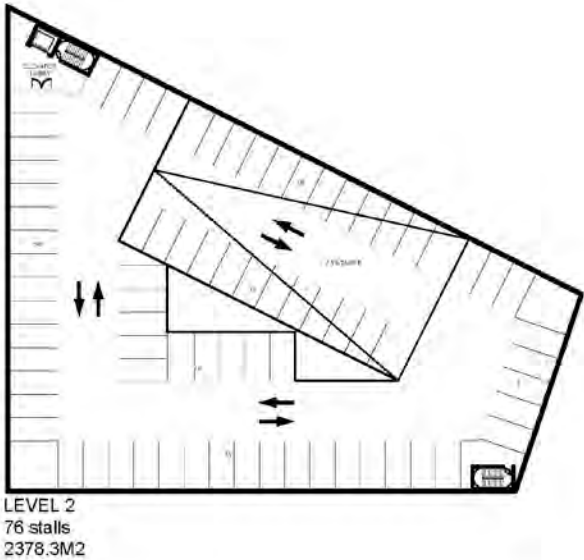
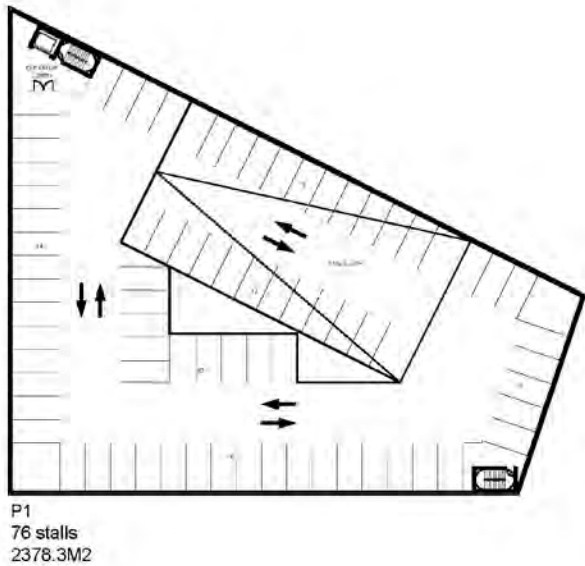
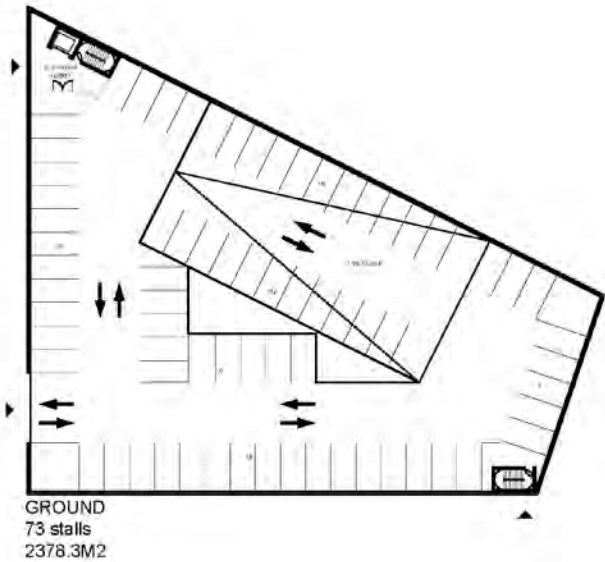
 Proposed Parking

 New Garden Expansion

 Proposed Parking Structure

# Facilities – New Parking Structure

TOTAL  
277 STALLS  
10 581.9 m2



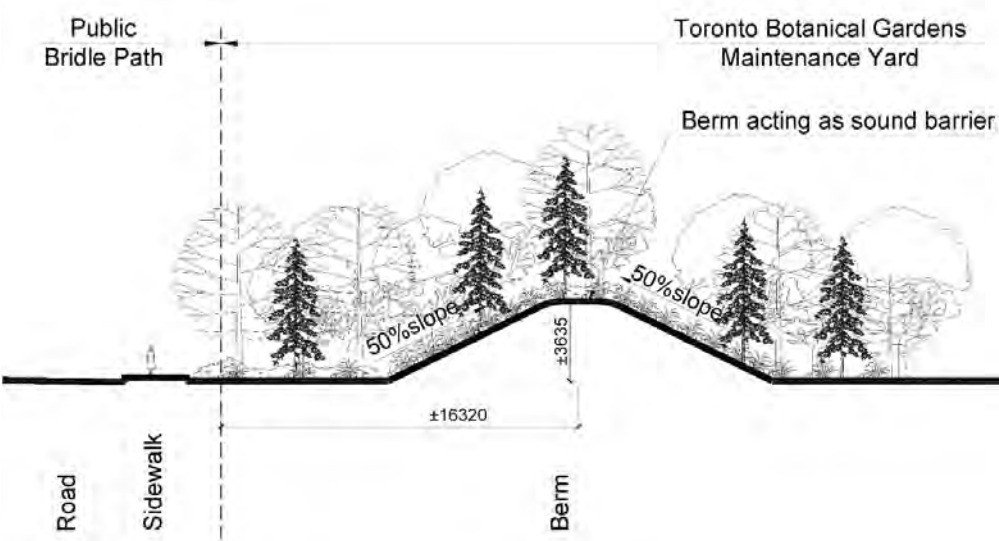
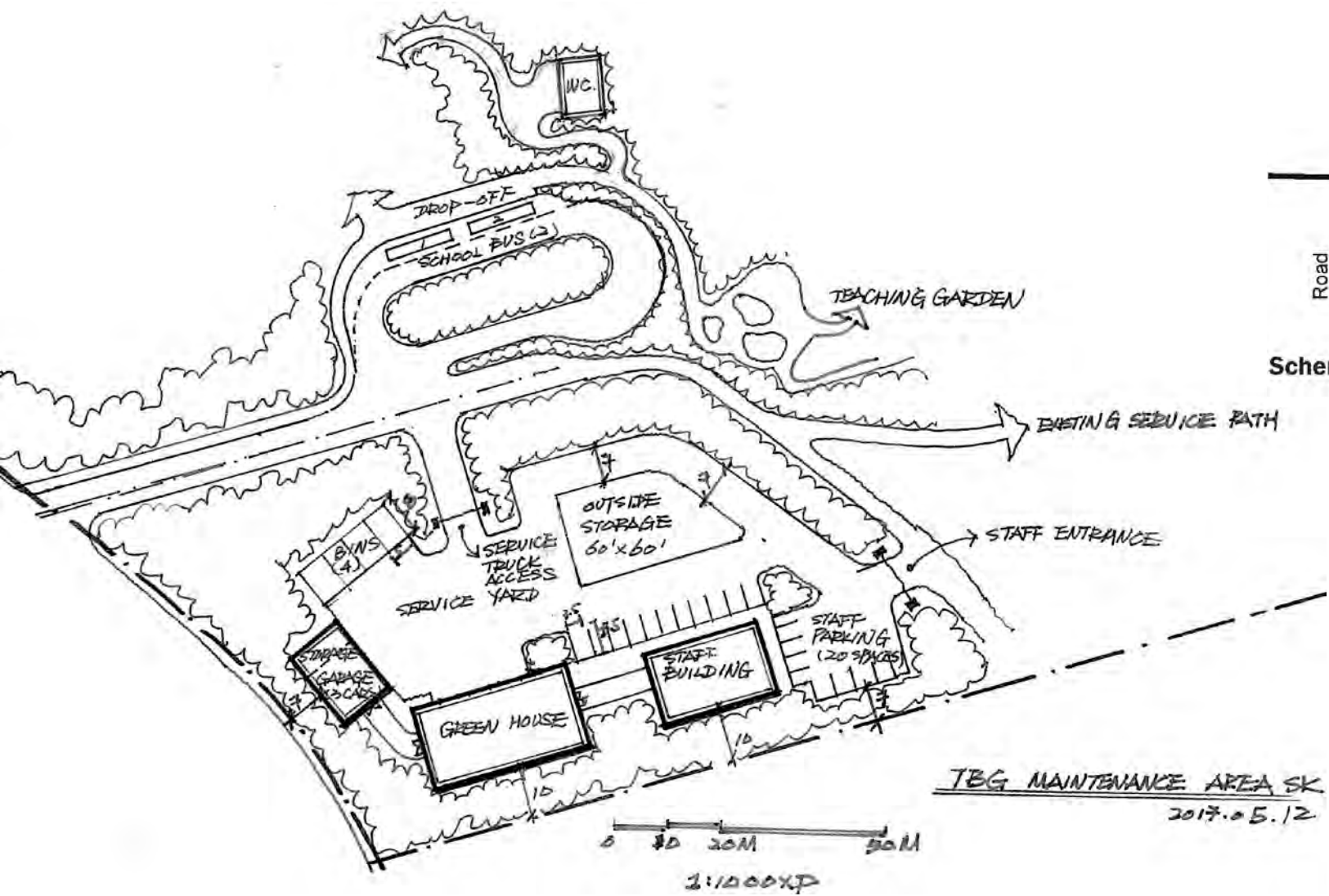


# Facilities – Existing Maintenance and Operations





# Facilities – New Maintenance and Operations



Schematic Section B showing Proposed Berm



# Final Concept Diagram



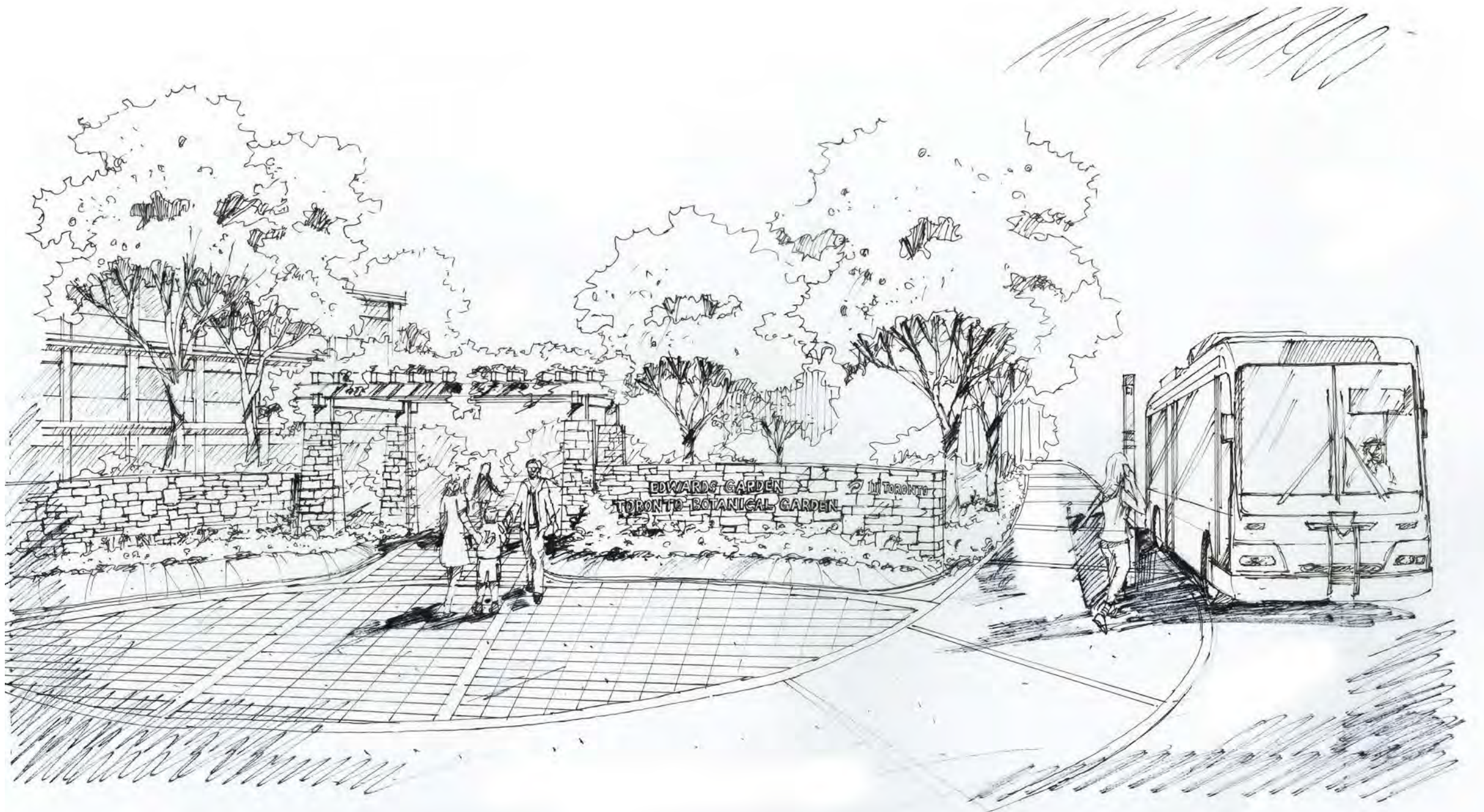


# East Main Gardens and Entrance Plaza



1. Existing gardens
2. Enabling garden
3. Perennial garden
4. Herb garden
5. Xeriscape garden
6. Native plant garden
7. Pollinator garden
8. White garden
9. Scented garden
10. Water garden
11. Perennial garden
12. Entrance Plaza
13. Garden Gateway







# Precedent Image: Main Gardens



Image credit: Chihuly Glass Art in  
Garden by Harry Jongerden

June 07, 2017



# The Greensward



1. The Greensward



# Precedent Image: Greensward



Image credit: TBG by Harry Jongerden

June 07, 2017

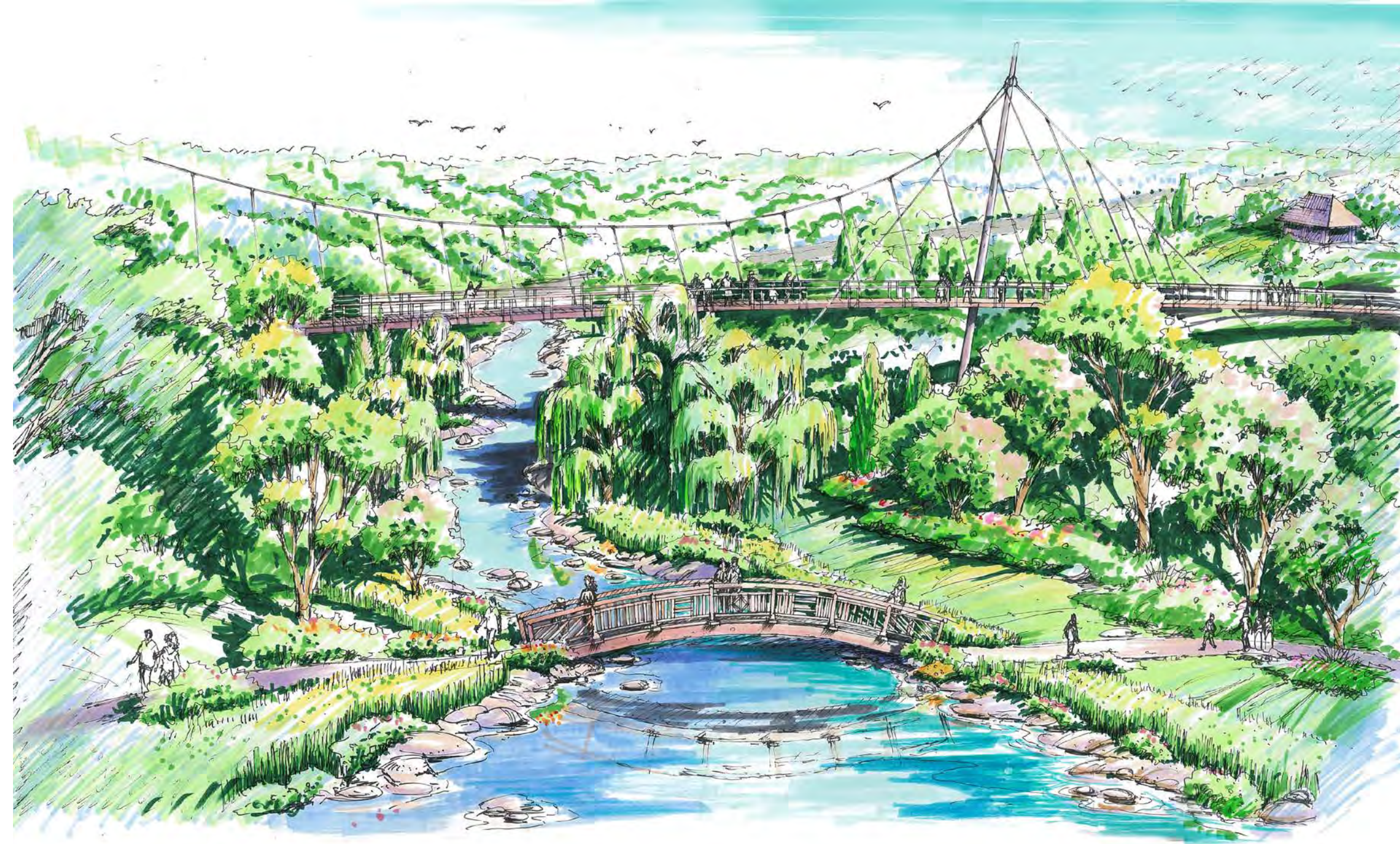


# Circuit Path



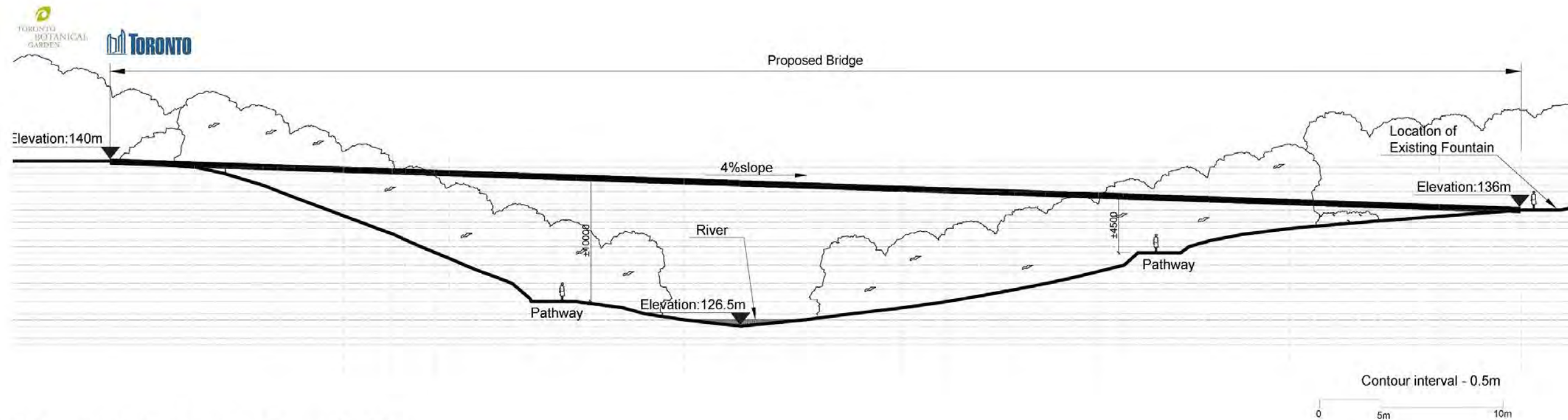
1. Bridge
2. East switchback gardens
3. West switchback gardens







# Bridge: Section Study



Schematic Section A showing Proposed Bridge



# Precedent Image: Bridge



Image credit: Liberty Bridge, photo by DXR, CC Wikimedia

June 07, 2017



# Precedent Image: Elevated Board Walk



Image credit: Salmonier Nature Park, photo by Lei Chang

June 07, 2017



# Celebration Place



1. Celebration Place
2. Shade structure



# Precedent Image: Celebration Place



Image credit: Touch Wood sculpture show in Vancouver  
by Harry Jongerden

June 07, 2017



# West Main Gardens



- 12. Woodland garden  
(including rhododendrons, magnolias, etc.)
- 13. Arboretum



# Precedent Image: Woodland Gardens

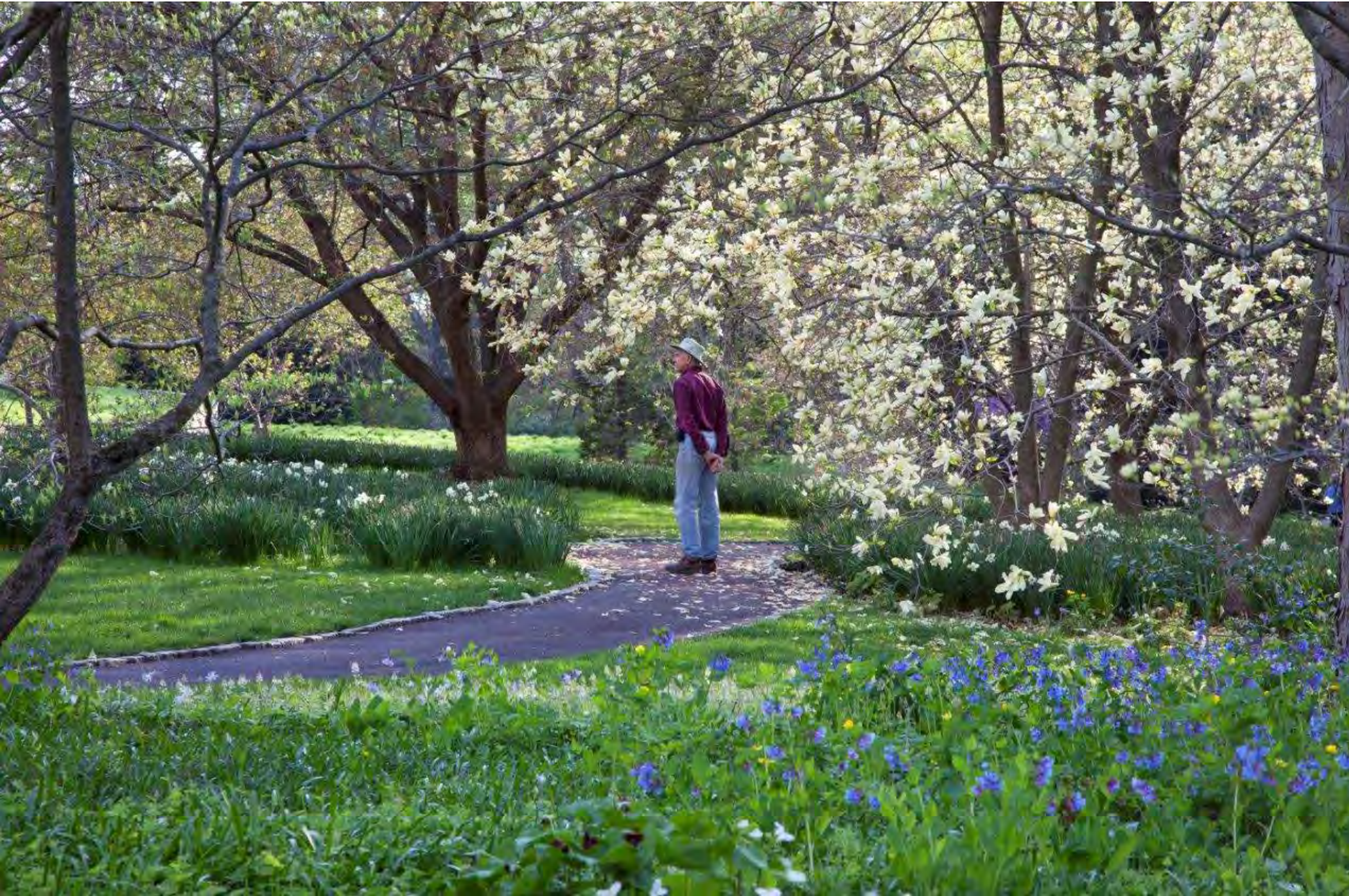


Image credit: Chanticleer Garden,  
photo by Lisa Roper

June 07, 2017



# Teaching Gardens



1. Pergola
2. "Where does my food come from" garden
3. 'Vegetable of World' garden
4. Vegetable garden for display
5. Vegetable garden for teaching
6. Medicinal garden
7. Trial garden
8. Edible garden



# Precedent Image: Teaching Gardens

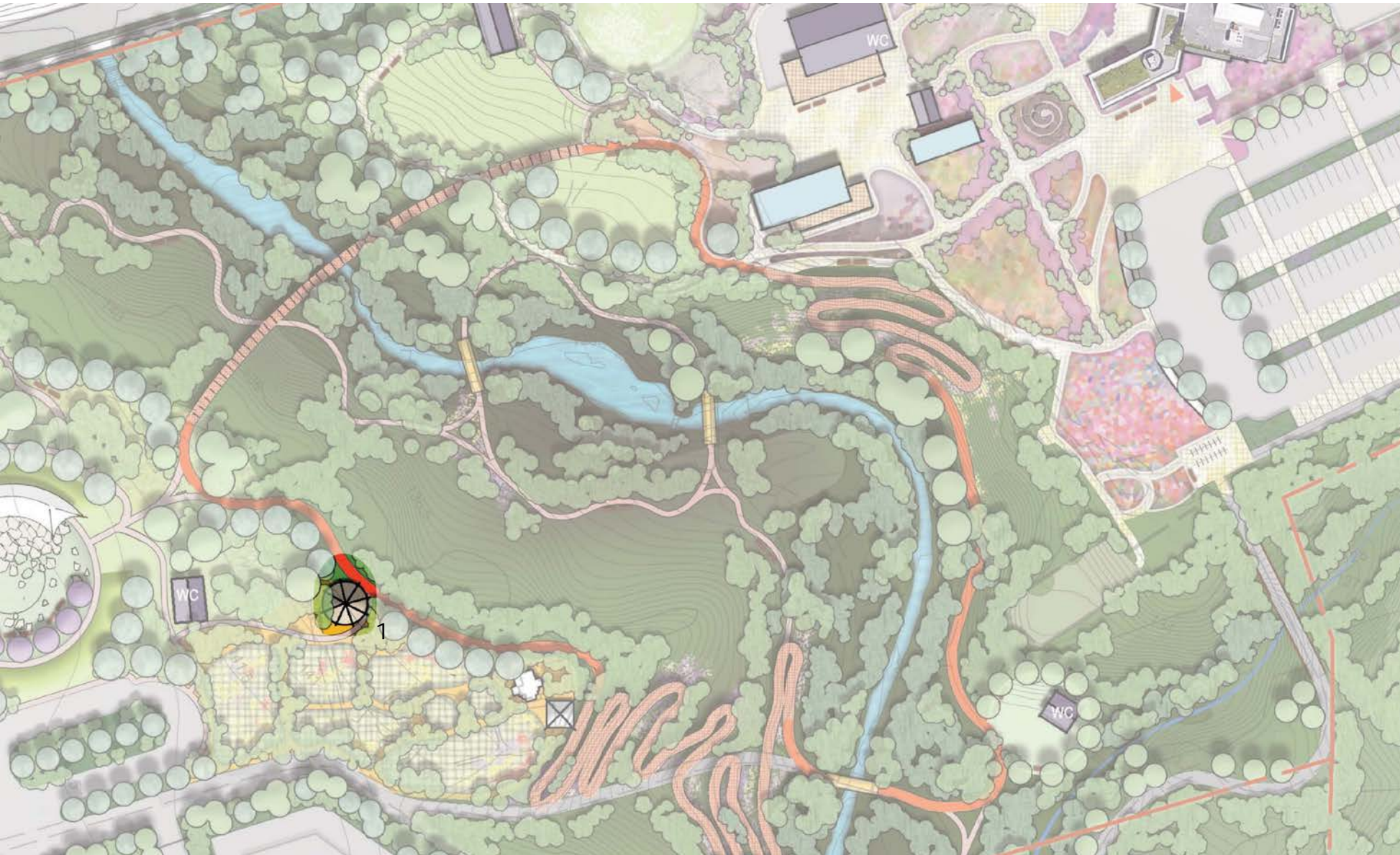


Image credit: Harvest Day by Harry Jongerden

June 07, 2017



# Treehouse



1. Treehouse



# Precedent Image: Treehouse

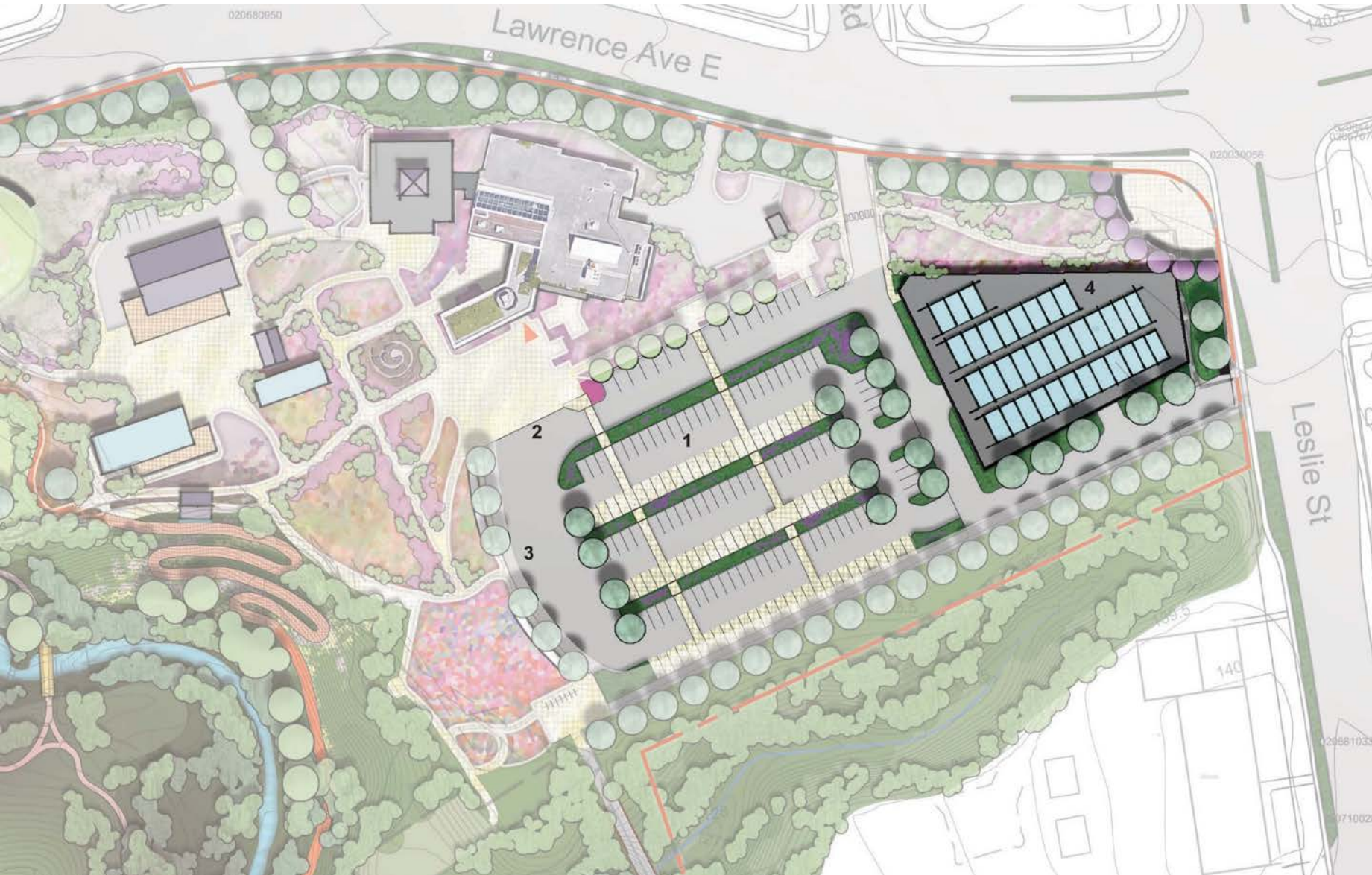


Image credits: Treehouse, photo by Jim, the Photographer, CC Flickr;

June 07, 2017



# Surface parking and parking structure



1. Existing surface parking
2. Drop-off area
3. Bus drop-off area
4. Parking structure



# Precedent Image: Parking Structure with Solar Panels



Image credit: Photovoltaics at the U.S. Embassy in Athens, [https://overseasbuildings.state.gov/green\\_initiatives/energy/renewable](https://overseasbuildings.state.gov/green_initiatives/energy/renewable)





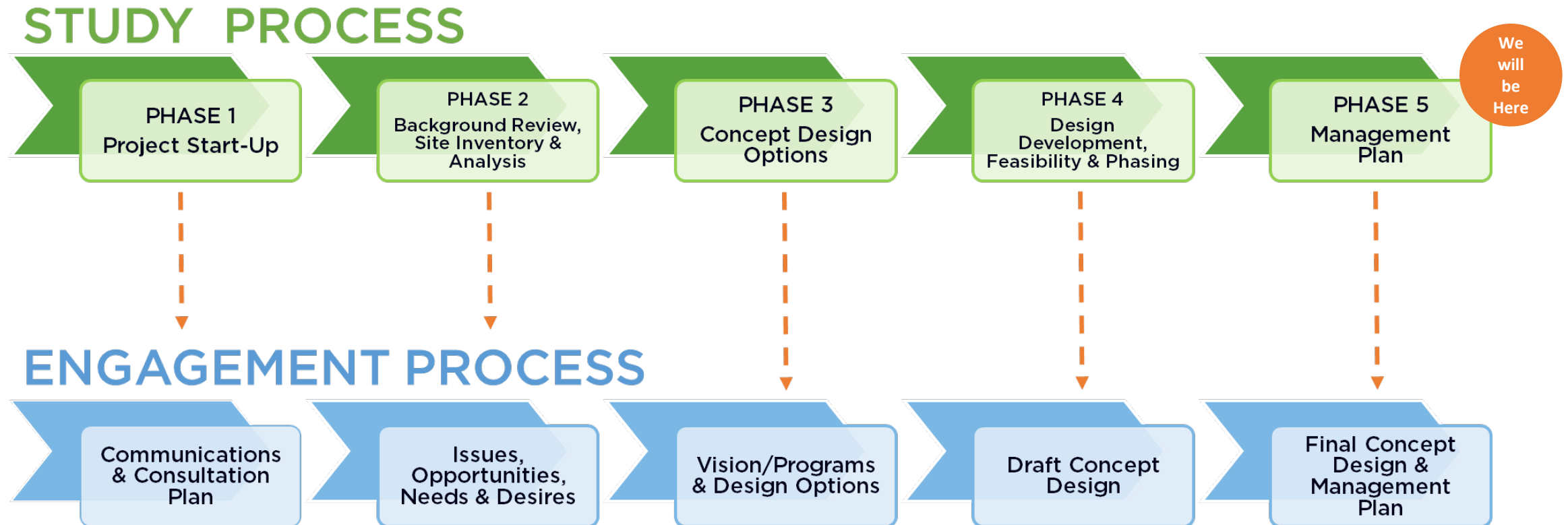
# We Want To Hear From You!

- What do you think are the best aspects of the plan?
- Are there any features you would change that would help to enhance the plan?
- Are there any features you would add that would help to enhance the plan?

*Please feel free to share your feedback during the town hall discussion tonight, or send us your comments by email to [GardensMasterPlan@lord.ca](mailto:GardensMasterPlan@lord.ca) by **Friday June 16<sup>th</sup> 2017**.*



# Study & Engagement Process





# Questions and Next Steps

