

# What We Heard

## Guild Park and Gardens - Trail Master Plan

---

### Public Information Meeting 1

October, 2017

The Planning Partnership





# Public Information Meeting 1

The first Public Information Meeting for the Guild Park and Gardens - Trail Master Plan was held on Monday, October 16, 2017 at the Guild Inn Estate.

Sessions were held at 4:00 pm and 7:00 pm. Each session included a presentation followed by table group discussions, participants added comments directly onto panels with maps of the site.

There were over 70 participants in the workshops including staff with subject matter expertise and the consulting team.

The purpose of the workshop was to gather input on the draft recommendations for trail locations, treatments and the various management areas.

---

**This report coalesces “What We Heard” at the first Public Information Meeting.**



Site Context

# Public Information Meeting Panels

Record your thoughts on:

Trail Location

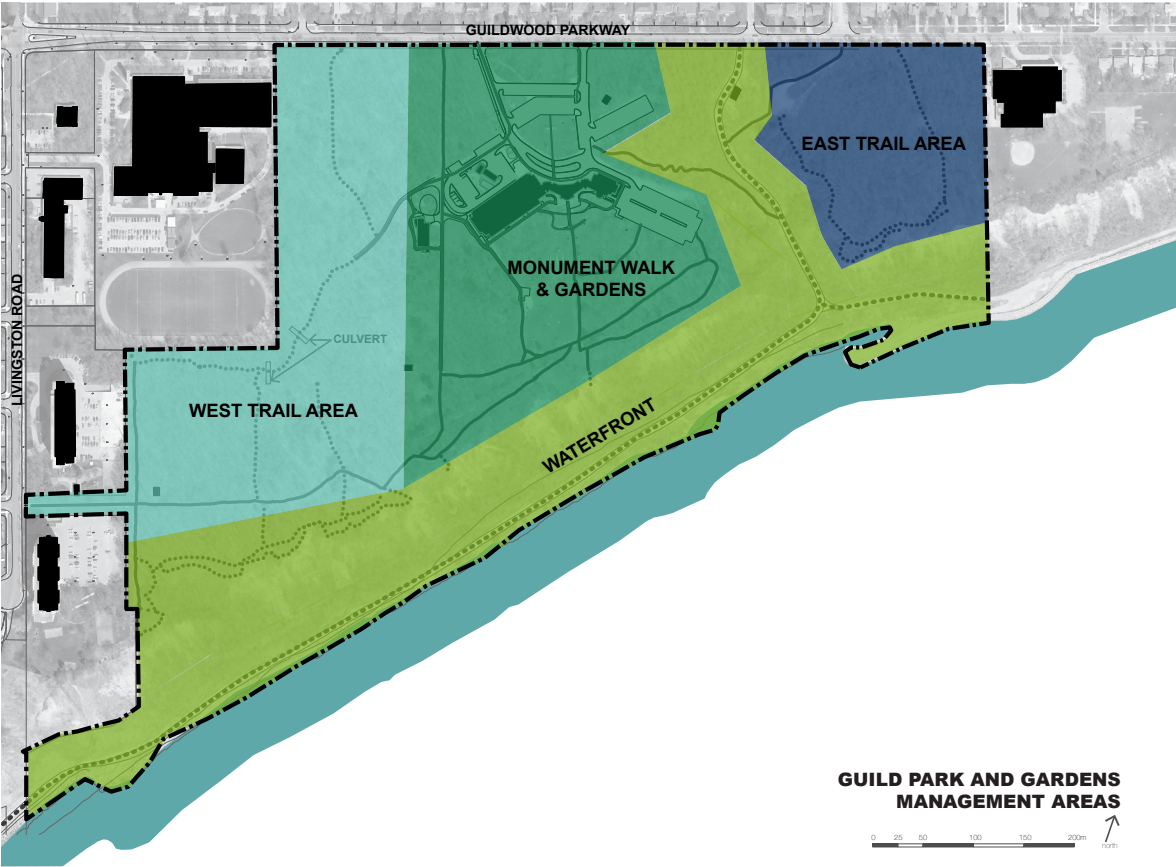
Trail Entrances

Trail Materials

Signage

Existing Conditions

Proposed Changes



Record your thoughts on:

Trail Location

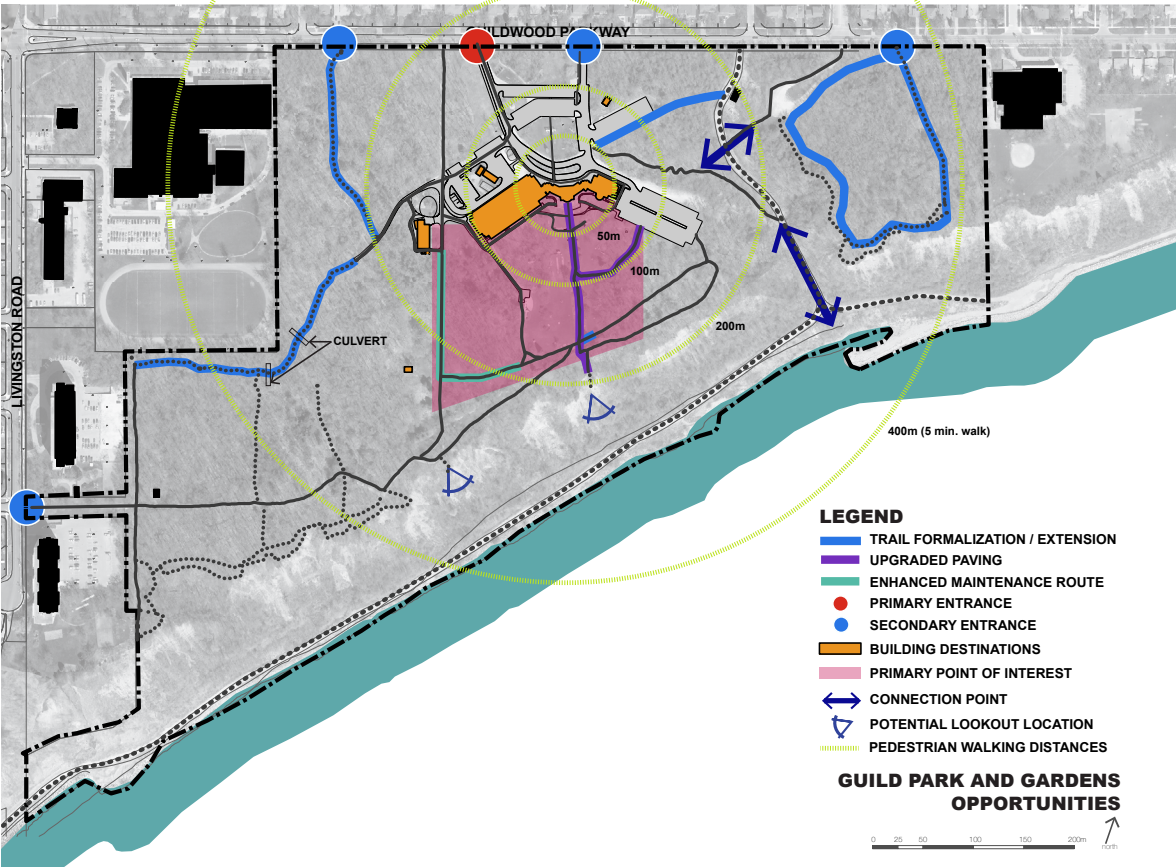
Trail Entrances

Trail Materials

Signage

Existing Conditions

Proposed Changes





## Overview of Site Specific Comments

### West Trail Area

The existing limestone screening path from the Livingston Road entrance should be repaired and made more level with appropriate signage, rest areas, amenities (garbage receptacles, bike racks) and wayfinding.

An additional formalized limestone screening path should be available north of the current trail, coming into the site south of the Chartwell Residence and from the south side of Sir Wilfred Laurier Collegiate Institute.

Paths east-west in this area should remain but the north-south access that dead ends in the hemlock grove and unnecessary parallel paths through the swamp/wet area should be closed for maintaining un-fragmented forest/habitat area.

### Monument Walk and Gardens

The path leading from Guild Inn Estate should have a vista in alignment with this main path. The west north-south access leading to the monument path also has advantages for a vista destination point - drawing people from the already congested node south of Guild Inn Estate.

The path from Guild Inn Estate should be paved with a heritage style paver that is compatible with winter maintenance and with formal events like bridal parties. This area should have better lighting at night, heritage style standards could be chosen.

The secondary path behind the Greek Theatre, used for setting up theatrical productions, should be screened from view and temporarily closed off during performances to avoid distractions for audiences and performers.

### Waterfront

#### **Above the Bluffs:**

Measures should be taken to ensure the safety of trail users, steep slopes and erosion should be addressed with barriers and/or signage. The Waterfront area should have maintained, multi-functional lookout points, south of the Monument Path area and south of the Guild Inn Estate, the view of the lake should line up with the view of the house through the gate. However, the lookout points should not obstruct the view of the lake from the buildings and the park.

#### **Below the Bluffs:**

Safe, formal trails should be extended to areas of interest including the area below the main path on the shore. The waterfront trail should be paved and improved for cycling. There could be a gathering space that could be programed as an outdoor classroom and Native Learning Centre. This area could include fire pits and a butterfly garden.

### East Trail Area

The current access to the road to the waterfront trail is through a steep ravine valley and is hazardous and very difficult to sustain based on active erosion in this area. An alternate access point through this area, that utilizes more sustainable building systems, is desired. An example was provided of the boardwalks and steps secured appropriately with helical piers at Glen Stewart Ravine. Access that is more inclusive and with less of a gradient change (less than 5%) is also proposed south of the north parking lot to provide an alternative for trail users.

The East Trail Area should include wayfinding and signage and could be programmed to better accommodate bird watchers.



## Site Specific Comments

### West Trail Area

#### Trail Location

- Maintain the connecting east-west path. People will cut through if there aren't enough opportunities
- Width of the trail is an issue
- Remove the dead end trail, it attracts unwanted activity

#### Trail Entrance

- Have washrooms, pedestrian amenities, gazebo/ gathering space at entrance off of Livingston Road
- Entrance should have dog waste bins
- Entrance should be designed for local use
- Entrance should be formalized, and have benches
- Entrance should have a rest area
- Have bike racks at entrances

#### Trail Materials

- Secondary entrance off of Livingston Road is an uneven path. Add limestone screening
- Entrance path should be limestone screening

#### Signage

- Poor/no signage especially from Livingston Road
- Add signage, flowers and trees
- Entrance needs a sign to dissuade parking from at the apartments buildings

#### Existing Conditions

- This area is full of trilliums
- There is lots of garbage in the West Trail Area
- Used frequently by seniors

#### Changes - Proposed New North Livingston Entrance

- Add a formal entrance behind the high school
- Add new trail entrance from Livingston Road
- New entrance that is AODA accessible
- Need an entrance near Chartwell Residence
- Entrance off of Livingston Road should have limestone screening and a rest area
- Have service and bike access

#### Other

- Who owns the area between the retirement building and the high school?
- Minimize disruption to wildlife
- Discourage bikes traveling through the entrance off of Livingston Road and the West Trail Area
- Issues with trail users parking at the apartments

### Monument Walk and Gardens

#### Trail Location

- Block off the path behind the Greek Theatre to avoid distractions during performances

#### Trail Entrance

- Main entrance should have a school bus drop off

#### Trail Materials

- Path should be lined with wood chips
- 'Upgraded Paving Area' on the map should be unit paving
- Heritage pavers for the path from the Guild Inn, south to the waterfront
- Have permeable paving for main axis from terrace
- Upgraded paving should be interlocking brick or white concrete (consider winter safety)
- Pave the formal path
- Will paths be cleared in the winter?
- Accessibility and winter maintenance/safety concerns

#### Existing Conditions

- Parking at Guild Inn is usually full on weekends
- Access to the Greek Theatre is an issue
- Clark Centre is an attraction

#### Proposed Changes

- Area by the Greek Theatre needs more shade
- Promote the bistro, and expand the bar
- Need more lighting, public washrooms and an arts program
- Need more lighting in this area
- Have a Christmas tree in front of the Guild Inn
- Small building between the parking lot and the road could be a community program space
- Have an ice skating rink beside the Clark Centre
- Have a small patio area for art students at the Clark Centre
- Trees removed from the Clark Centre area to be milled and cut into boards and re-purposed for use in the park, buildings, art, site furnishings etc. Recycle and re-use!
- No dogs or bikes should be allowed in the gardens

#### Lookout Points

- Look-out point south of Guild Inn is the best spot
- Prefer the western lookout location

## Waterfront

### Trail Location

- Have future trail extension to peninsula to reduce the slope
- Barrier where the trail goes into private property (to prevent hikers from walking on cliff edge)
- Shortcut to the water from western trail is a safety issue

### Trail Materials

- Trail along the waterfront should be a paved multi-use trail
- Waterfront trail should be asphalt
- Improve bike trail along the waterfront for cyclists
- Waterfront trail should be shared for both pedestrians and cyclists

### Signage

- Sign is needed at fork in trail, should show how much longer the trail goes on in each direction, and have a caution message for cyclists stating 'steep hill ends suddenly'
- Signage is needed at the fork in the trail showing where the trail goes

### Existing Conditions

- Remove the rebar, need a safe waterfront
- Bats and mosquitos south of the large parking lot
- There is a garbage issue
- Concerns over limited parking in the summer
- Path along the water is the best walk in the city

### Proposed Changes

- Should have designated fire pits
- Have a gathering space or outdoor classroom
- More benches and garbage receptacles
- Have a butterfly garden, plant more trees
- Native Learning Centre

### Lookout Points

- View of the lake should line up with the view of the house (through the gate)
- The two lookouts could have other functions
- Paths south of the West Trail Area are a good lookout, but are not maintained
- Lookout south of the Inn should be the priority
- Look out should not be in front of the buildings because of view from park, but the western option looks like a good idea

## East Trail Area

### Trail Location

- Formalized trail extension is a good idea
- Have connections for cyclists
- Trail connecting to the area is an important access point
- Keep the loop trail, don't expand it, this is a good area for bird watchers
- Keep the loop natural for bird watchers

### Trail Entrance

- Could have another entrance between the two north entrances
- North-eastern trail access used to allow vehicle access
- The north-eastern entrance and trail should include cyclist access

### Trail Materials

- Trails should have a natural surface (wood chips)

### Signage

- Need a sign warning people about the steep incline
- Need signage/wayfinding for access and conditions
- Path beside Guild Inn Estate badly needs a sign

### Existing Conditions

- There are trilliums here
- Connection point to the East Trail Area is washed out
- Trail east of the parking area is hazardous
- Connection to East Trail Area from main trail is not safe
- Steep incline is dangerous
- Trail between the large parking lot and East Trail Area is washed out
- Eroded trail between the parking lots should be replaced with helical pier core ten steel steps to prevent further erosion (similar to Glen Stewart Ravine) and provide a stable footing. Accessible path proposed north as an alternate connection
- East area is very isolated (riff raff may gather)

### Proposed Changes

- There could be an off leash dog park (eastern portion)
- Have an ice skating loop
- Area should have four season use
- Have bird feeding stations



## **General Comments**

### **Trail Location**

- Improve east-west connections

### **Trail Entrance**

- Trail entrances need bike racks
- Garbage bins
- All primary and secondary entrances should have a sign and a map (include distances on site maps)
- Uniform entrances

### **Trail Materials**

- Wood chips
- Unit paving in gardens
- Limestone screening instead of asphalt
- Side trails are swampy and/or muddy ¾ of the year
- Leave paths with natural surfaces like pea gravel
- Boardwalk trails are slippery surfaces
- Trails and paths should be natural, not too much paving
- Review the main trail materials, support paving (for those in formal clothing)
- Natural material would be best (as is currently used on the trail off of Livingston Road)

### **Signage**

- Interpretive posts showing points of horticultural significance
- Interpretive signage for the monuments and natural features
- Signage to slow traffic
- Discrete, natural signage
- Trail signs with rules (using leashes)
- Clarity on where dogs are allowed (leash reminder)
- Need signs for trail etiquette (bird watching)
- Have signage for trail etiquette
- Signage to enforce dogs on leash, no BBQs, no climbing on the monuments
- Trails should be marked accessible or not
- Signage for trails for/not for cycling
- Signage indicating where to park your car

### **Existing Conditions**

- Limestone screening is washed out
- Overhanging branches on nature trails should be pruned

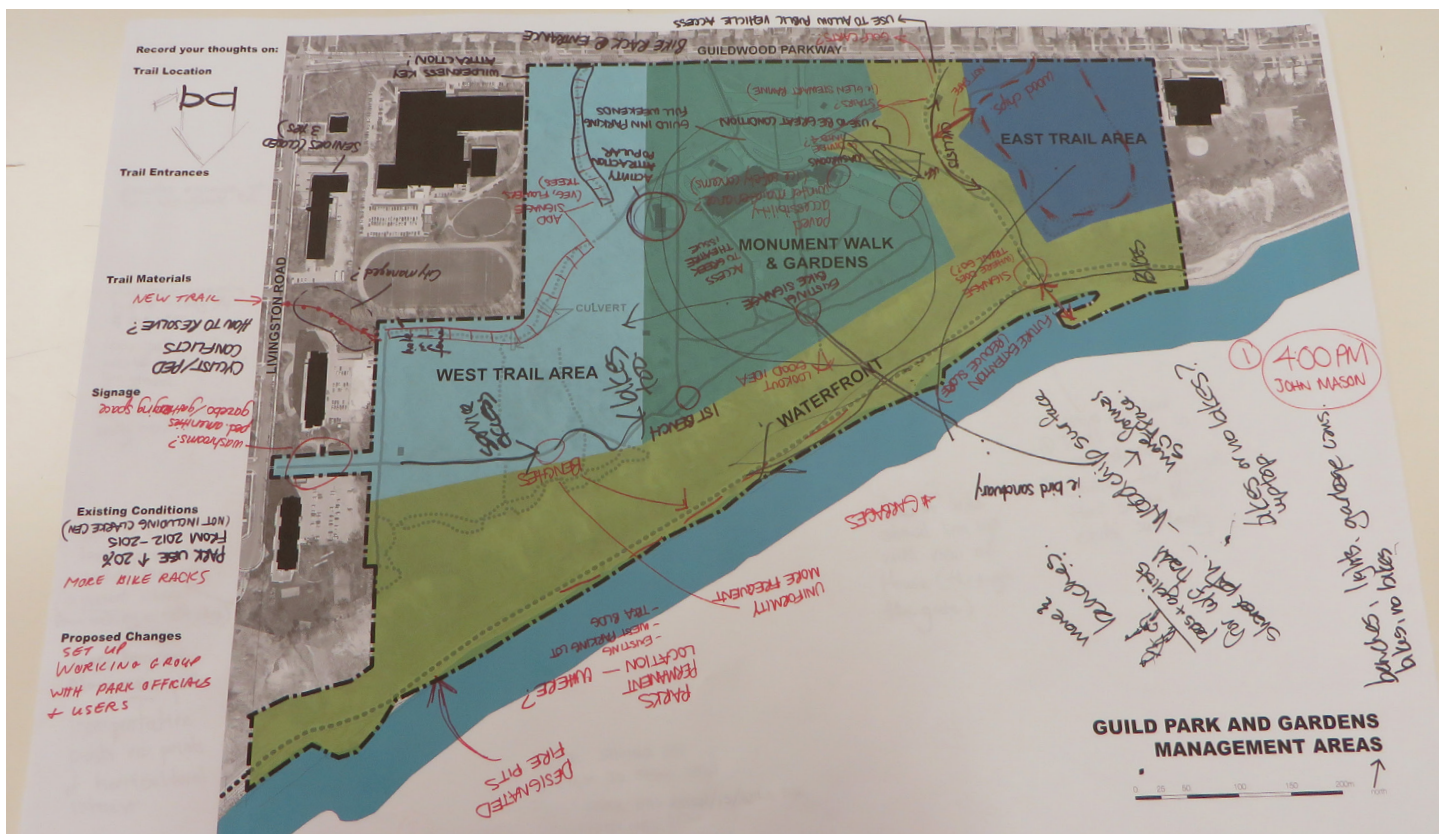
### **Proposed Changes**

- More benches along the main paths
- Dedicated, memorial benches
- Need more bike racks
- Park use is up 20% from 2012-2015
- More benches, lights, garbage cans
- More lighting
- A bicycle trail on site or along parkway for pleasure riders
- Please support bikes of all kinds
- Build bridges
- Have a medicine garden on the site
- Possible off leash area for dogs
- Cycling strategy for access road to waterfront (possible cycling lanes)
- Winter maintenance consideration for all paths
- Need a place to store maintenance equipment
- Recognize our natural environment and enhance habitats (plants, pollinators, birds, migratory areas)
- Natural areas should have a natural aesthetic
- More art on the grounds
- Will picnicking be allowed?
- Access between parks for animal migration should be considered

### **Other**

- Set up a working group with park officials and users
- Have an ongoing working group with multiple stakeholders
- There should be a film to show how this park has been/is/will be transformed
- Consider issues related to increased use. Manage the impact

## Panels With Public Comments





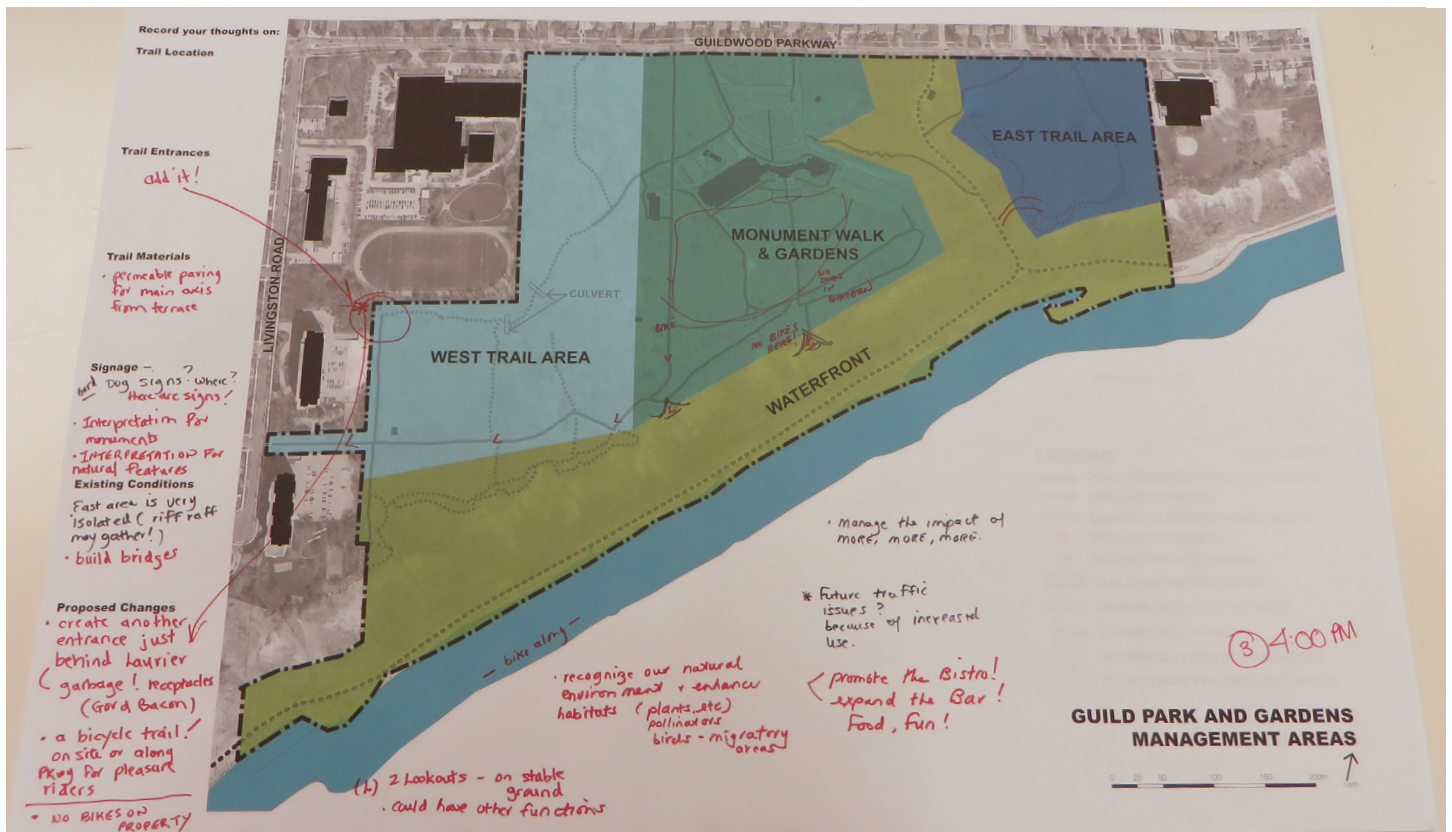




# Panels With Public Comments









## Panels With Public Comments







