

DESIGN PROCESS - SITE EVALUATION

HUMBER BAY PARK PROJECT - BUILDING CONCEPT

4A



MAINTAIN EXISTING BUILDING



NEW BUILDING AT EXISTING POSITION



NEW BUILDING ON NEARBY SITE

	A1	A2	A3
Sensitivity to natural environment	○	▪	●
Landscape integration building foot print reduction opportunities	▪	●	●
Proximity to existing servicing infrastructure	●	●	○
Works with pond restoration plan (raised pond level, etc.)*	▪	●	●
Enables phasing and implementation of adjoining park maste plan improvements	▪	▪	●
Proximity to recreation pond and picnic areas	▪	▪	●
Supports active outdoor activities/programs	▪	○	●
Supports indoor programming	○	●	●
Views to recreation pond from building	▪	▪	●
Views to wetland/habitat areas from building	▪	●	●
Provides durable long term accommodation	▪	●	●
* Master Plan Initiative	▪ Poor	○ Average	● Good

SITE EVALUATION MATRIX

A3 SITE OUTCOMES & RECOMMENDATIONS:

- CREATE ACCESSIBLE NEW FACILITY THAT RESPONDS TO OPPORTUNITIES OF PARK MASTER PLAN
- SITUATE BUILDING ADJACENT TO RECREATIONAL POND (I.E. SKATING, MODEL SAILBOATS, ETC) AND AWAY FROM IMPROVED HABITAT WETLAND AREA
- PROVIDE LOOKOUT PLATFORMS & VIEWS TO NEW WETLAND, POND ACTIVITIES AND LAKE BEYOND
- INTEGRATE BUILDING AND LANDSCAPE TO REDUCE BUILDING FOOTPRINT AND ENHANCE PARK AMENITY
- CREATE A CONNECTION TO NATURE: WHERE THE BUILT AND NATURAL FORM ARE SHAPED FLUIDLY AMONGST AND THROUGH EACH OTHER, CREATING MEMORABLE SPACES AND EXPERIENCES

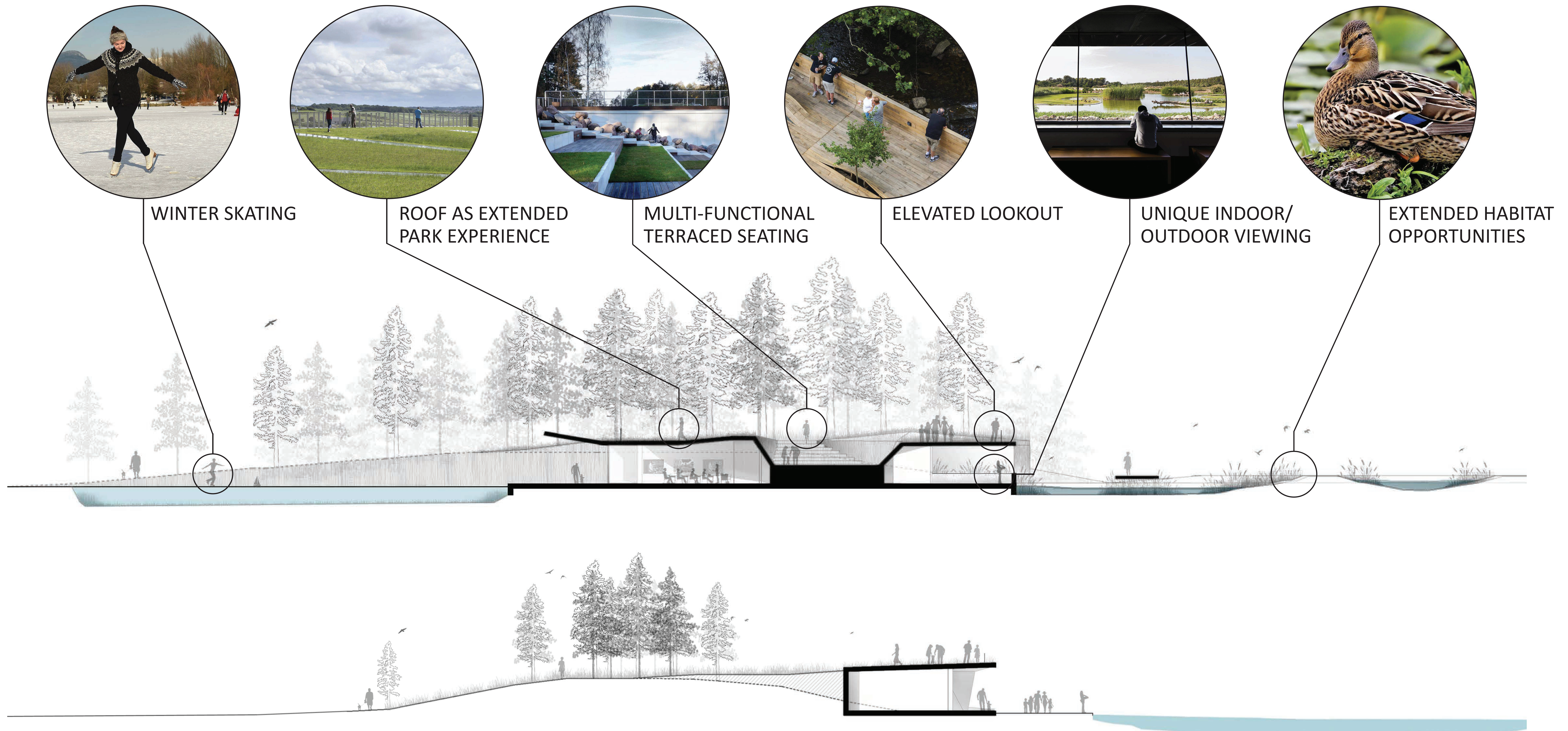
INTEGRATING BUILDING & LANDSCAPE | 4B

HUMBER BAY PARK PROJECT - BUILDING CONCEPT



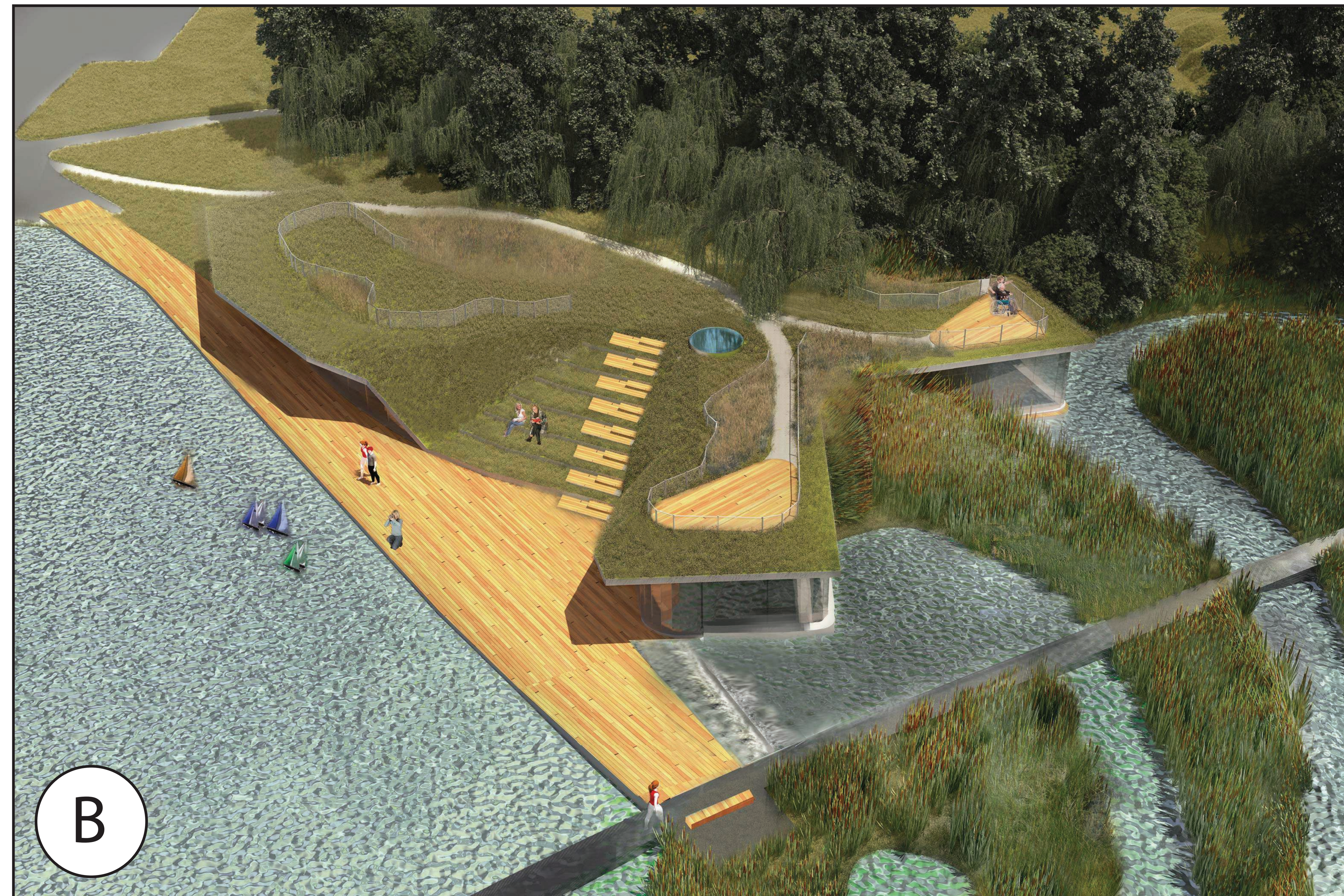
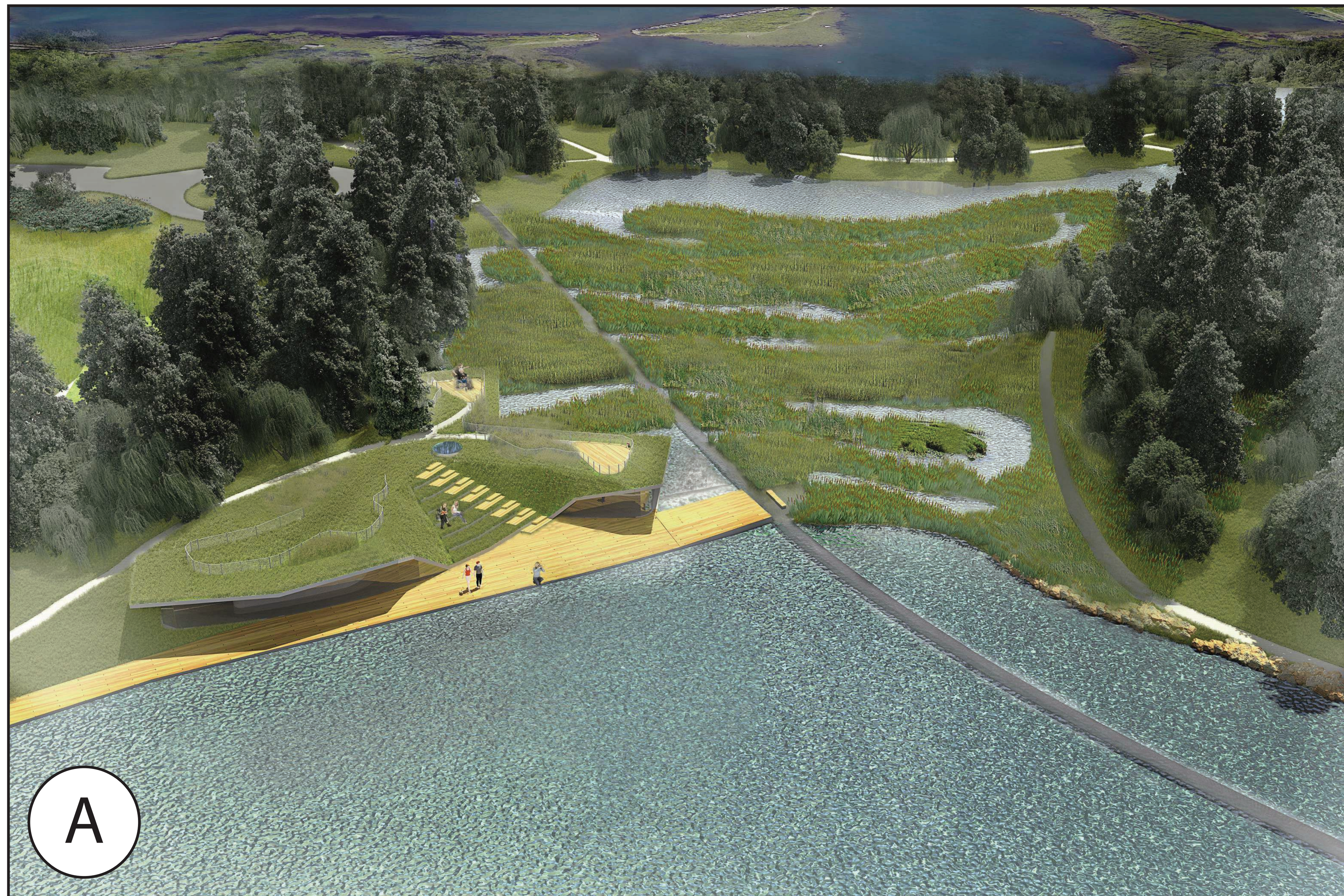
EXPANDING PARK USER & HABITAT OPPORTUNITIES | 4C

HUMBER BAY PARK PROJECT - BUILDING CONCEPT



SECTION B - INTEGRATING LANDSCAPE & BUILT FORM

HUMBER BAY PARK PROJECT - BUILDING CONCEPT



A. AERIAL VIEW FROM WEST OF BUILDING AND RELATED LANDSCAPE IMPROVEMENTS

B. AERIAL VIEW FROM EAST OF BUILDING AND RELATED LANDSCAPE IMPROVEMENTS

C. VIEW FROM NORTH ACROSS RECREATION POND TOWARDS NEW BUILDING

ARTIST RENDERING OF POND & MEADOW | 4E

HUMBER BAY PARK PROJECT - BUILDING CONCEPT



A. ARTIST RENDERING BY DTAH SHOWING VIEW OF MULTI-SEASONAL POND AND WETLAND

B. ARTIST RENDERING BY DTAH SHOWING VIEW ACROSS PARKING AND MEADOW