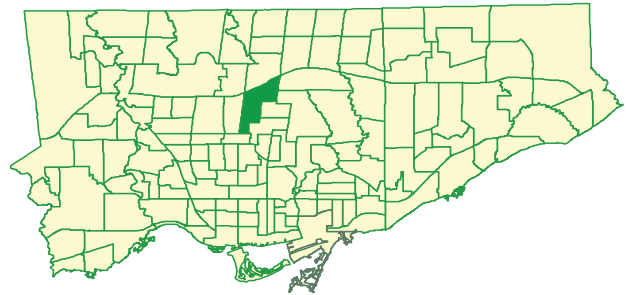
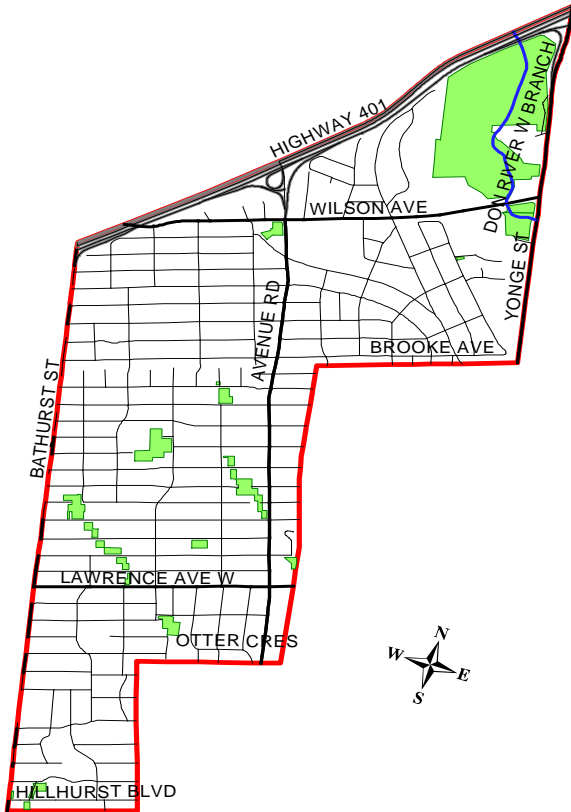


# 39. Bedford Park-Nortown



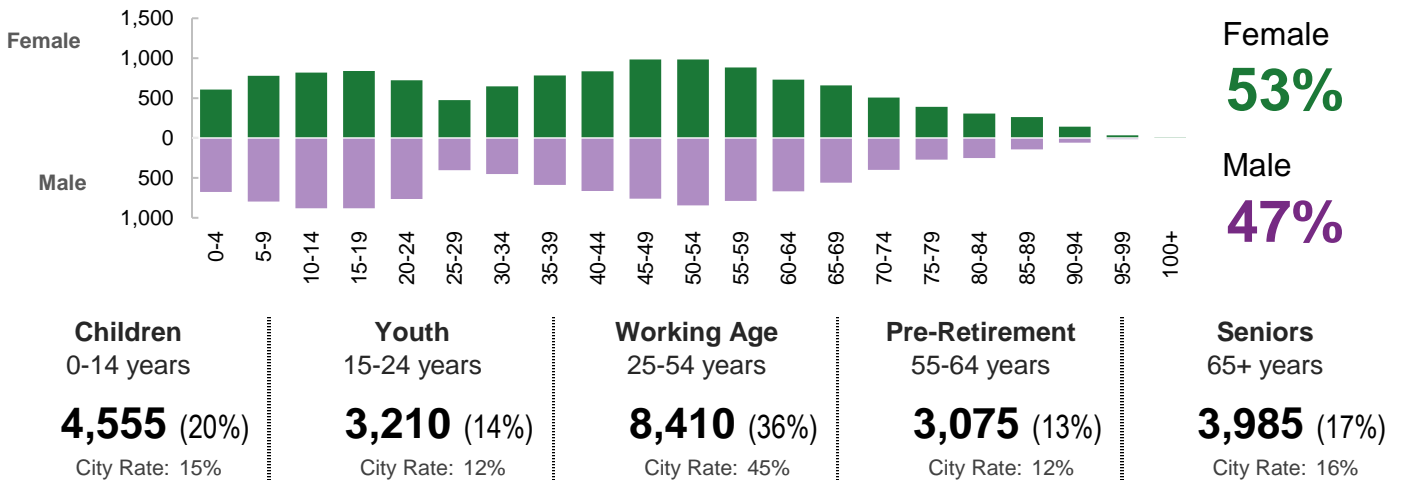
### Neighbourhood Snapshot

**Population 23,236**

Population Change  
2011-2016 **+0.2%**

Population Density **4,209**  
people per square km

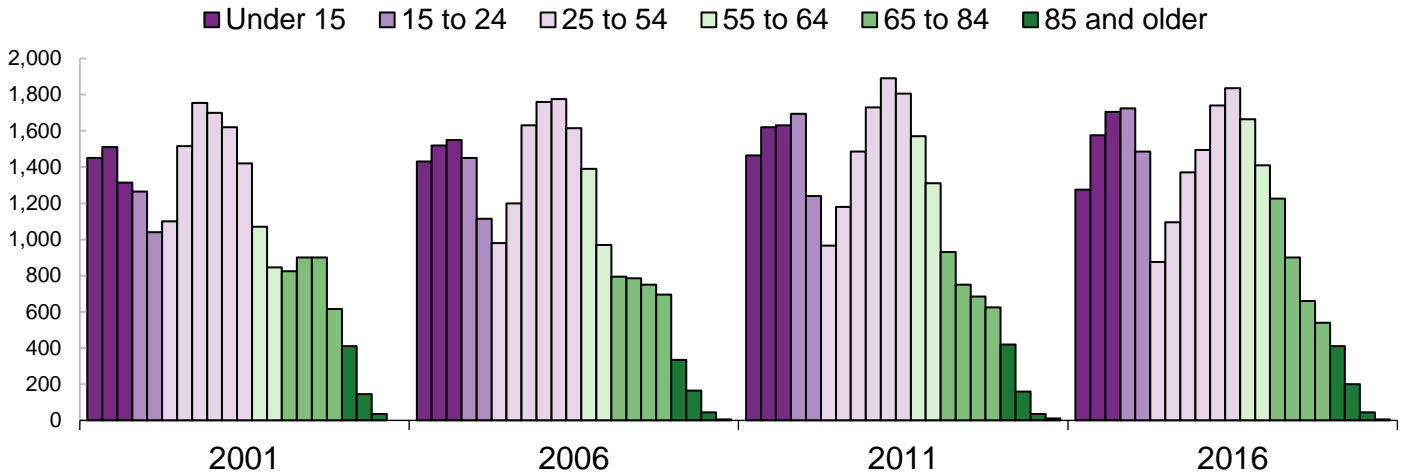
### Population



# 39. Bedford Park-Nortown

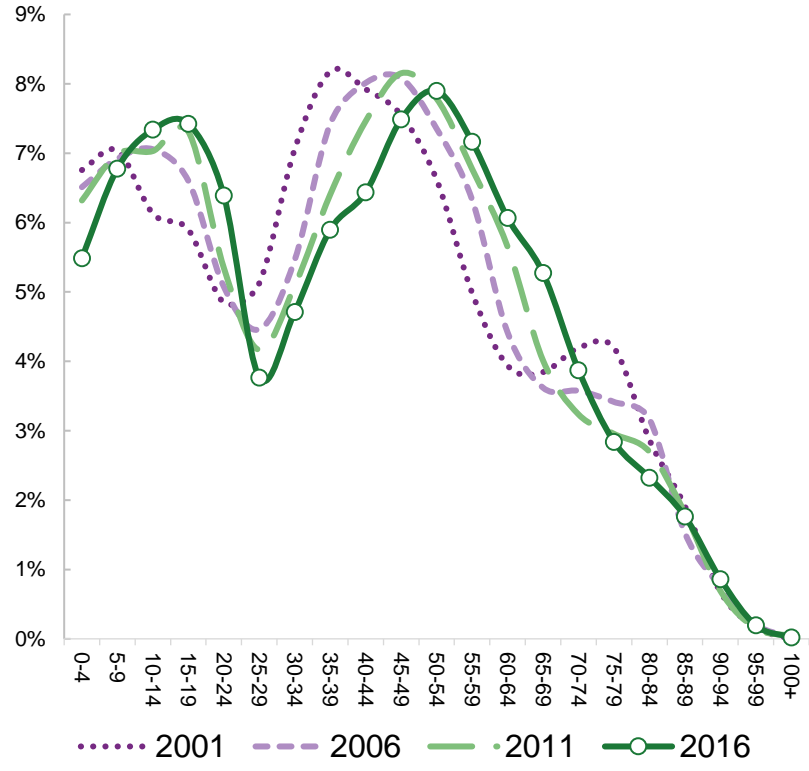
**Population Change 2001-2016**

**Population by age groups, 2001-2016**



Age	2001	2006	2011	2016	Trend
0-4	1,450	1,430	1,465	1,275	↘
5-9	1,510	1,520	1,620	1,575	↘
10-14	1,315	1,550	1,630	1,705	↗
15-19	1,265	1,450	1,695	1,725	↗
20-24	1,040	1,115	1,240	1,485	↗
25-29	1,100	980	965	875	↘
30-34	1,515	1,200	1,180	1,095	↘
35-39	1,755	1,630	1,485	1,370	↘
40-44	1,700	1,760	1,730	1,495	↘
45-49	1,620	1,775	1,890	1,740	↘
50-54	1,420	1,615	1,805	1,835	↗
55-59	1,070	1,390	1,570	1,665	↗
60-64	845	970	1,310	1,410	↗
65-69	825	795	930	1,225	↗
70-74	900	785	750	900	↗
75-79	900	750	685	660	↘
80-84	615	695	625	540	↘
85-89	410	335	420	410	↘
90-94	145	165	160	200	↗
95-99	35	45	35	45	↗
100+	0	5	10	5	↗

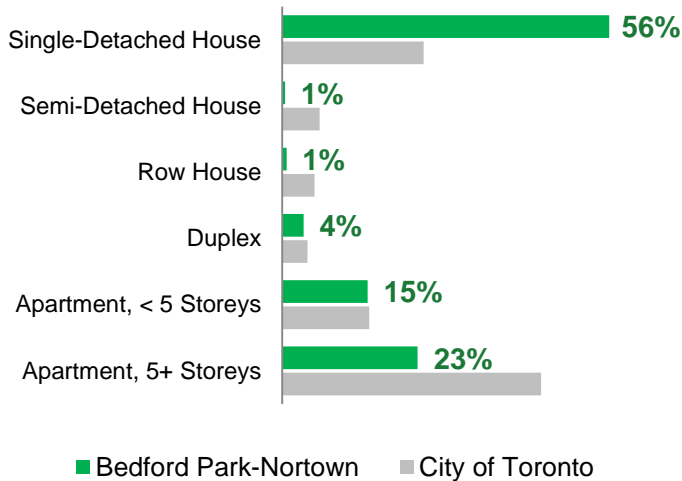
**Per cent of total population by age groups, 2001-2016**



# 39. Bedford Park-Nortown

## Private Dwellings by Structure Type

Total Number of Private Dwellings **9,052**



## Living Arrangements

Single, young adults (age 20-34) living with parents	<b>1,900</b>	<b>55%</b> of adults age 20 to 34 City: 34%
Adults (age 15-64) living alone	<b>1,170</b>	<b>13%</b> of all population age 15 and older City: 16%
Seniors (age 65-84) living alone	<b>930</b>	<b>28%</b> of adults age 65 to 84 City: 25%
Seniors (age 85+) living alone	<b>290</b>	<b>49%</b> of adults age 85+ City: 39%

## Marital Status

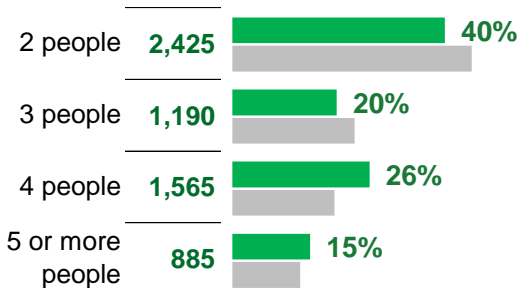
### Married or living common law

Married	Common Law
<b>10,130</b> people <b>(54%)</b> City: 43%	<b>765</b> people <b>(4%)</b> City: 7%

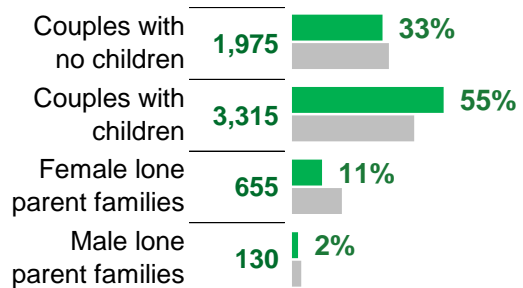
### Not married and not living common law

Never Married	Separated	Divorced	Widowed
<b>5,420</b> people <b>(29%)</b> City: 35%	<b>380</b> people <b>(2%)</b> City: 3%	<b>1,050</b> people <b>(6%)</b> City: 7%	<b>925</b> people <b>(5%)</b> City: 5%

## Number of Census Families by Size of Family

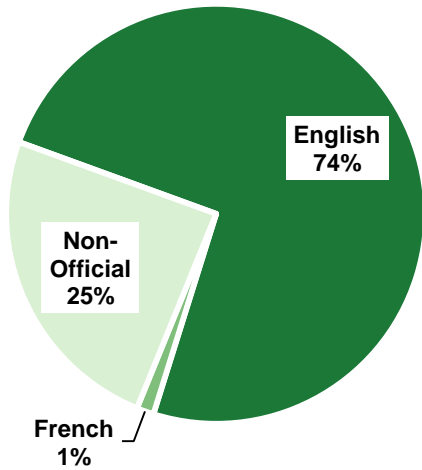


## Number of Census Families by Family Type



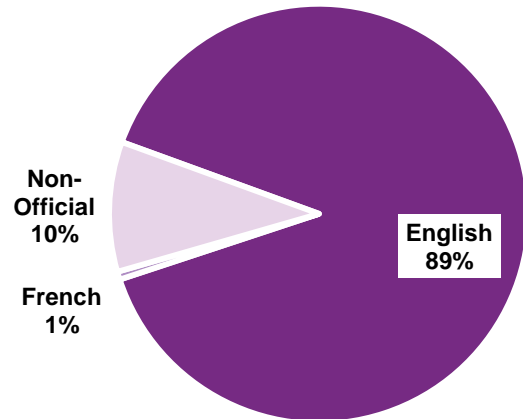
# 39. Bedford Park-Nortown

## Mother Tongue (Single-Response)



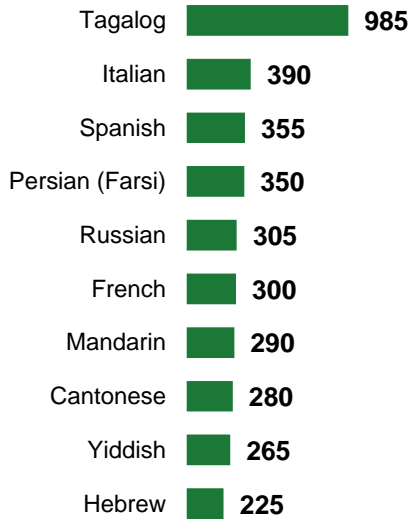
City rate for non-official mother tongue: **46%**

## Home Language (Single-Response)

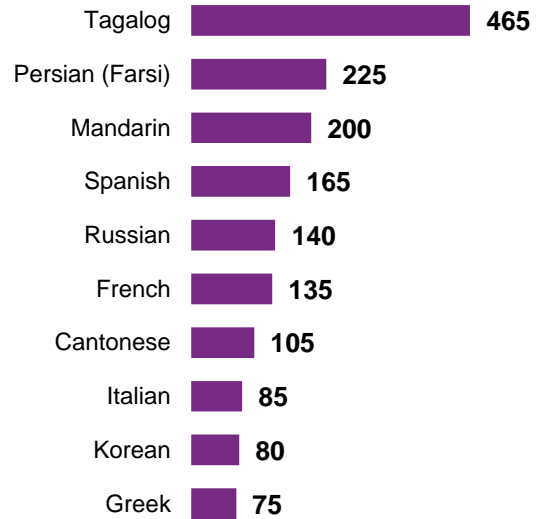


City rate for non-official home language: **29%**

## Top-10 Non-English Mother Tongue Languages

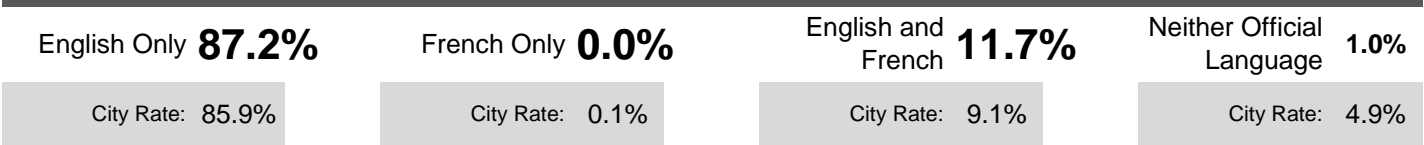


## Top-10 Non-English Home Languages



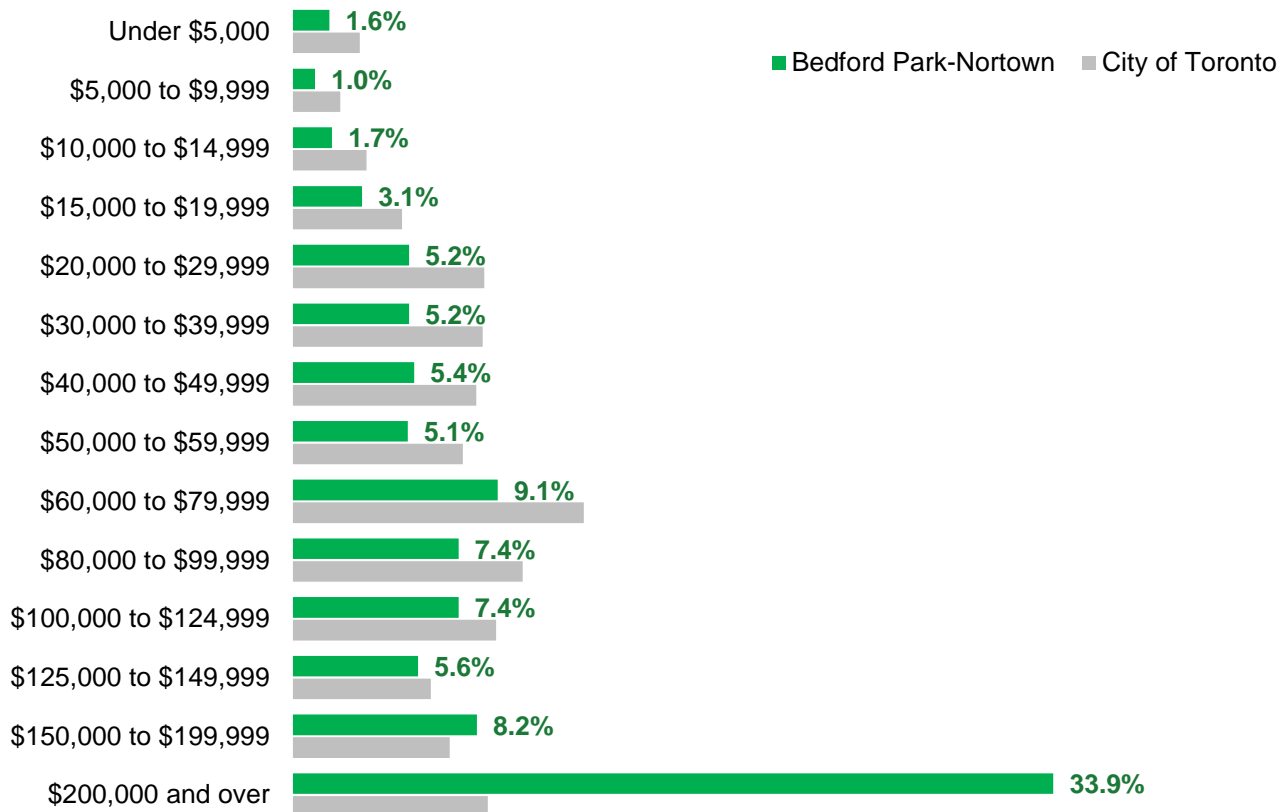
Note: "n.i.e." = not included elsewhere; "n.o.s." = not otherwise specified

## Knowledge of Official Languages



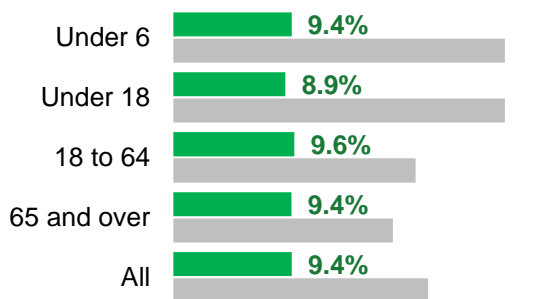
## 39. Bedford Park-Nortown

### Total Household Income (per cent of households by income groups)



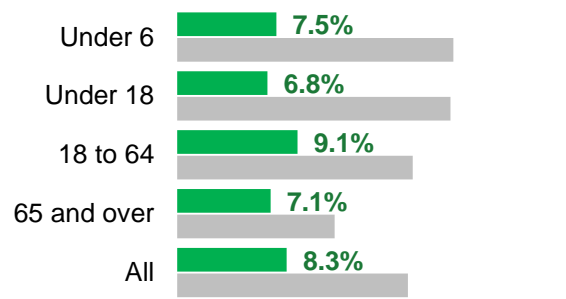
### Rates of Low Income (by age groups)

#### Low Income Measure (After Tax)



■ Bedford Park-Nortown ■ City of Toronto

#### Low Income Cut-Off (After Tax)



■ Bedford Park-Nortown ■ City of Toronto

Annual after-tax income thresholds for LIM-AT  
1 person: **\$22,133** 4 persons: **\$44,266**

Annual after-tax income thresholds for LICO-AT  
1 person: **\$20,386** 4 persons: **\$38,544**

**Please note: This is a preliminary neighbourhood profile, based on available Census data as of the September 13, 2017 data release. Additional Census data will be added to the final Neighbourhood Census Profiles, which will be available following the release of all Census data.**

When all Census data has been released, the full data set will be posted for download from the City of Toronto's Open Data portal. In the meantime, an electronic file of available neighbourhood-level Census data is available upon request to [spar@toronto.ca](mailto:spar@toronto.ca). All data in this profile is made available under the Open Government Licence – Toronto, available at [www.toronto.ca/open](http://www.toronto.ca/open). Use of this data indicates acceptance of the terms and conditions of this licence.

### Definitions

For information about the terms and concepts highlighted in this profile, visit the Census reference materials page of Statistics Canada's website: <http://www12.statcan.gc.ca/census-recensement/2016/ref/index-eng.cfm>

### Population by Age

Neighbourhood population for the last 4 Censuses is presented by 5 year age groups. The top chart shows the total population distribution for each Census year, to show the overall change in population of the neighbourhood over the last 15 years. The table displays the figures for each age group by Census and includes a trend line showing the change within in each age group over that time. The highest level of population is marked with the purple dot on each trend line. The graph bottom left shows the population for each age group as a percentage of the total population in the neighbourhood for that Census year. Each Census year is represented by a separate line, to show the change over time in the relative size of each age group.

### Dwellings Households and Families

This page provides neighbourhood information on the number and type of dwellings, the marital status of all people over age 15, and the size and type of Census families in the neighbourhood. City of Toronto comparisons reflect the relative proportions of each of the categories as compared to the neighbourhood. This page also provides counts of several specific living arrangements: single, young adults living with their parents, and people who live alone.

### Language

The two sets of charts represent two different language concepts. Mother Tongue refers to the first language spoken and still understood by an individual, while Home Language refers to the main language the individual uses at home. Data is also presented about the ability of neighbourhood residents to carry on a conversation in English and French.

### Income

Total household income refers to the total amount of income for a household in 2015 that is of a regular and recurring nature, such as investment and pension income, employment income, and income from government sources. The chart displays the proportion of households falling within each income group.

This also page provides information about two measures of low income. The Low Income Measure (After Tax) is a measure that reflects households living with income below half of the Canadian after tax household income median. The LIM threshold varies with the size of the household. The Low Income Cut Off is a different measure that reflects the ability of economic families (or persons not in economic families) to afford necessities of food, shelter and clothing. The LICO threshold varies with the size of the economic family unit, but also with the size of the population centre.

### Your feedback is welcome

This is a preliminary neighbourhood profile. City of Toronto staff will prepare updated neighbourhood profiles once all the 2016 Census data has been released. Your feedback to help us continue to improve these profiles is welcome. Please email us with your comments at [spar@toronto.ca](mailto:spar@toronto.ca).