

Authority: Toronto East York Community Council Report No. 1, Clause No. 27,
adopted as amended, by City of Toronto Council on February 4, 5 and 6, 2003
Enacted by Council: February 7, 2003

CITY OF TORONTO

BY-LAW No. 115-2003

To designate the South Rosedale area as a heritage conservation district.

WHEREAS City Council, at its Special Meeting of July 30, 31 and August 1, 2002, adopted Clause No. 2 of Toronto East York Community Council Report No. 9, and in so doing authorized the passing of a by-law under section 40 of the *Ontario Heritage Act* defining the South Rosedale area as an area to be examined for future designation as a heritage conservation district; and

WHEREAS City Council, at its Special Meeting of July 30, 31 and August 1, 2002, passed By-law No. 623-2002 defining the study area; and

WHEREAS a heritage study of the area was subsequently conducted;

The Council of the City of Toronto HEREBY ENACTS as follows:

1. The areas outlined by the heavy lines shown on the maps attached to and forming part of this by-law are designated as a heritage conservation district under Part V of the *Ontario Heritage Act*, R.S.O. 1990, chapter O.18, as amended.

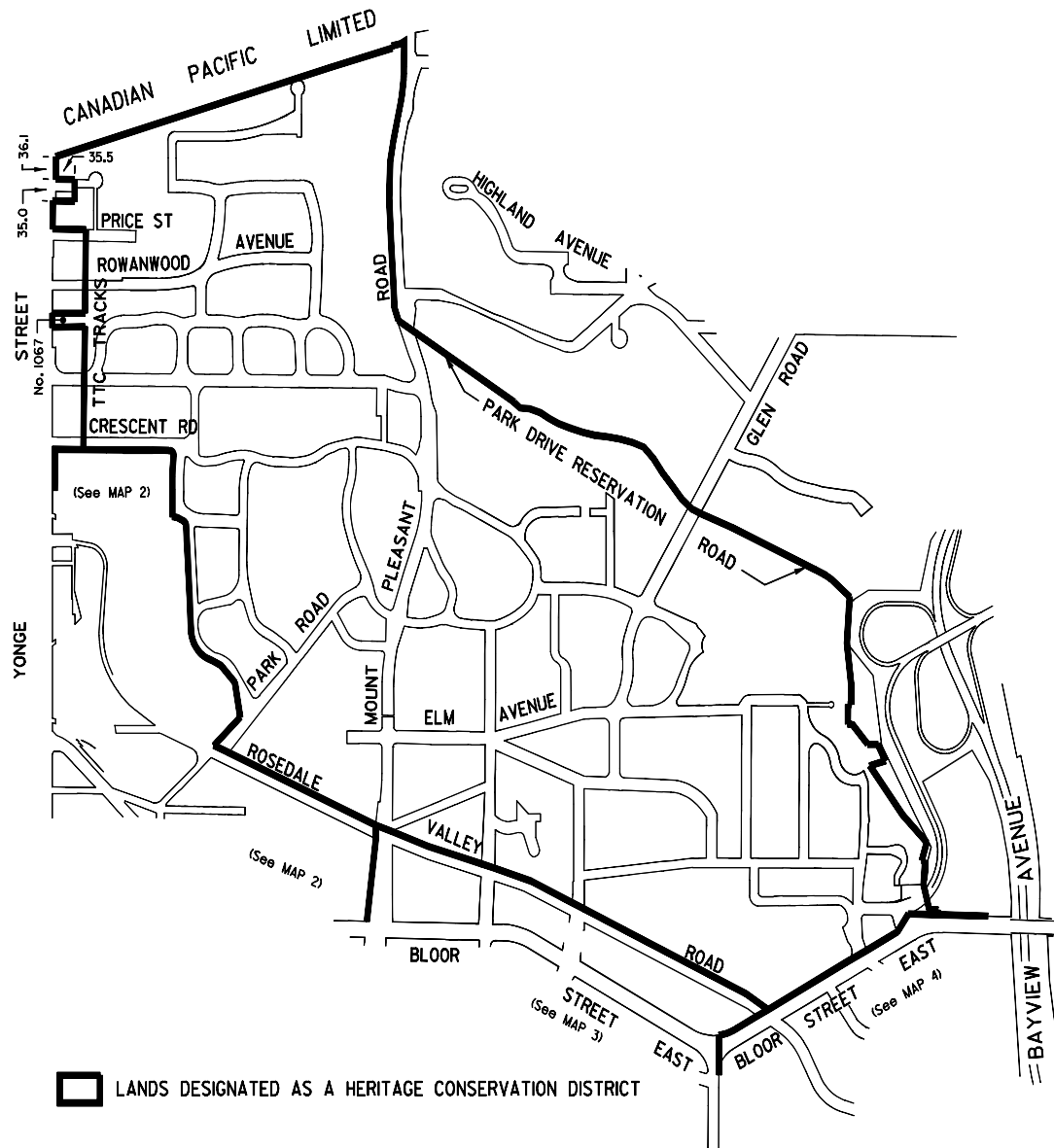
ENACTED AND PASSED this 7th day of February, A.D. 2003.

CASE OOTES,
Deputy Mayor

ULLI S. WATKISS
City Clerk

(Corporate Seal)

MAP 1 of 4

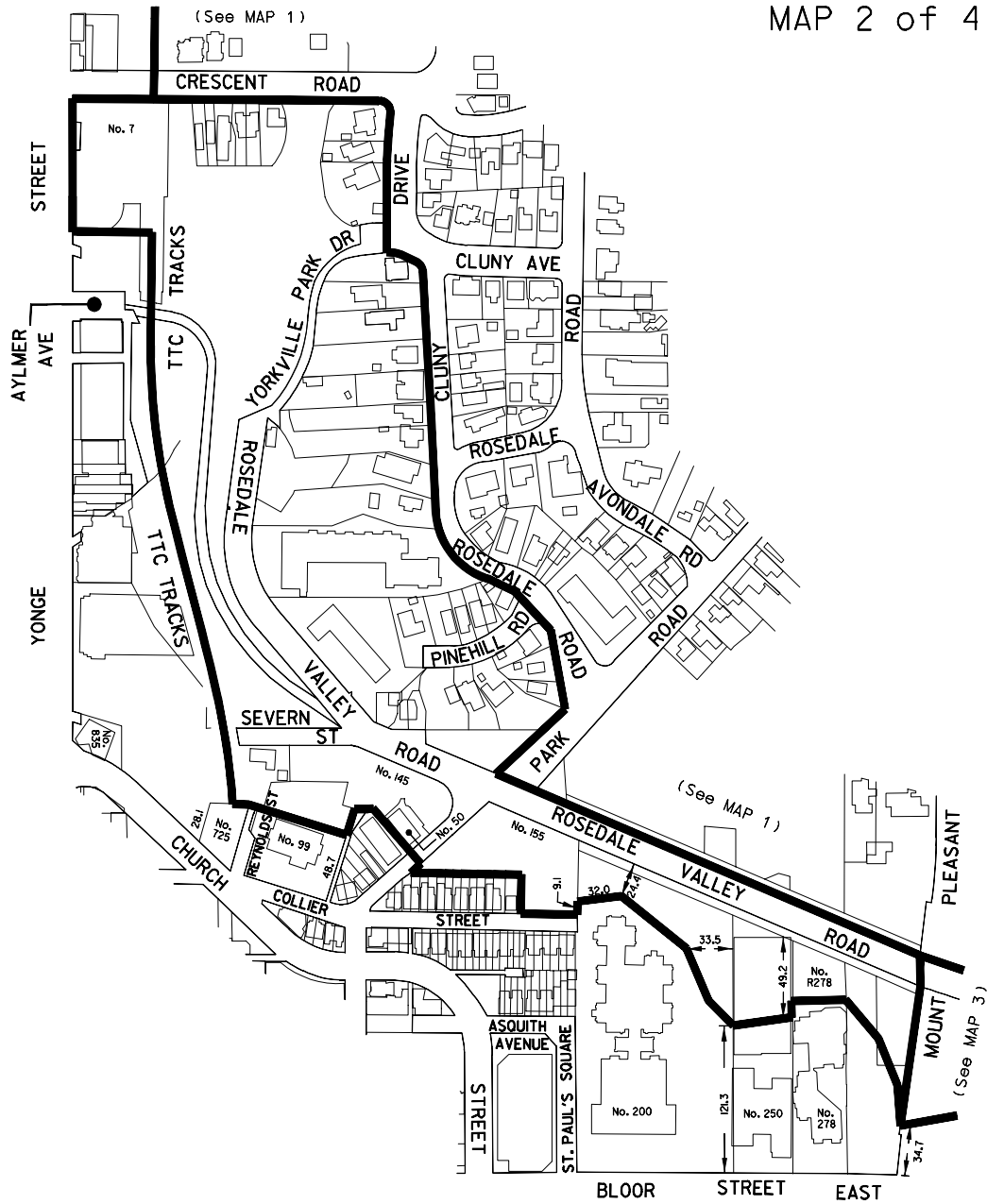


200 0 200
METRES

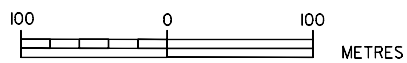


SURVEY AND MAPPING SERVICES
TORONTO FEBRUARY, 2003
BL03/SROSED1.DGN
FILE: DRAWN: WS
MAP No. 51H-23, 51J-11, 51J-12,
51J-21, 51J-22

MAP 2 of 4

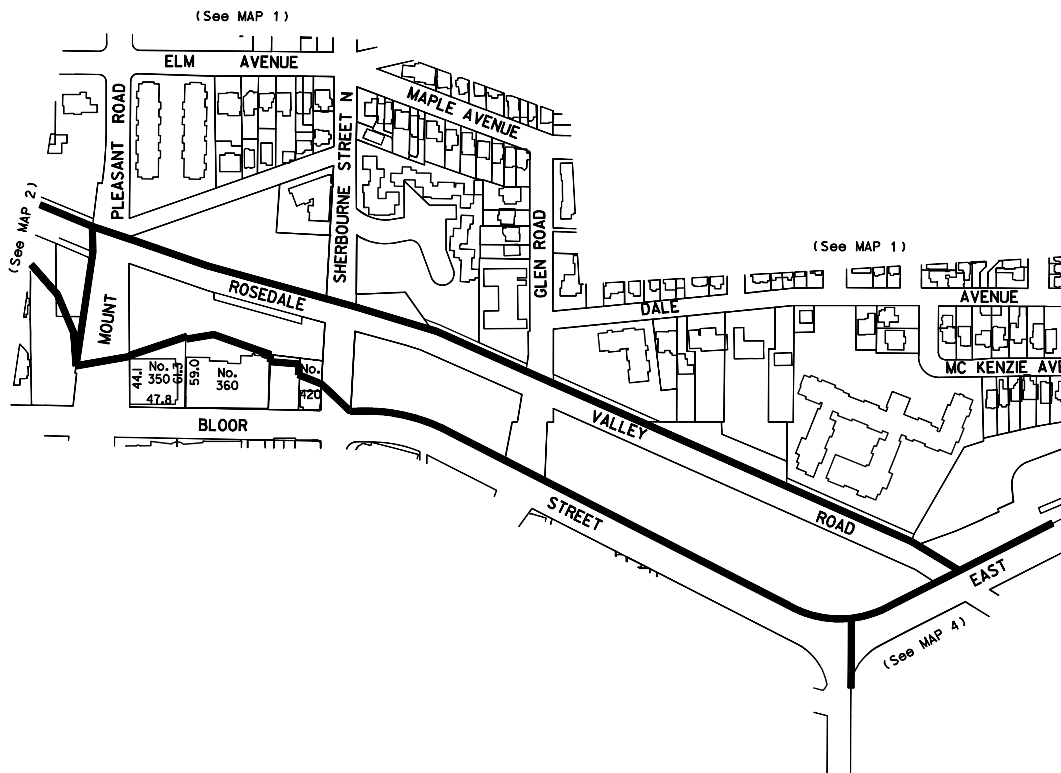


 LANDS DESIGNATED AS A HERITAGE CONSERVATION DISTRICT

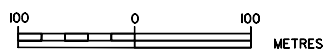


WORKS AND EMERGENCY SERVICES
SURVEY AND MAPPING SERVICES
TORONTO FEBRUARY, 2003
BL03/SROSED2.DGN
FILE: DRAWN: WS
MAP No. 51H-23, 51J-11, 51J-12,
51J-21, 51J-22

MAP 3 of 4

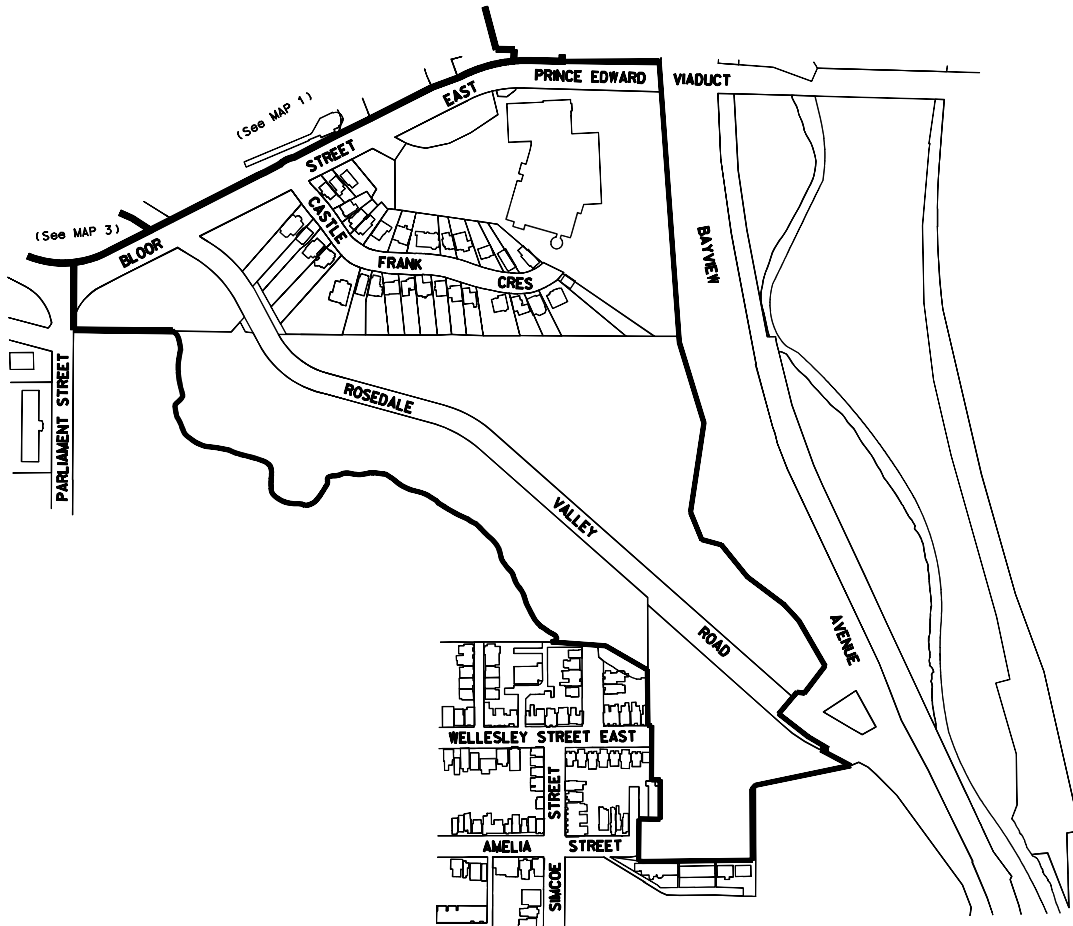


 LANDS DESIGNATED AS A HERITAGE CONSERVATION DISTRICT



WORKS AND EMERGENCY SERVICES
SURVEY AND MAPPING SERVICES
TORONTO FEBRUARY, 2003
BL03/SROSED3.DGN
FILE: DRAWN: WS
MAP No. 51H-23, 51J-11, 51J-12,
51J-21, 51J-22

MAP 4 of 4



 LANDS DESIGNATED AS A HERITAGE CONSERVATION DISTRICT

100 0 100
METRES



WORKS AND EMERGENCY SERVICES
SURVEY AND MAPPING SERVICES
TORONTO FEBRUARY, 2003
BL03/SROSED4.DGN
FILE: DRAWN: WS
MAP No. 51H-23, 51J-11, 51J-12,
51J-21, 51J-22