

Authority: Economic Development and Parks Committee Report No. 7, Clause No. 19,
as adopted by City of Toronto Council on September 22, 23, 24 and 25, 2003
Enacted by Council: September 24, 2003

CITY OF TORONTO

BY-LAW No. 816-2003

**To amend City of Toronto Municipal Code Chapter 19, Business Improvement Areas, to
reflect the expanded boundaries of the Parkdale Village Business Improvement Area.**

WHEREAS Chapter 19 “Business Improvement Areas” of the City of Toronto Municipal Code designates various areas of the City as Business Improvement Areas, including the Parkdale Village Business Improvement Area; and

WHEREAS by the enactment of By-law No. 815-2003 on September 24, 2003, City of Toronto Council designated an area that includes the existing Parkdale Village Business Improvement Area (as described in former City of Toronto By-law No. 497-78) as an improvement area; and

WHEREAS Schedule A of the Toronto Municipal Code, Chapter 19, “Business Improvement Areas” must be amended to reflect the designation of the expanded Parkdale Village Business Improvement Area;

The Council of the City of Toronto HEREBY ENACTS as follows:

1. The table in Schedule A of the Toronto Municipal Code, Chapter 19, “Business Improvement Areas”, is amended as follows:
 - (1) by deleting By-law No. “497-78 (Toronto)” beside the name “Parkdale Village” in the “Designating By-law” column and substituting “815-2003 (Toronto)”; and
 - (2) by deleting the maps of the Parkdale Village Business Improvement Area and substituting Maps No. 1 to 4 of the Parkdale Village Business Improvement Area attached to this by-law.

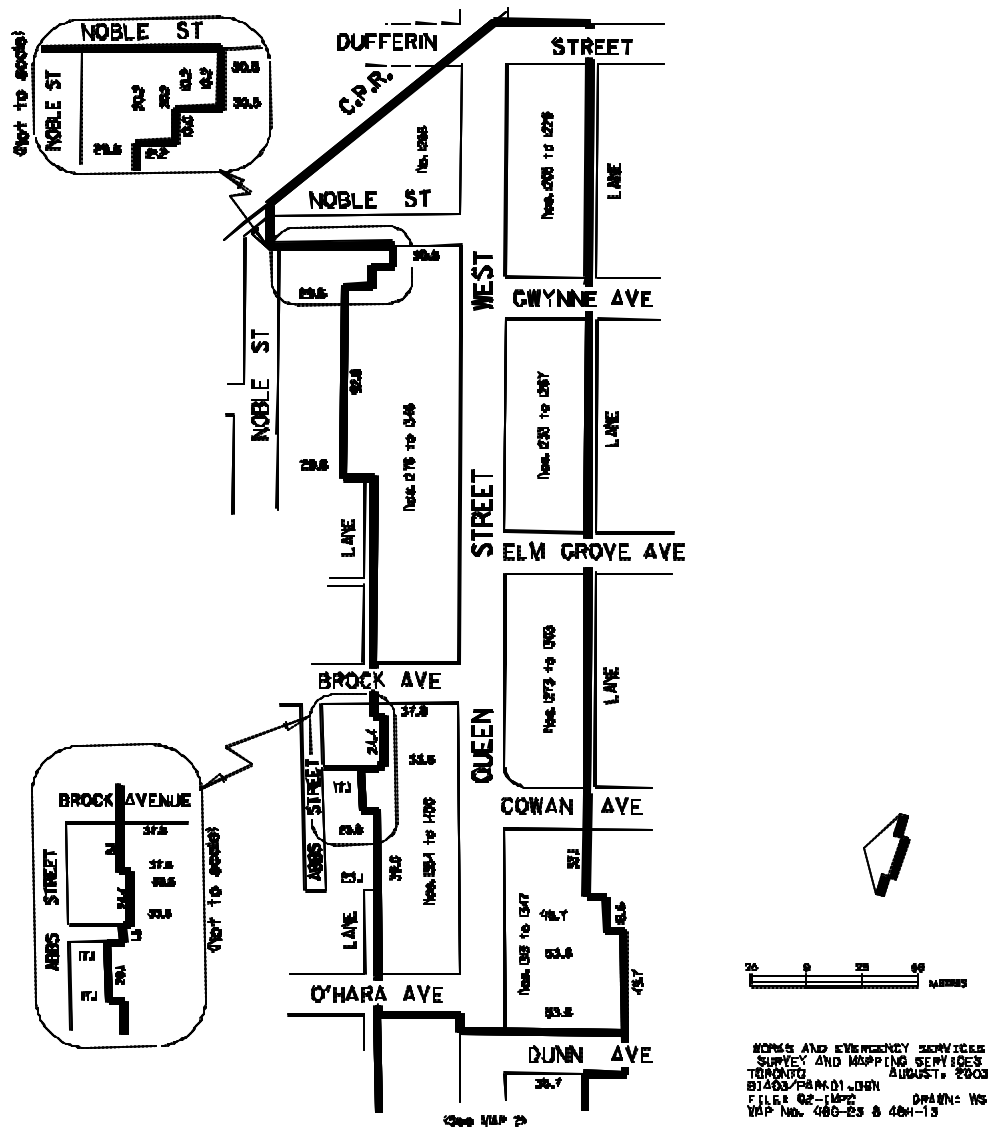
ENACTED AND PASSED this 24th day of September, A.D. 2003.

CASE OOTES,
Deputy Mayor

ULLI S. WATKISS
City Clerk

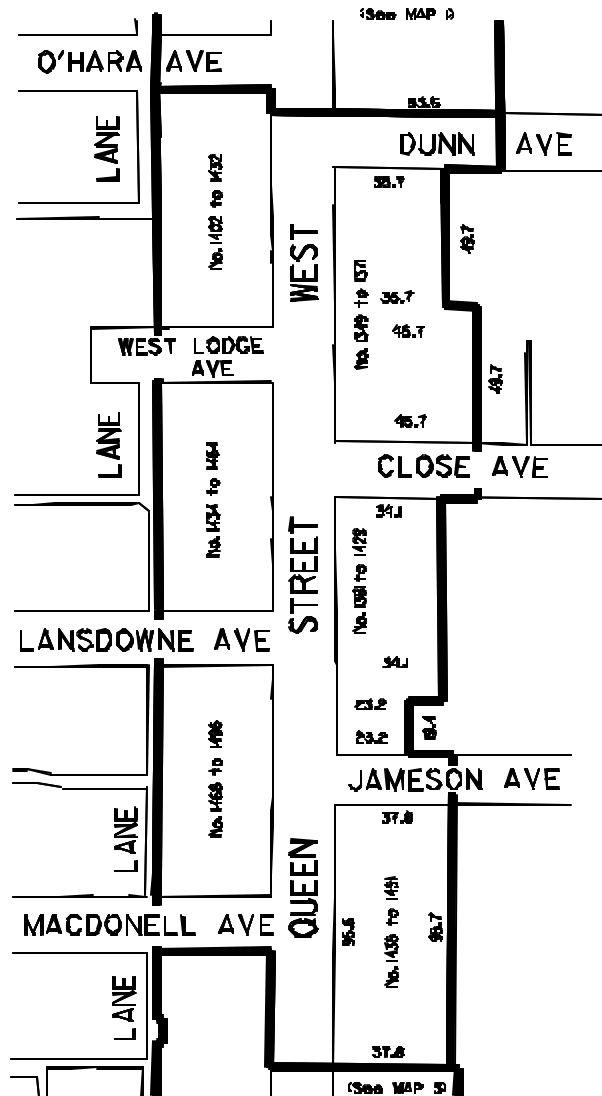
(Corporate Seal)

**SCHEDULE A
PARKDALE VILLAGE
BUSINESS IMPROVMENT AREA
MAP 1 of 4**



Chapter 19

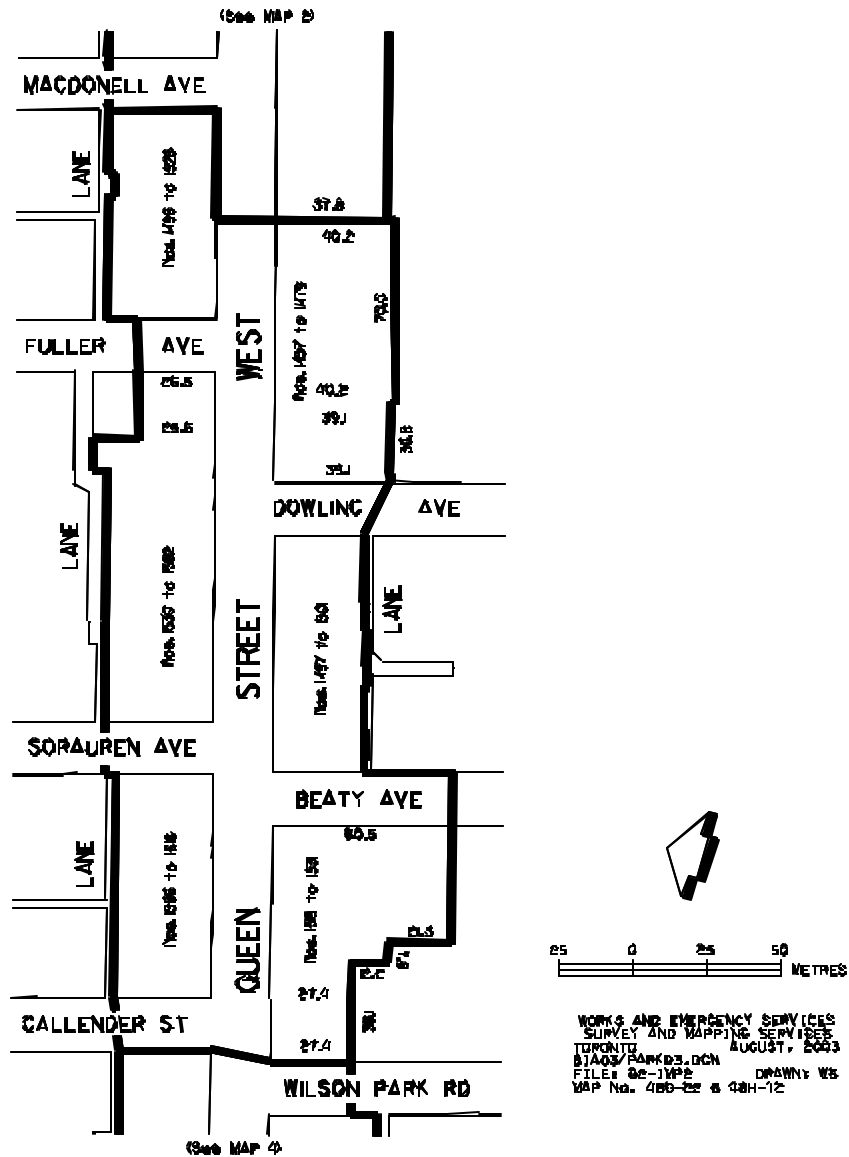
**SCHEDULE A
PARKDALE VILLAGE
BUSINESS IMPROVEMENT AREA
MAP 2 of 4**



WORKS AND EMERGENCY SERVICES
SURVEY AND MAPPING SERVICES
TORONTO AUGUST, 2003
B1A03/PARKDALE.DGN
FILE: Q2-IMP2 DRAWN: WS
MAP No. 48G-22, 48G-23
48H-12 & 48H-13

Chapter 19

**SCHEDULE A
PARKDALE VILLAGE
BUSINESS IMPROVEMENT AREA
MAP 3 of 4**



Chapter 19

**SCHEDULE A
PARKDALE VILLAGE
BUSINESS IMPROVEMENT AREA
MAP 4 of 4**

