

Authority: Toronto and East York Community Council Report No. 7, Clause No. 2,
as adopted by City of Toronto Council on September 28, 29 and 30, 2005
Enacted by Council: September 30, 2005

CITY OF TORONTO

BY-LAW No. 853-2005

To amend the General Zoning By-law No. 438-86 of the former City of Toronto as amended by By-law No. 566-2000, By-law No. 684-2003 and By-law No. 600-2005 with respect to the lands known as 65, 75, and 85 East Liberty Street, 69 Lynn Williams Street, 150 East Liberty Street, 80 Lynn Williams Street and 90 Lynn Williams Street being portions of the Garrison Common North Area, for the lands known as the *Inglis Lands*.

WHEREAS authority is given to Council by the *Planning Act*, R.S.O. 1990, c.P. 13, as amended, to pass this by-law; and

WHEREAS the Council of the City of Toronto has provided adequate information to the public and has held at least one public meeting in accordance with the *Planning Act*;

The Council of the City of Toronto HEREBY ENACTS as follows:

1. Map 1, Map 2, Map 3A, Map 3E, Map 3F, Map 4 and Map 5 of By-law No. 600-2005 are deleted and replaced with Map 1, Map 2, Map 3A, Map 3E, Map 3F, Map 4 and Map 5 as attached to this by-law.

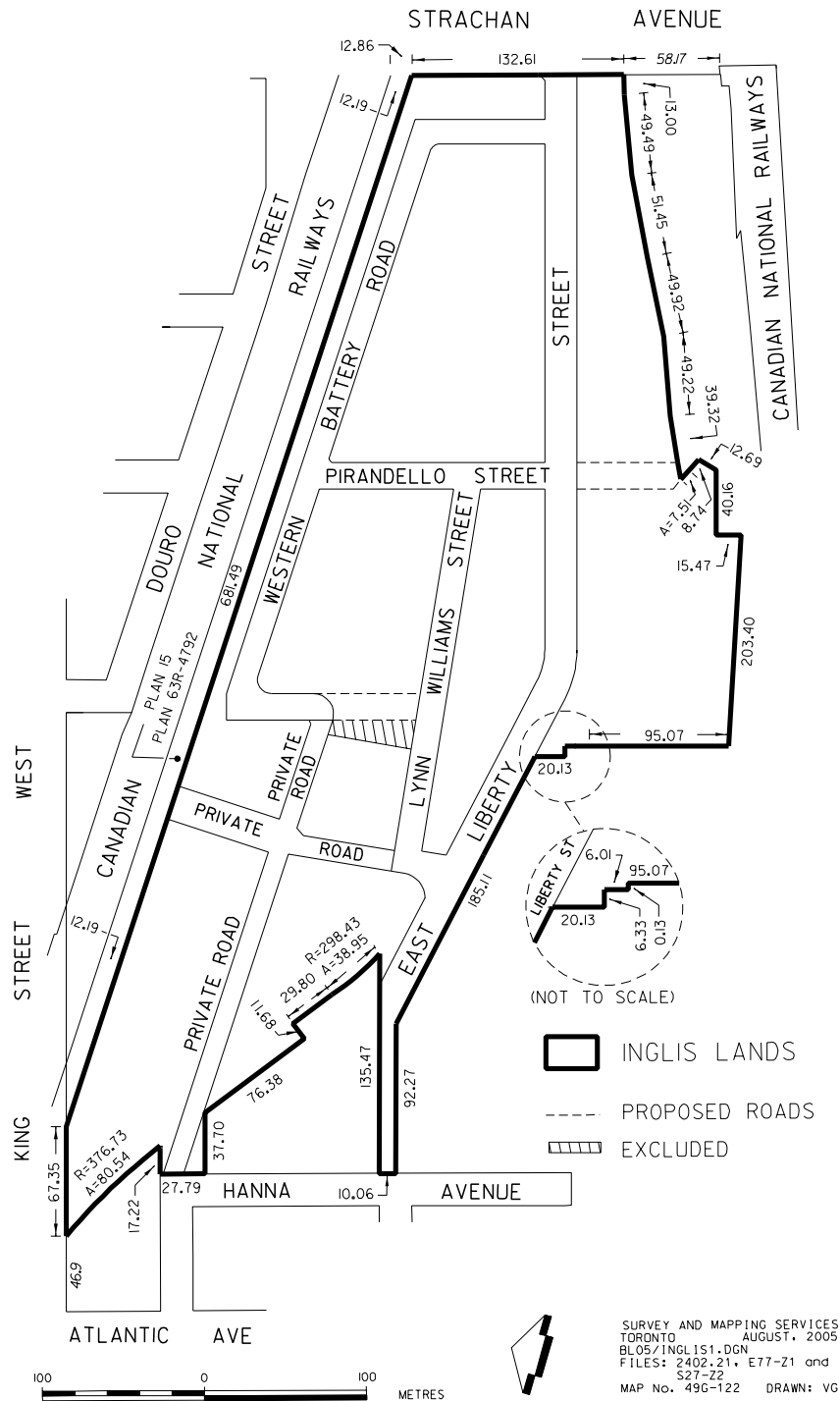
ENACTED AND PASSED this 30th day of September, A.D. 2005.

DAVID R. MILLER,
Mayor

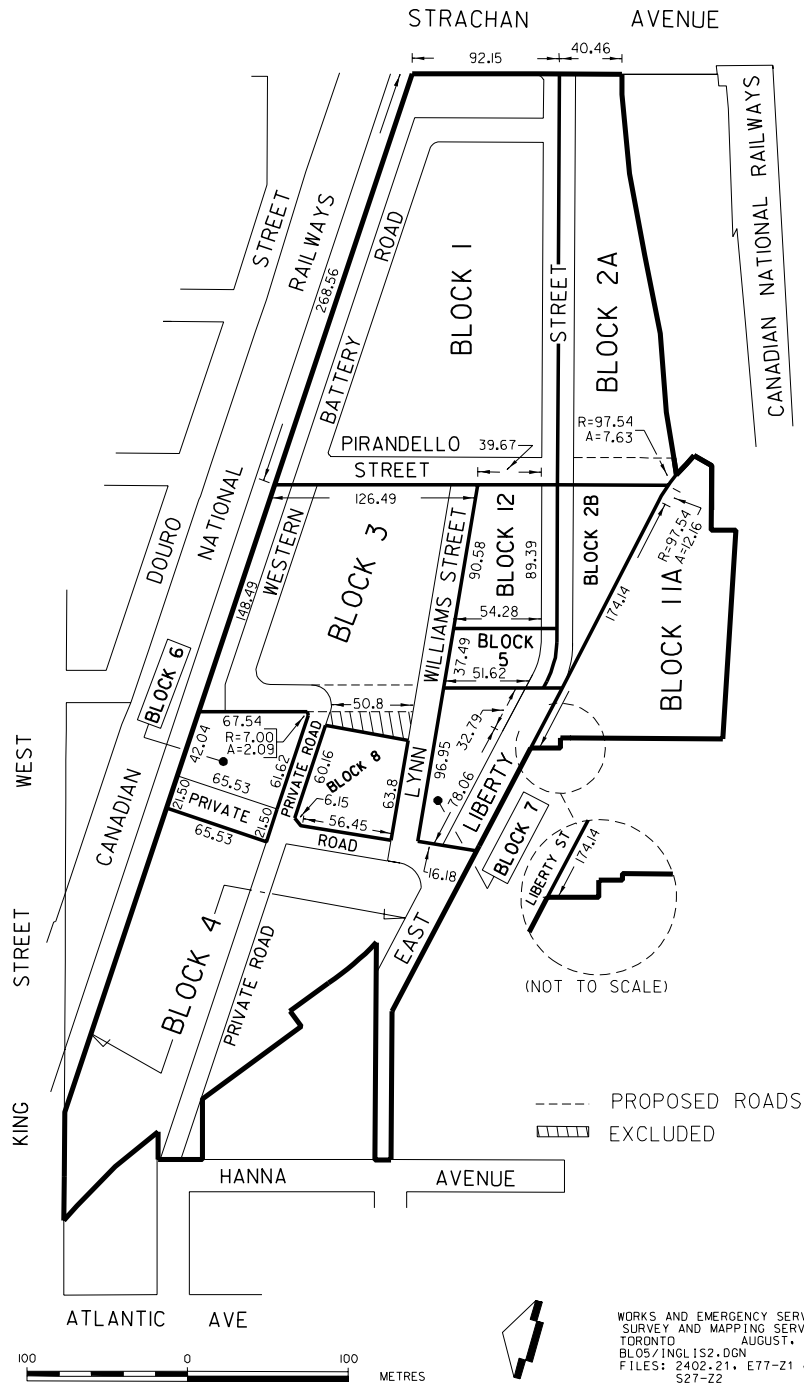
ULLI S. WATKISS
City Clerk

(Corporate Seal)

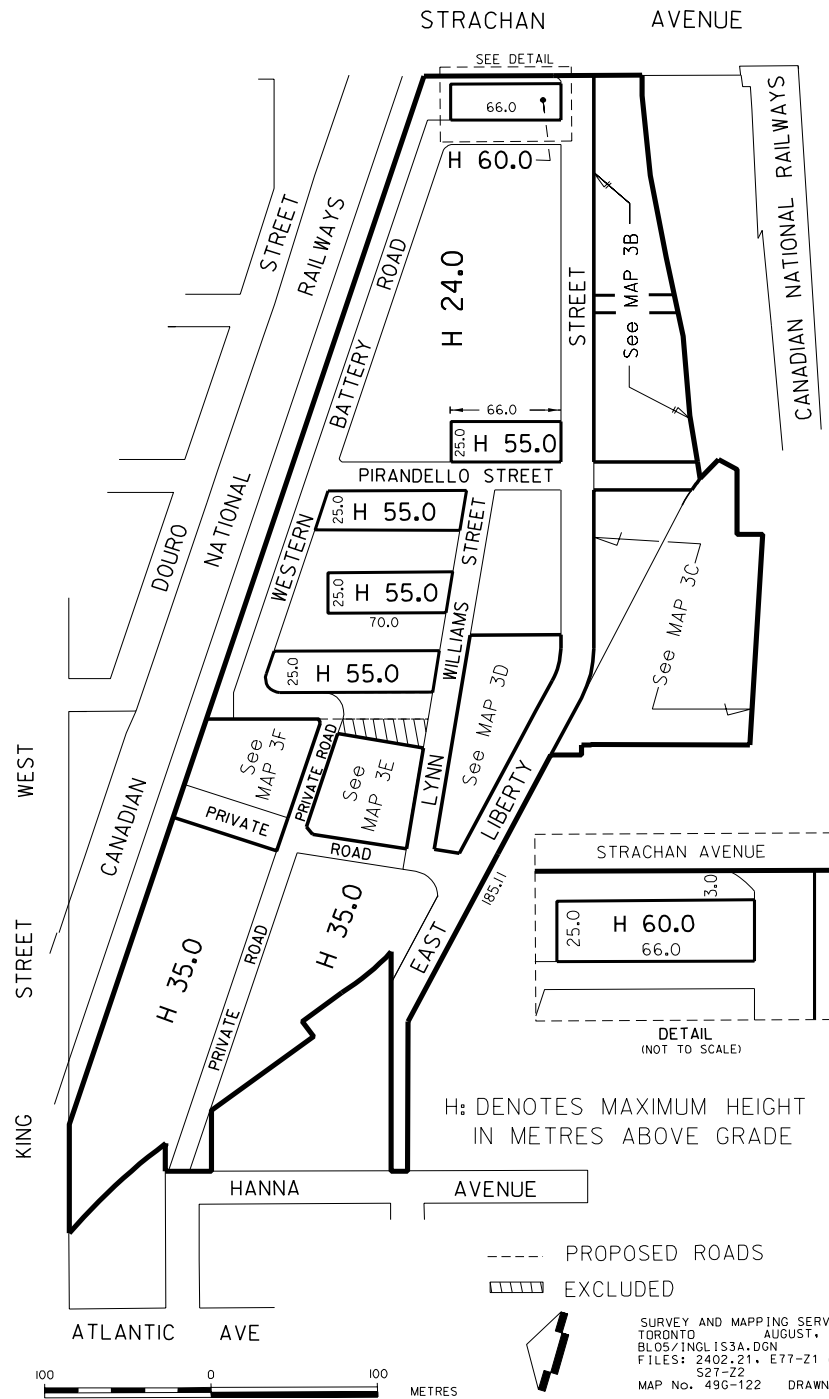
MAP 1



MAP 2

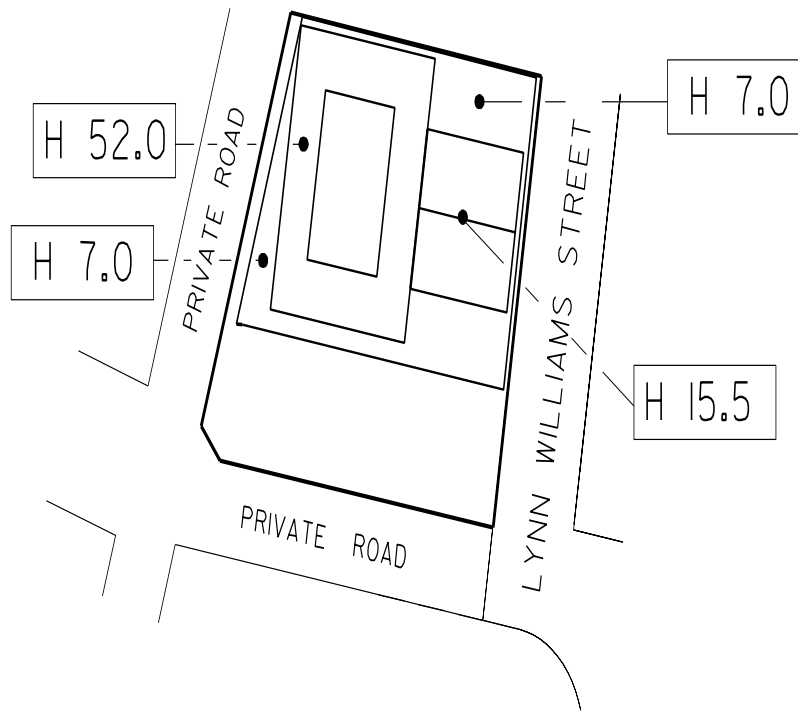


MAP 3A



MAP 3E

(BLOCK 8)



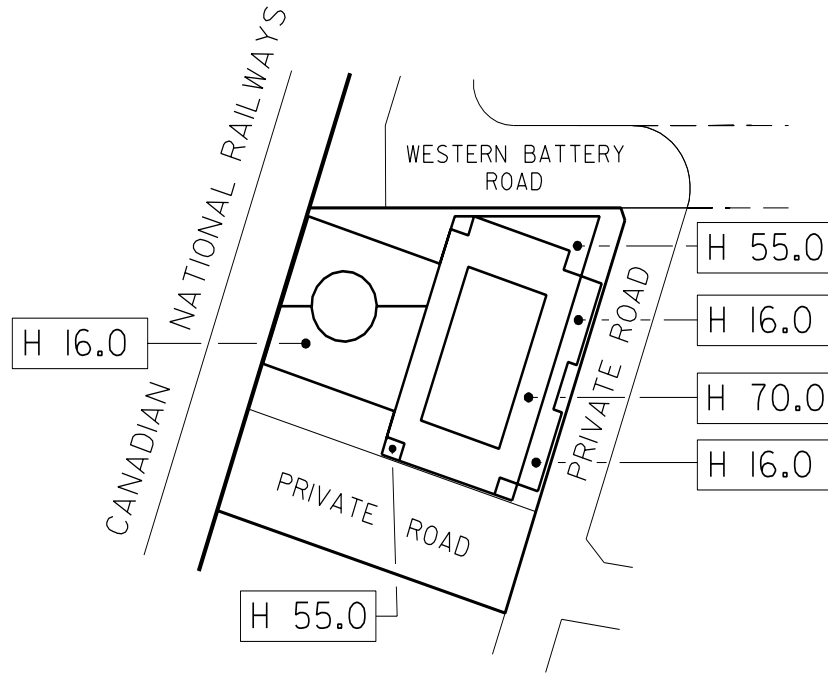
H: DENOTES MAXIMUM HEIGHT IN METRES ABOVE GRADE



SURVEY AND MAPPING SERVICES
TORONTO AUGUST, 2005
BL05/INGLIS3E.DGN
FILES: 2402.21, E77-Z1 and
S27-Z2
MAP No. 496-122 DRAWN: VG

MAP 3F

(BLOCK 6)



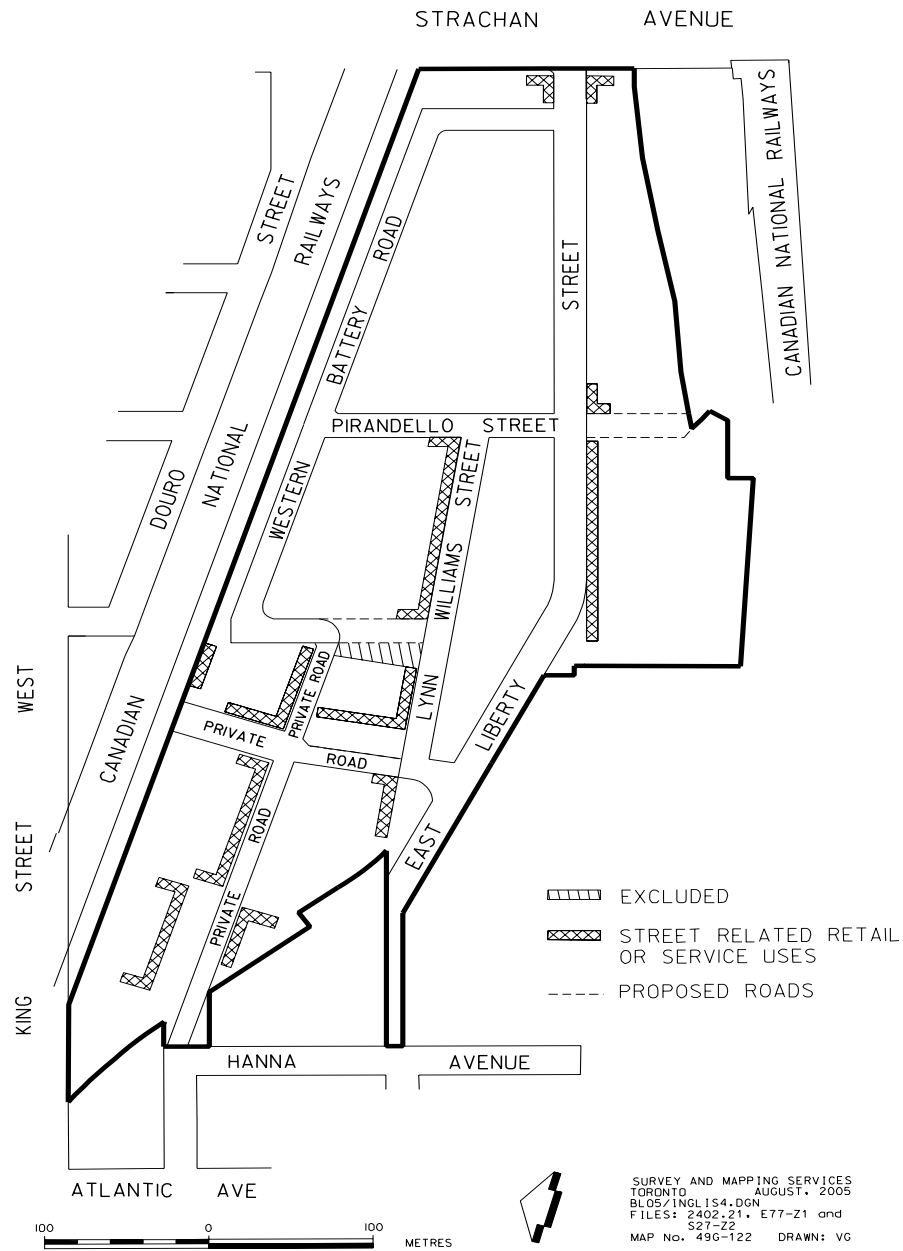
— — — — PROPOSED ROAD

H: DENOTES MAXIMUM HEIGHT IN METRES ABOVE GRADE

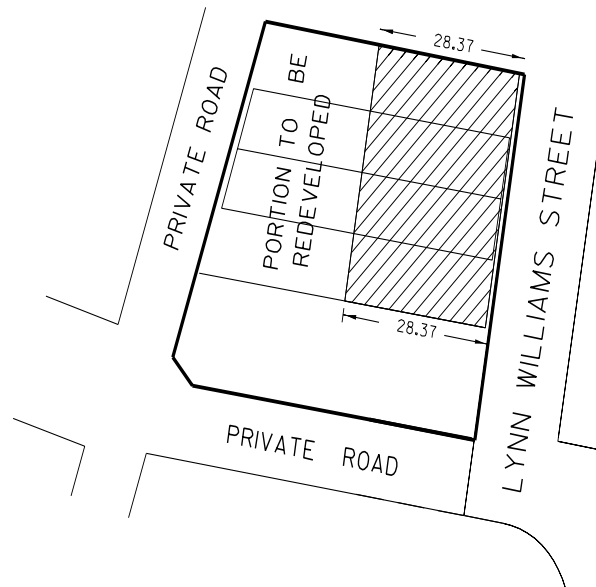


SURVEY AND MAPPING SERVICES
TORONTO AUGUST 2005
BLOS/INGLIS3F.DGN
FILES: 2402.21, E77-Z1 and
S27-Z2
MAP No. 49G-122 DRAWN: VG

MAP 4



MAP 5



 PORTION OF EXISTING BUILDING
TO BE RETAINED



SURVEY AND MAPPING SERVICES
TORONTO AUGUST, 2005
BL05/INGL155.DGN
FILES: 2402.21, E77-Z1 and
S27-Z2
MAP No. 49G-122 DRAWN: VG