

CITY OF TORONTO

BY-LAW No. 899-2007(OMB)

To amend former City of Scarborough Zoning By-law No. 10048, as amended, the Eglinton Community Zoning By-law, with respect to lands municipally known as 807 Midland Avenue.

WHEREAS the Ontario Municipal Board pursuant to its Order No. 1154 dated July 7, 2004, as amended by Order No. 3323 dated December 20, 2005, upon hearing the appeal of Nicholas Christoforidis under Section 34(11) of the *Planning Act*, R.S.O. 1990, c.P. 13, as amended, deems it advisable to amend By-law No. 10048, the Eglinton Community Zoning By-law of the former City of Scarborough;

THEREFORE By-law No. 10048, as amended, of the former City of Scarborough is further amended as follows:

1. **SCHEDULE 'A'** is amended by deleting the current zoning and substituting the following zoning as shown on Schedule '1':

A – 24 – 30 – 41 – 184 – 334 – 335 – 416

2. **SCHEDULE 'B' PERFORMANCE STANDARDS CHART**, is amended by adding the following Performance Standards:

334. Maximum coverage 36%.

335. Maximum 6 dwelling units.

416. Minimum 270mm side yard setback on the south side.

3. **SCHEDULE 'C'** is amended by adding the following Exception No. 70:

70. On the lands identified as Exception No. 70 on the accompanying Schedule 'C' map, the following provisions shall apply provided, however, that all other provisions of By-law No. 10048, as amended, not inconsistent with this Exception, shall continue to apply:

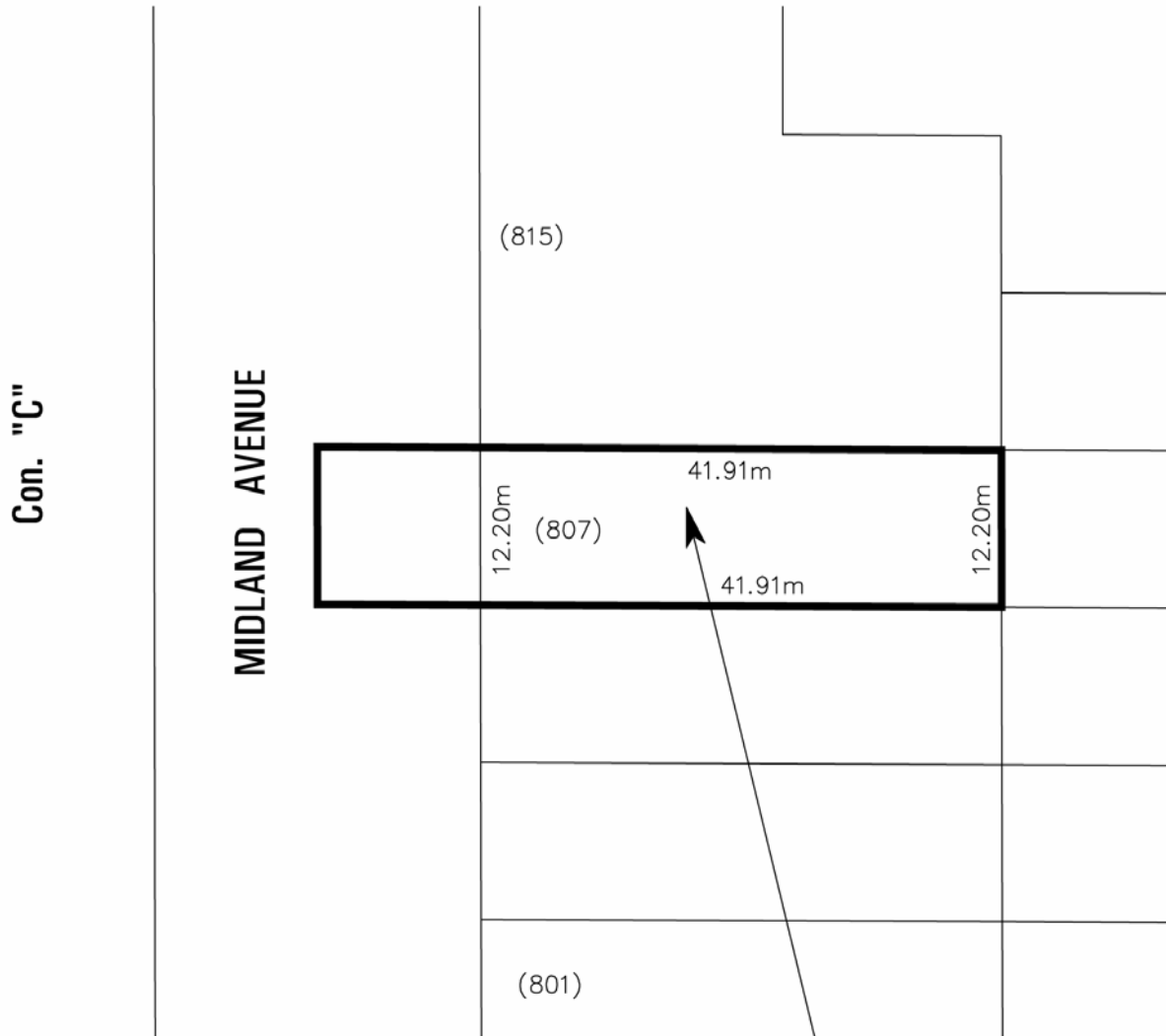
(a) Clause VI Section 5. Landscape requirements shall not apply.

(b) Clause VII Section 1. General Parking Requirements shall not apply, however, 3 parking spaces shall be provided in the rear yard.

PURSUANT TO ORDER/DECISION NO. 1154 OF THE ONTARIO MUNICIPAL BOARD ISSUED ON JULY 7, 2004, AS AMENDED BY ORDER NO. 3323 DATED DECEMBER 20, 2005 IN BOARD FILE NO. PL030930.

Schedule '1'

Lot 26



A-24-30-41-184-334-335-416



Zoning By-Law Amendment

807 Midland Avenue

File # TF CMB 2003 0001



Area Affected By This By-Law

Eglinton Community Bylaw
Not to Scale
6/22/04



Schedule 'C'**Lot 26**