

Authority: Scarborough Community Council Item 26.21,
as adopted by City of Toronto Council on May 25, 26 and 27, 2009
Enacted by Council: May 27, 2009

CITY OF TORONTO

BY-LAW No. 566-2009

To amend the former City of Scarborough Employment Districts Zoning By-law No. 24982, as amended, (Progress Employment District) with respect to lands municipally known as 38 Estate Drive.

WHEREAS authority is given to Council by Section 34 of the *Planning Act*, R.S.O. 1990, c.P. 13, as amended, to pass this By-law; and

WHEREAS Council of the City of Toronto has provided adequate information to the public and has held at least one public meeting in accordance with the *Planning Act*;

The Council of the City of Toronto HEREBY ENACTS as follows:

1. **SCHEDULE “A”** of the Employment Districts Zoning By-law No. 24982 (Progress Employment District) is amended by deleting the current zoning provisions for the lands municipally known as 38 Estate Drive and replacing them with the following zoning provisions as shown on Schedule ‘1’ attached hereto and forming part of this by-law:

M – 16 – 340 – 341 – 342 – 913 – 1054 – 1182 – 1409 – 1444 – 1640 – 2029 (437)

2. **SCHEDULE “B”, PERFORMANCE STANDARDS CHART**, is amended by deleting the text contained in Performance Standards Nos. 340 and 341 and replacing them with the following new text so that Performance Standards Nos. 340 and 341 now read as follows:

INTENSITY OF USE

340. Maximum number of hotel bedroom units is 159.

341. Maximum total gross floor area of all Hotels shall not exceed 8392 square metres.

3. **SCHEDULE “B”, PERFORMANCE STANDARDS CHART**, is amended by adding the following Performance Standard:

1444. Parking spaces shall have minimum dimensions of 2.6 m by 5.4 m.

ENACTED AND PASSED this 27th day of May, A.D. 2009.

DAVID R. MILLER,
Mayor

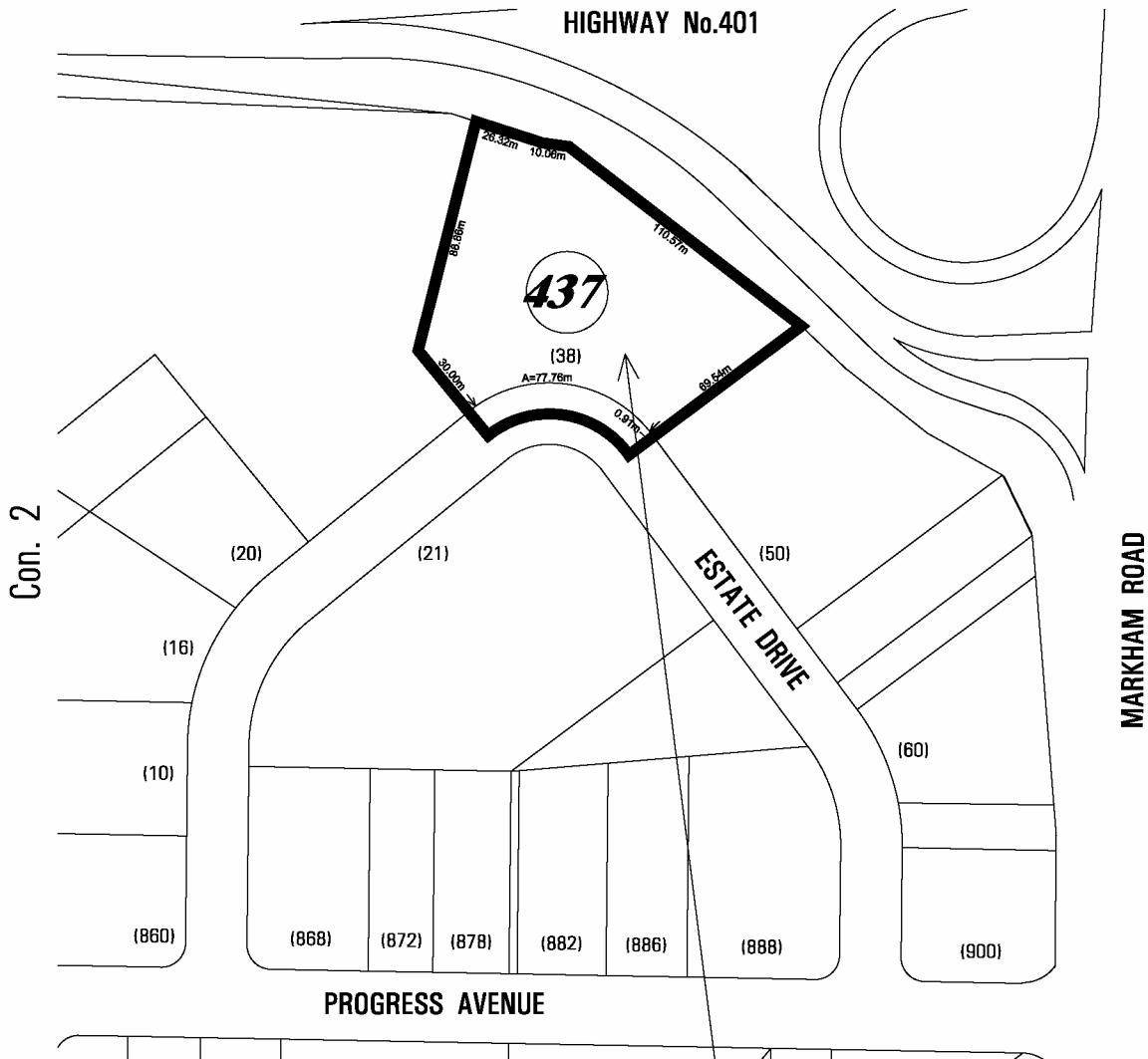
ULLI S. WATKISS
City Clerk

(Corporate Seal)

Schedule '1'

Lot 19

HIGHWAY No.401



M-16-340-341-342-913-1054-
 1182-1409-1444-1640-2029

Toronto City Planning Division
Zoning By-Law Amendment

38 Estate Drive
 File # 07-236958 0Z

 Area Affected By This By-Law

Progress Employment District Bylaw
 Not to Scale
 4/20/09

