

Authority: Parks and Environment Committee Item 17.2,
as adopted by City of Toronto Council on November 27, 28 and 29, 2012

CITY OF TORONTO

BY-LAW No. 602-2013

**To provide for an integrated pest management system to control
European Gypsy Moth infestation.**

Whereas City Council has authorized Urban Forestry staff to implement, where necessary in Wards 3, 4, 5, 27 and other Wards as determined by surveys, an integrated pest management program for the control of European Gypsy Moth; and

Whereas the City passed By-law No. 435-2013 to authorize the General Manager, Parks, Forestry and Recreation to implement control measures in order to prevent further tree loss and defoliation as a result of the presence of European Gypsy Moth populations in certain areas of the City; and

Whereas it has been determined that it is necessary to undertake aerial spraying in the area of Ward 28 indentified on the map attached as Schedule "A" to this by-law;

The Council of the City of Toronto enacts:

1. By-law No. 435-2013 is amended by:
 - A. Adding the number "28" after "27" in section 1.A.
 - B. Deleting the existing Schedule "A" map in By-law No. 435-2103 and replacing it with the Map attached as Schedule "A" to this by-law.
 - C. Adding the map attached as Schedule "B" to this by-law to Schedule "B".

Enacted and passed on May 10, 2013.

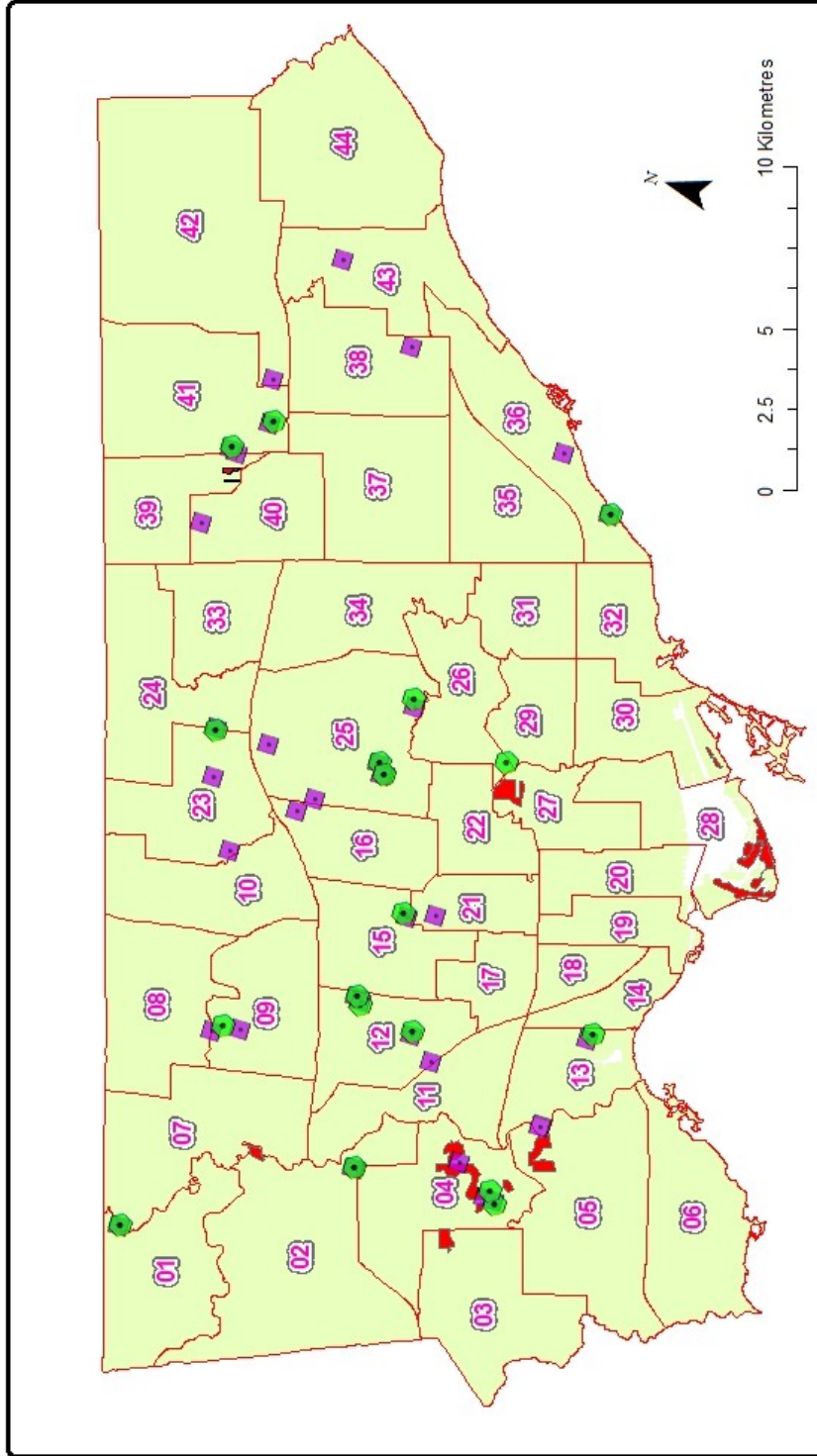
Frances Nunziata,
Speaker

Ulli S. Watkiss,
City Clerk

(Seal of the City)

SCHEDULE "A"

2013 Gypsy Moth Management Plan: City Wide



Toronto Parks, Forestry & Recreation

Urban Forestry /
Forest Health Care
18 Dundas St. West
Toronto, ON M5G 1V5
Tel: (416) 392-1436
Fax: (416) 392-1915

THE INFORMATION HEREON HAS BEEN COMPILED FOR GENERAL PLANNING PURPOSES ONLY. NO ONE MAY COPY, REPRODUCE, DISTRIBUTE OR ALTER THIS MAP WITHOUT THE WRITTEN PERMISSION OF THE CITY OF TORONTO.

© Copyright City of Toronto

LEGEND

- AERIAL SPRAY ZONES
- MECHANICAL EGG MASS REMOVAL SITES
- GROUND SPRAY APPLICATION / INJECTION SITES

DATA SOURCE:
SPRAY LOCATIONS - URBAN FORESTRY, 02/2013

SCHEDULE "B"

2013 Gypsy Moth Spray Locations: Toronto Island



Toronto Parks, Forestry & Recreation

Urban Forestry:
Forest Health Care
18 D'Yse Rd, 1st Floor
Toronto, ON M5B 1Y5
Tel: (416) 392-1436
Fax: (416) 392-1915

THE INFORMATION HEREON HAS BEEN COMPILED FOR GENERAL PLANNING PURPOSES ONLY. NO ONE MAY COPY, REPRODUCE, DISTRIBUTE OR ALTER THIS MAP WITHOUT THE WRITTEN PERMISSION OF THE CITY OF TORONTO.
© Copyright City of Toronto

0 100 200 400
Metres

DATA SOURCE:
BASE MAP - TORONTO STREET CENTRELINE
SPRAY LOCATIONS - URBAN FORESTRY, 02/2013

LEGEND

- SPRAY AREA
- PARK
- STREET CURB