

Authority: Toronto East York Community Council Item 23.2,  
as adopted by City of Toronto Council on May 7, 8, 9 and 10, 2013

**CITY OF TORONTO**

**BY-LAW No. 1041-2013**

**To rename a portion of the public highway "Elizabeth Street" as "Dr. Emily Stowe Way".**

The Council of the City of Toronto enacts:

**1. Certain land described as:**

PIN 21415-0110(LT)

Parts of Lots 122-124 Plan 159 Toronto designated as PART 1 on 63R-256 and  
PART 1 on 63R-1528 known as Elizabeth Street

Land Titles Division of the Toronto Registry Office (No. 66)  
City of Toronto and Province of Ontario

and shown on the sketch attached to this By-law is renamed "Dr. Emily Stowe Way".

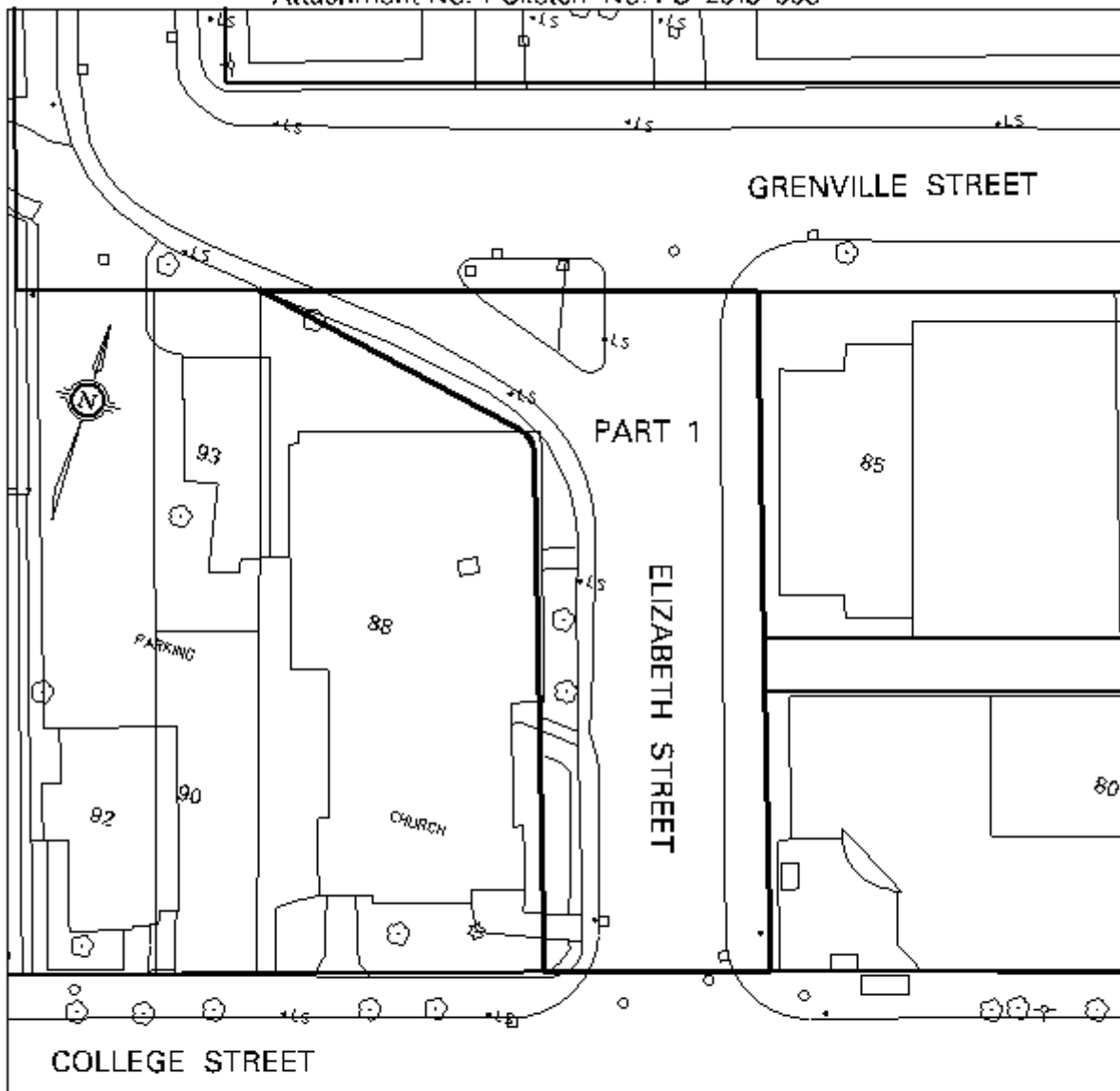
Enacted and passed on July 19, 2013.

Frances Nunziata,  
Speaker

Ulli S. Watkiss,  
City Clerk

(Seal of the City)

Attachment No. 1 Sketch No. PS 2013 008



**Toronto**  
 COMMUNITY DEVELOPMENT  
 CITY OF TORONTO

## NOTE:

THIS SKETCH HAS BEEN  
 PREPARED BY THE CITY OF  
 TORONTO AND IS NOT A  
 PROFESSIONAL ENGINEERING  
 DRAWING

CHECKED BY JOHN - CURE

PREPARED BY DWAYNE PITT

## PROPERTY INFORMATION SHEET

## CITY OWNED LAND

SKETCH SHOWING A PORTION OF  
 ELIZABETH STREET BETWEEN COLLEGE STREET  
 AND GRENVILLE STREET

WARD 27 - TORONTO: CENTRE-ROSEDALE  
 DATE: JANUARY 28, 2013

SKETCH No. PS 2013 008